 Technical Service Bulletin	GROUP BODY	NUMBER 25-BD-007G
	DATE MAY 2025	MODEL(S) SEE BELOW
SUBJECT: 2023-2024MY G70/GV70 DARK CHROME TRIM STAINED OR DISCOLORED		

Description: This bulletin provides repair information for the dark chrome trim when stains are present. Some stains may occur from hard water or cleaning chemicals used during a car wash. Follow the procedures below to replace the affected dark chrome moldings.



- Applicable Vehicles with Dark Chrome Trim:**
- 2023-2024MY G70 (IK) vehicles
 - 2023MY GV70 (JK1) vehicles (VIN starting with "KMU")
 - 2024MY GV70 (JK1A) vehicles (VIN starting with "5NM")

Parts Information:

Model	Part Name	Part Number
G70 (IK)	Weatherstrip Assembly – Front Door Belt Outer Side (LH)	82210-G9010
	Weatherstrip Assembly – Front Door Belt Outer Side (RH)	82220-G9010
	Weatherstrip Assembly – Rear Door Belt Outer Side (LH)	83210-G9010
	Weatherstrip Assembly – Rear Door Belt Outer Side (RH)	83220-G9010
	Moulding Assembly – Front Door Frame (LH)	82850-G9010
	Moulding Assembly – Front Door Frame (RH)	82860-G9010
	Moulding Assembly – Rear Door Frame (LH)	83850-G9011
	Moulding Assembly -Rear Door Frame (RH)	83860-G9011
GV70 (JK1, JK1A)	W/Strip Assembly – Front Door Belt Outer Side (LH)	82210-AR010
	W/Strip Assembly – Front Door Belt Outer Side (RH)	82220-AR010
	W/Strip Assembly – Rear Door Belt Outer Side LH	83210-AR010
	W/Strip Assembly – Rear Door Belt Outer Side RH	83220-AR010
	Moulding Assembly – Front Door Frame (LH)	82850-AR010
	Moulding Assembly – Front Door Frame (RH)	82860-AR010
	Moulding Assembly – Rear Door Frame (LH)	83850-AR010
	Moulding Assembly – Rear Door Frame (RH)	83860-AR010
	Glass & Moulding Assembly – Quarter Fixed (LH)	87810-AR100
		87810-AR500
	Glass & Moulding Assembly – Quarter Fixed, (RH)	87820-AR100
		87820-AR500

NOTE: For parts with multiple part numbers, refer to the parts catalog for the applicable part number per VIN.

Warranty Information:

Model	Op. Code	Operation	Op. Time	Causal Part	Nature Code	Cause Code
G70 (IK)	50D101R0	Replace Dark Chrome – Weatherstrip Assembly Front Door Belt Outer Side (LH)	0.2 M/H	82210-G9010	A41	ZZ6
	50D101R1	Replace Dark Chrome – Weatherstrip Assembly Front Door Belt Outer Side (RH)		82220-G9010		
	50D101R2	Replace Dark Chrome Weatherstrip Assembly Rear Door Belt Outer Side (LH)		83210-G9010		
	50D101R3	Replace Dark Chrome – Weatherstrip Assembly Rear Door Belt Outer Side (RH)		83220-G9010		
	50D101R4	Replace Dark Chrome – Moulding Assembly -Front Door Frame (LH)		82850-G9010		
	50D101R5	Replace Dark Chrome – Moulding Assembly -Front Door Frame (RH)		82860-G9010		
	50D101R6	Replace Dark Chrome – Moulding Assembly -Rear Door Frame (LH)		83850-G9011		
	50D101R7	Replace Dark Chrome – Moulding Assembly -Rear Door Frame (RH)		83860-G9011		
GV70 (JK1, JK1A)	50D101RA	Replace Dark Chrome – Weatherstrip Assembly Front Door Belt Outer Side (LH)	0.2 M/H	82210-AR010	A41	ZZ6
	50D101RB	Replace Dark Chrome – Weatherstrip Assembly Front Door Belt Outer Side (RH)		82220-AR010		
	50D101RC	Replace Dark Chrome - Weatherstrip Assembly Rear Door Belt Outer Side (LH)		83210-AR010		
	50D101RD	Replace Dark Chrome – Weatherstrip Assembly Rear Door Belt Outer Side (RH)		83220-AR010		
	50D101RE	Replace Dark Chrome – Moulding Assembly – Front Door Frame (LH)		82850-AR010		
	50D101RF	Replace Dark Chrome – Moulding Assembly – Front Door Frame (RH)		82860-AR010		
	50D101RG	Replace Dark Chrome – Moulding Assembly – Rear Door Frame (LH)		83850-AR010		
	50D101RH	Replace Dark Chrome – Moulding Assembly – Rear Door Frame (RH)		83860-AR010		
	50D101RI	Replace Dark Chrome - LH Rear Fixed Glass Moulding	0.8 M/H	87810-AR500	A41	ZZ6
	50D101RJ	Replace Dark Chrome – RH Rear Fixed Glass Moulding		87820-AR500		

NOTE 1: Submit claim(s) on Claim Entry Screen as “Campaign” type.

NOTE 2: Submit separate individual claims for each replaced part using the corresponding Op code.

NOTE 3: This TSB includes repair justification photos. Op times include VIN, Mileage, and Repair justification photo(s) as outlined in the Digital Documentation Policy.

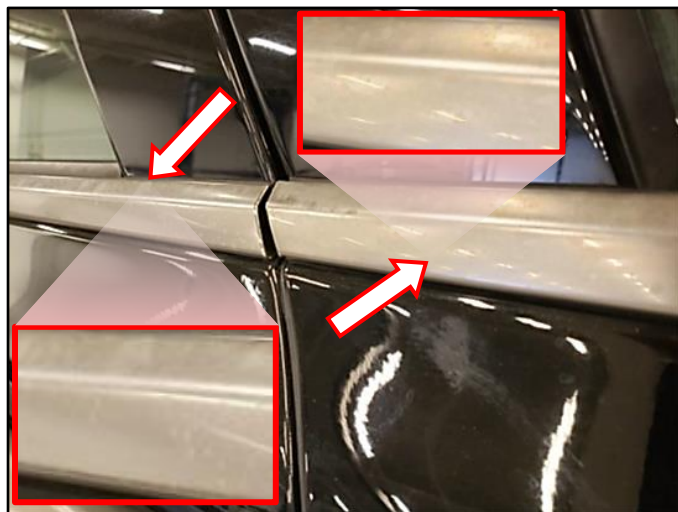
NOTE 4: The incident parts are subject to callback through the normal Warranty Technical Center (WTC) parts return process. **Claim is subject to debit if the part is not returned.**

NOTE 5: If a part is found in need of replacement while performing this TSB and the affected part is still under warranty, submit a separate claim using the same repair order. If the affected part is out of warranty, submit a Prior Approval request for goodwill consideration prior to performing the work.

Service Procedure:**DIGITAL DOCUMENTATION**

This TSB includes repair justification photos. Refer to the latest Warranty Digital Documentation Policy for requirements.

1. Inspect all exterior chrome surfaces on the vehicle to identify which areas are stained or discolored.



- 2.

DIGITAL DOCUMENTATION

Using STUI, take photos of each stained/discolored dark chrome trim with the last 6 digits of the VIN and the date of repair on a piece of paper.

Upload the photos to STUI.



3. Replace each affected dark chrome trim.
Refer to the applicable shop manual procedure for each part.
4. The service procedure is now complete.