

Field campaign

Topic	Software Update BiL 5.3.1 v1 to v2 Flying Spur 25MY (SC25/11)
Market area	Bentley: worldwide (2WBE),China 796 VW Import Comp. Ltd (Vico), Beijing (6796)
Brand	Bentley
Transaction No.	2077583/4
Campaign number	ED42
Note	
Type	
US code	

Vehicle data

25MY Flying Spur

Sales types

Type	MY	Brand	Designation	Engine code	Gearbox code	Final drive code
Z32*	2025	E		*	*	*

Documents

Document name
master.xml
ed42_vinlist.pdf

Notes



Technical background

Software updates must be applied to update the vehicles Baseline Integration Level (BiL).

The software update corrects the following Diagnostic trouble codes (DTCs):

- P060100: High Voltage Battery (Address 008C) Internal Control Module Memory Checksum Error
- P057F00: Battery "A" State of Charge Performance, B11B300 Igniter for high voltage battery interrupt
- P0A0B00: High Voltage System Interlock Circuit Performance (HVIL).

CAUTION

If the ED35 Campaign is showing as outstanding in ElsaPro, the ED35 campaign **MUST** be completed first.
– If ED35 is not completed first, this update will not succeed.

Remedy

The instructions within the 'Work' section **must** be conducted to completion.

Customer notification

Please ensure all applicable instructions are conducted at the nearest opportunity.

Warranty

SVM Update Time

Claim type: 790 or 710

Service number: ED42

Damage code: 0066

Criteria:01

Labour Operation Code: 01 51 00 00

Time: As per ODIS log (Must not exceed 200TU)

Parts

Not Applicable

Parts supply

Not Applicable

Parts despatch control

Not Applicable

Repair instructions



Technical background

Software updates must be applied to update the vehicles Baseline Integration Level (BiL).

The software update corrects the following Diagnostic trouble codes (DTCs):

- P060100: High Voltage Battery (Address 008C) Internal Control Module Memory Checksum Error
 - P057F00: Battery "A" State of Charge Performance, B11B300 Igniter for high voltage battery interrupt
 - P0A0B00: High Voltage System Interlock Circuit Performance (HVIL).
-

 **CAUTION**

If the ED35 Campaign is showing as outstanding in ElsaPro, the ED35 campaign **MUST** be completed first.

- If ED35 is not completed first, this update will not succeed.

Check

Check if the vehicle is already listed as repaired in "Repair history" (in ElsaPro).


Please also refer to the "Identification" section and check if a paint identification mark is evident in the vehicle.

If the vehicle is not shown in ElsaPro as repaired, and the identification mark is not present, please conduct the instructions within the 'Work' section to completion

Parts

Not Applicable

Work


 **CAUTION**

The Bentley ODIS-S Brand Version **MUST** be at least 2.35.1 (or higher)


 **CAUTION**

Before conducting the onward instructions, the operative **MUST** recheck the communication method in ODIS and ensure that DoIP is selected before proceeding. Within ODIS-S, perform the following:

- On the right hand side, select the "Admin" tile (Within 'Operating modes')
- Select "GFF sequence" (Within 'General information' section)
- Under the "Selection of Communication path" drop-down menu, select "Only permit DoIP communication".

 **CAUTION**

DO NOT, UNDER ANY CIRCUMSTANCES, ATTEMPT TO CONDUCT THE SOFTWARE UPDATE VIA THE CAN NETWORK. ONLY DoIP SHOULD BE USED WHEN PERFORMING THE SVM UPDATE.

 **CAUTION**

You **MUST ONLY** use the Diagnosis Interface VAS 6154 (WiFi Diagnostic Tool) in USB OPERATION or the CABLE-CONNECTED VAS 5055 for the reprogramming (updating) of the control units.

- If neither of these units are available, the VAS 5054 (A) may be used in USB MODE.
- **DO NOT** under any circumstances use a Bluetooth connection to conduct the reprogramming (updating) of any control units.

Battery Charger

 **CAUTION**

ONLY Chargers that meet the approved specification on the Mandatory Equipment List (available on the Bentley Hub) **MUST** be used.

- The charger must be set to a mode where a **MINIMUM** of 90a is supplied to the battery during the process. Typically, this is known as 'Power Supply Mode' or 'DIAG+ Mode'.
- A voltage of exactly 14.8v must be set and maintained throughout the process.
- Please refer to the manual to ensure that these requirements are met before beginning any SVM update

Preparation Before Update

 **WARNING**

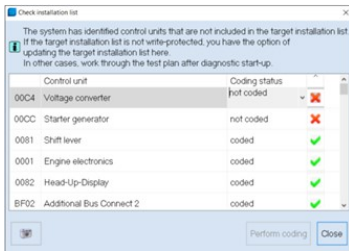
Hybrid Vehicles use a High Voltage System and therefore **MUST ONLY** be worked on by suitable personnel

 **CAUTION**

During the update, switch off all unnecessary consumers. For example, ventilation, seat heaters, interior illumination, exterior lights ect.

Conduct a full guided fault find of the vehicle.

If a 'Check Installation List' pop-up appears, select 'close' (see below image)



Referring to TPI 2075920, address any unknown faults **BEFORE** conducting any of the below updates.

Ensure that the correct battery charger is connected to the vehicle. – Refer to the "Battery Charger" Section above.

Obtaining Hotfix for ODIS-S

Visit <https://bentley.atheer.io/> and log in with the following case-sensitive account details.

- Username: bilupdate
- Password: Bentley123!

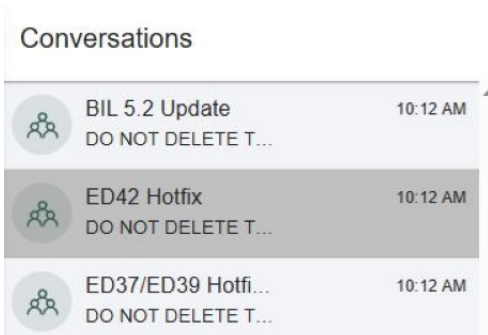
NOTICE

If you are already logged into your retailer account, you will need to logout first. To do this, click on your account initials (bottom left corner) and click "Sign Out".

After logging in, using the navigation bar on the left hand side, click on the 'conversations' tab



Next, click the conversation named "ED42 Hotfix"



NOTICE

You **MUST NOT** leave the conversation, remove users from the conversation, delete the conversation or alter the conversation in any way. The **ONLY** action you are permitted to perform is download the applicable file required for this campaign.

In this conversation, you will find a file named "ED42_Hotfix" and "ED42_Local_Flash_Files".

Left click each of the file names and download each folder.

After left-clicking the files to download them, the download will take circa 5-10 minutes, do not interrupt this process. You may need to wait a short period (internet speed dependent) for the files to download.

During/before the download commences, there may be a warning about a "pop-up" being blocked which will prevent the file from downloading, ensure to select option "Allow Pop-Ups from this website" to download the file. Wording may differ depending on web browser.

Locate the download file and extract it. To do this, right click the file, click "7 zip" and then "Extract here"

After successfully downloading the file, please logout of the account.

Loading ODIS-S Hotfix


With the hotfix you have downloaded from Atheer (ED42_Hotfix), load the hotfix "E_2.35.1_HF_BMC_BJB_204_207_V2_20250403-140521" into ODIS-S.

The Bentley ODIS-S Brand Version MUST be at least 2.35.1 (or higher).

With the 'ED42_Local_Flash_Files', copy the content of the folder into your root c:/temp drive on your ODIS device.

- FL_4M0915249AN_0201_UPD0004T0005_V001_S.odx
- FL_4M0915249AM_0207_ABJB7A60590M1_V001_S.odx
- FL_4M0915231AH_0204_XHX15EV0421M6_V001_S.odx

First SVM Code Input

 CAUTION
At this point, a suitable battery charger must be connected to the vehicle.

1. In ODIS-S, navigate to the "Special Functions" tab.
2. Navigate to 'SVM – Code Input', enter the SVM Code: "373ED4201".
3. On the next screen, ensure that the SVM code displayed is correct.

4. You will be shown the communication type. **This MUST be set to "DoIP"**.
 - a. If "DoIP" is not selected, select option 3 until the communication type is set to "DoIP".

5. After ensuring DoIP is selected, and a suitable battery charger is connected, select Option 1 – "Yes".
 - a. From here, all control modules will be interrogated and the SVM action will take place.

6. Ensure that the diagnostic device remains connected for the duration of the update.

7. Follow all on-screen prompts until the program ends.
 - a. If you have a prompt stating there is no communication established with 00CC, select done/continue.

8. Follow the on-screen instructions to completion. If you **do not** encounter any errors, please proceed to the "HIGH VOLTAGE SHUTDOWN" section.

 NOTICE

If you receive an error code: 8088, you must follow the below instructions.

1. In ODIS-S, navigate to the “Special Functions” tab.
2. Navigate to ‘SVM – Code Input’ and enter the SVM code: “373A5CONFIG01”
3. On the next screen, ensure that the SVM code displayed is correct.

4. You will be shown the communication type. **This MUST be set to “DoIP”.**
 - a. If “DoIP” is not selected, select option 3 until the communication type is set to “DoIP”.

5. After ensuring DoIP is selected, and a suitable battery charger is connected, select Option 1 – “Yes”.
 - a. From here, all control modules will be interrogated and the SVM action will take place.

6. Ensure that the diagnostic device remains connected for the duration of the update.

7. Follow all on-screen prompts until the program ends.
 - a. If you have a prompt stating there is no communication established with 00CC, select done/continue.

8. You may or may not encounter an error after the update. Proceed regardless.

9. Refer back to the start of “First SVM Code Input” and repeat the process to input the SVM code “373ED4201”.

10. Perform a whole vehicle DTC clear by exiting the current diagnostic session.

11. Perform a 15 minute CAN bus sleep.
 - a. Turn off the ignition.
 - b. Remove all equipment from the car (Diagnostic tester/dongle, battery charger, keys).
 - c. Close all doors, windows, bonnet and boot lid.
 - d. Lock the vehicle to perform a CAN-BUS sleep (wait 15 minutes).

12. Re-run guided fault finding and clear DTCs

High Voltage Shutdown



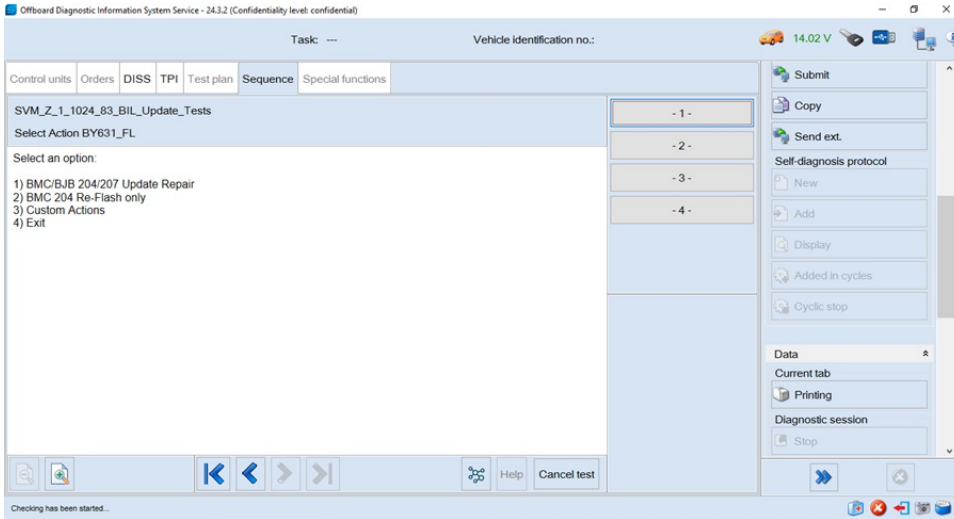
De-energise the high-voltage system via ODIS-S. Refer to ElsaPro, Repair Group 93 – “De-energising high-voltage system” to do so.

1. After de-energisation, Refer to ElsaPro Repair Group 70 ‘Boot carpet – To remove and fit’. Remove the boot floor and gain access to the earth cable from the 12v battery negative and the body in white (This access will be required later in the test plan).

2. Navigate to ‘Special functions’ and select ‘SVM – Pre 372BIL5201 Hotfix Routines’, then ‘Perform test’.

3. Switch to ‘DoIP’ when prompted.

4. Select ‘1) BMC/BJB 204/207 Update Repair’ and follow the on-screen instructions.
 - When the tester attempts to flash ‘008C - Battery regulation control module’ you may receive a message informing you that the pre-conditions have not been met. Select ‘done/continue’.
 - On the following screen (shown below) select option 2 to attempt to flash the ECU – this should allow the ‘008C - Battery regulation control module’ to flash successfully.



- If the flash fails, perform the below actions.

1. Exit the test.

2. Allow the car to sleep for 5 minutes.

- Turn off the ignition.
- Remove all equipment from the car (Diagnostic tester/dongle, battery charger, keys).
- Close all doors, windows, bonnet and boot lid.
- Lock the vehicle to perform a CAN-BUS sleep (wait 5 minutes).

3. Clear DTCs from '008C - Battery regulation control module'.

3a. To do this, right click on control unit 008C, click Guided Functions and then click 'Clear Fault Memory'.

4. Return to 'Special functions' and run the test plan 'SVM – Pre 372BIL5201 Hotfix Routines'.

5. Within this test plan, select option 2 and run until completion.

6. Once the test has been completed, right click on control unit 008C and select guided functions. Then, read ECU Identification and ensure that the 06D0 (Battery Junction Box) appears as a subsystem within the read identification test plan.

7. Continue to the next SVM update.

Final SVM Code Input



WARNING

Re-energise the high-voltage system via ODIS-S. Refer to ElsaPro, Repair Group 93 – “Re-energising high-voltage system” to do so.

1. After re-energising the High Voltage System, navigate to the “Special Functions” tab in ODIS-S.
2. Navigate to 'SVM – Code Input' and enter the SVM Code: “373531COM02”.

3. On the next screen, ensure that the SVM code displayed is correct.
4. You will be shown the communication type. **This MUST be set to "DoIP"**.
 - a. If "DoIP" is not selected, select option 3 until the communication type is set to "DoIP".
5. After ensuring DoIP is selected, and a suitable battery charger is connected, select Option 1 – "Yes".
 - a. From here, all control modules will be interrogated and the SVM action will take place.
6. Ensure that the diagnostic device remains connected for the duration of the update.
7. Follow all on-screen prompts until the program ends.
 - a. If you have a prompt stating there is no communication established with 00CC, select done/continue.
8. Follow the on-screen instructions to completion.
9. If you are presented with this screen (Fig 3) at the end of the update, the update was successful. Please continue to step 11.

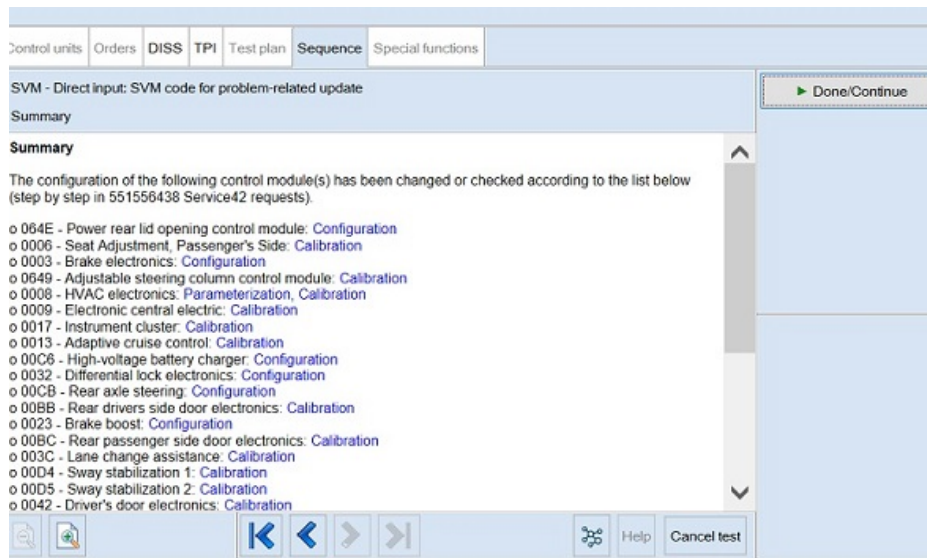


Fig 3

10. If you encounter any errors during the update, please raise a FULL TECHNICAL DISS query.
 - a. Customer Statement: "ED42 Support"
 - b. Workshop Findings: Give a summary of the error encountered and ensure that the latest Guided Fault Finding log is submitted online.
11. After successful completion of the update, perform the following.
 - a. Turn off the ignition.
 - b. Remove all equipment from the car (Diagnostic tester/dongle, battery charger, keys).
 - c. Close all doors, windows, bonnet and boot lid.
 - d. Lock the vehicle to perform a CAN-BUS sleep (wait 15 minutes).
12. After 15 minutes, unlock and open the driver's door. Turn on the ignition, re-connect the battery charger and diagnostic dongle.
13. Re-run guided fault finding and clear DTCs. If any faults are present, refer to TPI 2075920. If any other faults are present, please raise a full DISS query with a fill GFF log uploaded online stating the error encountered.

Identification

Once the applicable action has been conducted, the operative must submit a warranty claim as this will show the service campaign action as

complete within Elsa Pro "Repair history".

You must also add a blue paint mark as per the picture below.



[▲ Repair instructions](#) [▲ Notes](#)

AMERICAS

SCBBR6ZG0SC021498
 SCBBR6ZG0SC021534
 SCBBR6ZG0SC021596
 SCBBR6ZG0SC021758
 SCBBR6ZG0SC022084
 SCBBR6ZG0SC022232
 SCBBR6ZG0SC022313
 SCBBR6ZG0SC022327
 SCBBR6ZG1SC021526
 SCBBR6ZG1SC021882
 SCBBR6ZG1SC022160
 SCBBR6ZG1SC022238
 SCBBR6ZG1SC022255
 SCBBR6ZG1SC022319
 SCBBR6ZG2SC021423
 SCBBR6ZG2SC021437
 SCBBR6ZG2SC021907
 SCBBR6ZG2SC022152
 SCBBR6ZG2SC022183
 SCBBR6ZG2SC022331
 SCBBR6ZG3SC021303
 SCBBR6ZG3SC021317
 SCBBR6ZG3SC021415
 SCBBR6ZG3SC021429
 SCBBR6ZG3SC021608
 SCBBR6ZG3SC021639
 SCBBR6ZG3SC021687
 SCBBR6ZG3SC021768
 SCBBR6ZG3SC021902
 SCBBR6ZG3SC021947
 SCBBR6ZG3SC022063
 SCBBR6ZG3SC022127
 SCBBR6ZG3SC022189
 SCBBR6ZG3SC022192
 SCBBR6ZG3SC022242
 SCBBR6ZG3SC022306
 SCBBR6ZG3SC022340
 SCBBR6ZG3SC022354
 SCBBR6ZG4SC021343
 SCBBR6ZG4SC021374
 SCBBR6ZG4SC021486
 SCBBR6ZG4SC021519
 SCBBR6ZG4SC021584

ASIA PACIFIC

SCBBF53S0SC021579
 SCBBF53S0SC021811
 SCBBF53S1SC021543
 SCBBF53S1SC021977
 SCBBF53S4SC021472
 SCBBF53S6SC021926
 SCBBF53S6SC022249
 SCBBF53S7SC021949
 SCBBF53S9SC021886
 SCBBF53SXSC021959
 SCBBJ53S3SC021896
 SCBBJ53S7SC021349
 SCBBJ53S7SC022338
 SCBBJ53S9SC022230
 SCBBR53S0SC021718
 SCBBR53S0SC022268
 SCBBR53S3SC021695
 SCBBR53S4SC021592
 SCBBR53S4SC021995
 SCBBR53S6SC021321
 SCBBR53S6SC021657
 SCBBR53S6SC021738
 SCBBR53S6SC021755
 SCBBR53S6SC021853
 SCBBR53S6SC022288
 SCBBR53S7SC021361
 SCBBR53S7SC021716
 SCBBR53S8SC021613
 SCBBR53S8SC021725
 SCBBR53S8SC021871
 SCBBR53S8SC022020
 SCBBR53S9SC021667
 SCBBR53S9SC021765
 SCBBR53S9SC021880
 SCBBR53SXSC021922
 SCBBR53SXSC021953

CHINESE MAINLAND HK AND
MACAO

SCBBF53S1SC021557
 SCBBF53S1SC021588
 SCBBF53S1SC021669
 SCBBF53S4SC021598
 SCBBF53S6SC021571
 SCBBF53S9SC021628
 SCBBG53S0SC021269
 SCBBG53S0SC021286
 SCBBG53S0SC021305
 SCBBG53S0SC021319
 SCBBG53S0SC021417
 SCBBG53S0SC021451
 SCBBG53S0SC021529
 SCBBG53S0SC021787
 SCBBG53S0SC021918
 SCBBG53S0SC021966
 SCBBG53S0SC022065
 SCBBG53S0SC022115
 SCBBG53S0SC022180
 SCBBG53S0SC022194
 SCBBG53S0SC022244
 SCBBG53S0SC022308
 SCBBG53S1SC021281
 SCBBG53S1SC021443
 SCBBG53S1SC021491
 SCBBG53S1SC021507
 SCBBG53S1SC021541
 SCBBG53S1SC021751
 SCBBG53S1SC021815
 SCBBG53S1SC021989
 SCBBG53S1SC022043
 SCBBG53S1SC022057
 SCBBG53S1SC022091
 SCBBG53S1SC022107
 SCBBG53S1SC022141
 SCBBG53S1SC022172
 SCBBG53S1SC022205
 SCBBG53S1SC022219
 SCBBG53S1SC022270
 SCBBG53S1SC022303
 SCBBG53S1SC022334
 SCBBG53S2SC021273
 SCBBG53S2SC021290

SCBBR6ZG4SC021603
SCBBR6ZG4SC021648
SCBBR6ZG4SC021732
SCBBR6ZG4SC021746
SCBBR6ZG4SC021939
SCBBR6ZG4SC022105
SCBBR6ZG4SC022170
SCBBR6ZG4SC022203
SCBBR6ZG4SC022282
SCBBR6ZG4SC022315
SCBBR6ZG5SC021271
SCBBR6ZG5SC021447
SCBBR6ZG5SC021528
SCBBR6ZG5SC021898
SCBBR6ZG5SC021951
SCBBR6ZG5SC022226
SCBBR6ZG5SC022260
SCBBR6ZG5SC022274
SCBBR6ZG5SC022369
SCBBR6ZG6SC021263
SCBBR6ZG6SC021327
SCBBR6ZG6SC021523
SCBBR6ZG6SC021652
SCBBR6ZG6SC021795
SCBBR6ZG6SC022008
SCBBR6ZG6SC022123
SCBBR6ZG6SC022221
SCBBR6ZG6SC022266
SCBBR6ZG6SC022297
SCBBR6ZG7SC021403
SCBBR6ZG7SC021479
SCBBR6ZG7SC021563
SCBBR6ZG7SC021594
SCBBR6ZG7SC021630
SCBBR6ZG7SC021708
SCBBR6ZG7SC022213
SCBBR6ZG7SC022258
SCBBR6ZG7SC022292
SCBBR6ZG7SC022325
SCBBR6ZG8SC021295
SCBBR6ZG8SC021779
SCBBR6ZG8SC021782
SCBBR6ZG8SC022026
SCBBR6ZG8SC022253
SCBBR6ZG8SC022317

SCBBG53S2SC021323
SCBBG53S2SC021337
SCBBG53S2SC021385
SCBBG53S2SC021435
SCBBG53S2SC021449
SCBBG53S2SC021533
SCBBG53S2SC021581
SCBBG53S2SC021659
SCBBG53S2SC021726
SCBBG53S2SC021807
SCBBG53S2SC021824
SCBBG53S2SC022018
SCBBG53S2SC022049
SCBBG53S2SC022133
SCBBG53S2SC022228
SCBBG53S3SC021265
SCBBG53S3SC021301
SCBBG53S3SC021315
SCBBG53S3SC021329
SCBBG53S3SC021346
SCBBG53S3SC021380
SCBBG53S3SC021413
SCBBG53S3SC021427
SCBBG53S3SC021511
SCBBG53S3SC021606
SCBBG53S3SC021637
SCBBG53S3SC021721
SCBBG53S3SC021735
SCBBG53S3SC021833
SCBBG53S3SC021847
SCBBG53S3SC021878
SCBBG53S3SC021993
SCBBG53S3SC022013
SCBBG53S3SC022061
SCBBG53S3SC022111
SCBBG53S3SC022223
SCBBG53S3SC022240
SCBBG53S3SC022299
SCBBG53S4SC021257
SCBBG53S4SC021307
SCBBG53S4SC021341
SCBBG53S4SC021369
SCBBG53S4SC021372
SCBBG53S4SC021405
SCBBG53S4SC021453

SCBBR6ZG8SC022348
SCBBR6ZG9SC021399
SCBBR6ZG9SC021421
SCBBR6ZG9SC021466
SCBBR6ZG9SC021483
SCBBR6ZG9SC021600
SCBBR6ZG9SC021645
SCBBR6ZG9SC021676
SCBBR6ZG9SC021838
SCBBR6ZG9SC021855
SCBBR6ZG9SC021869
SCBBR6ZG9SC022147
SCBBR6ZG9SC022178
SCBBR6ZG9SC022262
SCBBR6ZG9SC022360
SCBBR6ZGXSC021492
SCBBR6ZGXSC021590
SCBBR6ZGXSC021962
SCBBR6ZGXSC022352

SCBBG53S4SC021484
SCBBG53S4SC021503
SCBBG53S4SC021517
SCBBG53S4SC021694
SCBBG53S4SC021842
SCBBG53S4SC021985
SCBBG53S4SC022005
SCBBG53S4SC022036
SCBBG53S4SC022053
SCBBG53S4SC022215
SCBBG53S4SC022358
SCBBG53S5SC021333
SCBBG53S5SC021364
SCBBG53S5SC021378
SCBBG53S5SC021395
SCBBG53S5SC021459
SCBBG53S5SC021641
SCBBG53S5SC021655
SCBBG53S5SC021803
SCBBG53S5SC021851
SCBBG53S5SC021865
SCBBG53S5SC021929
SCBBG53S5SC022028
SCBBG53S5SC022076
SCBBG53S5SC022210
SCBBG53S5SC022286
SCBBG53S6SC021261
SCBBG53S6SC021311
SCBBG53S6SC021325
SCBBG53S6SC021499
SCBBG53S6SC021521
SCBBG53S6SC021566
SCBBG53S6SC021616
SCBBG53S6SC021650
SCBBG53S6SC021664
SCBBG53S6SC021678
SCBBG53S6SC021731
SCBBG53S6SC021745
SCBBG53S6SC021860
SCBBG53S6SC021924
SCBBG53S6SC022099
SCBBG53S6SC022121
SCBBG53S6SC022149
SCBBG53S6SC022295
SCBBG53S6SC022362

SCBBG53S7SC021253
SCBBG53S7SC021351
SCBBG53S7SC021382
SCBBG53S7SC021401
SCBBG53S7SC021432
SCBBG53S7SC021561
SCBBG53S7SC021706
SCBBG53S7SC021799
SCBBG53S7SC021933
SCBBG53S7SC022001
SCBBG53S7SC022032
SCBBG53S7SC022290
SCBBG53S7SC022368
SCBBG53S8SC021293
SCBBG53S8SC021357
SCBBG53S8SC021391
SCBBG53S8SC021407
SCBBG53S8SC021441
SCBBG53S8SC021455
SCBBG53S8SC021469
SCBBG53S8SC021715
SCBBG53S8SC021777
SCBBG53S8SC021892
SCBBG53S8SC021911
SCBBG53S8SC021973
SCBBG53S8SC022024
SCBBG53S8SC022072
SCBBG53S8SC022086
SCBBG53S8SC022119
SCBBG53S8SC022136
SCBBG53S8SC022167
SCBBG53S8SC022198
SCBBG53S8SC022329
SCBBG53S8SC022346
SCBBG53S9SC021397
SCBBG53S9SC021464
SCBBG53S9SC021478
SCBBG53S9SC021481
SCBBG53S9SC021495
SCBBG53S9SC021514
SCBBG53S9SC021545
SCBBG53S9SC021576
SCBBG53S9SC021674
SCBBG53S9SC021741
SCBBG53S9SC021772

SCBBG53S9SC021979
SCBBG53S9SC022081
SCBBG53S9SC022095
SCBBG53S9SC022145
SCBBG53S9SC022162
SCBBG53S9SC022176
SCBBG53SXSC021389
SCBBG53SXSC021411
SCBBG53SXSC021425
SCBBG53SXSC021439
SCBBG53SXSC021456
SCBBG53SXSC021702
SCBBG53SXSC021828
SCBBG53SXSC021862
SCBBG53SXSC022039
SCBBG53SXSC022154
SCBBG53SXSC022185
SCBBG53SXSC022235
SCBBG53SXSC022350

EUROPE

SCBBF53S0SC021632
SCBBF53S0SC022196
SCBBF53S1SC021297
SCBBF53S2SC022264
SCBBF53S3SC021611
SCBBF53S6SC021537
SCBBF53S7SC021997
SCBBF53S8SC021376
SCBBF53S8SC021474
SCBBF53S8SC021586
SCBBF53S8SC022284
SCBBF53S9SC021354
SCBBF53S9SC022276
SCBBF53SXSC021251
SCBBF53SXSC021525
SCBBF53SXSC022125
SCBBF53SXSC022139
SCBBJ53S4SC021602
SCBBJ53S8SC021506
SCBBJ53S9SC021515

INTERNAL

SCBBF53S3SC021284
SCBBF53S6SC021683

MIDDLE EAST AFRICA &
INDIA

SCBBF53S8SC021409
SCBBF5ZG1SC021299
SCBBF5ZG1SC021335
SCBBF5ZG1SC021366
SCBBF5ZG1SC021836
SCBBF5ZG1SC022310
SCBBF5ZG1SC022372
SCBBF5ZG2SC021277
SCBBF5ZG2SC021697
SCBBF5ZG3SC022342
SCBBF5ZG4SC021359
SCBBF5ZG4SC021555
SCBBF5ZG4SC021703
SCBBF5ZG4SC022365
SCBBF5ZG6SC021671
SCBBF5ZG7SC021288
SCBBF5ZG7SC021873
SCBBF5ZG7SC022067
SCBBF5ZG7SC022103
SCBBF5ZG7SC022165
SCBBF5ZG8SC021574
SCBBF5ZG8SC021686
SCBBF5ZG8SC021722

SCBBF5ZG9SC021275
SCBBF5ZG9SC021681
SCBBF5ZGXSC021690
SCBBF5ZGXSC022046
SCBBF5ZGXSC022144
SCBBH53S0SC022208
SCBBH53S3SC021568
SCBBH53S7SC022321
SCBBJ53S1SC021749

UNITED KINGDOM
SCBBF53S2SC021387
SCBBF53S2SC021762
SCBBF53S2SC021955
SCBBF53S2SC022278
SCBBF53S3SC021625
SCBBF53S3SC022158
SCBBF53S4SC022010
SCBBF53S5SC021559
SCBBF53S5SC021710
SCBBF53S5SC021819
SCBBF53S8SC021698
SCBBF53S9SC022200
SCBBF53SXSC021640