

 Preview Solution CBR-439-7

Volvo Chassis - Water leaking Around The Windshield - Model Year 2018 and Newer

Published 13 May 2025

Valid For

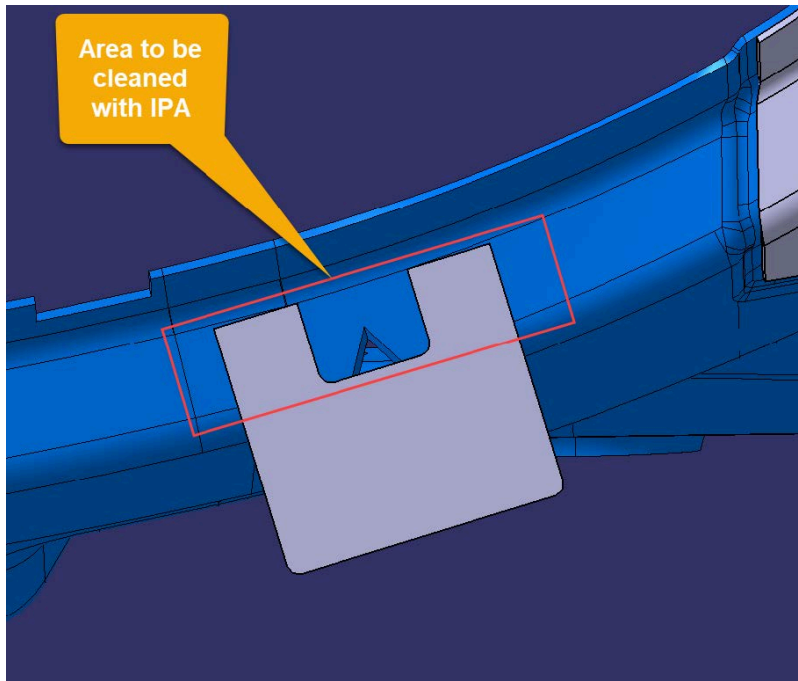
Volvo Chassis - VN

Model Years - 2018 to current

For Leaks At The Lower Corner Of The Windshield

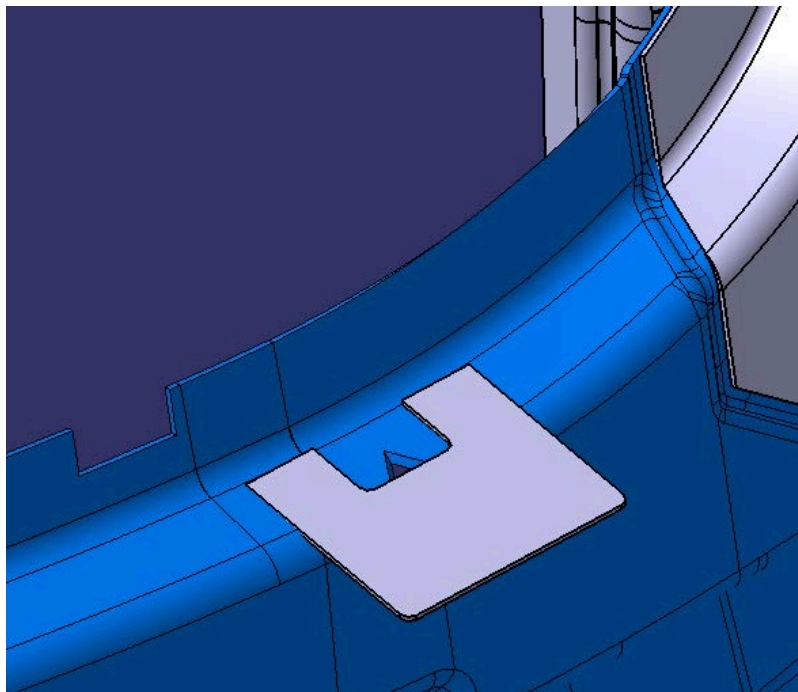
It has been found that the hood may not properly deflect water away from the "bird-beak" openings around the windshield opening.

Two flaps ([PN 78565353](#)) are required per vehicle, and they are to be positioned at the bird-beak drain features at the lower corners of the windshield opening. The bonding area on the BIW is to be cleaned with isopropyl alcohol prior to attaching the flaps.



Position one flap on each side of the windshield opening at bird-beak drain feature. Ensure that the adhesivebacked

tabs are positioned on the flat surface of the opening as shown and that the drain feature is centered between them. Apply pressure to ensure good adhesion.



This CBR solution provides the replacement procedure for properly sealing VN windshields before installing the aftermarket seal and windshield.

Materials & Equipment Required:

- Aftermarket Windshield Seal
- Sealant (Included)
- Proper Safety Equipment:
 - Chemical-resistant gloves
 - Eye protection
 - Apron or other protective gear as required by safety or company regulations



Procedure:

1. Preparation

- Ensure Safety: Wear proper safety equipment (chemical-resistant gloves, eye protection, apron, etc.).
- Windshield Removal: Remove the windshield and seal only if the existing seal is leaking or damaged.

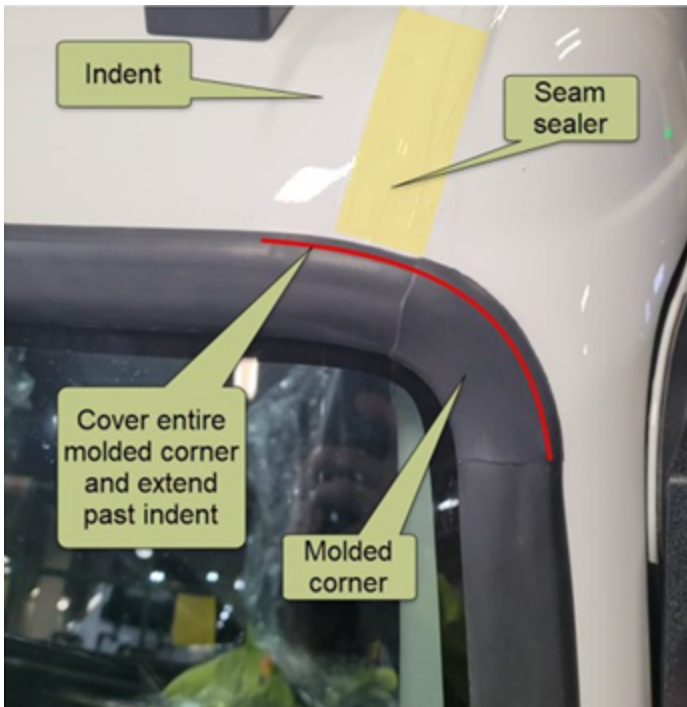
2. Cleaning

- Pinch Weld Area: Clean the dirt and old adhesive away from the pinch weld area to minimize contamination before applying new adhesive.



3. Applying Adhesive

- Seam Sealing: Using the included sealant, apply adhesive to the top corners of the A-pillars. Ensure the adhesive covers any gaps in the pinch weld area up to the roof seam.



4. Installing the Seal and Windshield

- Seal Installation: Install the new seal and windshield as per the standard procedure.
- Additional Sealant (if necessary): If gaps remain in the top A-pillar corners, apply additional sealant to prevent water intrusion.

5. Cleaning the Cab Surface

- Surface Cleaning: Clean the surrounding cab surface with the appropriate solvent.

6. Post-Installation Instructions

- Cure Time: Inform the customer about the proper curing procedures after installation.
- Final Inspection: Release the truck to the customer once the curing time is completed.

Related links and attachments

No links or attachments available



Share

to others that might find it helpful



Feedback

[Give feedback](#)

to help improve the content of this article