



SERVICE BULLETIN

Subject: TS45 Mux Units Pin Changing and Diode Checking Bulletin

Bulletin Type: Service Campaign Recall

Bulletin No: TS45-SR-2502

PQR No: 500000007839

Rev No:00

Ref. No: 700004730

Vehicle Model: TS45

Flat Rate Time / Code: 110 min

Date of issue: 09.05.2025

Modify Before: 09.05.2026

What to do with off coming parts:

- Scrap
- Return
- Use with additional parts
- On consignment
- No off coming parts

What to do with outstanding parts of previous revision:

- Scrap
- Return
- Use with additional parts
- On consignment
- No outstanding parts

Description of the modification:

This bulletin aims to check and solve Mux 06A033 and 06A037 issues.

Bulletin Responsible: Bahadır Kaya, İbrahim Oğuz

Published & Approved By: Cemre Kılınc

SAFETY INSTRUCTIONS

1. Mechanical Requested Dress Code

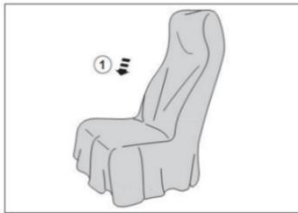


WARNING:

- Dress properly to avoid personal injury and damage to the vehicle

- ✓ Always wear protective clothing
- ✓ Do not wear any worn or loose-fitting clothing
- ✓ Remove jewelry before starting to work
- ✓ In case of long hair, use hairnet
- ✓ The illustration on the left shows some of the correct and incorrect clothing
- ✓ Sharp edged items should be avoided in order not to scratch vehicle (i.e. belts, watches, necklace)

2. Protect Seats when Mechanic Starts Working

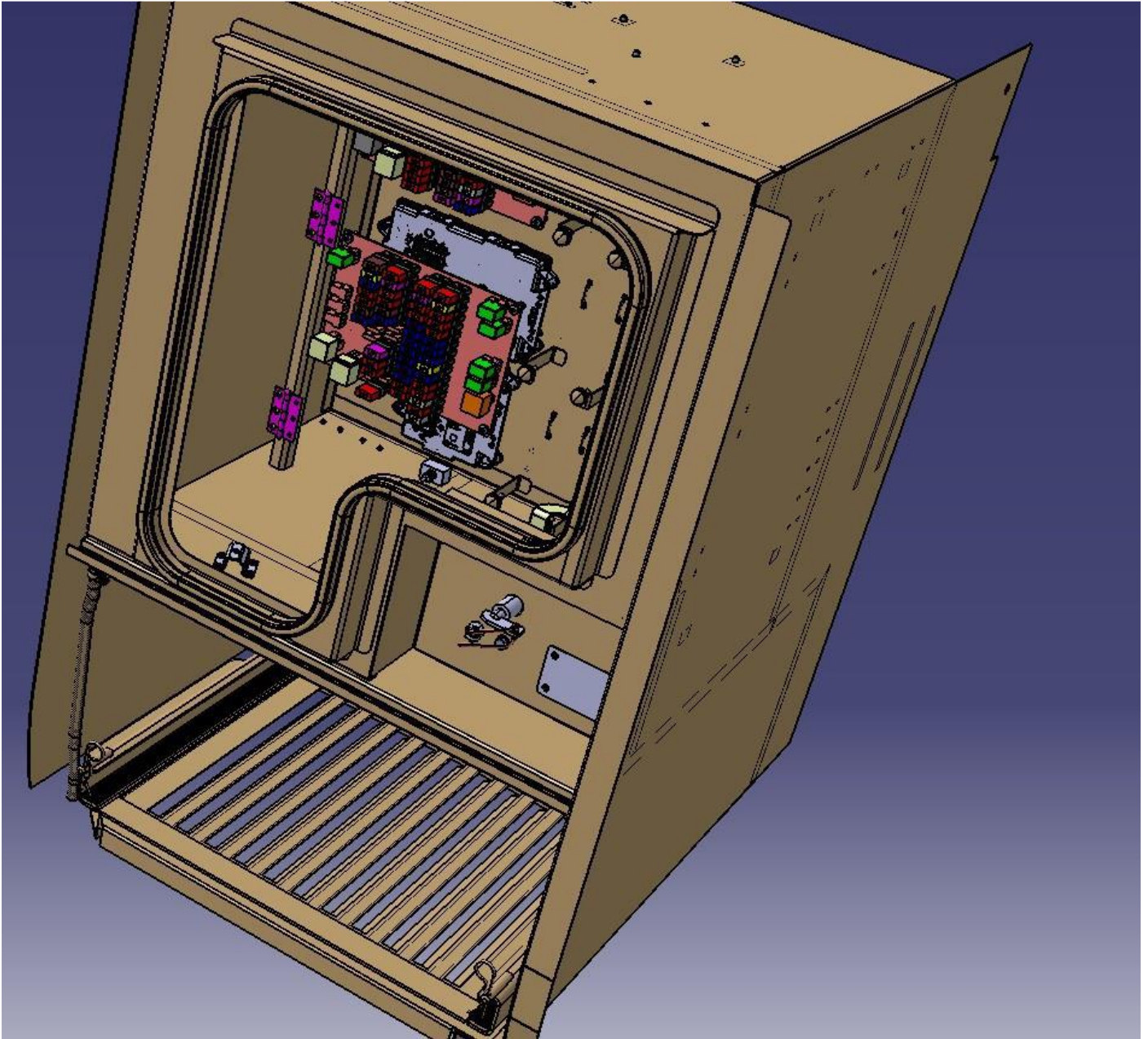


- ✓ Seats, trimming, upholstery stuff and carpeting should be protected with appropriate coverings.

3. Welding on the Chassis

- a. Always disconnect the batteries (starting with the negative lead).
- b. Disconnect the connectors of electrical and electronic equipment (electronic control units, sensors and actuators) if they are less than 2 meters away from the chassis part to be welded or the earth terminal of the welding equipment.
- c. The earth terminal should never be attached to vehicle components such as engine, axles and springs. Arcing on these parts is not permitted, because of the risk of damage to bearings, springs, etc.
- d. The earth terminal must make good contact and be placed as close as possible to the part to be welded.
- e. Plastic pipes, rubber parts and parabolic springs should be well protected against welding spatter and temperatures higher than 70°.
- f. The contact switch must not be in the accessory or contact position. The contact key should be removed.
- g. Reconnect in reversed order of disconnecting. Ensure that a good earth connection is made between chassis, engine and cab.

- 1-) Open the relay panel lid. Locate the MUX5-B 1.1 Which is numbered as 06A033.



2.) Step 1: Check the diode on the “P12V003-247” socket. If there is no diode on this pin, you should add the diode that in the part list , as “Figure 1.1”.

If there is a diode, then check the diode polarity and make sure that this is good and working properly. If this diode is damaged, replace it.

Step 2: Remove the cable on pin **B15** in the P06A033-B socket on the front relay panel. Blind and insulate the removed cable with electrical tape “Figure 1.1”

Step 3: Remove “P01V003-24” diode. Then join the cables “01K027-30-6” and “0A6033-0-5” each other. **Use solder for joining wires.** Then make sure that there is a good joint and insulate joint with electrical tape.

The implementation must match the Figure 1.2.

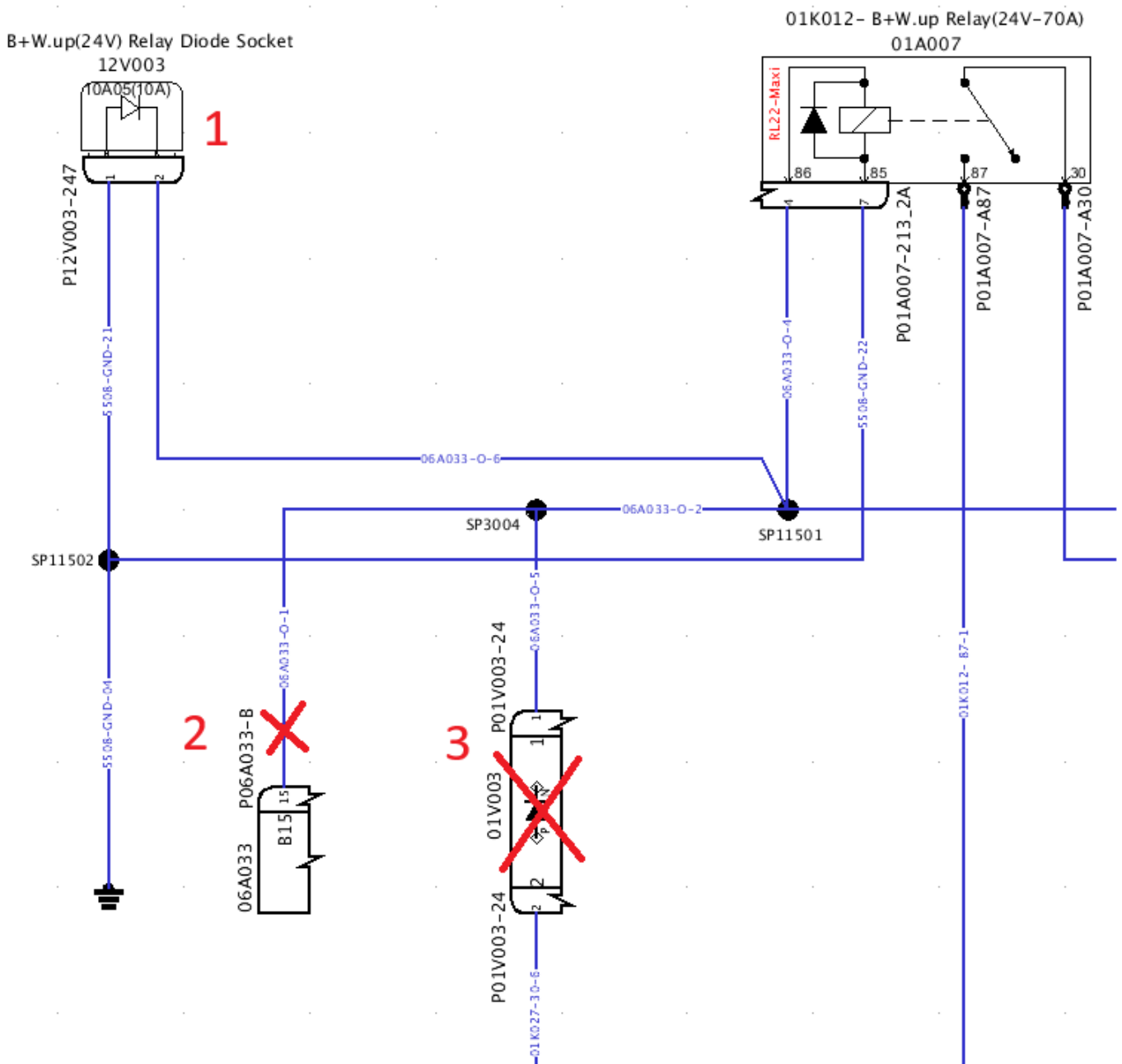


Figure 1.1 Existing Diagram

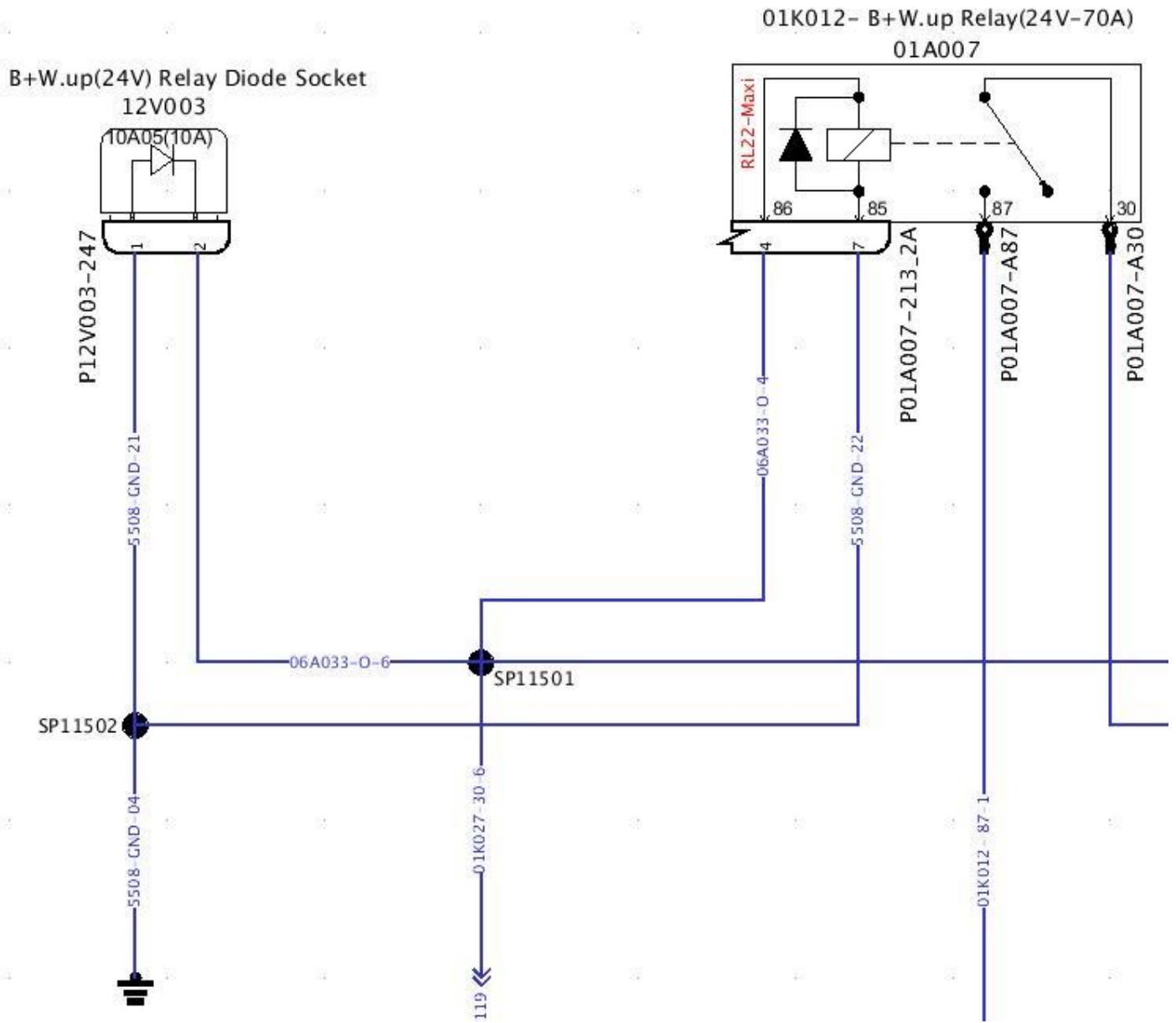


Figure 1.2 – Revised Diagram for Figure 1.1

3.) Remove the cable “08Y001-2” cable from front relay panel P06A033-B pin **B16**, cut the its terminal from wire then crimp the new terminal “9402-158Y”. Connect this cable to P06A033-B pin “**B24**” in Figure 2.

Then check the diode on the “10V001” socket. If there is no diode on this pin, you should add the diode that in the part list , as “**Figure 2**”.

If there is a diode, then check the diode polarity and make sure that this is good and working properly. If this diode is damaged, replace it.

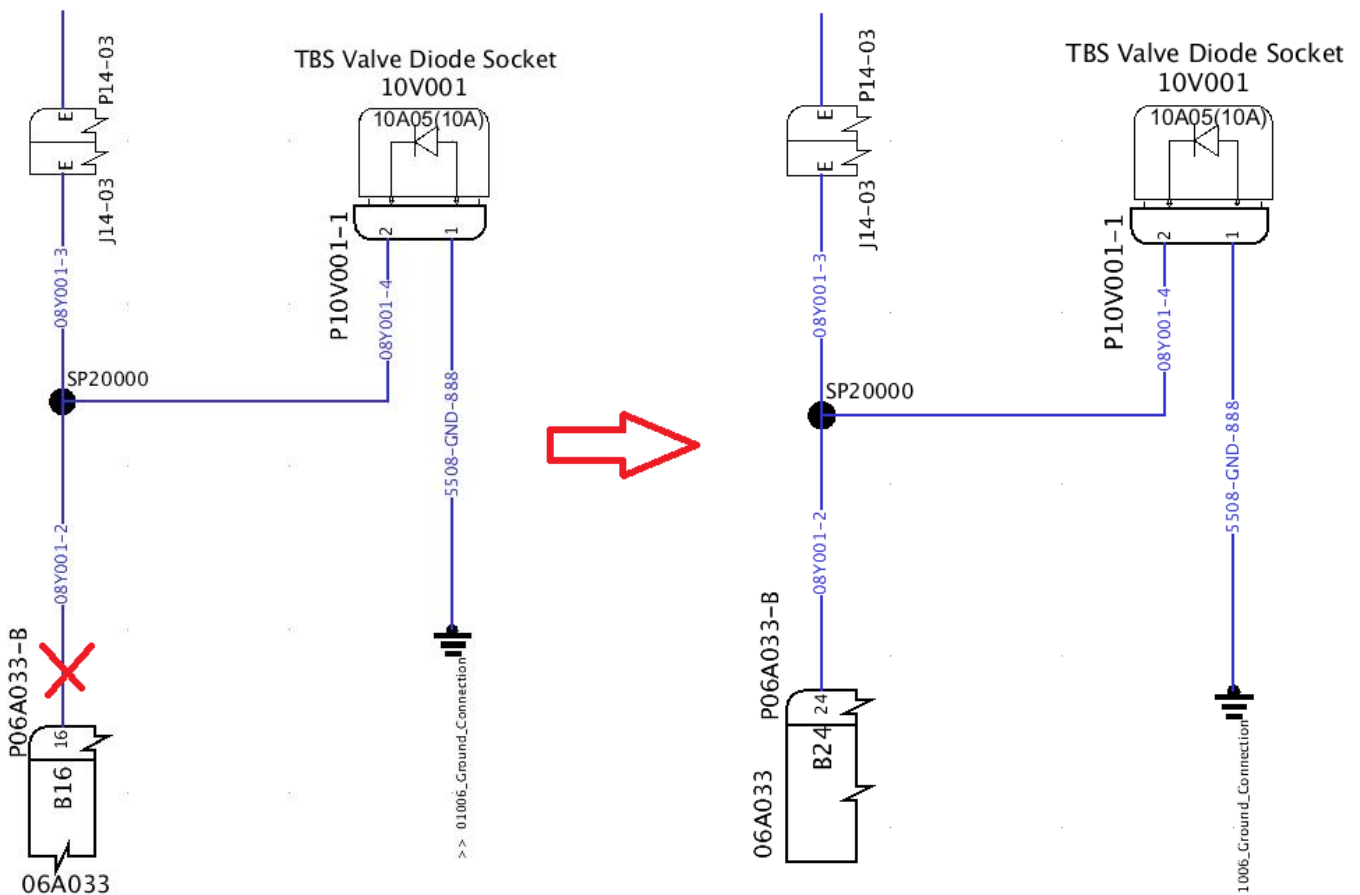


Figure -2- Moving B16 pin to B24

3-) Step 1: At front relay panel, remove the **P12V003-4** diode and join the “**02K003-30-1**” cable and “**01K017-87a-1**” cable each other. Use solder for joining wires. Then make sure that there is a good joint and insulate joint with electrical tape.

Step 2: Find “**P01A007-216-1A**” socket from the front relay panel, remove the “**RL-B+-4**” cable from pin8 . Then blind and insulate the removed cable with electrical tape.

Step 3: Remove “**01K017-87a-1**” cable from pin1 of “**P01A007-216-1A**” socket then connect it to pin8.

The implementation must match “Figure 3.2”

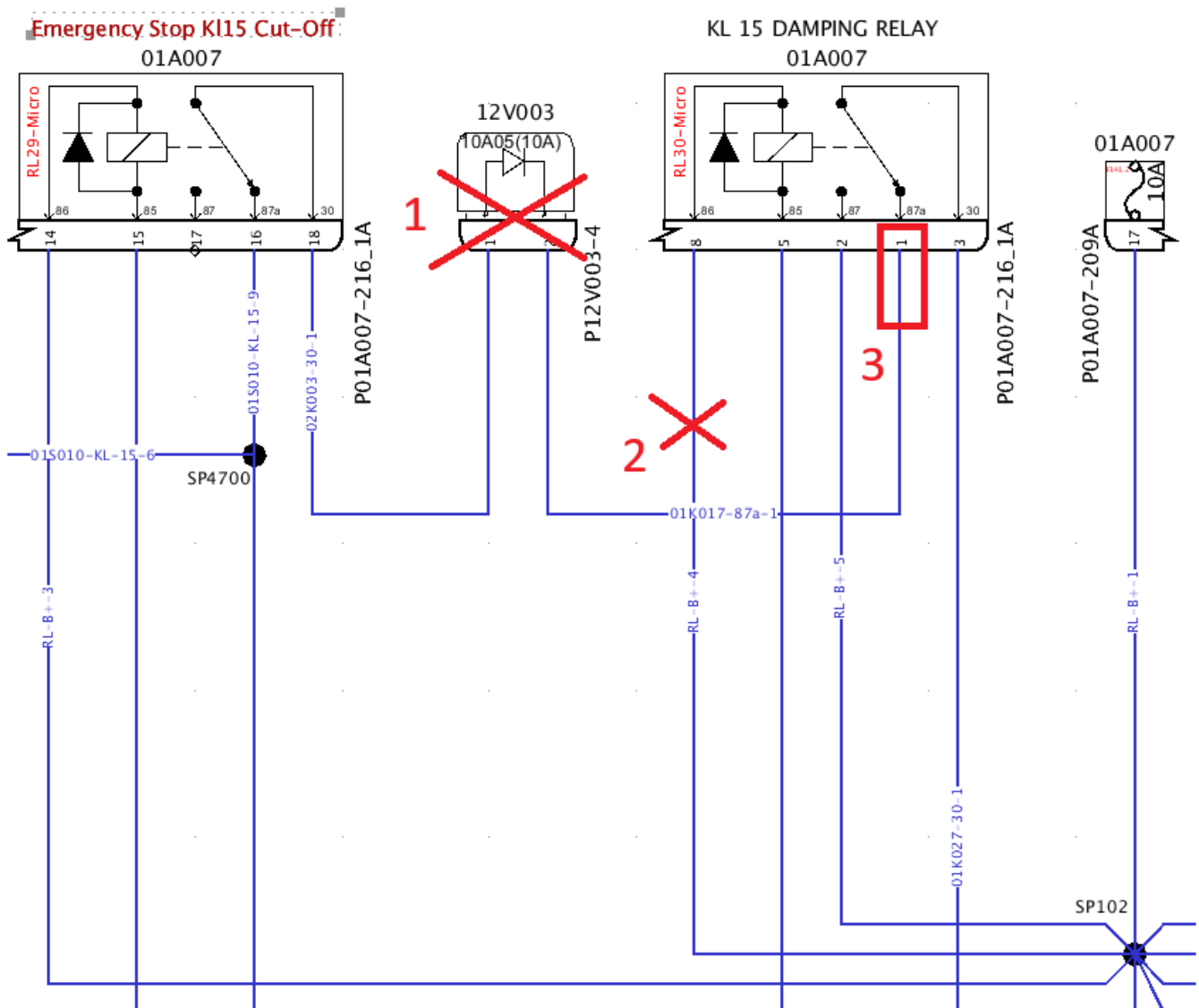


Figure-3.1- Existing Diagram

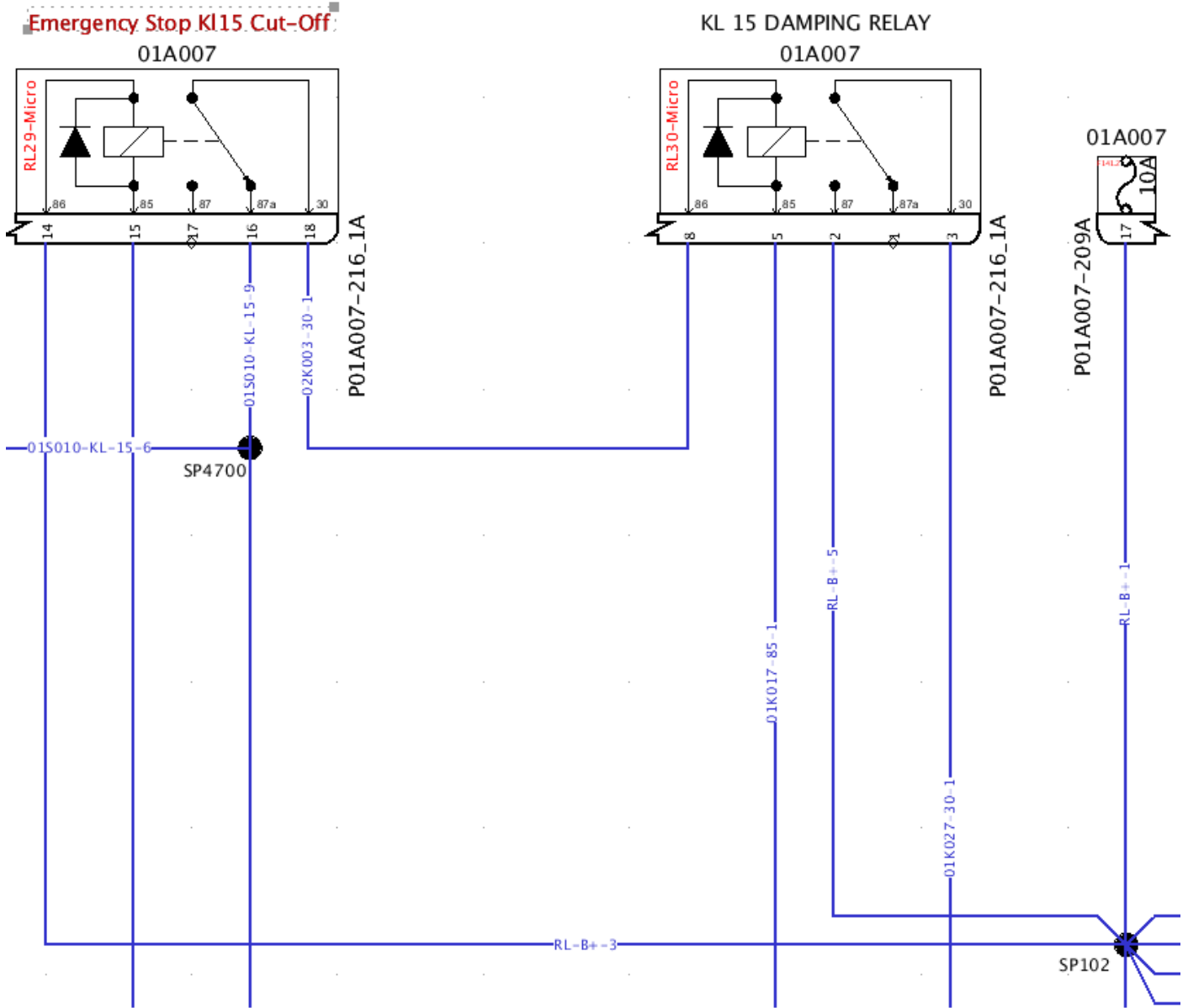
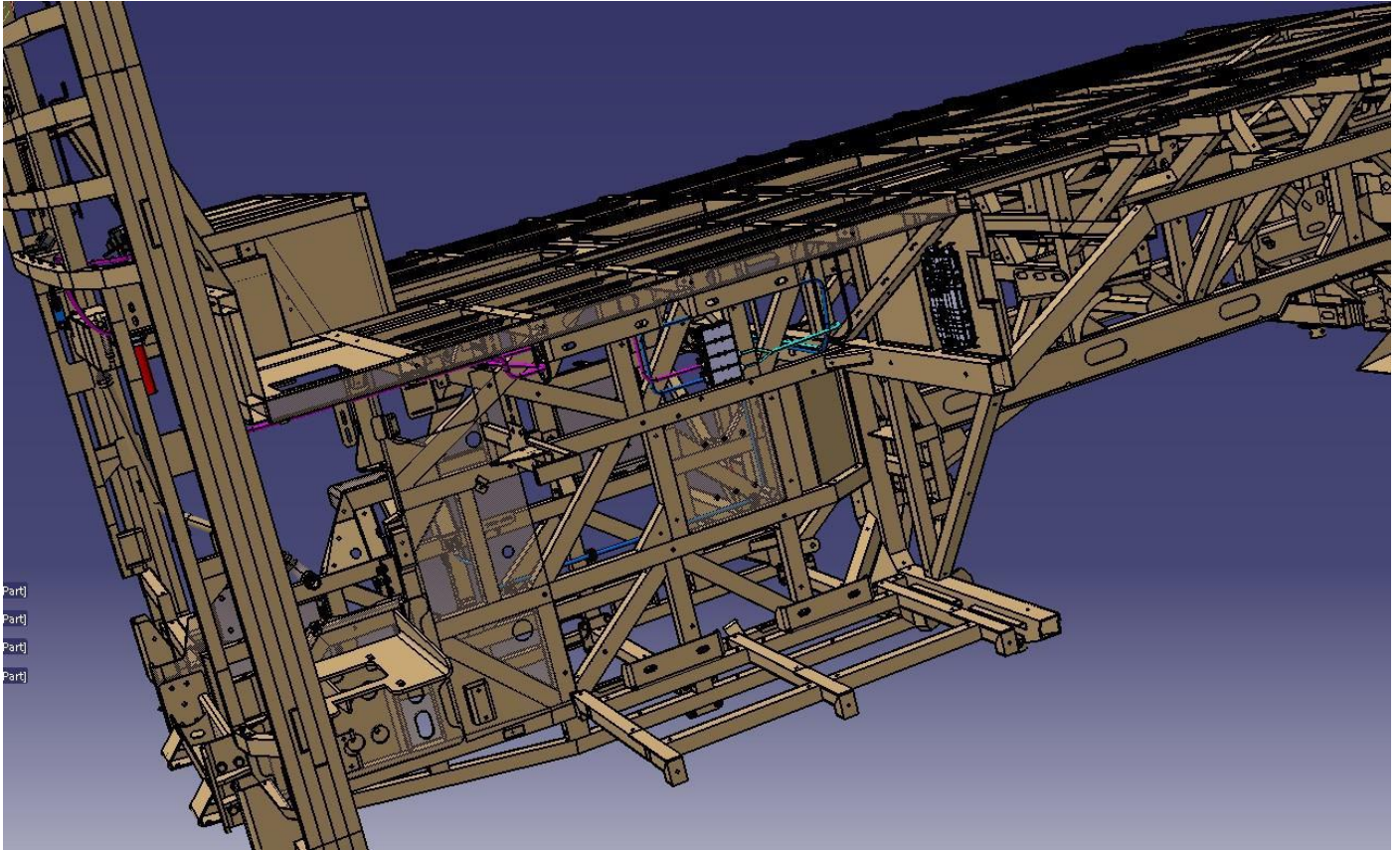


Figure-3.2-Revised Diagram for Figure 3.1

4-) Open the lid of lift compartment Locate the MUX5-B 2.1 Which is numbered as 06A037.



5.) Check the pin C21 on the P06A037-C socket on the rear relay panel. If there is no diode on this pin, you should add the diode that in the part list as **“Figure 4 ”**.

If there is a diode, then check the diode polarity and make sure that this is good and working properly. If this diode is damaged replace it.

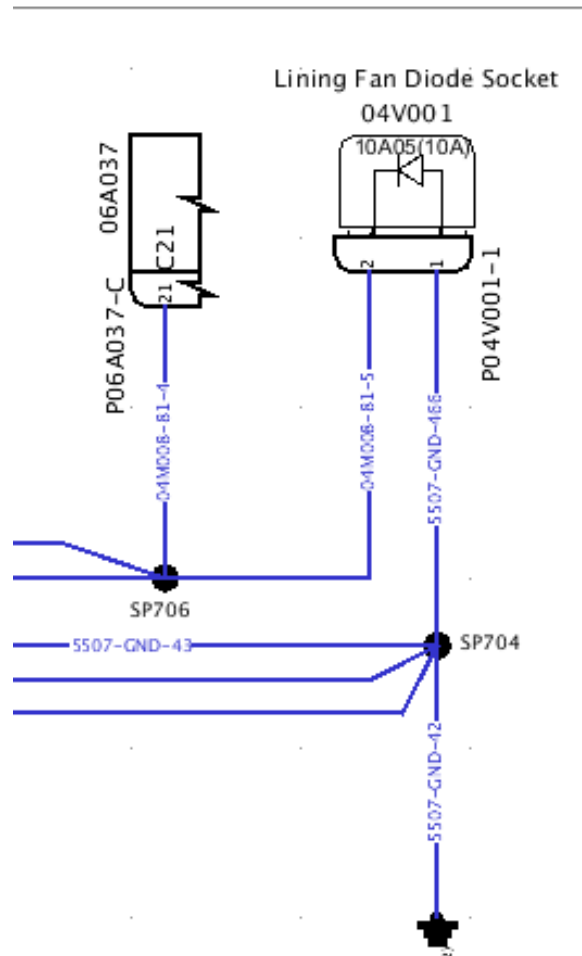
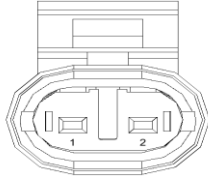


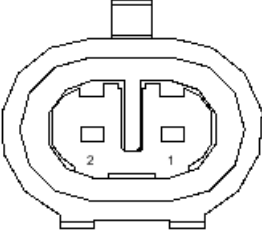




Figure-4-

INCLUDING PART LIST

PART NUMBER	PART DESCRIPTION	QTY	SYMBOL
9460-549	CONN-MALE-2 WAYS-SEALED	3	
9402-81Y	T-FEM-0,75-1,5 mm ²	6	
96200-6301-02Y	SEAL	6	
9431-22Y	DIODE, 10A10(10A)	3	
9460-554	CONN-FEMALE-2 WAYS-SEALED	3	
9402-190Y	T-MALE-1,5 – 2,5 mm ²	6	
9402-158Y	T-FEM-0,5-1,0 mm ²	1	
96210-6200-02Y	SEAL	6	

The program Links

ZR5 :

**** TS04-LC3-000** software should be installed on vehicles with software starting with **TS02-LC3-...**

<https://content.temsa.com/sapcs?get&pVersion=0045&contRep=ZADNSPEKTEP07101&docId=0050568F725E1FE087DCF91ED61D04BC&accessMode=r&compId=TS04-LC3-000.zip>

**** TS05-LC3-000** software should be installed on vehicles with software starting with **TS03-LC3-...**

<https://content.temsa.com/sapcs?get&pVersion=0045&contRep=ZADNSPEKTEP07101&docId=0050568F725E1FE087DCF0494DCAC4BC&accessMode=r&compId=TS05-LC3-000.zip>

Multiviu :

****TS02-MV-009** software should be installed on vehicles with software starting with **TS02-MV-...**

https://content.temsa.com/sapcs?get&pVersion=0045&contRep=ZADNSPEKTEP07101&docId=0050568F725E1EEFBFE8994B08D484B9&accessMode=r&compId=TS02_MV_009.L2P.zip

****If the vehicle has TS00-MV3-000 or later, you don't need to update Multiviu.**

Important Note:

-The software mentioned above are up to date software. If there is previously published bulletin for these vehicles, please refer to this bulletin and install these software.

-Before downloading the ZR5 software; you have to check, which program variant is installed on the vehicle. If **"TS02-LC3-..."** is installed then you should download **"TS04-LC3-000"**.

If **"TS03-LC3-..."** is installed then you should download **"TS05-LC3-000"**

-To download ZR5 Kibes software, your computer must have Logicad3.014.2

-To be online for option page on ZR5 software, you can connect 1000Kbaud rate

-Please note option selections before installing ZR5 software. If the options are reset, after installing, reselect the same options.

Uploading the up to date program(ZR5):

- 1- Park the vehicle to an area which is proper to work.

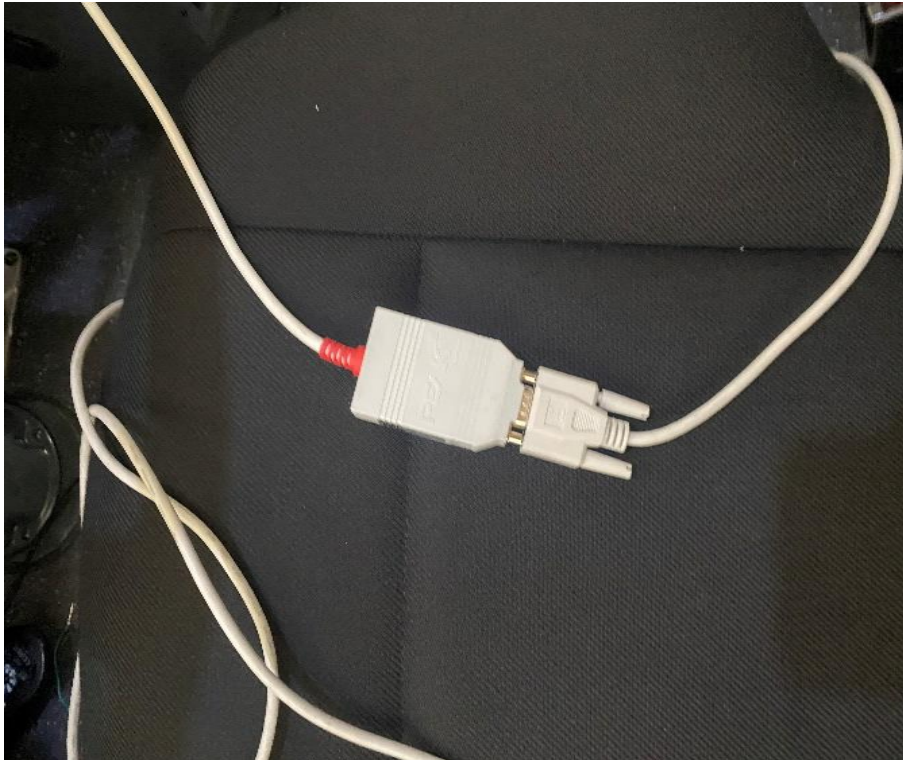


- 2- To install the ZR5 software, locate the KIBES socket next to the OBD socket by looking at the label on the cover.

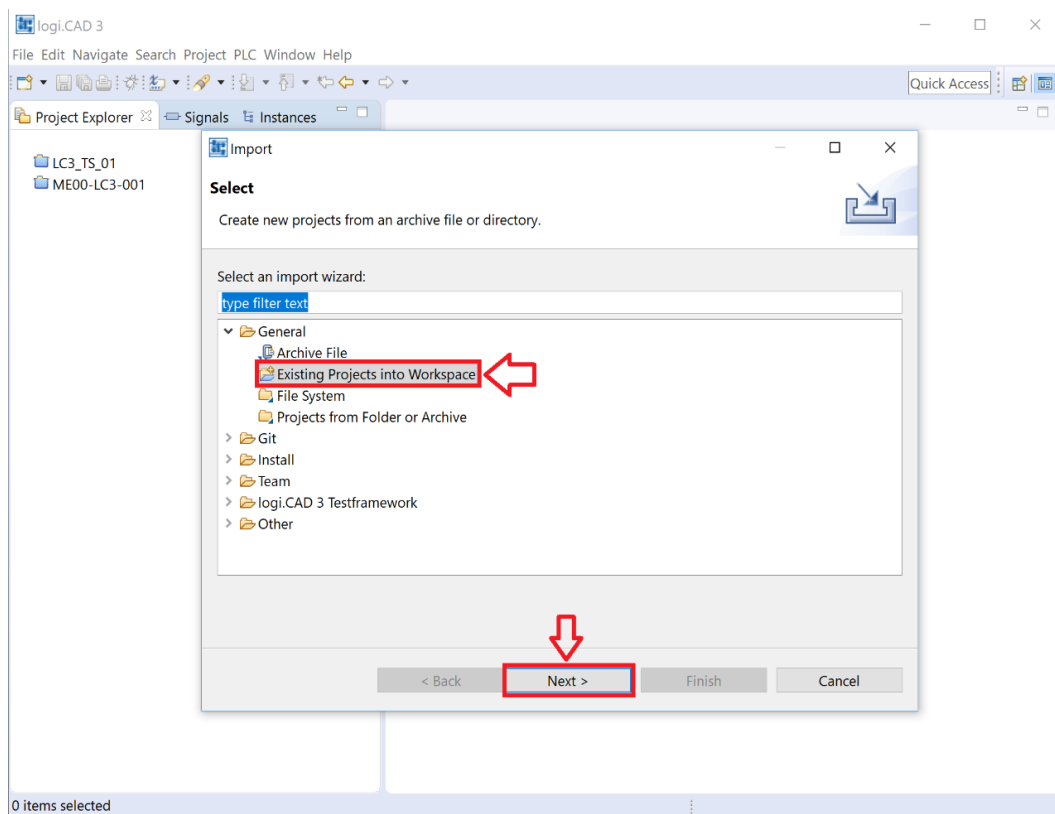
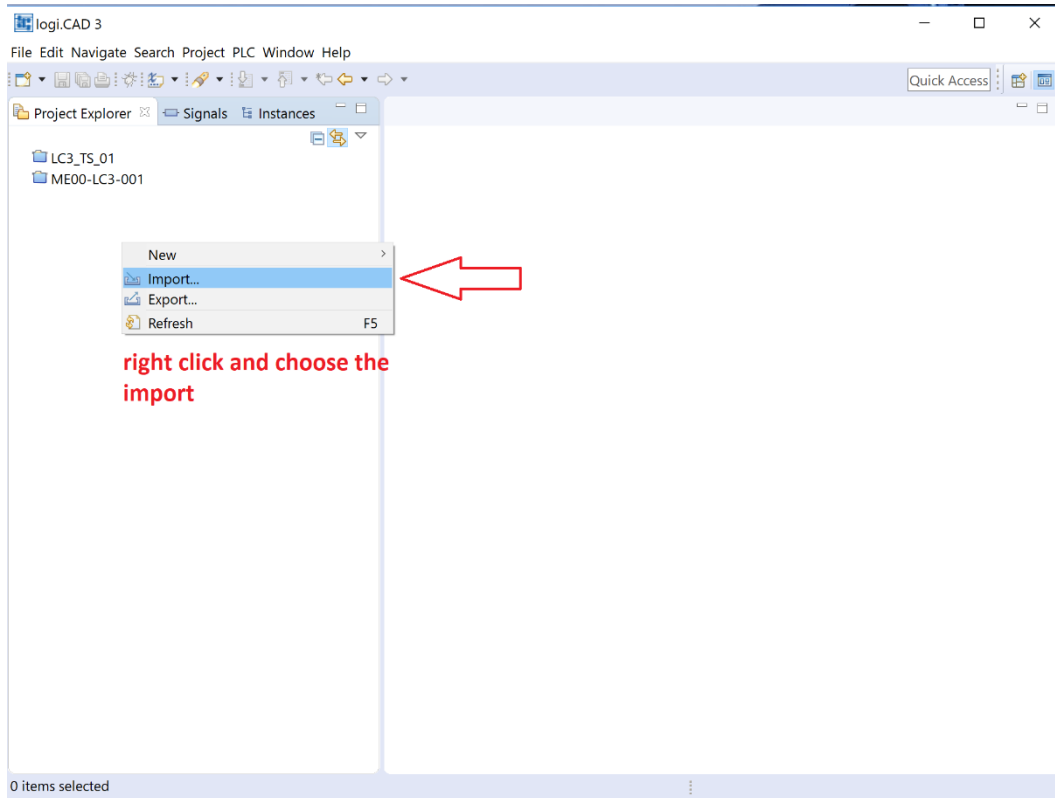


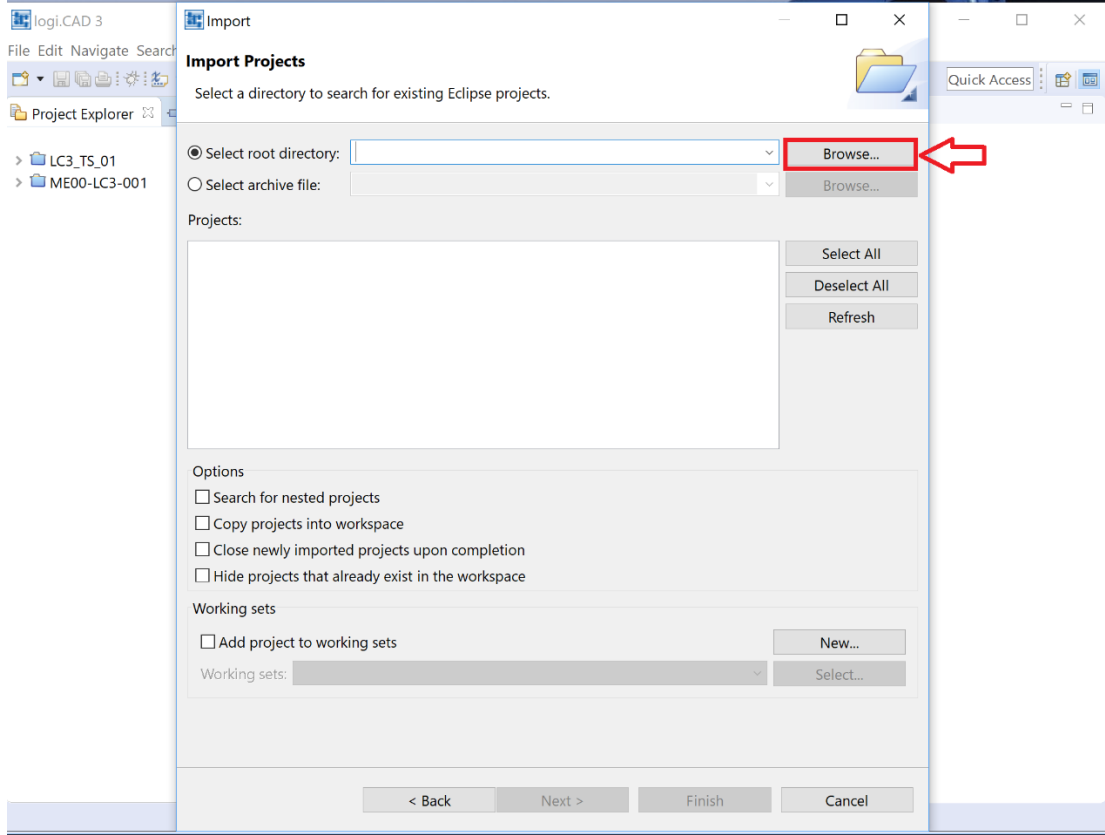
- 3- Connect one end of the KIBES cable to the CANalyzer or Peak cable and the other end to the KIBES diagnostic socket. Connect the CANalyzer or Peak output to the computer. Make sure that the KIBES dongle is inserted to your computer.



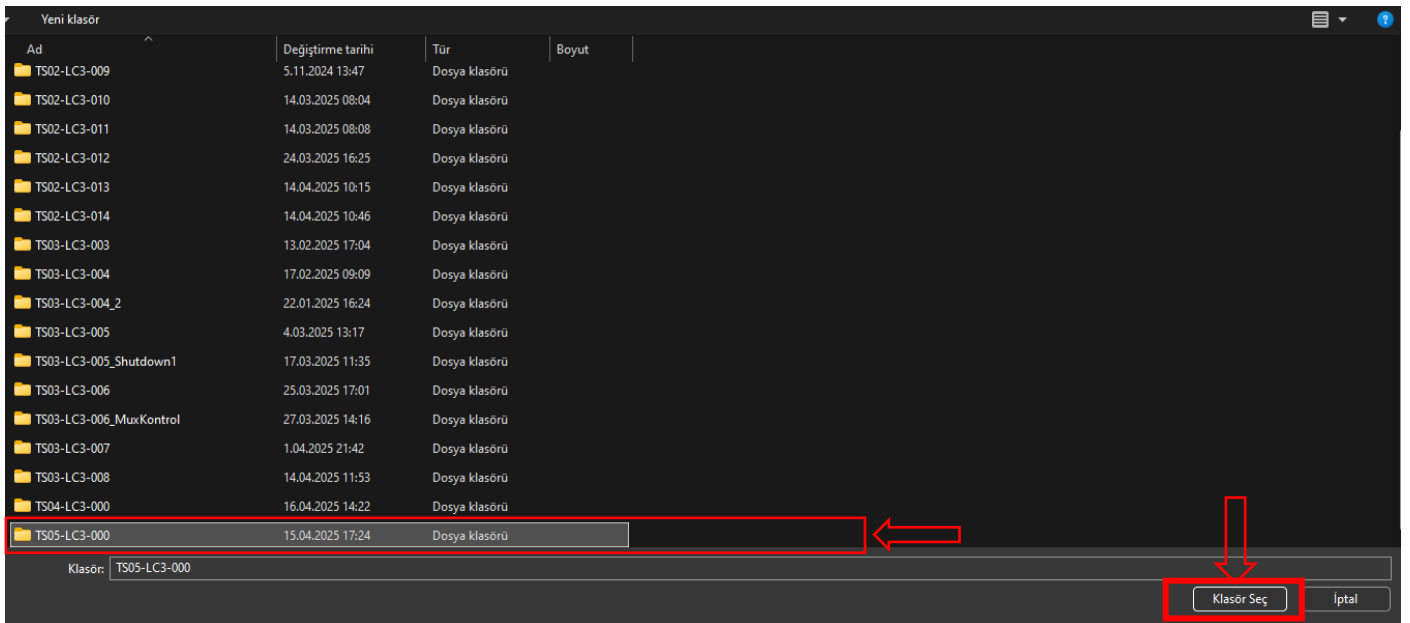


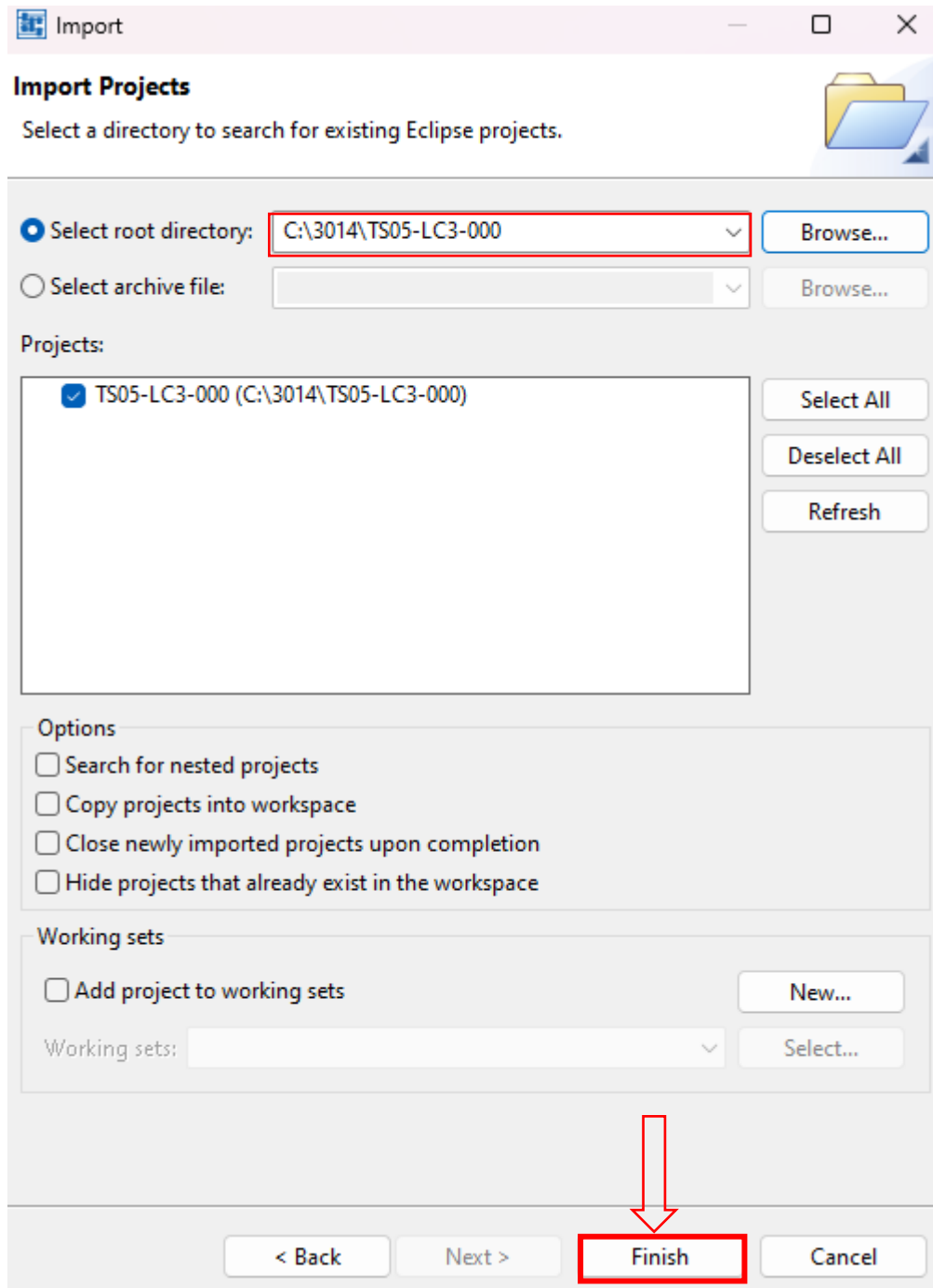
- 4- Install the ZR5 software on the vehicle as described in the images. Turn the ignition switch on. Do not start the engine.



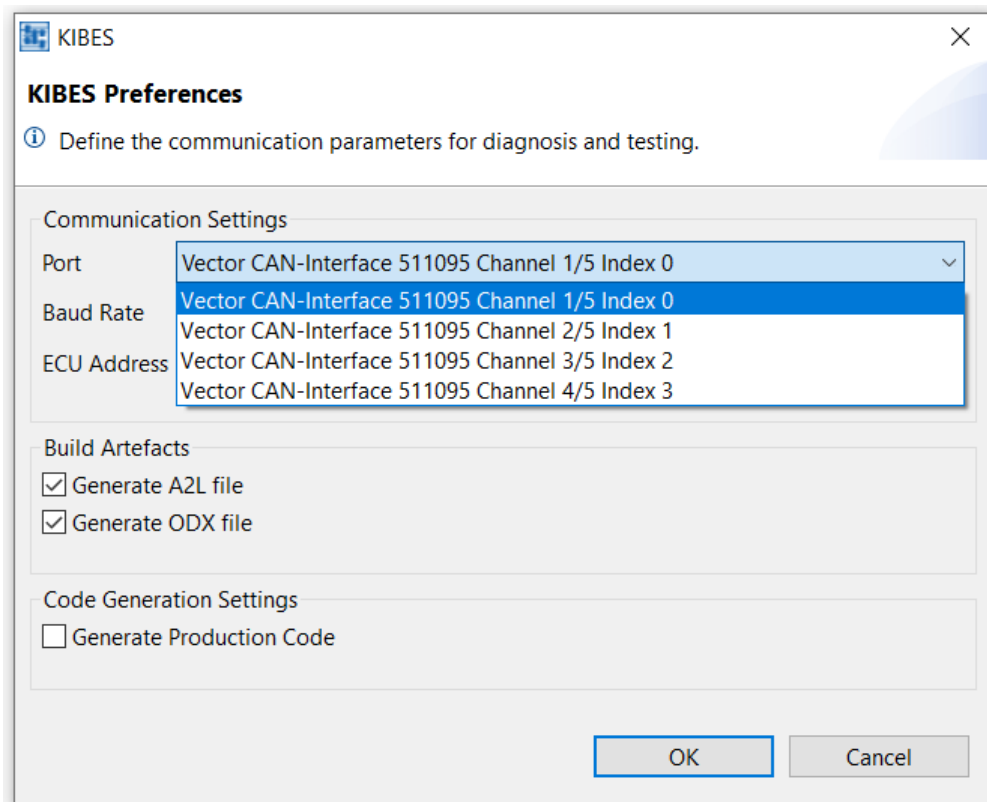
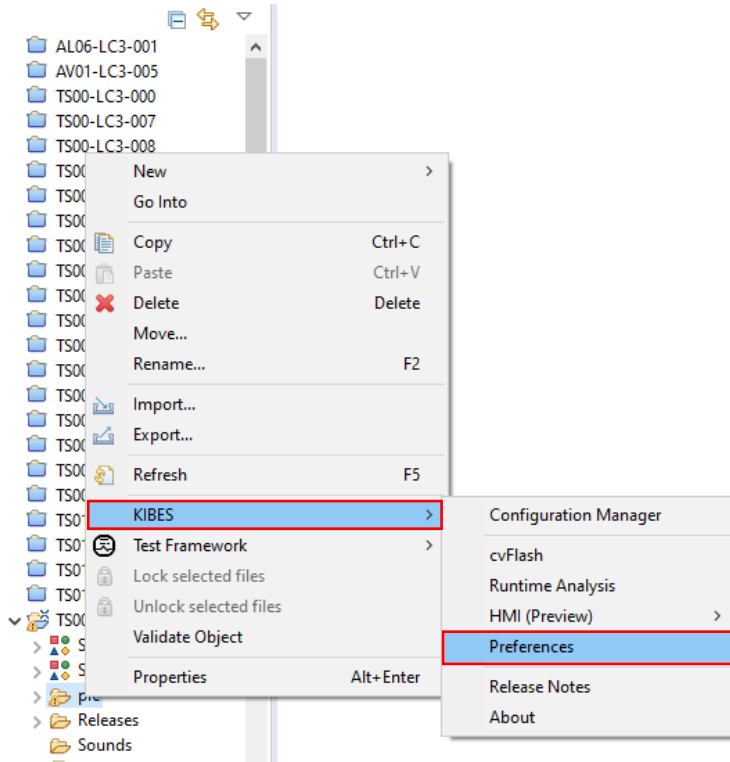


Hint: The software version must be selected correctly. The number shown in the picture may be representative.

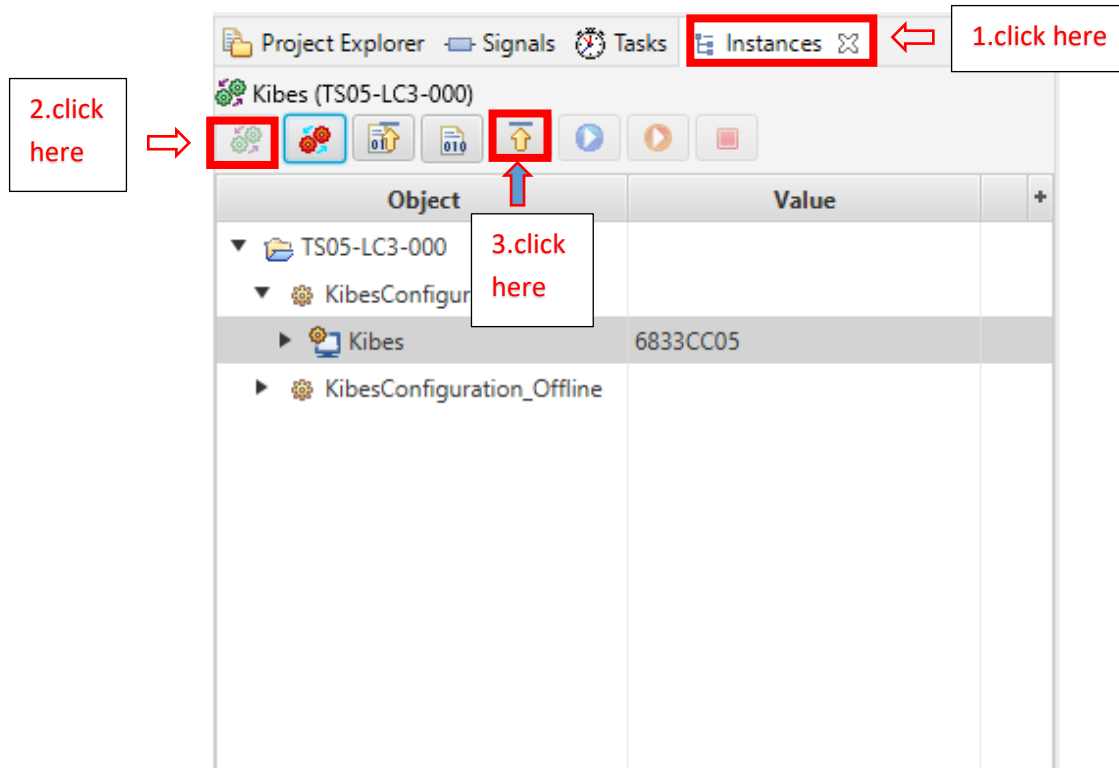




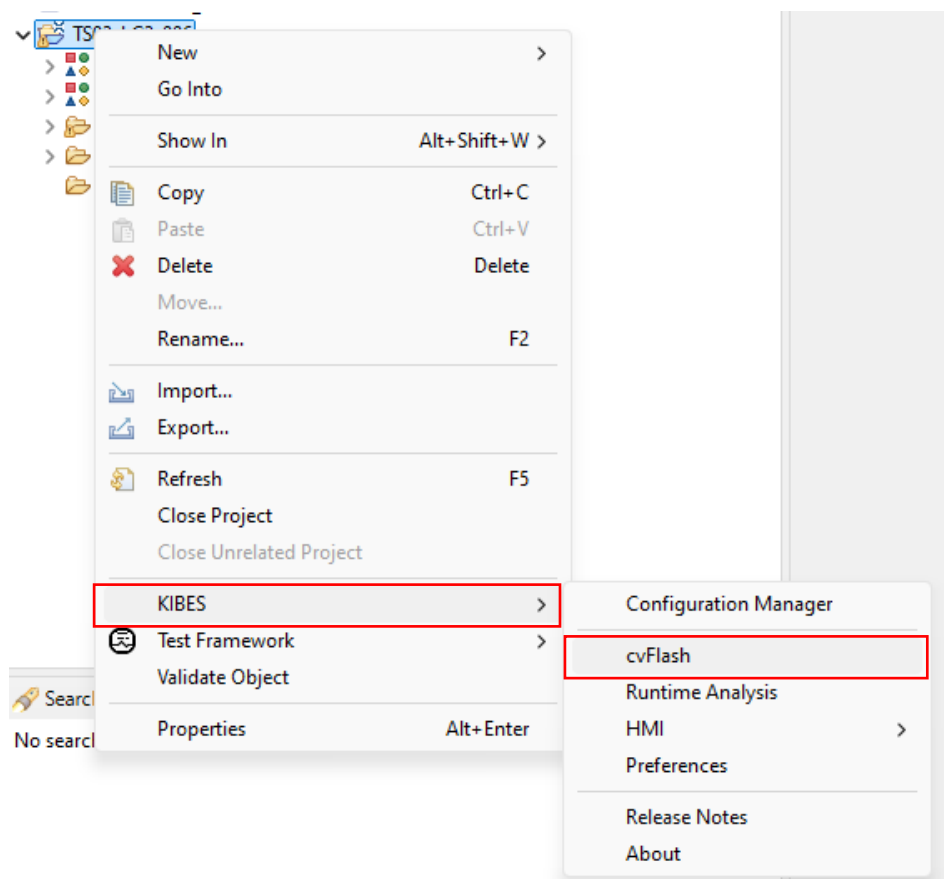
- Click "Preferences" to check the **Baudrate** and **port**. (for TS Coachs it is updated from 250k to 1000k)

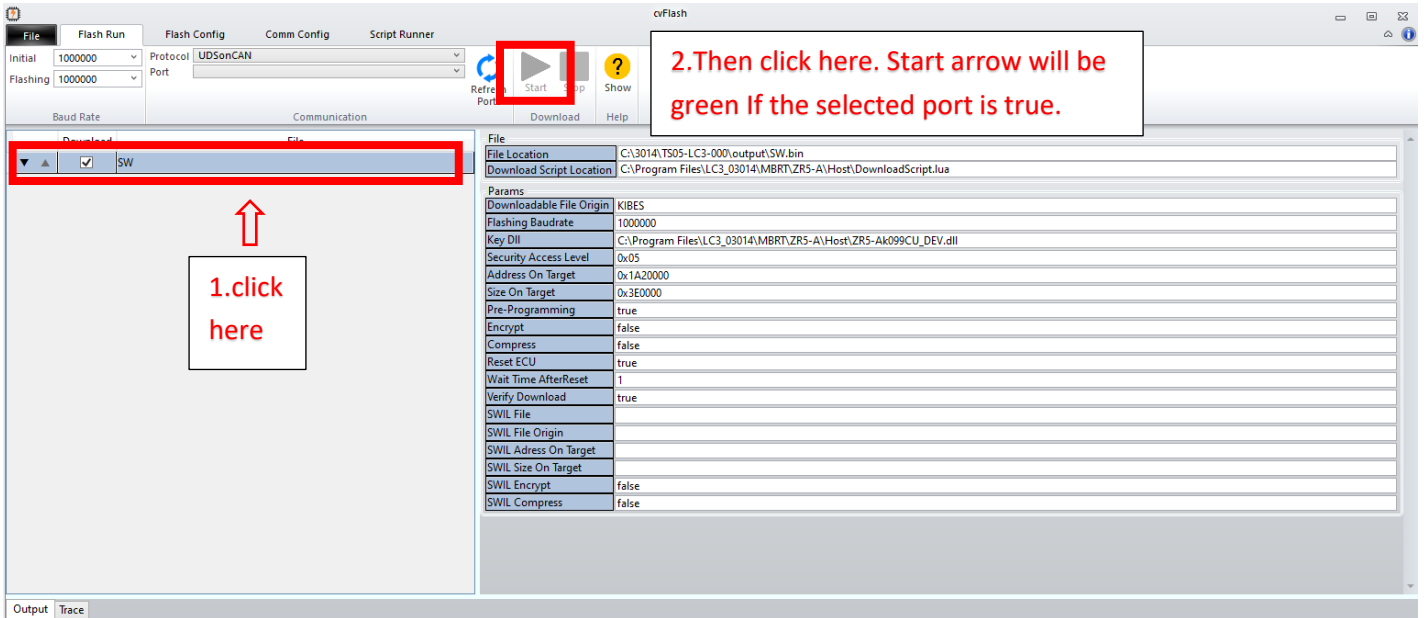


4.2- Click on the instructions shown in order in the picture.



4.3- If you get an error when you start loading of software, try CV flash download.





Uploading the up to date program (Multiviu):

1-Park the vehicle to an area which is proper to work.

2-Connect your computer to the vehicle by using the CANalyzer interface. Plug the USB part into your computer and connect your CAN cable to the 9 pinned OBD port with the **D** pin low and the **C** pin high.



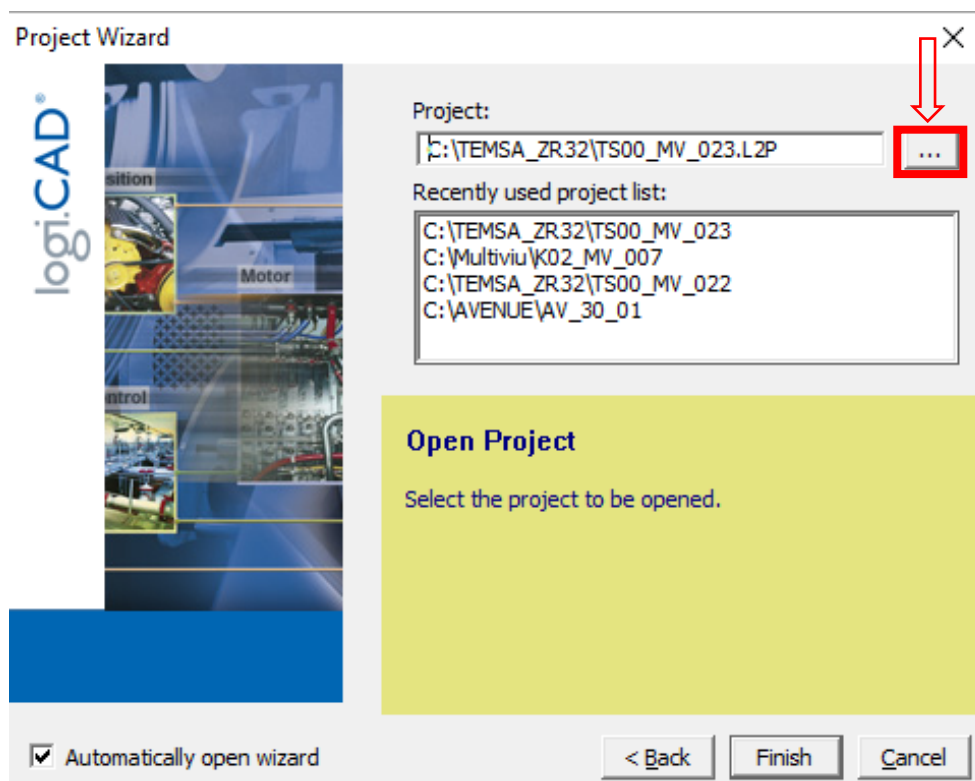
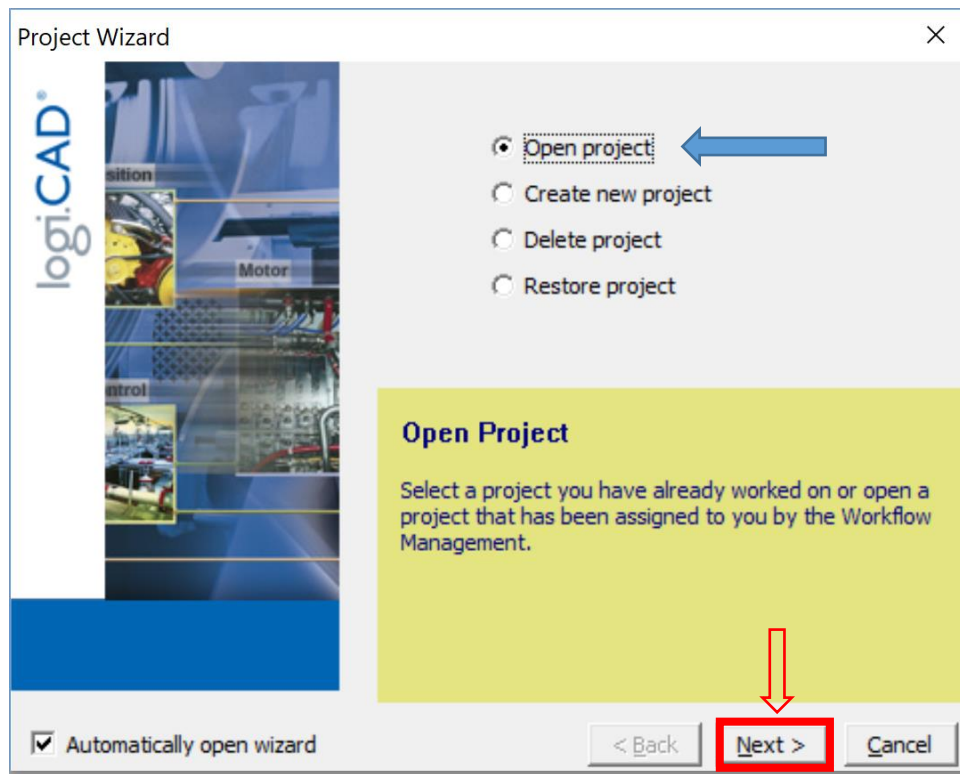


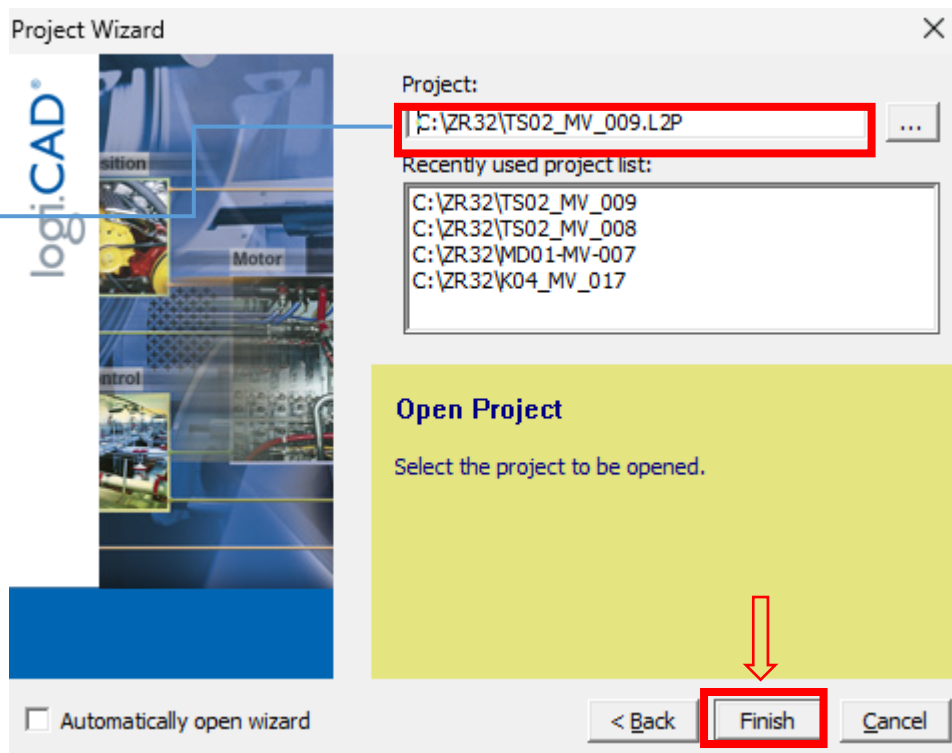
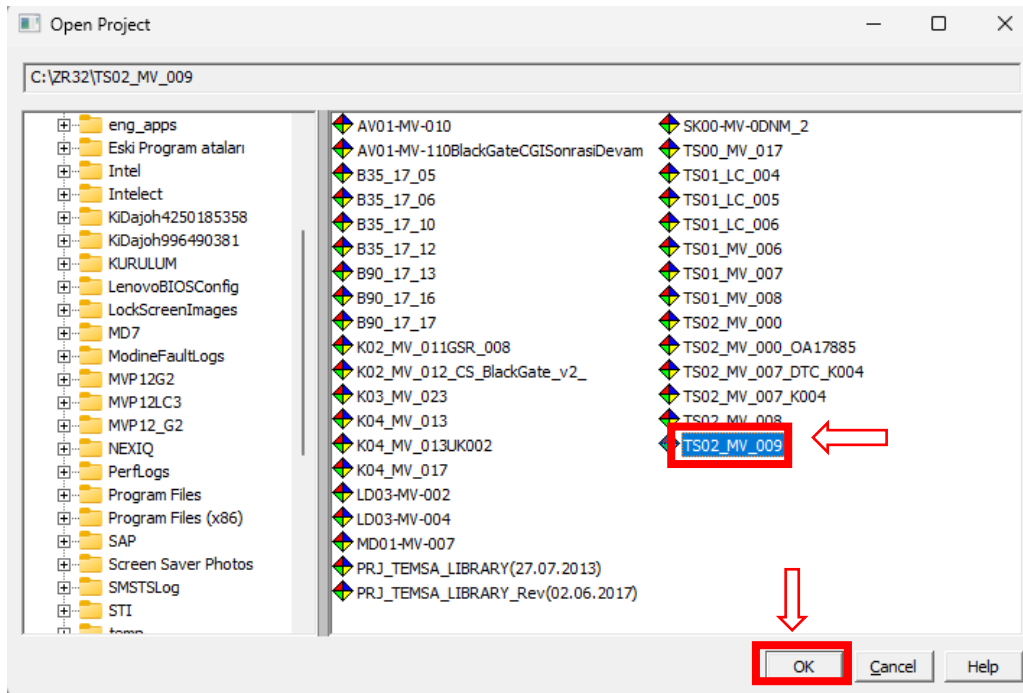
3- Turn the ignition switch on. Do not start the engine.

4- Make sure that the KIBES dongle is inserted to your computer.

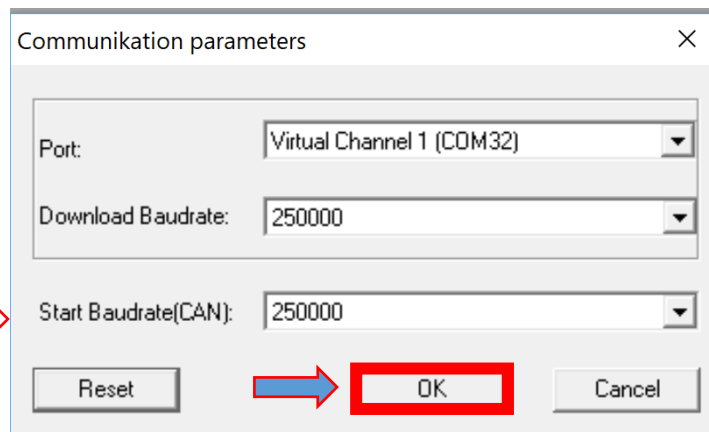
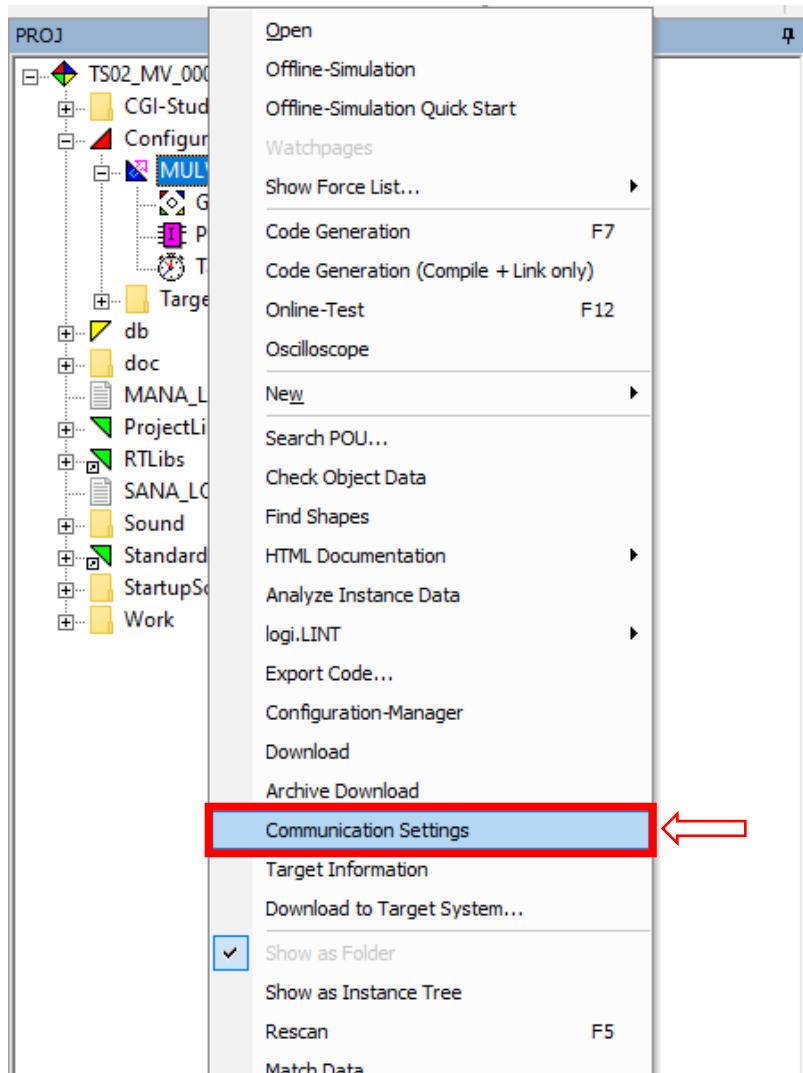


Select the "Open Project" selection and click "next".





6-Right click on Mulviu then click “Communication Settings” check the Port and Baudrate.

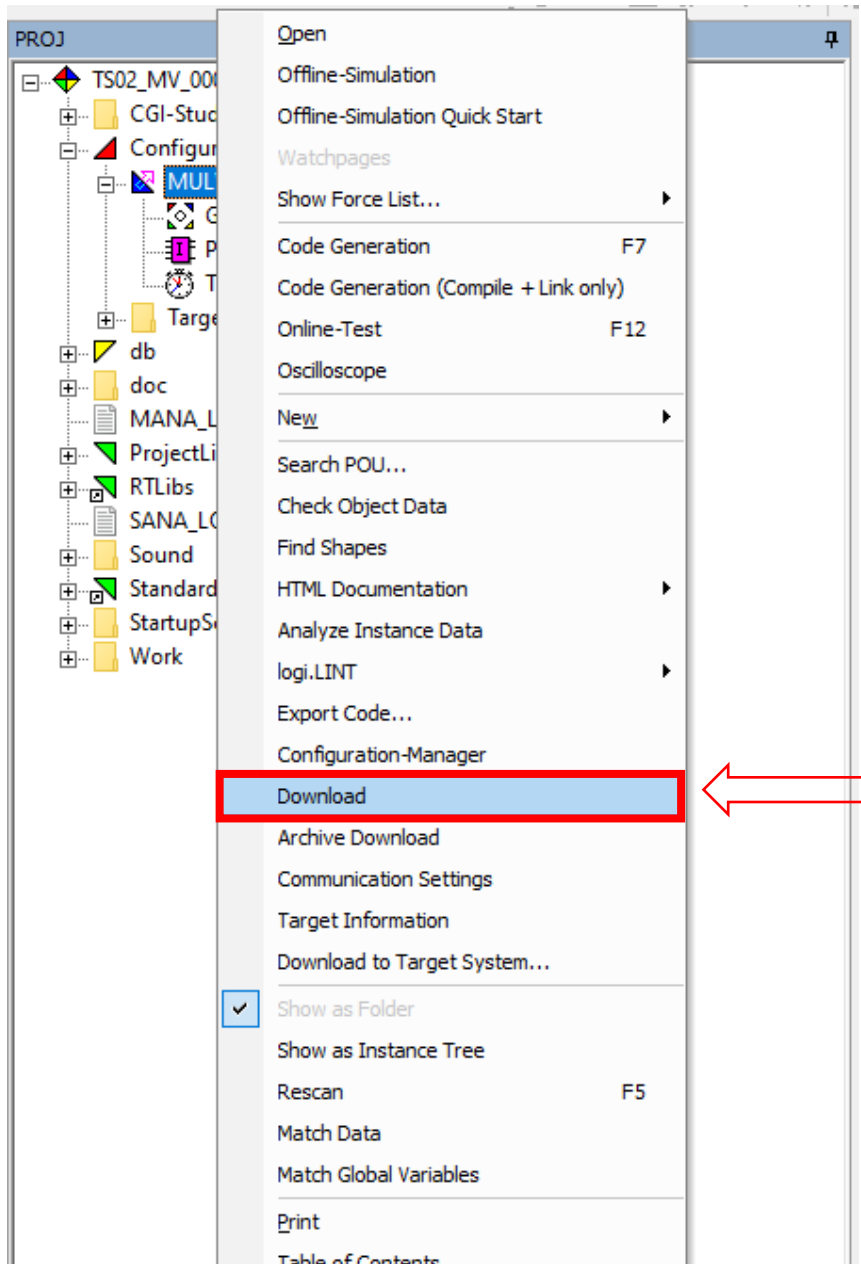


You can change “Start Baudrate” here

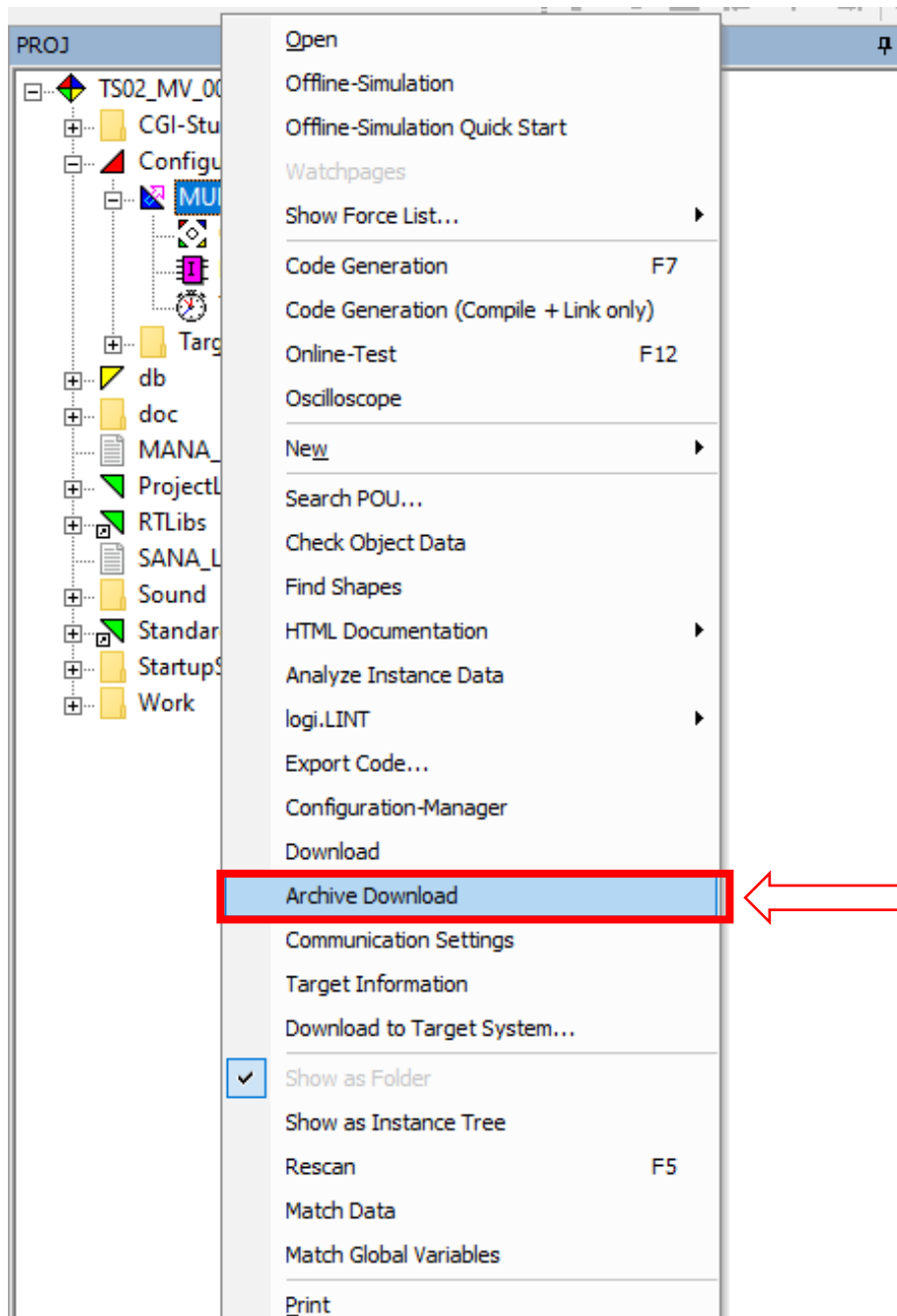
You can change port here. Please make sure correct port.

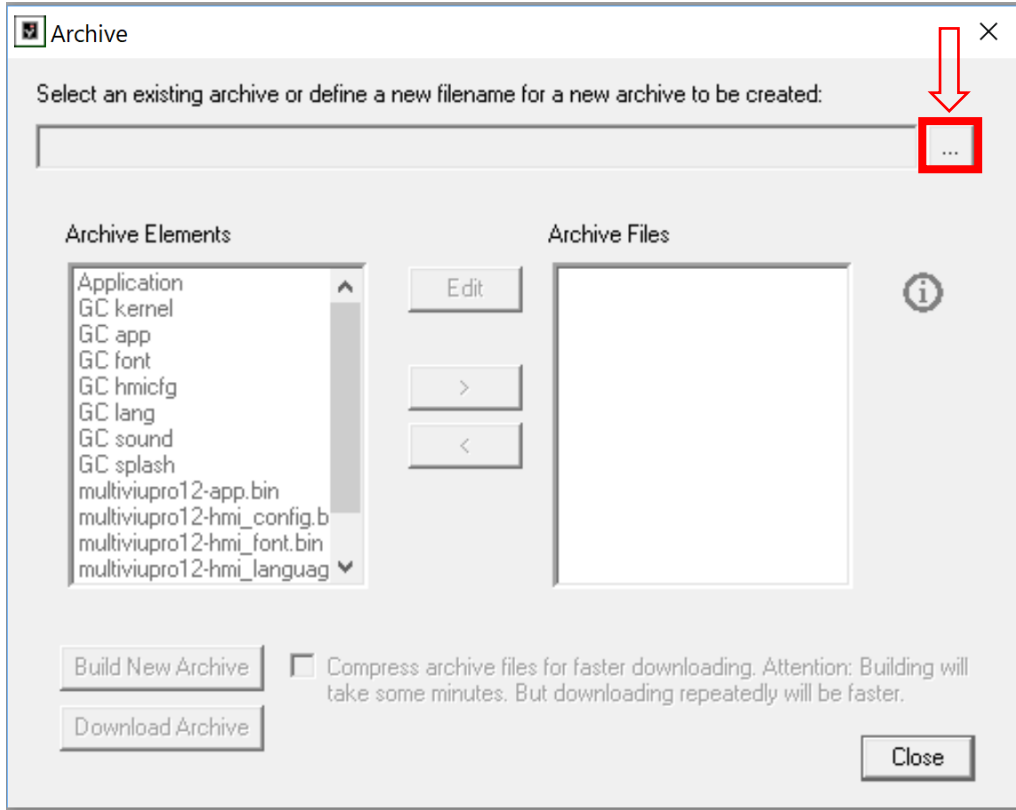
You can change “Download Baudrate” here

7-Then Right click on Mulviu, Download the logic side of the program.

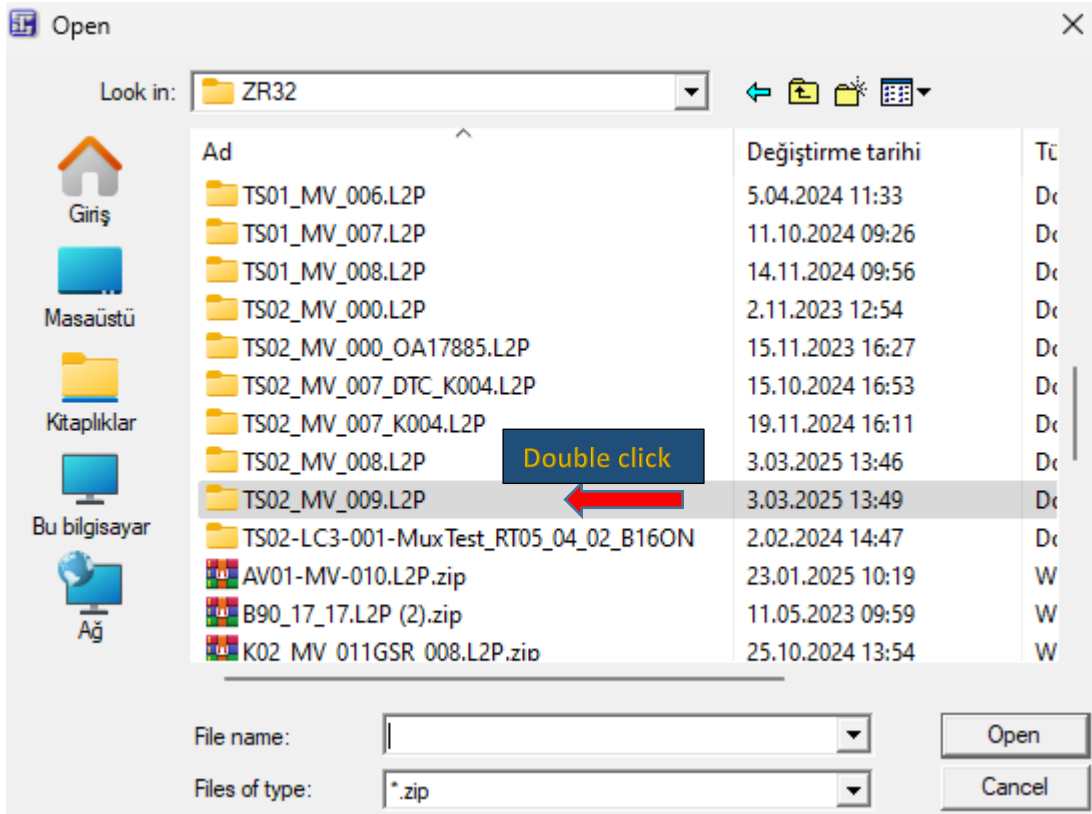


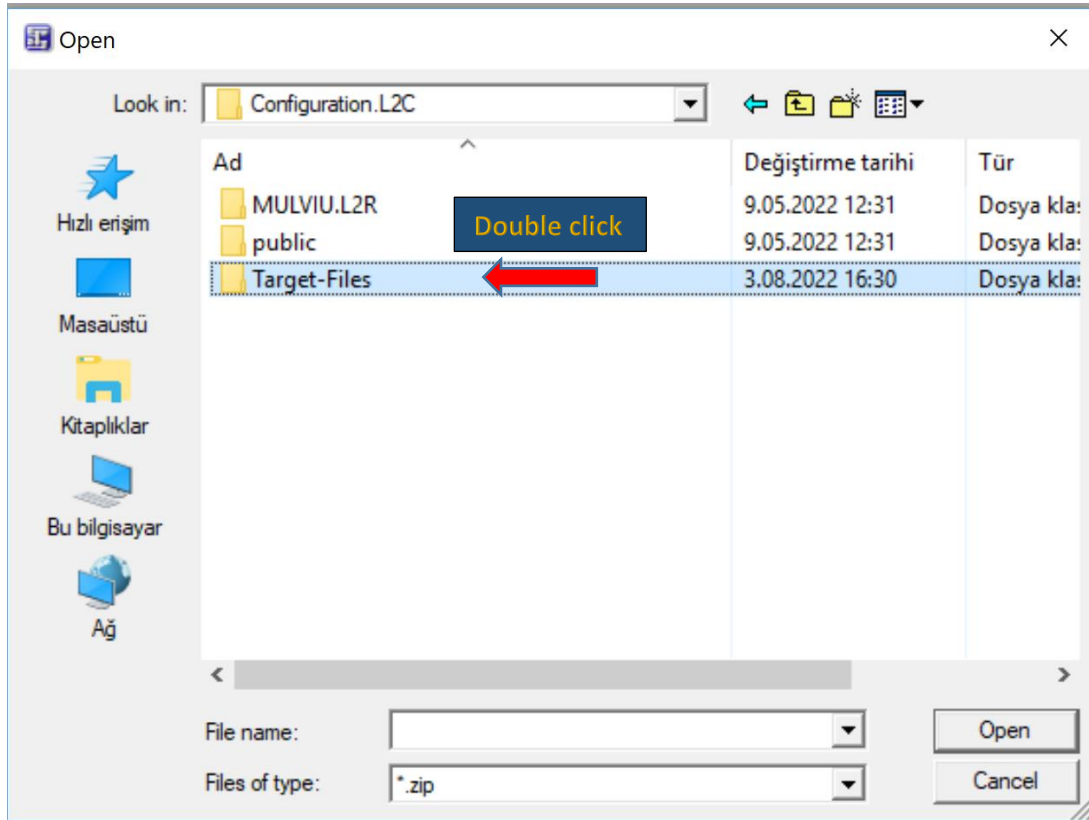
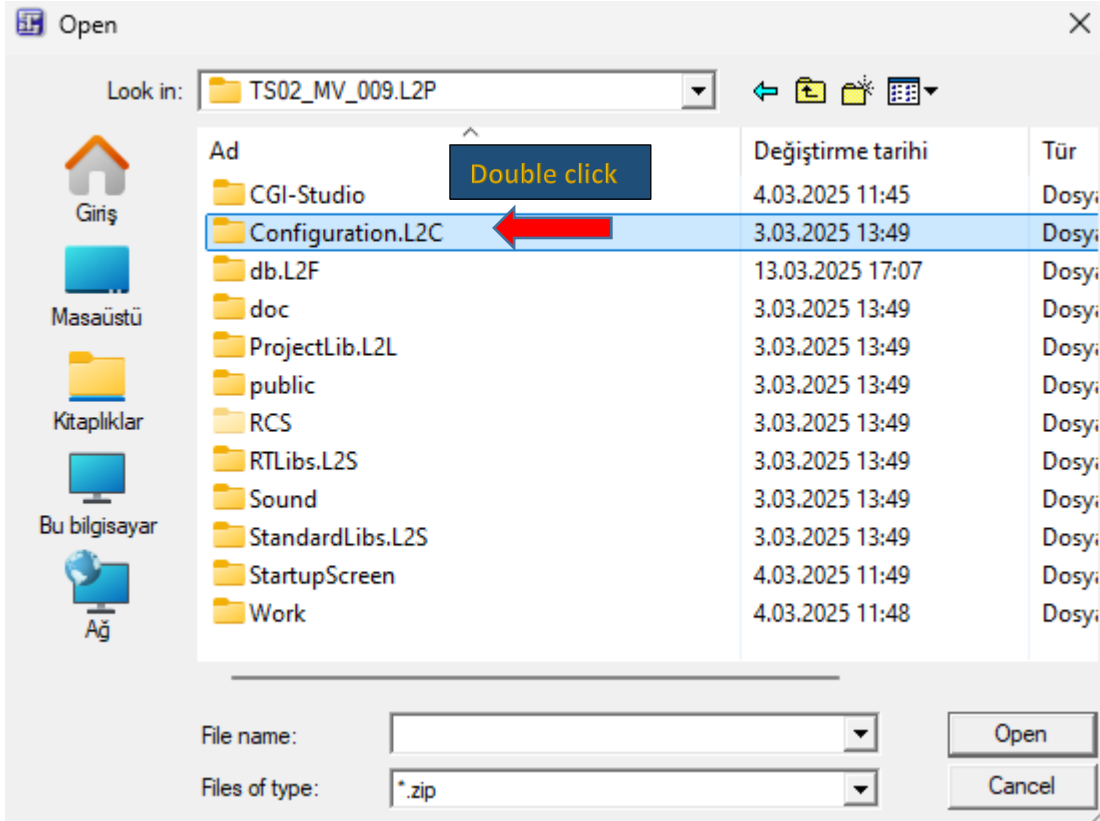
8-Right click on Mulviu again then click “Archive Download”



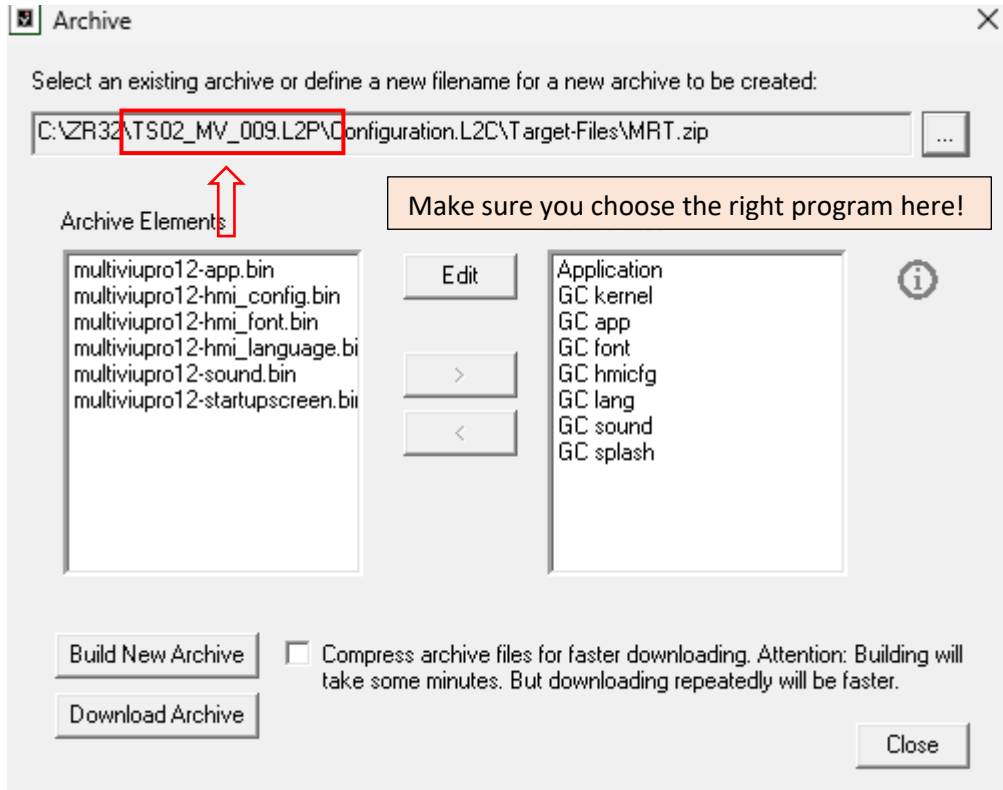
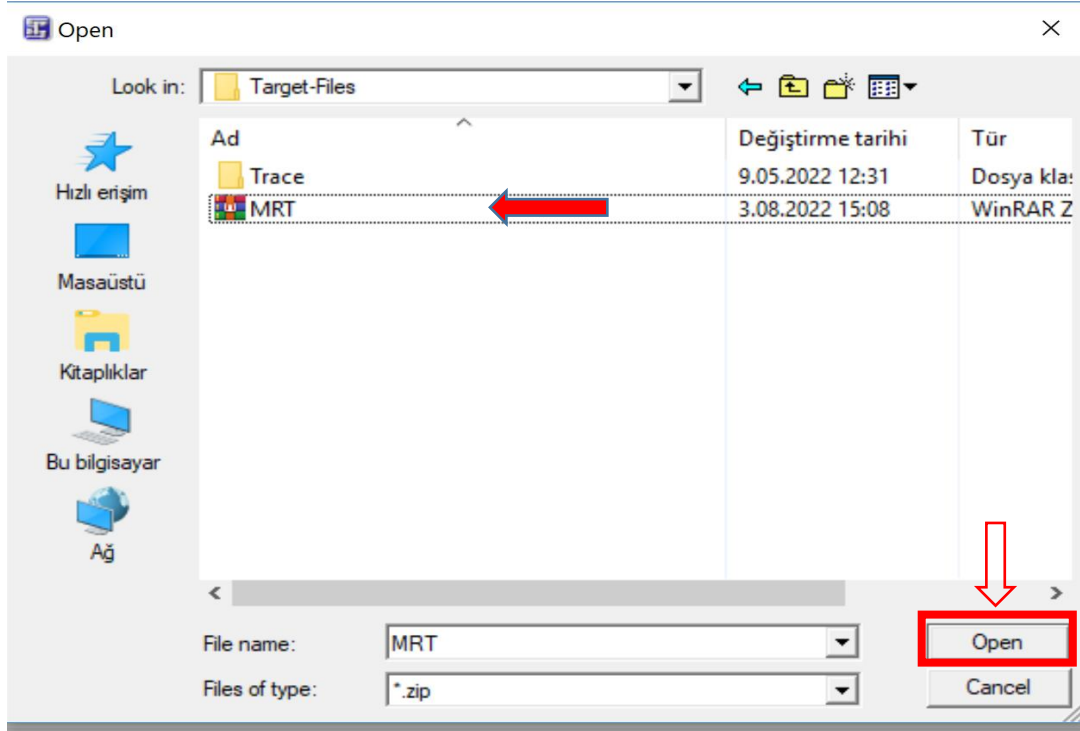


9- You should find program in your workspace then double click the program.

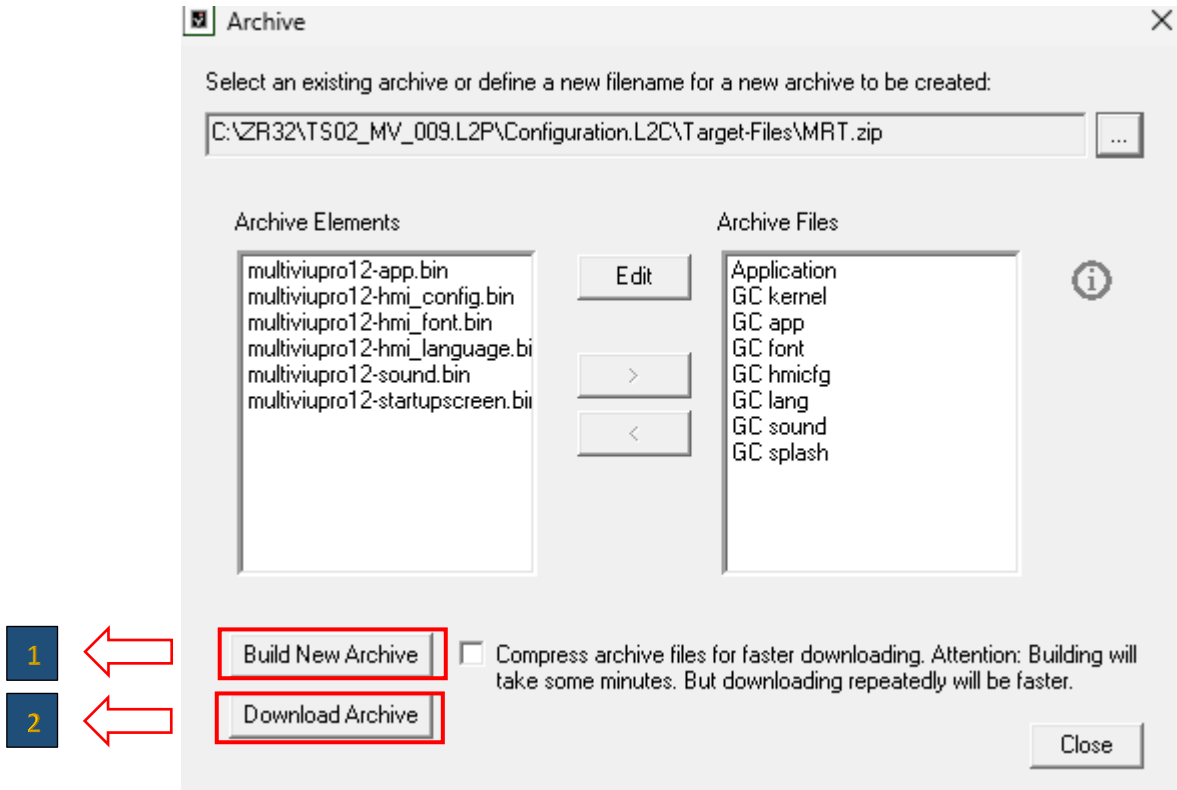




10- Click on "MRT" then click "Open".



11- After the software is checked, click the “Build New Archive”, then click the “Archive Download”.



12-When a warning occurs, click OK, then wait for the program to be downloaded. Do not cut the power off during the download process, this could cause the body controller to dysfunction.

LABOR BREAKDOWN

Application	Time
Removing Mux 1.1 B15, Checking or adding Flyback diode, Removing 3A diode	15'
Moving Mux 1.1 B16 pin to Mux 1.1 C3, checking or adding Flyback diode	10'
Changing pinout of RL30 on the 01A007 Fuse Box and removing diode	25'
Checking or adding Flyback diode for Mux 2.1 C21	10'
Installing ZR5 Kibes Program	5'
Installing Multiviu Program	5'
Archive Installing of Multiviu	40'
Total Labor Time	110'

No	Otpa No	Model	Chassis No	Country
1.	OA19326	TS45	NLTEJXB92T1000682	USA
2.	OA19308	TS45	NLTEJXB99T1000680	USA
3.	OA19307	TS45	NLTEJXB92T1000679	USA
4.	OA19244	TS45	NLTEJXB90T1000678	USA
5.	OA19243	TS45	NLTEJXB99T1000677	USA
6.	OA19242	TS45	NLTEJXB97T1000676	USA
7.	OA19241	TS45	NLTEJXB95T1000675	USA
8.	OA19240	TS45	NLTEJXB93T1000674	USA
9.	OA19231	TS45	NLTEJXB91T1000673	USA
10.	OA19107	TS45	NLTEJXB91S1000672	USA
11.	OA19106	TS45	NLTEJXB9XS1000671	USA
12.	OA19105	TS45	NLTEJXB98S1000670	USA
13.	OA19104	TS45	NLTEJXB91S1000669	USA
14.	OA19084	TS45	NLTEJXB9XS1000668	USA
15.	OA19083	TS45	NLTEJXB98S1000667	USA
16.	OA19082	TS45	NLTEJXB96S1000666	USA
17.	OA19081	TS45	NLTEJXB94S1000665	USA
18.	OA19063	TS45	NLTEJXB92S1000664	USA
19.	OA19029	TS45	NLTEJXB90S1000663	USA
20.	OA19028	TS45	NLTEJXB99S1000662	USA
21.	OA19027	TS45	NLTEJXB97S1000661	CANADA
22.	OA19016	TS45	NLTEJXB95S1000660	CANADA
23.	OA19015	TS45	NLTEJXB99S1000659	CANADA
24.	OA19014	TS45	NLTEJXB97S1000658	CANADA
25.	OA19013	TS45	NLTEJXB95S1000657	USA
26.	OA19012	TS45	NLTEJXB93S1000656	USA
27.	OA19011	TS45	NLTEJXB91S1000655	USA
28.	OA19010	TS45	NLTEJXB9XS1000654	USA
29.	OA19009	TS45	NLTEJXB98S1000653	USA
30.	OA19008	TS45	NLTEJXB96S1000652	USA
31.	OA19007	TS45	NLTEJXB94S1000651	USA
32.	OA19002	TS45	NLTEJXB92S1000650	USA
33.	OA19001	TS45	NLTEJXB96S1000649	USA
34.	OA18979	TS45	NLTEJXB94S1000648	USA
35.	OA18978	TS45	NLTEJXB92S1000647	USA
36.	OA18976	TS45	NLTEJXB99S1000645	USA
37.	OA18975	TS45	NLTEJXB97S1000644	USA
38.	OA18945	TS45	NLTEJXB95S1000643	USA
39.	OA18944	TS45	NLTEJXB93S1000642	USA
40.	OA18943	TS45	NLTEJXB91S1000641	USA
41.	OA18942	TS45	NLTEJXB9XS1000640	USA
42.	OA18906	TS45	NLTEJXB93S1000639	USA
43.	OA18905	TS45	NLTEJXB91S1000638	USA

No	Otpa No	Model	Chassis No	Country
44.	OA18904	TS45	NLTEJXB9XS1000637	USA
45.	OA18903	TS45	NLTEJXB98S1000636	USA
46.	OA18902	TS45	NLTEJXB96S1000635	USA
47.	OA18901	TS45	NLTEJXB94S1000634	USA
48.	OA18900	TS45	NLTEJXB92S1000633	USA
49.	OA18899	TS45	NLTEJXB90S1000632	USA
50.	OA18898	TS45	NLTEJXB99S1000631	USA
51.	OA18897	TS45	NLTEJXB97S1000630	USA
52.	OA18896	TS45	NLTEJXB90S1000629	USA
53.	OA18895	TS45	NLTEJXB99S1000628	USA
54.	OA18870	TS45	NLTEJXB97S1000627	USA
55.	OA18869	TS45	NLTEJXB95S1000626	USA
56.	OA18868	TS45	NLTEJXB93S1000625	USA
57.	OA18867	TS45	NLTEJXB91S1000624	USA
58.	OA18833	TS45	NLTEJXB9XS1000623	CANADA
59.	OA18832	TS45	NLTEJXB98S1000622	CANADA
60.	OA18831	TS45	NLTEJXB96S1000621	USA
61.	OA18830	TS45	NLTEJXB94S1000620	CANADA
62.	OA18829	TS45	NLTEJXB98S1000619	USA
63.	OA18828	TS45	NLTEJXB96S1000618	CANADA
64.	OA18827	TS45	NLTEJXB94S1000617	USA
65.	OA18826	TS45	NLTEJXB92S1000616	USA
66.	OA18825	TS45	NLTEJXB90S1000615	USA
67.	OA18824	TS45	NLTEJXB99S1000614	USA
68.	OA18823	TS45	NLTEJXB97S1000613	USA
69.	OA18793	TS45	NLTEJXB95S1000612	USA
70.	OA18792	TS45	NLTEJXB93S1000611	USA
71.	OA18791	TS45	NLTEJXB91S1000610	USA
72.	OA18790	TS45	NLTEJXB95S1000609	USA
73.	OA18757	TS45	NLTEJXB93S1000608	USA
74.	OA18756	TS45	NLTEJXB91S1000607	USA
75.	OA18755	TS45	NLTEJXB9XS1000606	USA
76.	OA18754	TS45	NLTEJXB98S1000605	USA
77.	OA18753	TS45	NLTEJXB96S1000604	USA
78.	OA18737	TS45	NLTEJXB94S1000603	USA
79.	OA18736	TS45	NLTEJXB92S1000602	USA
80.	OA18735	TS45	NLTEJXB90S1000601	USA
81.	OA18734	TS45	NLTEJXB99S1000600	USA
82.	OA18720	TS45	NLTEJXB96S1000599	USA
83.	OA18719	TS45	NLTEJXB94S1000598	USA
84.	OA18718	TS45	NLTEJXB92S1000597	USA
85.	OA18717	TS45	NLTEJXB90S1000596	USA
86.	OA18701	TS45	NLTEJXB99S1000595	USA

No	Otpa No	Model	Chassis No	Country
87.	OA18700	TS45	NLTEJXB97S1000594	USA
88.	OA18699	TS45	NLTEJXB95S1000593	USA
89.	OA18698	TS45	NLTEJXB93S1000592	USA
90.	OA18697	TS45	NLTEJXB91S1000591	USA
91.	OA18672	TS45	NLTEJXB9XS1000590	USA
92.	OA18671	TS45	NLTEJXB93S1000589	USA
93.	OA18670	TS45	NLTEJXB91S1000588	USA
94.	OA18669	TS45	NLTEJXB9XS1000587	USA
95.	OA18668	TS45	NLTEJXB98S1000586	USA
96.	OA18667	TS45	NLTEJXB96S1000585	USA
97.	OA18643	TS45	NLTEJXB94S1000584	USA
98.	OA18642	TS45	NLTEJXB92S1000583	USA
99.	OA18641	TS45	NLTEJXB90S1000582	USA
100.	OA18640	TS45	NLTEJXB99S1000581	USA
101.	OA18618	TS45	NLTEJXB97S1000580	USA
102.	OA18617	TS45	NLTEJXB90S1000579	USA
103.	OA18616	TS45	NLTEJXB99S1000578	USA
104.	OA18615	TS45	NLTEJXB97S1000577	USA
105.	OA18614	TS45	NLTEJXB95S1000576	USA
106.	OA18613	TS45	NLTEJXB93S1000575	USA
107.	OA18612	TS45	NLTEJXB91S1000574	USA
108.	OA18588	TS45	NLTEJXB9XS1000573	USA
109.	OA18587	TS45	NLTEJXB98S1000572	USA
110.	OA18586	TS45	NLTEJXB96S1000571	USA
111.	OA18585	TS45	NLTEJXB94S1000570	USA
112.	OA18584	TS45	NLTEJXB98S1000569	USA
113.	OA18559	TS45	NLTEJXB96S1000568	USA
114.	OA18558	TS45	NLTEJXB94S1000567	USA
115.	OA18557	TS45	NLTEJXB92S1000566	USA
116.	OA18513	TS45	NLTEJXB90S1000565	USA
117.	OA18512	TS45	NLTEJXB99S1000564	USA
118.	OA18511	TS45	NLTEJXB97S1000563	USA
119.	OA18501	TS45	NLTEJXB95S1000562	USA
120.	OA18500	TS45	NLTEJXB93S1000561	USA
121.	OA18499	TS45	NLTEJXB91S1000560	USA
122.	OA18479	TS45	NLTEJXB95S1000559	USA
123.	OA18478	TS45	NLTEJXB93S1000558	USA
124.	OA18477	TS45	NLTEJXB91S1000557	USA
125.	OA18476	TS45	NLTEJXB9XS1000556	USA
126.	OA18475	TS45	NLTEJXB98S1000555	USA
127.	OA18467	TS45	NLTEJXB96S1000554	USA
128.	OA18466	TS45	NLTEJXB94S1000553	USA
129.	OA18465	TS45	NLTEJXB92S1000552	USA

No	Otpa No	Model	Chassis No	Country
130.	OA18464	TS45	NLTEJXB90S1000551	USA
131.	OA18463	TS45	NLTEJXB99S1000550	USA
132.	OA18462	TS45	NLTEJXB92S1000549	USA
133.	OA18461	TS45	NLTEJXB90S1000548	USA
134.	OA18439	TS45	NLTEJXB99S1000547	USA
135.	OA18438	TS45	NLTEJXB97S1000546	USA
136.	OA18437	TS45	NLTEJXB95S1000545	USA
137.	OA18436	TS45	NLTEJXB93S1000544	USA
138.	OA18435	TS45	NLTEJXB91S1000543	USA
139.	OA18434	TS45	NLTEJXB9XS1000542	USA
140.	OA18433	TS45	NLTEJXB98S1000541	USA
141.	OA18394	TS45	NLTEJXA91R1000540	USA
142.	OA18371	TS45	NLTEJXA95R1000539	USA
143.	OA18370	TS45	NLTEJXA93R1000538	USA
144.	OA18369	TS45	NLTEJXA91R1000537	USA
145.	OA18368	TS45	NLTEJXA9XR1000536	USA
146.	OA18367	TS45	NLTEJXA98R1000535	USA
147.	OA18366	TS45	NLTEJXA96R1000534	USA
148.	OA18365	TS45	NLTEJXA94R1000533	USA
149.	OA18364	TS45	NLTEJXA92R1000532	USA
150.	OA18349	TS45	NLTEJXA90R1000531	USA
151.	OA18295	TS45	NLTEJXA99R1000530	USA
152.	OA18294	TS45	NLTEJXA92R1000529	USA
153.	OA18293	TS45	NLTEJXA90R1000528	USA
154.	OA18272	TS45	NLTEJXA99R1000527	USA
155.	OA18271	TS45	NLTEJXA97R1000526	USA
156.	OA18270	TS45	NLTEJXA95R1000525	USA
157.	OA18258	TS45	NLTEJXA93R1000524	USA
158.	OA18257	TS45	NLTEJXA91R1000523	USA
159.	OA18256	TS45	NLTEJXA9XR1000522	USA
160.	OA18255	TS45	NLTEJXA98R1000521	USA
161.	OA18254	TS45	NLTEJXA96R1000520	USA
162.	OA18229	TS45	NLTEJXA9XR1000519	USA
163.	OA18228	TS45	NLTEJXA98R1000518	USA
164.	OA18227	TS45	NLTEJXA96R1000517	USA
165.	OA18204	TS45	NLTEJXA94R1000516	USA
166.	OA18203	TS45	NLTEJXA92R1000515	USA
167.	OA18202	TS45	NLTEJXA90R1000514	USA
168.	OA18201	TS45	NLTEJXA99R1000513	USA
169.	OA18200	TS45	NLTEJXA97R1000512	USA
170.	OA18199	TS45	NLTEJXA95R1000511	USA
171.	OA18198	TS45	NLTEJXA93R1000510	USA
172.	OA18197	TS45	NLTEJXA97R1000509	USA

No	Otpa No	Model	Chassis No	Country
173.	OA18196	TS45	NLTEJXA95R1000508	USA
174.	OA18195	TS45	NLTEJXA93R1000507	USA
175.	OA18164	TS45	NLTEJXA91R1000506	USA
176.	OA18163	TS45	NLTEJXA9XR1000505	USA
177.	OA18162	TS45	NLTEJXA98R1000504	USA
178.	OA18161	TS45	NLTEJXA96R1000503	USA
179.	OA18160	TS45	NLTEJXA94R1000502	USA
180.	OA18159	TS45	NLTEJXA92R1000501	USA
181.	OA18158	TS45	NLTEJXA90R1000500	USA
182.	OA18157	TS45	NLTEJXA98R1000499	USA
183.	OA18156	TS45	NLTEJXA96R1000498	USA
184.	OA18155	TS45	NLTEJXA94R1000497	USA
185.	OA18154	TS45	NLTEJXA92R1000496	USA
186.	OA18141	TS45	NLTEJXA90R1000495	USA
187.	OA18140	TS45	NLTEJXA99R1000494	USA
188.	OA18139	TS45	NLTEJXA97R1000493	USA
189.	OA18138	TS45	NLTEJXA95R1000492	USA
190.	OA18137	TS45	NLTEJXA93R1000491	USA
191.	OA18098	TS45	NLTEJXA91R1000490	USA
192.	OA18097	TS45	NLTEJXA95R1000489	USA
193.	OA18096	TS45	NLTEJXA93R1000488	USA
194.	OA18095	TS45	NLTEJXA91R1000487	USA
195.	OA18047	TS45	NLTEJXA9XR1000486	USA
196.	OA18046	TS45	NLTEJXA98R1000485	USA
197.	OA18045	TS45	NLTEJXA96R1000484	USA
198.	OA18044	TS45	NLTEJXA94R1000483	USA
199.	OA18043	TS45	NLTEJXA92R1000482	USA
200.	OA18024	TS45	NLTEJXA90R1000481	USA
201.	OA18023	TS45	NLTEJXA99R1000480	USA
202.	OA18022	TS45	NLTEJXA92R1000479	USA
203.	OA18021	TS45	NLTEJXA90R1000478	USA
204.	OA17991	TS45	NLTEJXA99R1000477	USA
205.	OA17990	TS45	NLTEJXA97R1000476	USA
206.	OA17989	TS45	NLTEJXA95R1000475	USA
207.	OA17988	TS45	NLTEJXA93R1000474	USA
208.	OA17977	TS45	NLTEJXA91R1000473	USA
209.	OA17976	TS45	NLTEJXA9XR1000472	USA
210.	OA17975	TS45	NLTEJXA98R1000471	USA
211.	OA17974	TS45	NLTEJXA96R1000470	USA
212.	OA17940	TS45	NLTEJXA9XR1000469	USA
213.	OA17939	TS45	NLTEJXA98R1000468	USA
214.	OA17927	TS45	NLTEJXA96R1000467	USA
215.	OA17887	TS45	NLTEJXA94R1000466	USA

No	Otpa No	Model	Chassis No	Country
216.	OA17886	TS45	NLTEJXA92R1000465	USA
217.	OA17885	TS45	NLTEJXA90R1000464	USA
218.	OA17884	TS45	NLTEJXA99R1000463	USA
219.	OA17856	TS45	NLTEJXA97R1000462	USA
220.	OA17855	TS45	NLTEJXA95R1000461	USA
221.	OA17854	TS45	NLTEJXA93R1000460	USA
222.	OA17853	TS45	NLTEJXA97R1000459	USA
223.	OA17852	TS45	NLTEJXA95R1000458	CANADA
224.	OA17851	TS45	NLTEJXA93R1000457	CANADA
225.	OA17850	TS45	NLTEJXA91R1000456	USA
226.	OA17817	TS45	NLTEJXA9XR1000455	USA
227.	OA17816	TS45	NLTEJXA98R1000454	USA
228.	OA17815	TS45	NLTEJXA96R1000453	USA
229.	OA17814	TS45	NLTEJXA94R1000452	USA
230.	OA17813	TS45	NLTEJXA92R1000451	USA
231.	OA17812	TS45	NLTEJXA90R1000450	USA
232.	OA17811	TS45	NLTEJXA94R1000449	USA
233.	OA17771	TS45	NLTEJXA92R1000448	USA
234.	OA17770	TS45	NLTEJXA90R1000447	USA
235.	OA17769	TS45	NLTEJXA99R1000446	USA
236.	OA17768	TS45	NLTEJXA97R1000445	USA
237.	OA17767	TS45	NLTEJXA95R1000444	USA
238.	OA17766	TS45	NLTEJXA93R1000443	USA
239.	OA17765	TS45	NLTEJXA91R1000442	USA
240.	OA17731	TS45	NLTEJXA9XR1000441	USA
241.	OA17730	TS45	NLTEJXA98R1000440	USA
242.	OA17729	TS45	NLTEJXA91R1000439	USA
243.	OA17693	TS45	NLTEJXA9XR1000438	USA
244.	OA17692	TS45	NLTEJXA98R1000437	USA
245.	OA17691	TS45	NLTEJXA96R1000436	USA
246.	OA17690	TS45	NLTEJXA94R1000435	USA
247.	OA17369	TS45	NLTEJXA99R1000432	USA
248.	OA17368	TS45	NLTEJXA97R1000431	USA
249.	OA17367	TS45	NLTEJXA95R1000430	USA
250.	OA17366	TS45	NLTEJXA99R1000429	USA
251.	OA17365	TS45	NLTEJXA97R1000428	USA
252.	OA17364	TS45	NLTEJXA95R1000427	USA
253.	OA17363	TS45	NLTEJXA93R1000426	USA
254.	OA17362	TS45	NLTEJXA91R1000425	USA
255.	OA17361	TS45	NLTEJXA9XR1000424	USA
256.	OA17286	TS45	NLTEJXA96R1000422	USA
257.	OA17285	TS45	NLTEJXA94R1000421	USA
258.	OA17284	TS45	NLTEJXA92R1000420	USA

No	Otpa No	Model	Chassis No	Country
259.	OA17283	TS45	NLTEJXA96R1000419	USA
260.	OA17282	TS45	NLTEJXA94R1000418	USA
261.	OA17214	TS45	NLTEJXA96P1000417	USA
262.	OA17213	TS45	NLTEJXA94P1000416	USA
263.	OA17199	TS45	NLTEJXA92P1000415	USA
264.	OA17198	TS45	NLTEJXA90P1000414	USA
265.	OA17176	TS45	NLTEJXA99P1000413	USA
266.	OA17175	TS45	NLTEJXA97P1000412	USA
267.	OA17155	TS45	NLTEJXA95P1000411	USA
268.	OA17126	TS45	NLTEJXA93P1000410	USA
269.	OA17125	TS45	NLTEJXA97P1000409	USA
270.	OA17102	TS45	NLTEJXA95P1000408	USA
271.	OA17101	TS45	NLTEJXA93P1000407	USA
272.	OA17100	TS45	NLTEJXA91P1000406	USA
273.	OA17038	TS45	NLTEJXA9XP1000405	USA
274.	OA17035	TS45	NLTEJXA98P1000404	USA
275.	OA17034	TS45	NLTEJXA96P1000403	USA
276.	OA17033	TS45	NLTEJXA96P1000434	USA
277.	OA17003	TS45	NLTEJXA94P1000433	USA
278.	OA17002	TS45	NLTEJXA94P1000402	USA
279.	OA17001	TS45	NLTEJXA92P1000401	USA
280.	OA16979	TS45	NLTEJXA90P1000400	USA
281.	OA16978	TS45	NLTEJXA98P1000399	USA
282.	OA16977	TS45	NLTEJXA96P1000398	USA
283.	OA16976	TS45	NLTEJXA94P1000397	USA
284.	OA16975	TS45	NLTEJXA92P1000396	USA
285.	OA16974	TS45	NLTEJXA90P1000395	USA
286.	OA16973	TS45	NLTEJXA99P1000394	USA
287.	OA16972	TS45	NLTEJXA91P1000423	USA
288.	OA16900	TS45	NLTEJXA97P1000393	USA
289.	OA16899	TS45	NLTEJXA95P1000392	USA
290.	OA16898	TS45	NLTEJXA93P1000391	USA
291.	OA16882	TS45	NLTEJXA91P1000390	USA
292.	OA16881	TS45	NLTEJXA95P1000389	USA
293.	OA16880	TS45	NLTEJXA93P1000388	USA
294.	OA16790	TS45	NLTEJXA91P1000387	USA
295.	OA16786	TS45	NLTEJXA9XP1000386	USA
296.	OA16785	TS45	NLTEJXA98P1000385	USA
297.	OA16784	TS45	NLTEJXA96P1000384	USA
298.	OA16783	TS45	NLTEJXA94P1000383	USA
299.	OA16745	TS45	NLTEJXA92P1000382	USA
300.	OA16737	TS45	NLTEJXA90P1000381	USA
301.	OA16736	TS45	NLTEJXA99P1000380	USA

No	Otpa No	Model	Chassis No	Country
302.	OA16728	TS45	NLTEJXA92P1000379	USA
303.	OA16727	TS45	NLTEJXA90P1000378	USA
304.	OA16647	TS45	NLTEJXA99P1000377	USA
305.	OA16646	TS45	NLTEJXA97P1000376	USA
306.	OA16645	TS45	NLTEJXA95P1000375	USA
307.	OA16644	TS45	NLTEJXA93P1000374	USA
308.	OA16643	TS45	NLTEJXA91P1000373	USA
309.	OA16642	TS45	NLTEJXA9XP1000372	USA
310.	OA16641	TS45	NLTEJXA98P1000371	USA
311.	OA16557	TS45	NLTEJXA96P1000370	USA
312.	OA16556	TS45	NLTEJXA9XP1000369	USA
313.	OA16555	TS45	NLTEJXA98P1000368	USA
314.	OA16544	TS45	NLTEJXA96P1000367	USA
315.	OA16543	TS45	NLTEJXA94P1000366	USA
316.	OA16542	TS45	NLTEJXA92P1000365	USA
317.	OA16531	TS45	NLTEJXA90P1000364	USA
318.	OA16530	TS45	NLTEJXA99P1000363	USA
319.	OA16529	TS45	NLTEJXA97P1000362	USA
320.	OA16528	TS45	NLTEJXA95P1000361	USA
321.	OA16527	TS45	NLTEJXA93P1000360	USA
322.	OA16509	TS45	NLTEJXA97P1000359	USA
323.	OA16508	TS45	NLTEJXA95P1000358	USA
324.	OA16507	TS45	NLTEJXA93P1000357	USA
325.	OA16506	TS45	NLTEJXA91P1000356	USA
326.	OA16505	TS45	NLTEJXA9XP1000355	USA
327.	OA16488	TS45	NLTEJXA98P1000354	USA
328.	OA16487	TS45	NLTEJXA96P1000353	USA
329.	OA16486	TS45	NLTEJXA94P1000352	USA
330.	OA16485	TS45	NLTEJXA92P1000351	USA
331.	OA16404	TS45	NLTEJXA90P1000350	CANADA
332.	OA16403	TS45	NLTEJXA94P1000349	USA
333.	OA16402	TS45	NLTEJXA92P1000348	USA
334.	OA16401	TS45	NLTEJXA94N1000347	USA
335.	OA16400	TS45	NLTEJXA92N1000346	USA
336.	OA16399	TS45	NLTEJXA90N1000345	USA
337.	OA16398	TS45	NLTEJXA95P1000344	USA
338.	OA16397	TS45	NLTEJXA97N1000343	USA
339.	OA16346	TS45	NLTEJXA95N1000342	USA
340.	OA16345	TS45	NLTEJXA93N1000341	USA
341.	OA16344	TS45	NLTEJXA91N1000340	USA
342.	OA16343	TS45	NLTEJXA95N1000339	USA
343.	OA16342	TS45	NLTEJXA9XP1000338	CANADA
344.	OA16336	TS45	NLTEJXA91N1000337	USA



TEMSA

SERVICE BULLETIN

No	Otpa No	Model	Chassis No	Country
345.	OA16335	TS45	NLTEJXA9XN1000336	USA
346.	OA16334	TS45	NLTEJXA98N1000335	USA
347.	OA16332	TS45	NLTEJXA92N1000332	USA
348.	OA16331	TS45	NLTEJXA90N1000331	USA
349.	OA16273	TS45	NLTEJXA99N1000330	USA
350.	OA16249	TS45	NLTEJXA96N1000334	USA
351.	OA15595	TS45	NLTEJXA94M1000329	USA
352.	OA15582	TS45	NLTEJXA92M1000328	USA