



STAR ONLINE PUBLICATION



Case Number: S2523000051

Release Date: May 2025

Symptom/Vehicle Issue: Antilock Brake System (ABS) Lamp On. C0033-29 Right Front Tone Wheel – Invalid Signal Diagnostic Trouble Code (DTC).

Customer Complaint/Technician Observation: Customer complaint of intermittent or steady ABS or Electronic Stability Control (ESC) lamps on. Technician finds C0033-29 DTC stored or active. See the below information if the complaint and C0033-29 is present.

Discussion: Inspection of the tone wheel should be performed. Metal dust or flakes could gather around the tone wheel area causing a false signal and resulting in the DTC setting. Repair will include disassembly, inspecting the tone wheel, removing/cleaning the debris from the hub bearing and reassembly.

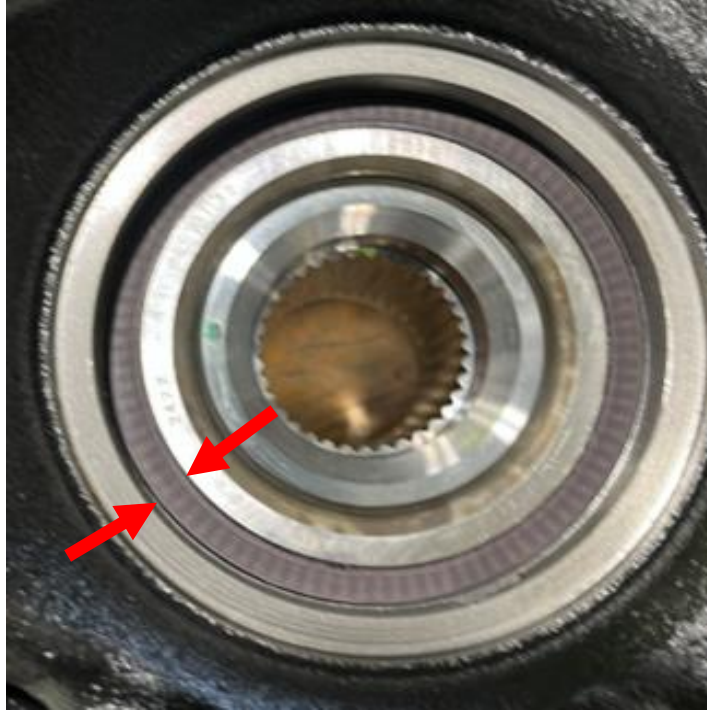
Remove the knuckle for the side setting the DTC. Refer to Service Library 02 - Suspension / Suspension / KNUCKLE / Removal and Installation. Clean and remove any debris including rust dust, particles sticking to the hub and tone wheel area. See the image below. Reassemble the vehicle. Perform a test drive. If the condition returns after a test drive, then replace the hub bearing (contains the tone wheel).

This document does not authorize warranty repairs. This communication documents a record of past experiences. STAR Online does not provide any conclusions about what is wrong with the vehicle. Rather, it captures all previous cases known that appear to be similar or related to the vehicle symptom / condition. You are the expert, and you are responsible for deciding on the appropriate course of action.

Contact STAR Center, or your Technical Assistance Center Via TechConnect, eCONTACT or Service Library entry if no solution is found.



STAR ONLINE PUBLICATION



Tone wheel (ring shown between arrows)

This document does not authorize warranty repairs. This communication documents a record of past experiences. STAR Online does not provide any conclusions about what is wrong with the vehicle. Rather, it captures all previous cases known that appear to be similar or related to the vehicle symptom / condition. You are the expert, and you are responsible for deciding on the appropriate course of action.

Contact STAR Center, or your Technical Assistance Center Via TechConnect, eCONTACT or Service Library entry if no solution is found.