

GENERAL MOTORS
DCS 7228
URGENT - DISTRIBUTE IMMEDIATELY

Date: May 21, 2025

Subject: REVISION: N242483540-01 - Service Update
Transmission Shifting Issues With DTC P2732
Revised Warranty Information

Models: 2024 Chevrolet Silverado 1500
2024 GMC Sierra 1500

This bulletin is being revised to update the Warranty Information. Please discard all previous copies of bulletin N242483540.

END OF MESSAGE

Service Update

N242483540 Transmission Shifting Issues with DTC P2732



Release Date: May 2025

Revision: 01

Revision Description: This bulletin has been revised to update the Warranty Information section. Please discard all previous copies of bulletin N242483540.

Attention: This service update includes vehicles in dealer inventory and customer vehicles that return to the dealership for any reason. This bulletin will expire at the end of the involved vehicle's New Vehicle Limited Warranty period.

For vehicles previously repaired in the U.S. or Canada for this condition under 25-NA-014, submit Field Action Status Change Form (CAM_03) with supporting documentation to close this field action. For all other countries, if the vehicle was previously repaired under warranty for this condition, follow the local process for manually closing the VIN.

Make	Model	Model Year	
		From	To
Chevrolet	Silverado 1500	2024	2024
GMC	Sierra 1500		

Investigate Vehicle History (IVH) in the GM Global Warranty Management system should always be checked to confirm vehicle involvement prior to beginning any required inspections and/or repairs.

Condition	Certain vehicles listed above may have a condition in which the transmission may not shift properly.
Correction	Dealers are to replace the transmission check balls and valve body spacer plate.

Parts

Quantity	Part Name	Part No.
1	SEAL-A/TRNS AUX FLUID PUMP OTLT PIPE	24271818
1	SEAL-A/TRNS AUX FLUID PUMP	24047734
1	BOLT/SCREW-C/VLV BODY	24050764
1	SEAL-A/TRNS FLUID PUMP	24290889
1	SEAL-A/TRNS FLUID PUMP	24270191
1	SEAL-EXH MANIF PIPE (MHT/MI2 ONLY)	15035747
1	SEAL - EXH MANIF R (MHT/MI2 ONLY)	15077362
5	VALVE-C/VLV BODY BALL CHK	96020431
1	PLATE ASM-C/VLV BODY SPCR (MHT or MI2)	24299519
1	PLATE ASM-C/VLV BODY SPCR (MQB)	24299518
9 Qts/8.5 L	Fluid A/Trans - ULV	19352619 US/19352620 Canada

Note: Use the VIN and the GM Electronic Parts Catalog (EPC) to determine which parts to order.

Reminder: Parts may be removed from SPRINT and Retail Inventory Management (RIM) and be non-returnable. Dealers should review the affected parts to confirm RIM managed status. Parts may have quantity limiters in effect. There is a small number of vehicles anticipated that will need this fix. **Due to the limited initial parts availability, dealers are encouraged not to order these parts for use as shelf stock.**

Warranty Information

Labor Operation	Description	Labor Time	Trans. Type	Net Item
9107883	Inspect Only – No Further Action Required	0.3	ZFAT	N/A
9107884	Replace Check Ball and Valve Body Spacer Plate With RPO MHT or MI2	3.5		
	With RPO MQB	2.1		
	ADD: With RPO ULV	0.3		

Service Procedure

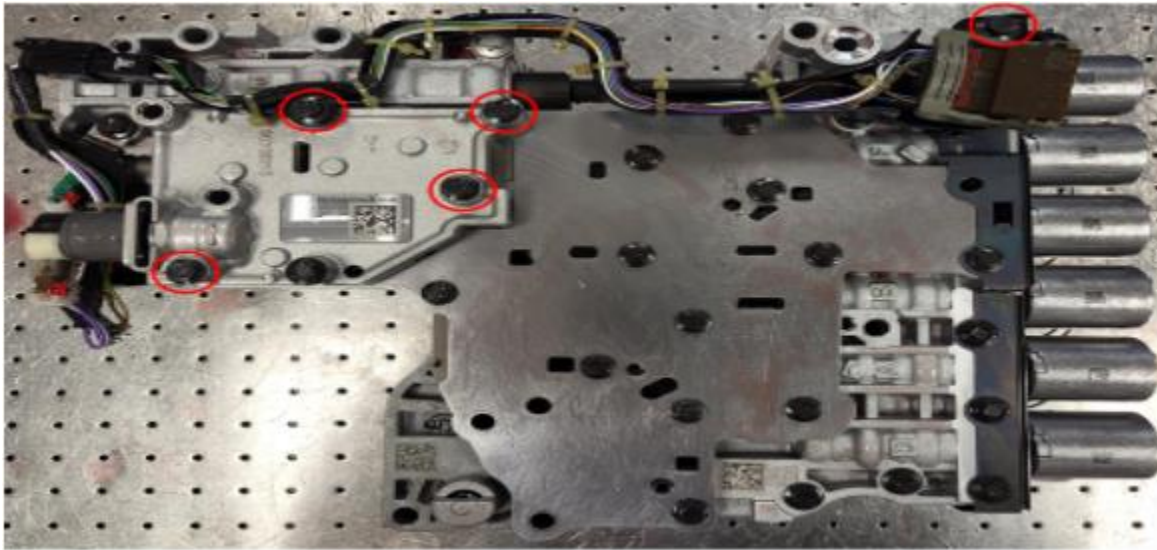
- Using a scan tool, verify vehicle does not have DTC P2732 set current or history.
 - If P2732 is NOT set current or history, no further action is required.
 - If P2732 IS set current or history, proceed to step 2.

Service Update

N242483540 Transmission Shifting Issues with DTC P2732

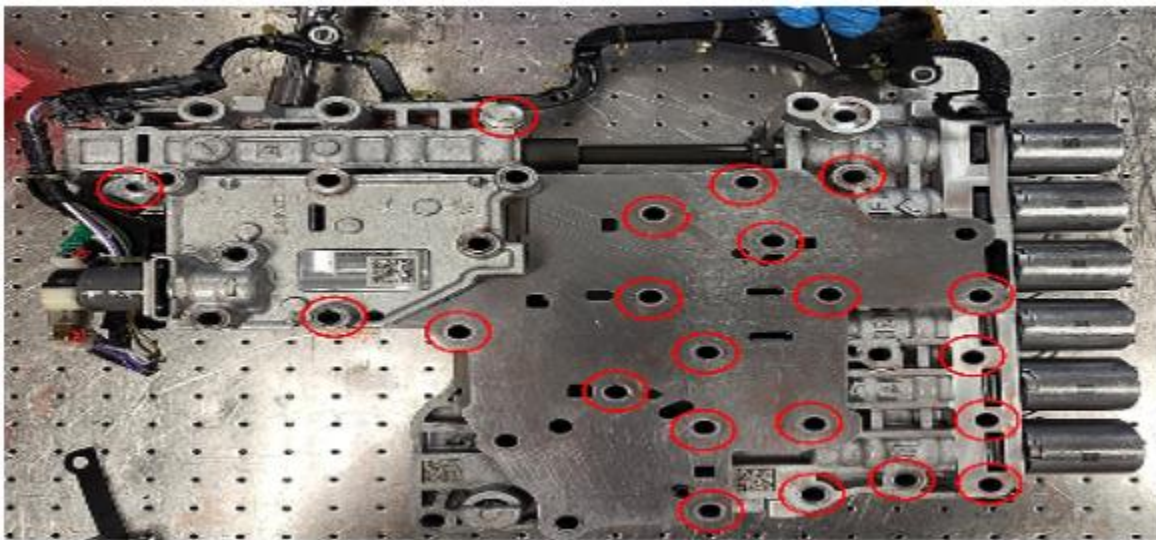


2. Remove the Valve Body. Refer to *Control Valve Body Replacement* in SI.



6804421

3. Remove the bolts that secure the auxiliary body to the Solenoid Body, as circled above.
4. Remove the wiring harness bolt and position the wiring harness aside.

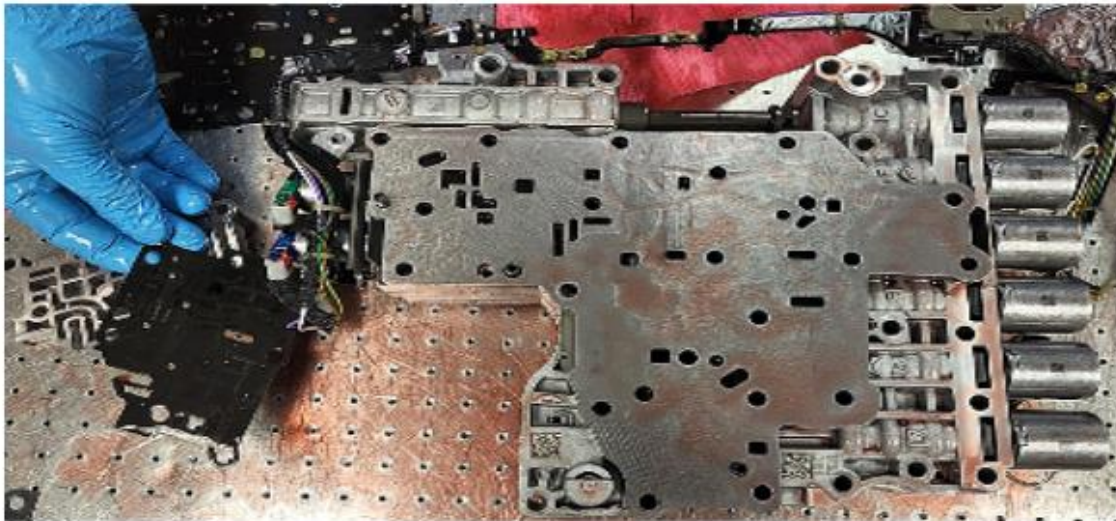


6804426

5. Remove the remaining bolts that secure the Solenoid Body as circled above.

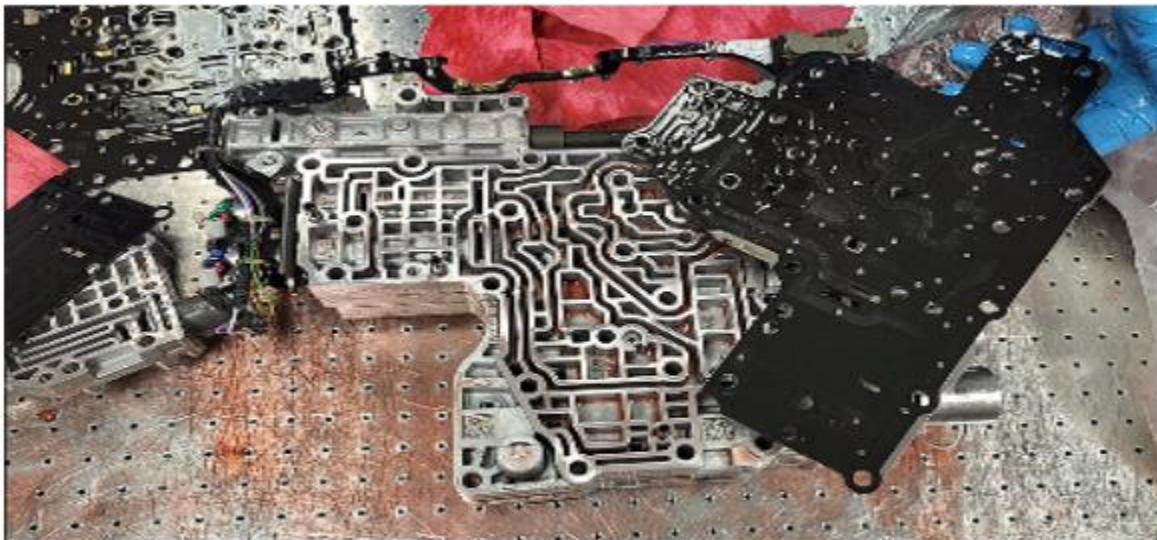
Service Update

N242483540 Transmission Shifting Issues with DTC P2732



6804446

6. Separate the Auxiliary Body and thick steel plate.

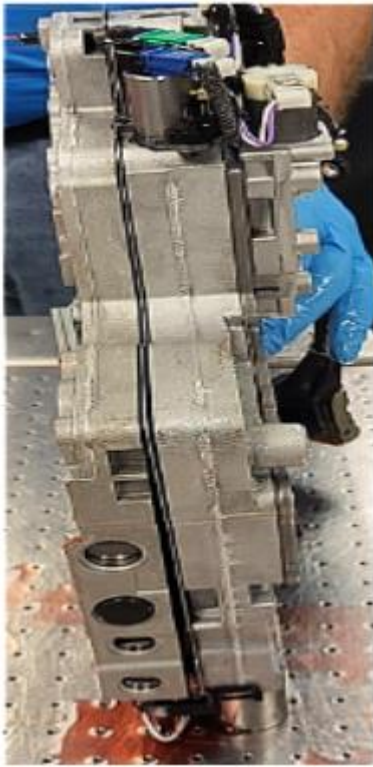


6804481

7. Separate the thick steel plate from the Solenoid Body as indicated above.

Service Update

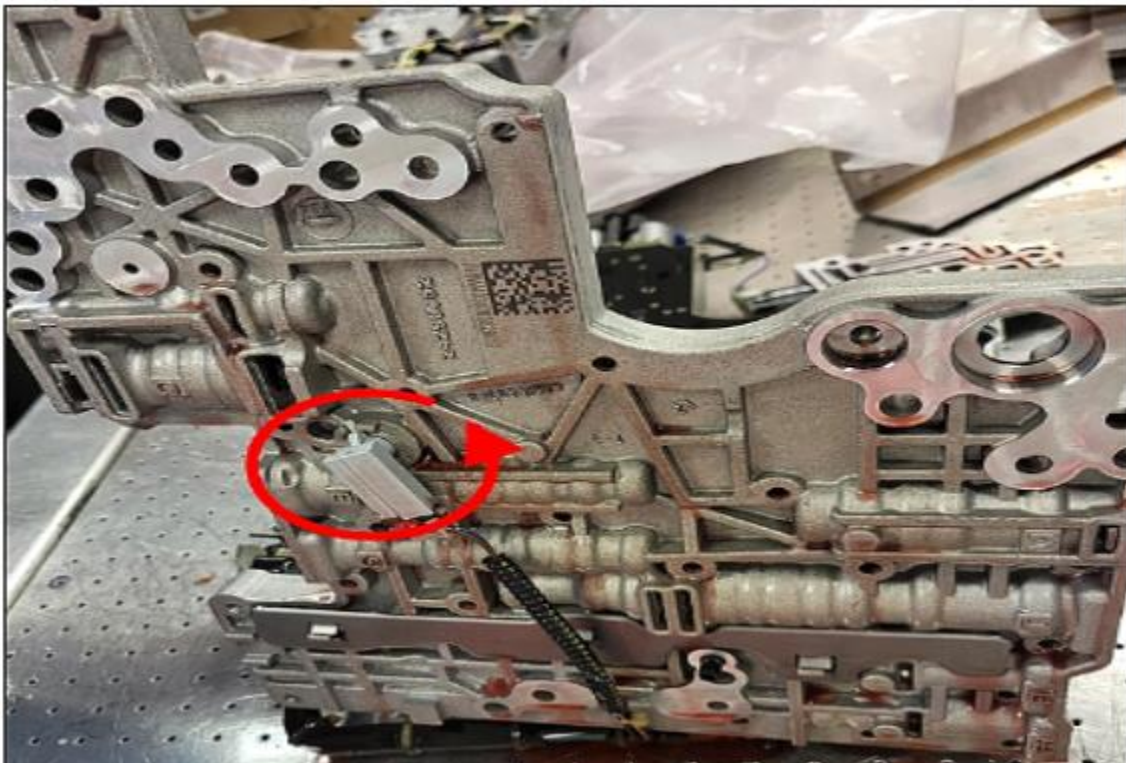
N242483540 Transmission Shifting Issues with DTC P2732



6804487

IMPORTANT: Use care not to damage or bend the solenoids.

8. Stand the valve body on its side with the solenoids at the base, slightly separate the valve body from the solenoid body.

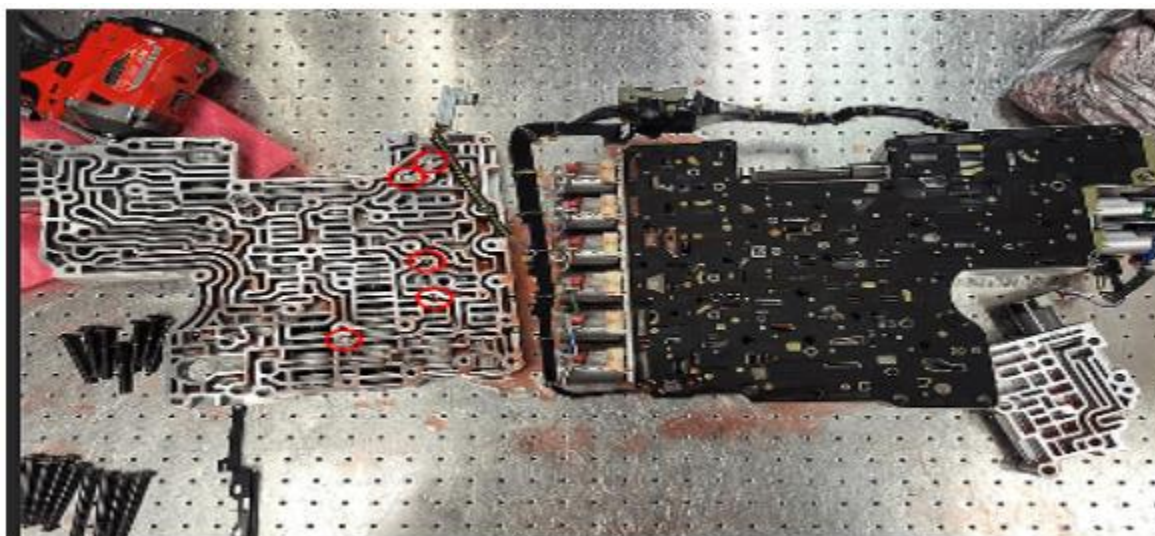


6804509

9. Once the valve body is partially separated from the solenoid body, twist the thermocouple and pull to remove.

Service Update

N242483540 Transmission Shifting Issues with DTC P2732



6804511

NOTE: Tilt the valve body backwards while lowering to the workbench surface so that the check balls do not fall out. There are 5 check balls in the control valve body.

10. Split the assembly in half. Tilt the Control Valve body backwards and lower to avoid spilling the check balls. DO NOT tilt the Control Valve Body forwards, or all the check balls will spill out.
11. Verify the 5 check balls remain in the control valve body.
12. Ensure the Solenoid Body is lying flat on the work surface with the spacer plate facing up.



6804467

NOTE: There are check balls beneath the spacer plate that may fall out if the Solenoid Body is tilted.

13. Remove the two bolts securing the Solenoid Body Spacer Plate as indicated above.
14. Remove and discard the Solenoid Body Spacer Plate.

Service Update

N242483540 Transmission Shifting Issues with DTC P2732



6804538

NOTE: The parts section indicates ordering 5 check balls. Replacement of the undersized check ball is all that is required, the extra check balls are included in the event that some are misplaced or damaged during replacement.

15. Utilizing a pick or equivalent tool, remove the undersized check ball from the check ball seat and discard. Use care not to damage the Solenoid Body surface.
16. Install a NEW check ball into the Solenoid Body.
17. Ensure all Solenoid Body components are in their correct position prior to installing the new Spacer Plate.

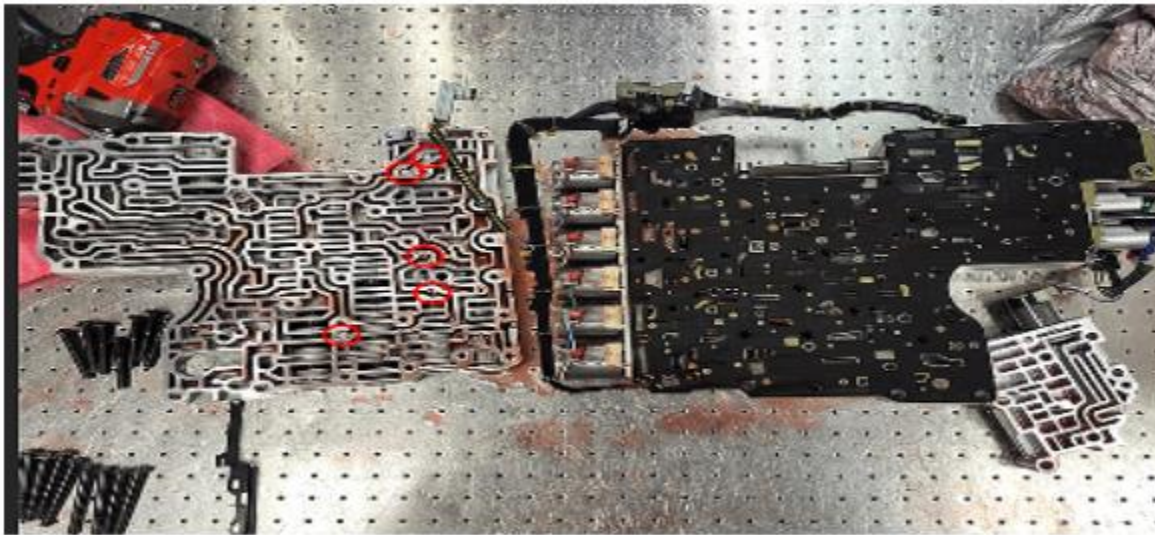


6804467

18. Install the NEW Solenoid Body Spacer Plate and tighten the two fasteners to 9Nm (80 lb-in).

Service Update

N242483540 Transmission Shifting Issues with DTC P2732



6804511

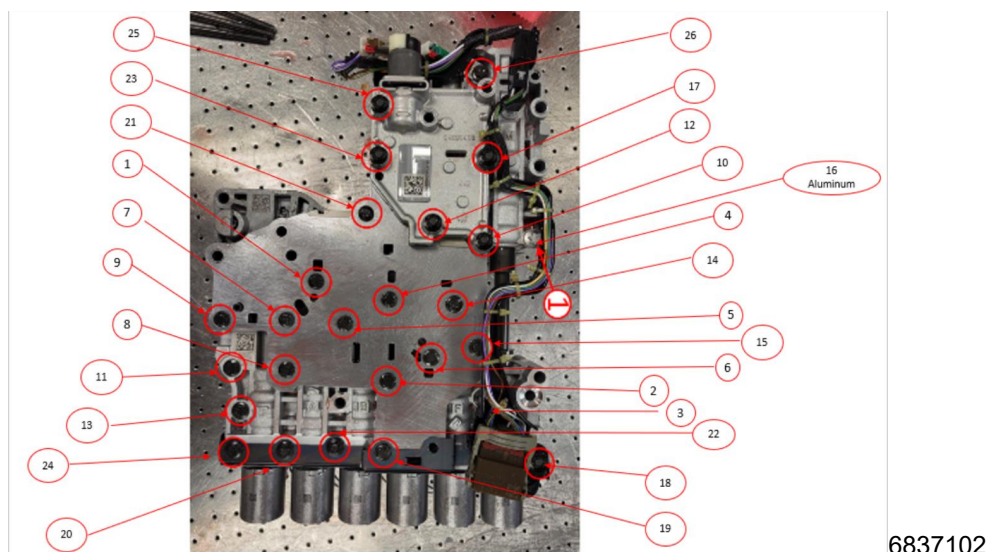
19. Verify Control Valve Body check balls are in their correct locations as indicated above.
20. Lay the Solenoid Body spacer plate side down onto the Control Valve Body, ensure the 2 locating dowels are properly aligned.

IMPORTANT: Use care not to bend or damage the solenoids. Ensure the Solenoid Body and Control Valve Body do NOT separate while standing on the solenoids, as the check balls could fall from their bores.

21. Hold the two halves together and stand the Valve Body assembly on the solenoids.
22. Place the thermistor previously removed in step 8 back into the valve body assembly. Rotate until the anti-rotation feature is aligned into the cast slot.
23. Lay the valve body assembly down on the work surface and place the thick steel plate back on top of the Solenoid Body. There are 3 locating dowels to aid alignment.
24. Place the Auxiliary Body Spacer Plate and Auxiliary Body onto the thick steel plate. There are 2 locating dowels to aid alignment.

Service Update

N242483540 Transmission Shifting Issues with DTC P2732



25. Reinstall all bolts following the bolt sequence and torque diagram shown above

- Tighten steel (black) fasteners to 9 Nm (80 lb-in)
- Torque aluminum (silver) fastener (1) to 3 Nm (27 lb-in) plus 30°.

26. Install the control valve assembly. Refer to *Control Valve Body Replacement* in SI.

27. Reinstall the transmission fluid pan. Refer to *Automatic Transmission Fluid, Fluid Pan and/or Filter Replacement* in SI.

Note: Characterization and Service Fast Learn are NOT required for this repair.

28. Fill the transmission to the proper level with NEW transmission fluid. Refer to *Transmission Fluid Level and Condition Check* in SI.

Dealer Responsibility

Whenever a vehicle subject to this service update enters your vehicle inventory or is in your facility for service in the future, and the vehicle is still covered under the New Vehicle Limited Warranty, you must take the steps necessary to be sure the service update correction has been made before selling or releasing the vehicle.

All new, used, GM Certified Pre-Owned (CPO), courtesy transportation vehicles, dealer shuttle vehicles, CarBravo, etc. in dealers' possession and subject to this field action must be held and inspected/repared per the service procedure of this bulletin before customers take possession of these vehicles. Involved vehicles must be held and not delivered to customers, dealer-traded, released to auction, used for demonstration, or any other purpose.

All GM Certified Pre-Owned (CPO) vehicles currently in the dealers' inventory within the SHIFT Digital system will be de-certified and must be held and remedied per the service procedure in this bulletin. Upon submitting an accepted/paid warranty transaction in the Global Warranty Management (GWM) system, the vehicle can be re-certified for sale within the SHIFT Digital system, or once again be used in the Courtesy Transportation Program.

Dealer Reports – For USA & Export

The Inventory tab of the Open Vehicle Report will contain Service Update Bulletin VINs that apply to this field action. This information is intended to assist dealers with the **PROMPT COMPLETION** of these vehicles. The Customer In-Service tab will not contain Service Update Bulletin VIN data because the intent of a Service Update Bulletin is to not inconvenience a customer with a special trip for service. Service Update Bulletins are to be completed when the customer is in for a regularly scheduled visit.

GM bulletins are intended for use by professional technicians, NOT a "do-it-yourselfer". They are written to inform these technicians of conditions that may occur on some vehicles, or to provide information that could assist in the proper service of a vehicle. Properly trained technicians have the tools, equipment, safety instructions, and know-how to do a job properly and safely. If a condition is described, **DO NOT** assume that the bulletin applies to your vehicle, or that your vehicle will have that condition. See your dealer for information on whether your vehicle may benefit from the information.



**We Support
Voluntary Technician
Certification**