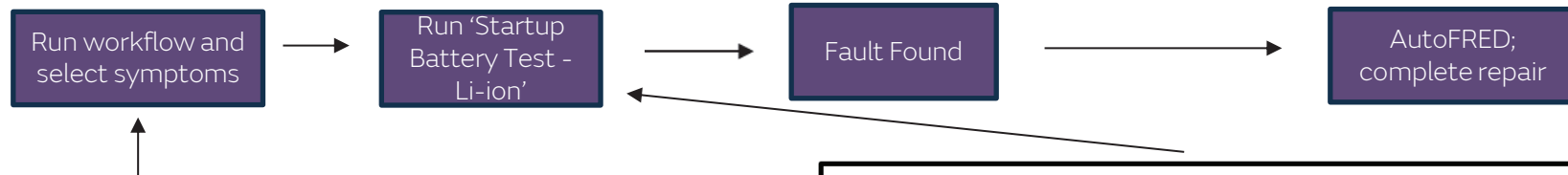


- Range Rover**
- 22-25MY Range Rover
 - 23-25MY RR Sport
- Defender**
- 25MY Defender OCTA



AUTOFRED APPROVAL – SBU (STARTUP BATTERY UNIT)

- Since **1st May**, the SBU (startup battery unit) aka Li-ion battery has been handled via AutoFRED for specific model callouts.
- The SBU is being handled via AutoFRED to establish trust in the workflow, as the workflow is designed to streamline battery diagnosis & repair.
- If there are stored codes, please run a workflow based on relevant symptom dropdowns.
- As the workflow is run, you will be prompted with two test plans titled “Vehicle 12V Circuit Recovery – Vehicle not Responsive Test” and “Startup Battery Test – Li-ion.” Please run “Vehicle 12V Circuit Recovery – Vehicle not Responsive Test” first and then the “Startup Battery Test – Li-ion” second.
- If the startup battery test plan finds a fault, you will be granted AutoFRED approval and may proceed with repairs.



- Electrical -> Battery and Charging System -> Low Voltage System (12V) -> Discharged Battery
- Electrical -> Battery and Charging System -> Low Voltage System (12V) -> Warning Message - Low Battery - Please Start Engine
- Electrical -> Battery and Charging System -> Low Voltage System (12V) -> Quiescent Drain
- Powertrain -> Engine -> Starting System -> Engine Will Not Crank
- Powertrain -> Engine -> Starting System -> Engine Cranks Slowly And Will Not Start
- Powertrain -> Engine -> Engine Performance -> Engine Not Starting
- Powertrain -> Engine -> Engine Performance -> Stop-Start Concern

TEST PLAN NIT when relevance determined: 26-02-2025 13:42:12 GMT

Tests relevant to the chosen symptom and DTCs present on the vehicle are displayed below. If you require an alternative test, please 'Select a Test' where a search function is available Select a test

Recommended Action	Relevance	Changed	VCI Required	Actions	Results
1 Startup Battery Test - Li-Ion	• Discharged Battery	04-11-2024	Yes	Run	
2 Vehicle 12V Circuit Recovery - Vehicle Not Responsive - Test	• Discharged Battery	-	No	Run	