



STAR ONLINE PUBLICATION



Case Number: S2523000043

Release Date: May 2025

Symptom/Vehicle Issue: Glasses Compartment Of The Overhead Console Will Not Open Or Close.

Discussion: Prior to replacement of the overhead console, review the below information for the console glasses compartment latch.

Repair Procedure:

1. Before replacing the overhead Console or the glasses compartment, make sure the locking latch is correctly placed on its position Figure 1.



Figure 1.
Locking Latch Correctly Positioned.

2. If the locking latch is dislodged as shown in Figure 2, please push the latch back to its position and check if the glasses compartment is working as designed. You can push the latch using your fingers only Figure 3.

This document does not authorize warranty repairs. This communication documents a record of past experiences. STAR Online does not provide any conclusions about what is wrong with the vehicle. Rather, it captures all previous cases known that appear to be similar or related to the vehicle symptom / condition. You are the expert, and you are responsible for deciding on the appropriate course of action.

Contact STAR Center, or your Technical Assistance Center Via TechConnect, eCONTACT or Service Library entry if no solution is found.



STAR ONLINE PUBLICATION

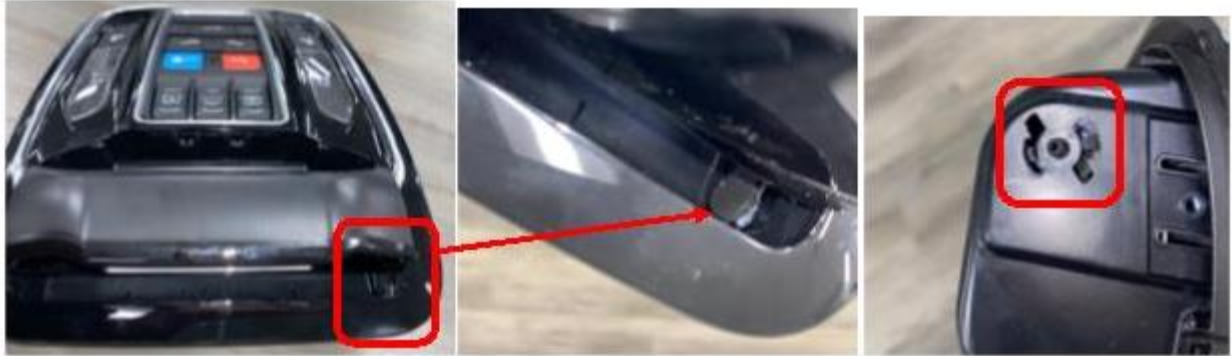


Figure 2.
Locking Latch Dislodged And In Incorrect Position.



Figure 3.
Pushing The Latch From The Inside To Correct The Position.

This document does not authorize warranty repairs. This communication documents a record of past experiences. STAR Online does not provide any conclusions about what is wrong with the vehicle. Rather, it captures all previous cases known that appear to be similar or related to the vehicle symptom / condition. You are the expert, and you are responsible for deciding on the appropriate course of action.

Contact STAR Center, or your Technical Assistance Center Via TechConnect, eCONTACT or Service Library entry if no solution is found.