

<b>ADDRESSEES</b>	: Owners and operators ABC Customer Care and Parts Source
<b>VEHICLE MODEL</b>	: All vehicles with Raufoss line fittings
<b>MANUAL CHAPTER</b>	: 13.25 Compressed-air supply – Lines
<b>BULLETIN TYPE</b>	: <b>Service information</b>
<b>DATE</b>	: May 05th, 2025
<b>SUBJECT</b>	: <b>To remove and install Raufoss line fittings</b>
<b>CONDITIONS</b>	: This service bulletin does not entitle to any reimbursement.

## INTRODUCTION

The purpose of this service bulletin is to inform you about the removal and installation of Raufoss line fittings

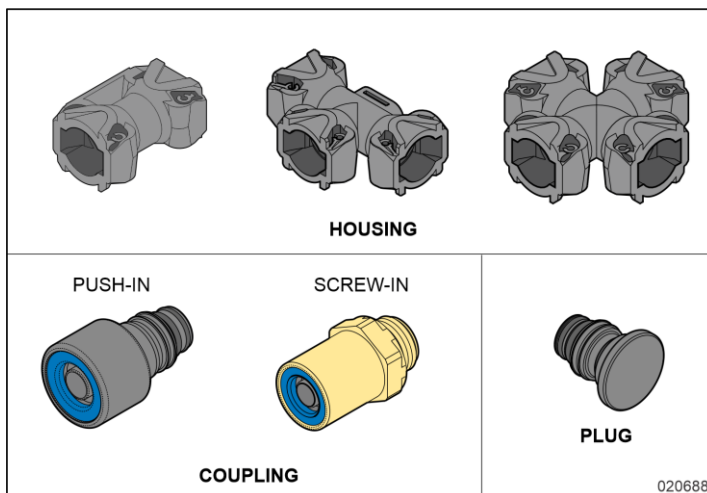
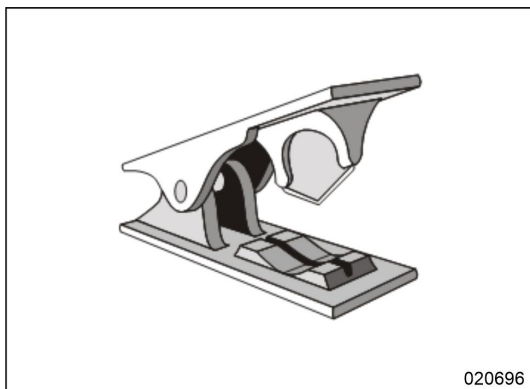


Figure 1: Some Raufoss parts

## GENERAL INSTRUCTIONS FOR CUTTING PLASTIC AIR TUBES



When cutting plastic air tubes, it is important to produce a square-end, free of any burrs, either on the outside or inside. Plastic air tubes should be cut with purpose-made cutting pliers (Figure 2 shows an example), never with ordinary cutting pliers or a hacksaw.

Figure 2: Example of a cutter for soft plastic tubes

*Continued on next page.*

## RELEASE TOOLS FOR RAUFOSS LINE FITTINGS

Description	VH reference	Figure
<b>To release fitting from housing</b>		
Standard snap ring pliers	-	 <p style="text-align: center;"><b>Figure 3</b></p>
<b>To release air tube from fitting</b>		
For air tube dia. 6 x 1 mm (1/4")	11329484	 <p style="text-align: center;"><b>Figure 4: Plastic release tool</b></p>
For air tube dia. 15 x 1,5 mm	11329490	
For air tube dia 10 x 1 mm (3/8")	11329502	 <p style="text-align: center;"><b>Figure 5: Metal release tool, long</b></p>
For air tube dia. 12 x 1,5 mm (1/2")	11329503	
For air tube dia. 6 x 1 mm (1/4")	11710644	 <p style="text-align: center;"><b>Figure 6: Metal release tool, short</b></p>
For air tube dia. 15 x 1,5 mm	11710650	
For air tube dia. 16 x 2 mm (5/8")	11329505	

*Continued on next page.*

## **PREPARATIONS**

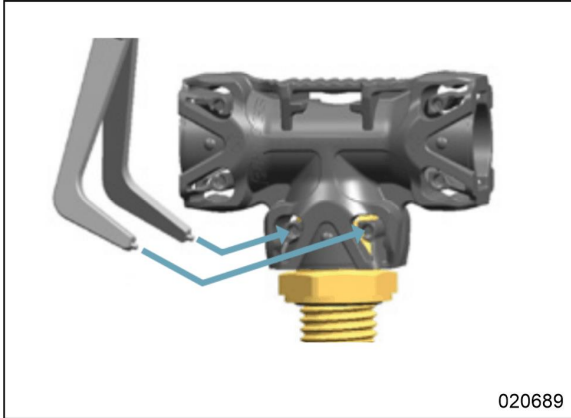
- Park the coach on a level surface.
- Apply the parking brake and shut down the engine.
- Switch off all systems and turn off the battery master switch.
- Put a “DO NOT OPERATE” tag on the steering wheel.
- Make sure the compressed-air circuit is depressurized.
- **Read the entire procedure before beginning to work.**



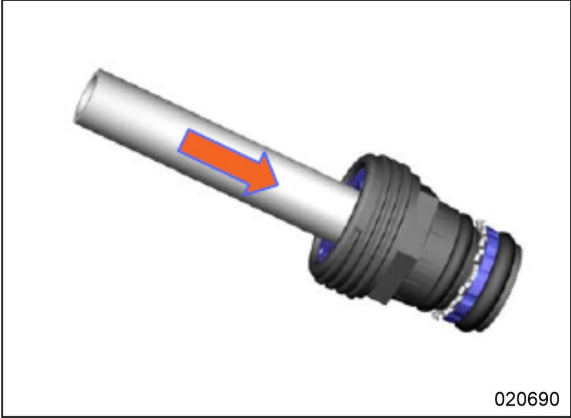
## **WARNING!**

Observe safe shop practices at all times.

## **TO REMOVE FITTING FROM HOUSING**

<b>Step</b>	<b>Action</b>
<b>1</b>	Open the snap arms on the housing by using a standard circlip pliers.  020689 <b>Figure 7</b>
<b>2</b>	Pull the fitting from the housing.

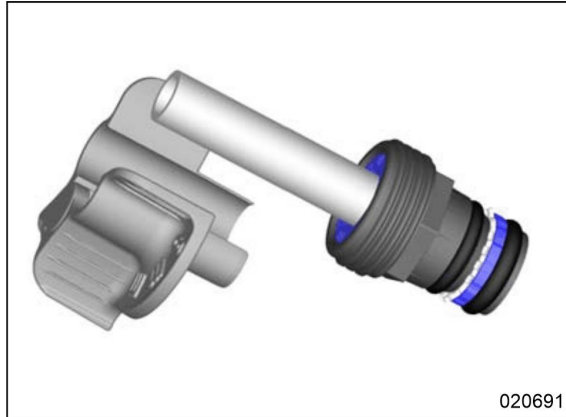
## **TO REMOVE AIR TUBE FROM FITTING**

<b>Step</b>	<b>Action</b>
<b>1</b>	Clean the top of the fitting to prevent dirt or contamination from entering the circuit.
<b>2</b>	Push the air tube to the bottom of the fitting to bring the internal grip ring into the unlocked position.  020690 <b>Figure 8</b>

*Continued on next page.*

2

Install the release tool on the air tube.

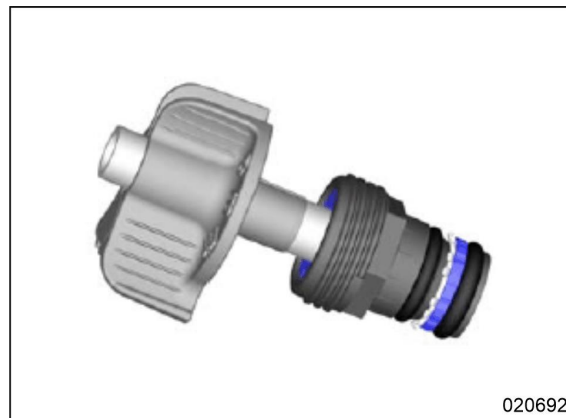


020691

Figure 9

3

Close the release tool and push it into the fitting. Make sure the flange of the release tool contacts the top of the fitting. Silicone spray can be used to facilitate the entering of the tool.

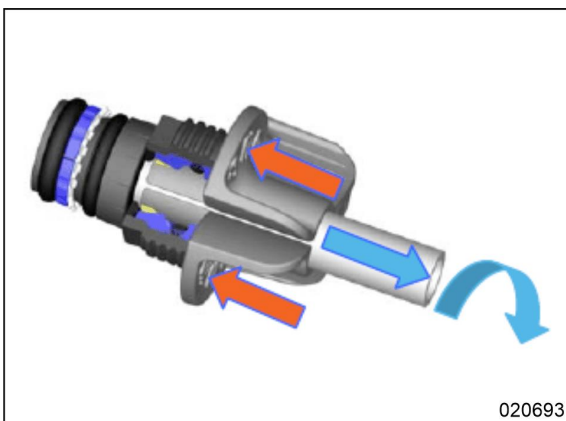


020692

Figure 10

4

While pushing the release tool towards the fitting, pull the air tube from the fitting. Rotating the air tube a few degrees may ease the release.



020693

Figure 11

*Continued on next page.*

## TO ENTER AIR TUBE INTO FITTING



### CAUTION!

Never enter a damaged or dirty air tube!

Step	Action
1	<p>Enter the air tube by pushing and rotating it simultaneously until it reaches the mechanical stop at the bottom of the fitting. During the push-in movement the air tube passes the environmental O-ring, the grip ring and the main O-ring.</p> <div data-bbox="502 555 1077 969" data-label="Image"></div> <p>Figure 12</p>
2	<p>Pull back the air tube by hand to secure the assembly.</p>

*NOTE: An aperture in the blue part of the fitting will give space for a displacement of the environmental O-ring when the air tube is not fully entered. This induces a clear whistle sound once the circuit is under pressure. If this should happen when performing a leakage test afterwards, it can easily be remedied by entering the air tube a little further into the fitting. This can even be done when the circuit is still under pressure.*

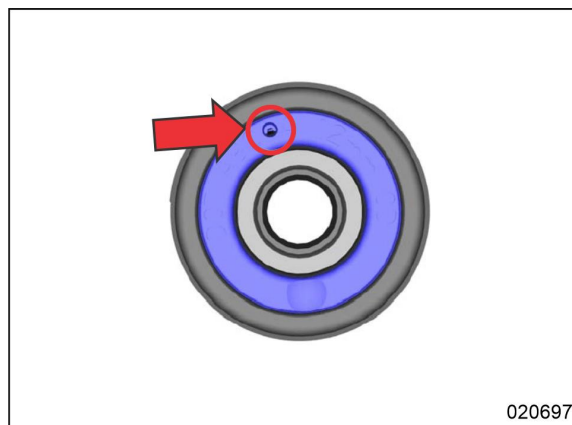


Figure 13: Aperture in blue part of coupling

## TO ENTER FITTING INTO HOUSING

Enter the fitting straight into the housing until you hear two “clicks” (= two step connection).

*Continued on next page.*

## **HELP DESK**

If there are any questions, please call ABC Customer Care & Parts Source toll-free for guidance on 1-877-427-7278. Listen for the prompts for warranty and select that option.

## **DISCLAIMER**

The procedures contained herein are not exclusive. VDL Van Hool cannot possibly know, evaluate, or advise the transportation industry of all conceivable ways in which a procedure may be undertaken or of the possible consequences of each such procedure. Other methods may be equally reasonable or even more effective, depending on the specific circumstances involved. Each carrier that uses the procedures herein must thoroughly ensure that neither the safety of its employees or agents, nor the safety or usefulness of any products, will be jeopardized by any procedure selected.

## **INFORMATION HANDLING**

Important additions and modifications regarding technical information not yet included in the manual will be communicated through Service Bulletins.

## **VDL VAN HOOL CUSTOMER PORTAL**

Consult the customer portal regularly for the latest service documentation. In addition to the maintenance manual, you will also find the operating manual and the spare parts catalogue of your vehicle on the customer portal. The customer portal is accessible through [www.vdlvanhool.com/MyVDL Van Hool](http://www.vdlvanhool.com/MyVDL%20Van%20Hool), and only with a code (password) from VDL Van Hool. If you do not have a password yet, request it by using the link on the VDL Van Hool website.