



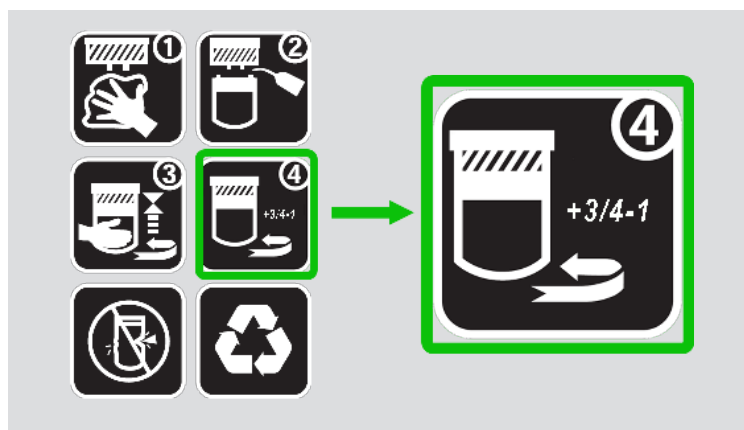
# PRODUCT NEWS

**WIX SPIN-ON FILTERS | PRODUCT UPDATE | 02/25/2025**

## WIX PASSENGER CAR AND LIGHT TRUCK FILTERS

As a reminder, each filter is provided with specific turn instructions after gasket contact with the engine oil filter base sealing surface. The instructions ensure adequate gasket compression when installing the filter. The subjective “hand tight” approach to filter installation, which remains prevalent in the field, may result in improper installation. To eliminate subjectivity and ensure adequate gasket compression, the installation instruction for the listed catalog numbers will be updated to  $\frac{3}{4}$  to 1 full turn after gasket contact. Always follow the complete installation instructions printed on the filter, including fully installing the filter to the recommended number of turns.

<b>57060</b>	<b>WL10290</b>	<b>WL10255</b>
<b>57060MP</b>	<b>WL10290MP</b>	<b>WL10255MP</b>
<b>57060XP</b>	<b>WL10290XP</b>	<b>WL10255XP</b>
<b>MGL57060</b>	<b>MGL10290</b>	<b>MGL10255</b>
<b>PXL57060</b>	<b>PXL10290</b>	<b>PXL10255</b>
<b>PXL57060MP</b>	<b>PXL10290MP</b>	<b>PXL10255MP</b>
<b>R7060</b>	<b>RO290</b>	<b>RO255XL</b>



### CATALOG NUMBERS

### UPDATED INSTRUCTION

## INSTALLATION STEPS

Step 1: To ensure proper installation, always clean the engine oil filter base sealing surface.

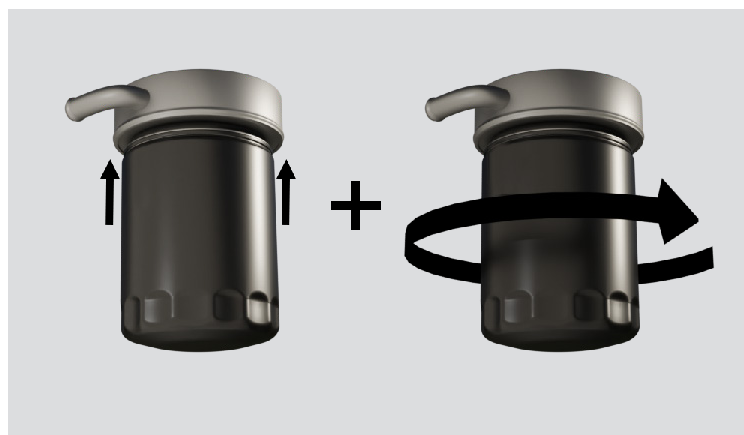
Step 2: Lubricate the gasket with fresh oil making sure it is fully seated in the gasket groove.

Step 3: Tighten the filter until the gasket contacts the engine oil filter base sealing surface.

Step 4: Tighten  $\frac{3}{4}$  to 1 turn after gasket makes full contact with the engine oil filter base sealing surface.

Step 5: Check to ensure the filter has not been damaged during installation and check for leaks at engine start-up.

To achieve correct installation, it may be necessary to use a cap wrench to tighten the filter. Remember to dispose of all used oil and filters in accordance with all legal and regulatory requirements.



### GASKET CONTACT

### $\frac{3}{4}$ -1 TURN

For questions or more information please contact your local WIX Filters District Manager or call Product Information at 1.800.949.6698