

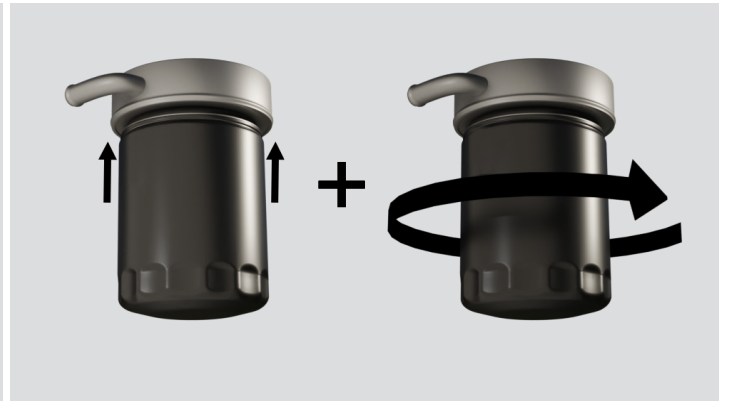
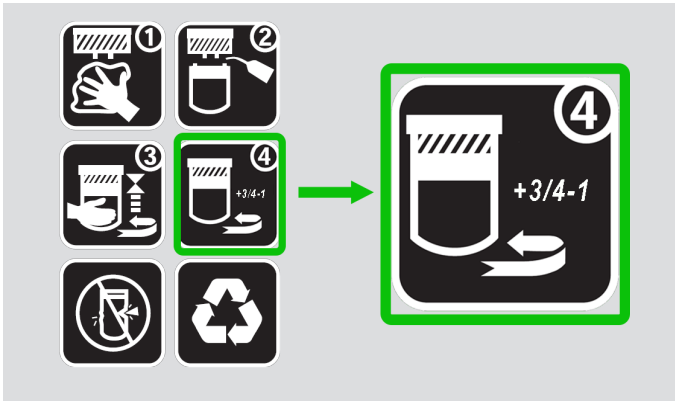
Filter tech

Spin-on Filters | Product Update | 03/24/2025

PASSENGER CAR AND LIGHT TRUCK FILTERS

As a reminder, each filter is provided with specific turn instructions after gasket contact with the engine oil filter base sealing surface. The instructions ensure adequate gasket compression when installing the filter. The subjective “hand tight” approach to filter installation, which remains prevalent in the field, may result in improper installation. To eliminate subjectivity and ensure adequate gasket compression, the installation instruction for the listed catalog numbers will be updated to $\frac{3}{4}$ to 1 full turn after gasket contact. Always follow the complete installation instructions printed on the filter, including fully installing the filter to the recommended number of turns.

57060	WL10290	WL10255
57060MP	WL10290MP	WL10255MP
57060XP	WL10290XP	WL10255XP
MGL57060	MGL10290	MGL10255
PXL57060	PXL10290	PXL10255
PXL57060MP	PXL10290MP	PXL10255MP
R7060	R0290	RO255XL



INSTALLATION STEPS

Step 1: To ensure proper installation, always clean the engine oil filter base sealing surface.

Step 2: Lubricate the gasket with fresh oil making sure it is fully seated in the gasket groove.

Step 3: Tighten the filter until the gasket contacts the engine oil filter base sealing surface.

Step 4: Tighten $\frac{3}{4}$ to 1 turn after gasket makes full contact with the engine oil filter base sealing surface.

Step 5: Check to ensure the filter has not been damaged during installation and check for leaks at engine start-up.

To achieve correct installation, it may be necessary to use a cap wrench to tighten the filter. Remember to dispose of all used oil and filters in accordance with all legal and regulatory requirements.

FOR QUESTIONS OR MORE INFORMATION PLEASE CONTACT PRODUCT INFORMATION AT 1.800.949.6698