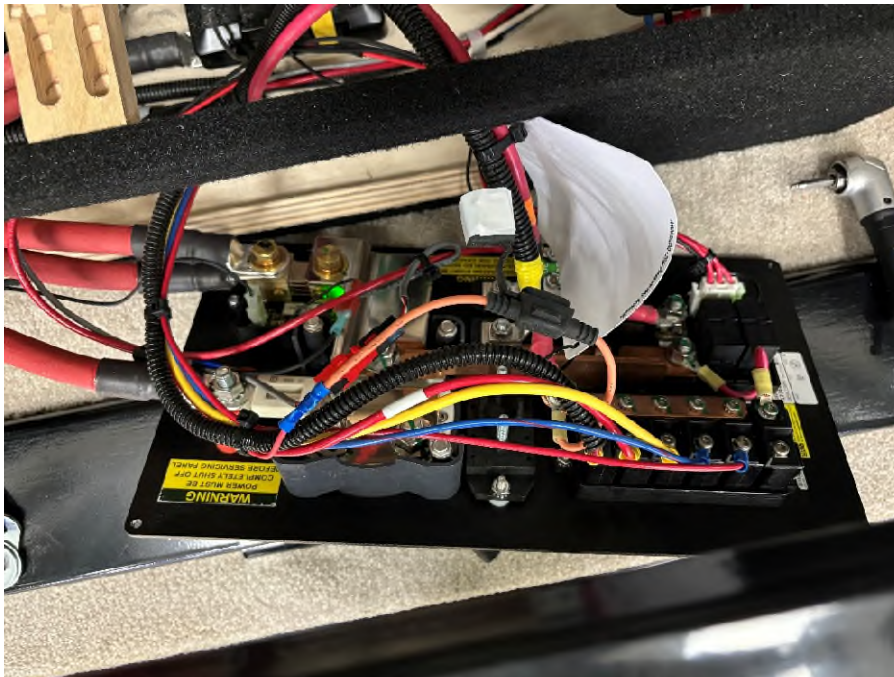


## Trustate Monitor Replacement

Remove the 4 screws in the DCD panel. Pivot the right side out and slide the assembly to the right while carefully guiding the wiring with it.



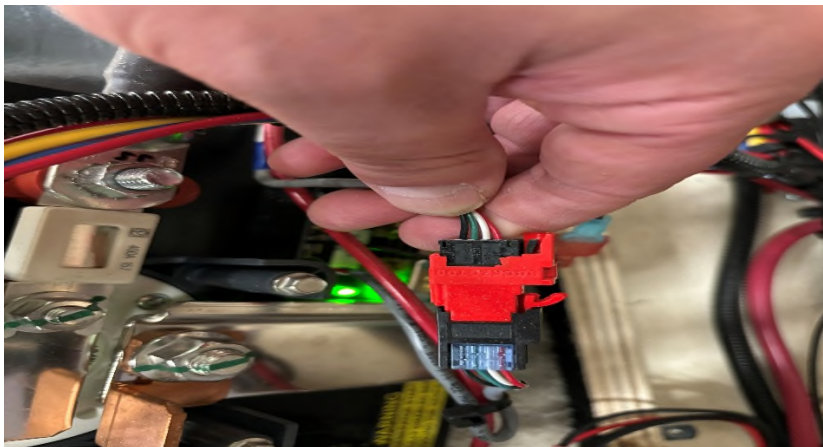
Lay the panel down flat, exposing the back side. The Trustate monitor is in the lower rear left hand corner.



On the Trustate Monitor, disconnect the thermistor (white plug with 2 black wires):



Disconnect the communication cable:

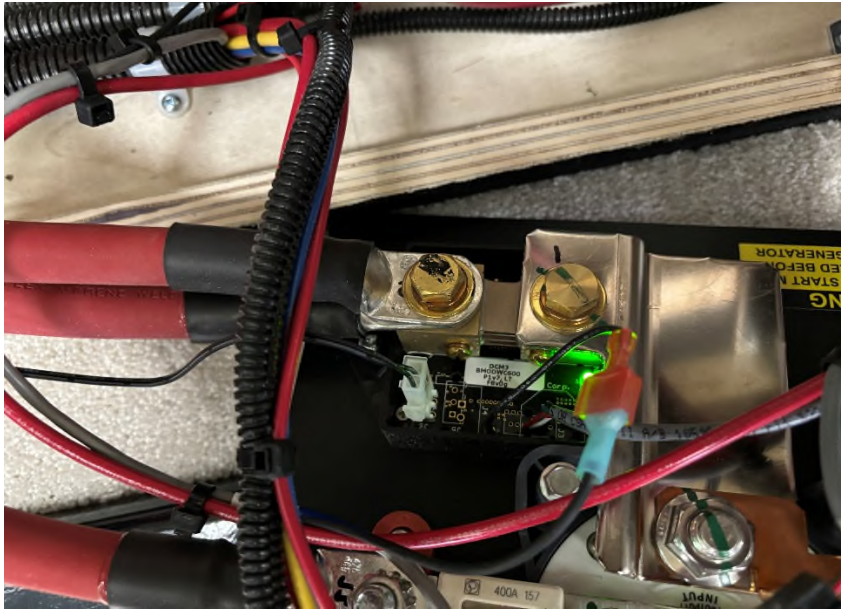


Disconnect the ground:



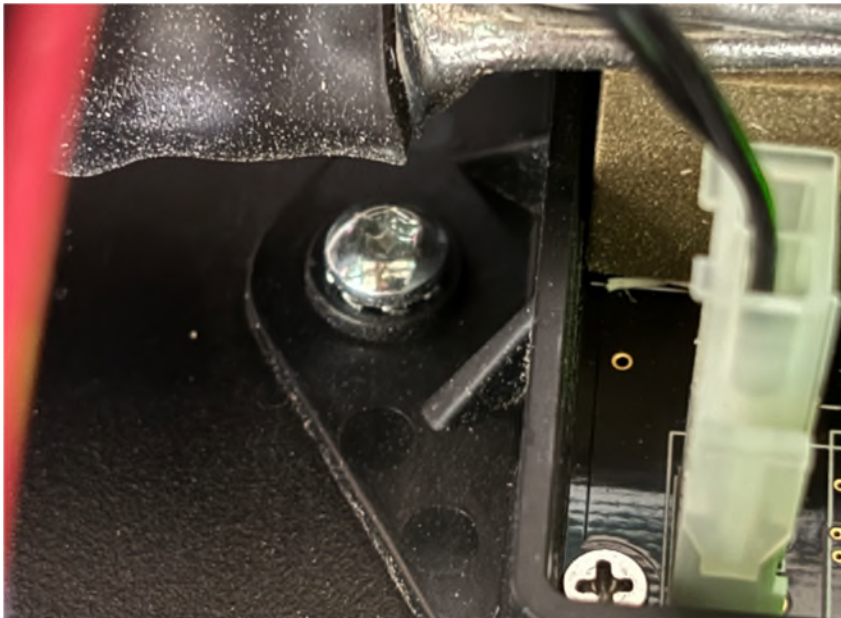


Remove the 2 brass colored bolts using a 9/16 socket. Keep note of the longer bolt as it is required for the connection with the 2 red cables.



\*Tape these 2 red cables as carefully set aside making sure they do not touch anything grounded. These lines are live with 12v + from the batteries. The metal bar that secures the seatbelts at the back of the coach for example is grounded.

There is a Torx screw, size T20, securing the module to the DCD panel. Remove this Torx screw and slide the module out of position.



Slide the new module into position and secure the Torx screw first. Then work your way in reverse order to re-install the replacement module. The brass colored bolts are torqued to 100" lbs. Once completed, access the rear touch screen in the coach and follow the prompts for update master.