

L74X-
A.05.25

To: After Sales Official Network
Object: BL5.2 BL Update PN_47B990100D_REV0101
Date: 03/04/2025
Pages: 15



Campaign code:
L74X-A.05.25

Campaign name:
BL5.2 BL Update PN_47B990100D_REV0101

Model:
Revuelto

Model Year:
2025

Markets:
ALL

VIN Involved:
Until 2687 (included)

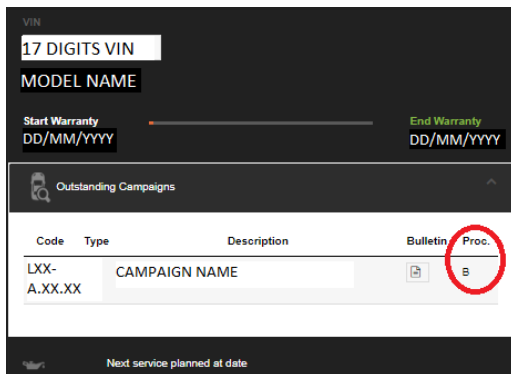
Important information: before proceeding with the repair, connect to the Warranty Portal and, using the “VIN Info” function, check that:

- The vehicle is affected by the instructions contained in this bulletin.

NOTE: some vehicles may not be affected, despite the fact that their Vehicle Identification Number (VIN) falls within the range.

- Only replacement parts that correspond to the specific operation, identified by a letter (such as A, B, C, etc.), are to be used for the chassis being repaired.

Example



N.B.:

Operation A will be available only when the instructions require a preliminary check to be performed to determine whether or not the vehicle actually needs updating.

Information for the service network:

During ongoing product monitoring, Automobili Lamborghini S.p.A. informs you that a new base-line software update is now available.

Solution for the field:

Update the car as stated in the follow instructions.



IMPORTANT!

Before carrying out the operations contained in this bulletin, please execute any other campaigns planned for this vehicle in the time order in which they were issued. The time order can be identified by the name of the bulletin. Example: L62X-A-04.19 is bulletin number 4 of 2019.

Spare Parts:

None

Management of replaced parts:

Store the components that have been removed from the vehicle in an appropriate manner, marking them with their corresponding bar codes so that they can be identified during visits by the competent Area Manager.

Labor time:

Operation B: 2,0 h

Previous bulletins superseded.

L74X-A.04.25_BDM_12V_Update_EN_PN_47B990100A_Rev_0112_rev00

Rev.05

CONFIDENTIAL

The procedures and information published herein are strictly confidential and are intended exclusively for recognized professionals and persons who are authorized to receive said information. All copyrights are the property of Automobili Lamborghini S.p.A pursuant to copyright law. The company reserves the right to make updates and modifications as needed. The reprinting, reproduction, distribution to unauthorized persons and/or to third parties, and the partial or complete translation of the material contained herein are prohibited without the express written consent of Automobili Lamborghini S.p.A.

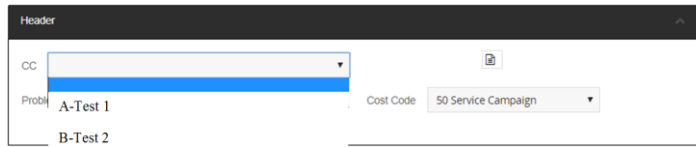
1/15

Doc. no.: L/V6_M06 Rev.[07]



Warranty claims instructions:

To request reimbursement for the repair performed, access the “LIASS” system on the Lamborghini portal and, following the instructions in the system’s “Manuals” section, generate and fill out a Warranty Request. Select the required campaign and proceed with entry; carefully read the options present in the alert message that displayed by the system (see example) and select the option performed on the vehicle.



Reimbursement will be structured as follows based on the operation performed:

- **OPERATION B:**
 - o Steps to be executed: 1 to IV
 - o Labor time: 2,0 h

At the end of the steps mentioned in the Operation B, the following ECUs will have the following SWs target:

ECU	SW version
Engine Master 01	0004
Transmission 02	0010
Brake 03	0181
Engine Slave 11	0004

Important information:

attach all documents generated during the work carried out, evidence of the work itself, for instance work orders and diagnostic protocols with BETA-Reports.

If one or more of these is missing, it may lead to a rejected reimbursement request.

Fill out the page in the warranty booklet (identified in the image below) in the section “Service and Recall Campaigns”:

Tools/Materials required

Code	Description.	Q.ty
n/a	n/a	n/a



N.B.

All O.D.I.S. Service technical documentation can be viewed on the Lamborghini web portal, in the O.D.I.S. Sel Service app.

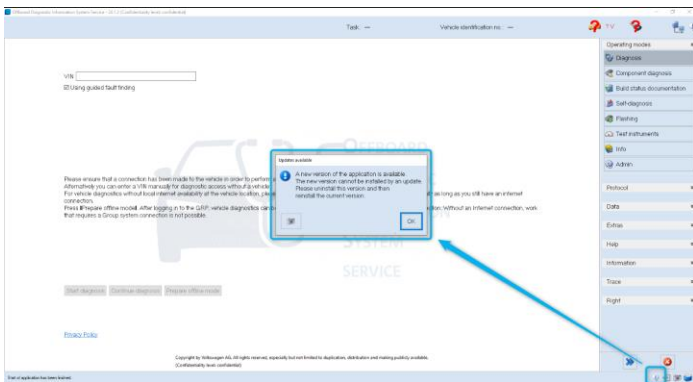


Preliminary operations:

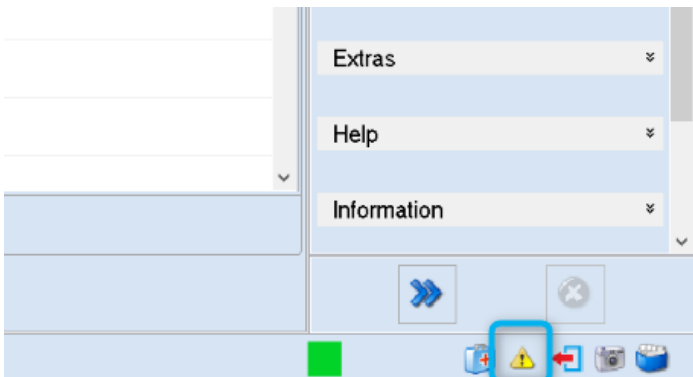
The instructions contained in this bulletin are based on the O.D.I.S. Service diagnosis software updated at the last version. **Please, make sure that O.D.I.S. Service is properly updated on your laptop.**

To do that, open O.D.I.S Service and check if are present one of the icons shown in the images below:

1. Update O.D.I.S Service by uninstalling and reinstalling the SW: further instructions available on the O.D.I.S Self Service APP.



2. O.D.I.S Service “Automobili Lamborghini” post-setup update



If one of these icons appear, please proceeded to update O.D.I.S Service.



IMPORTANT!

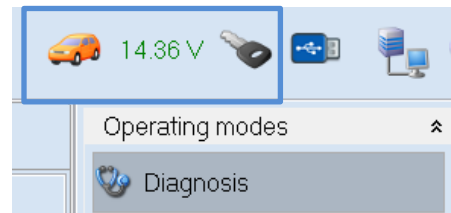
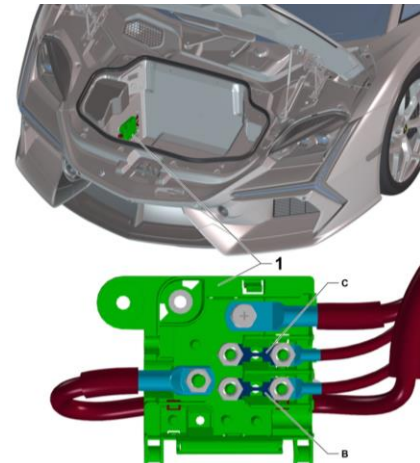
Before carrying out the operations contained in this bulletin is **mandatory** to install the last Hotfix available at the following DMS link:

[Lamborghini DMS → ROOT → Service → Diagnosis → Documents → O.D.I.S. Service → Download → O.D.I.S. Service HOTFIX](#)



NOTE:

It is essential that you connect an appropriate battery charger to the charge points available in the luggage hood (front center of the vehicle). **The voltage must remain constant above 13V: Set the battery charger and check the voltage status directly on O.D.I.S Service, as shown below:**





Repair method:

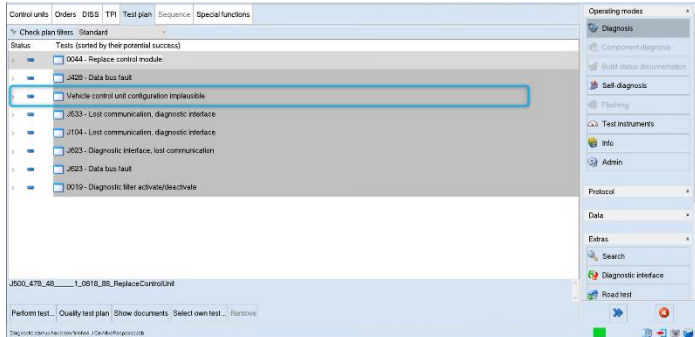
The updating procedure described here includes the following steps:

- I. ECU 0019 check DTC;
- II. ECU 11 update to SW 0004
- III. SVM update and configuration;
- IV. Erase fault memory;

I. ECU 0019 check DTC;

- 1. Check the DTCs from the ECU 0019: If the DTC **“C12A5F0: Vehicle electrical system configuration implausible”** is present and is in **“active”** status, please perform the GFF **“Vehicle configuration implausible”** from the Test Plan, as shown below:

Entries in event memory	
Number:	C12A5F0: Vehicle electrical system configuration implausible
Error type 2:	active/static
Symptom:	8519651
Status:	0001001

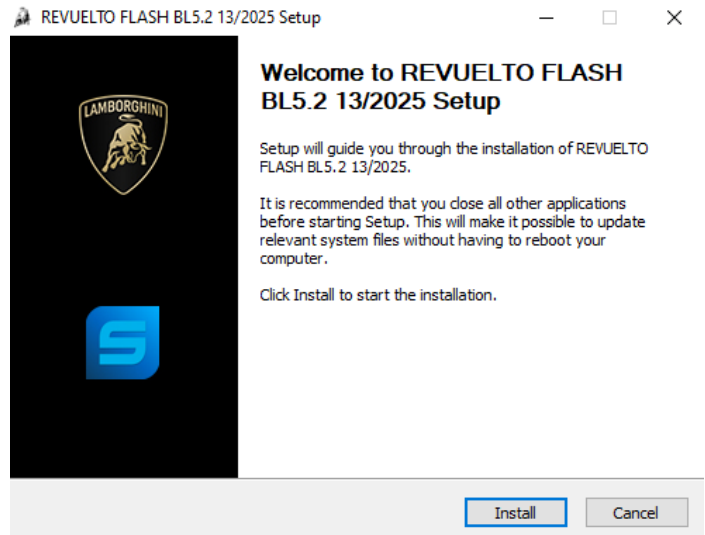


II. ECU 11 update to SW 0004

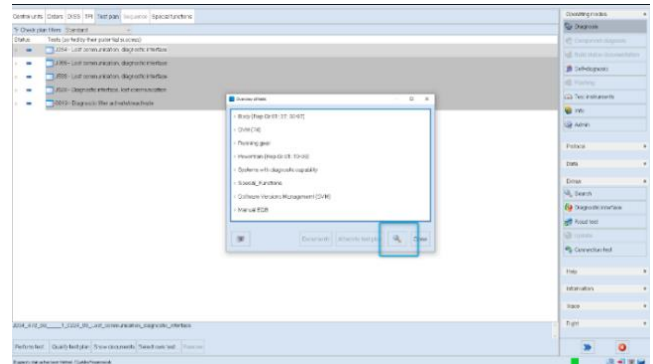
- 2. From the Lamborghini HUB, at the following link, download and execute the flash data container:

[DMS --> ROOT--> Service--> Diagnosis --> Documents --> O.D.I.S. Service --> Download --> O.D.I.S Service Flashdatacontainer --> For Re-vuelto -->Lamborghini_Flash_Re-vuelto_BL5.2.exe](#)

- 3. The following setup appear: Click on **“Install”** and follow the instructions.

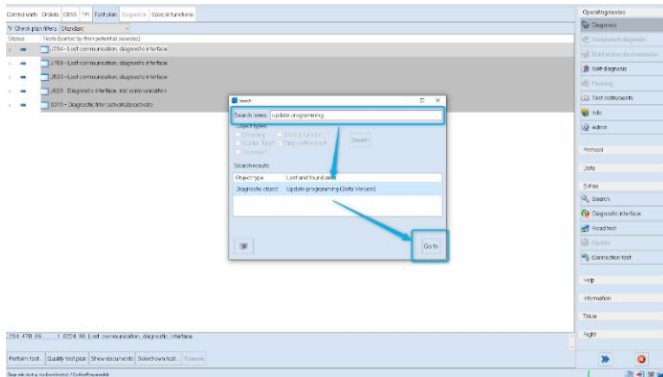


- 4. From the "Test plan" menu. Click on the **“Select own test”** box and then click on the magnifying glass:

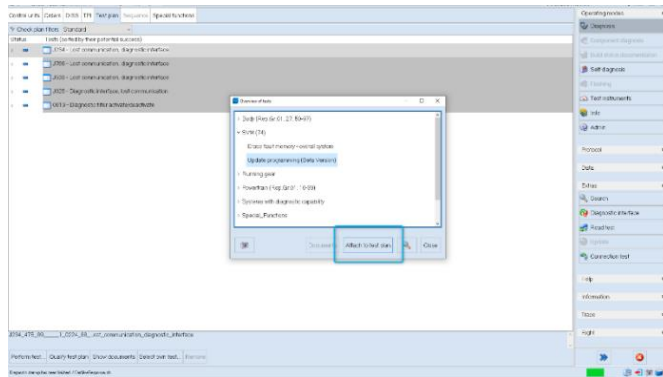




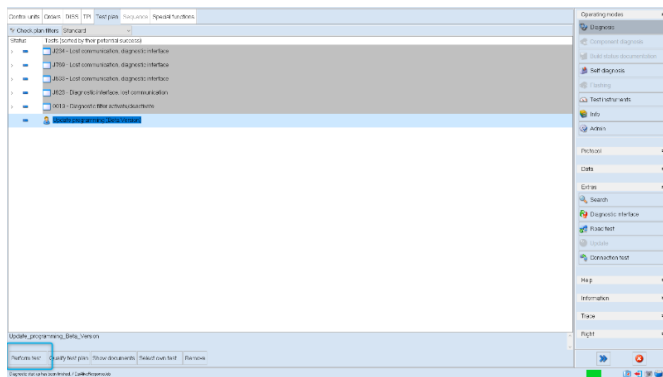
5. Enter in the search bar “Update programming”. Select the function “Update programming (Beta Version)” and click on “Go to”.



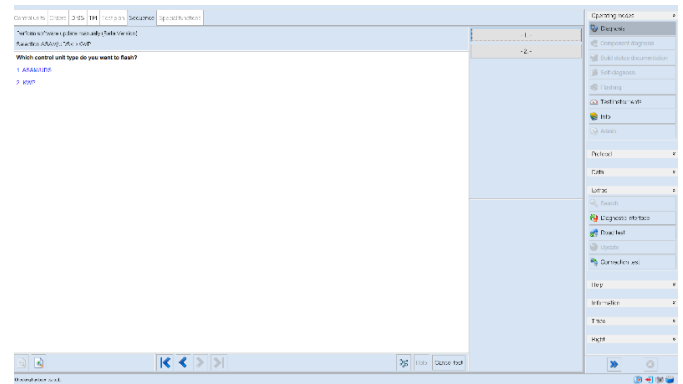
6. Click on “Attach to test plan”.



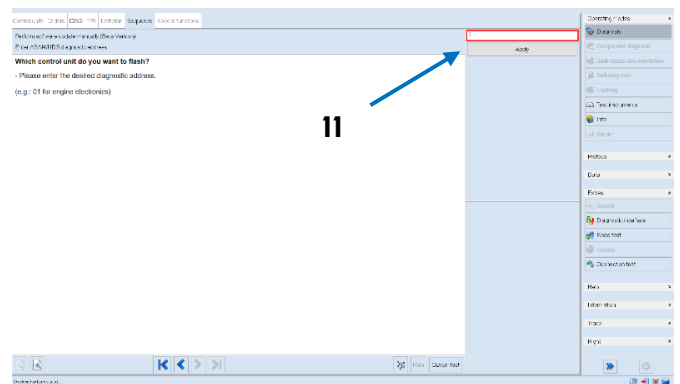
7. If the steps are successful, the function Update programming (Beta Version) will appear in the Test plan. Click now on the Update programming (Beta Version) function and then “Perform test”.



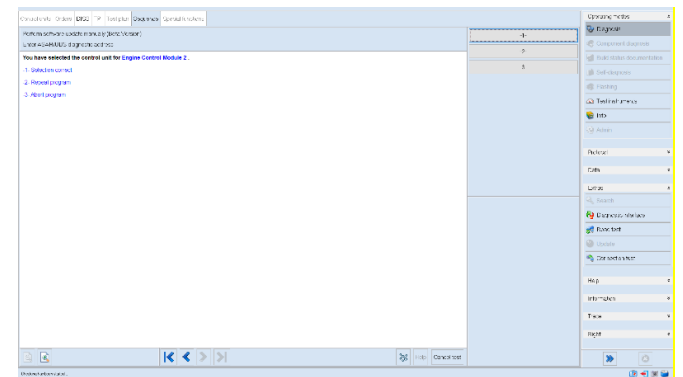
8. Select the control unit type to flash. In this select option “- 1. -”, “ASAM/UDS”.



9. Specify the control unit Diagnostic Address and then click on “Apply” box. In this case insert “11”.

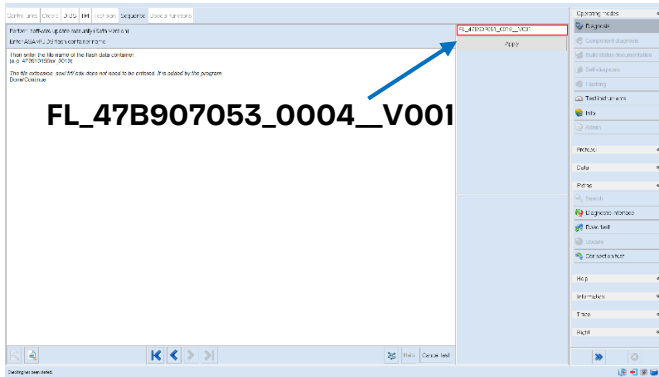


10. Click on “- 1. -” if the selection is correct, otherwise click “- 2. -” for repeat program or “- 3. -” for abort program.

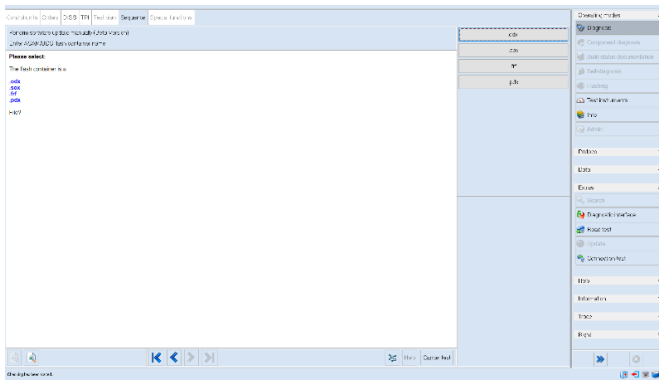




11. Insert the name
“FL_47B907053_0004_V001”



12. Select the extension of the file “.pdx”.



At the end of the update, O.D.I.S. Service will show some data about control unit software version. Please check that the **ECU 0011 SW version is 0004**.

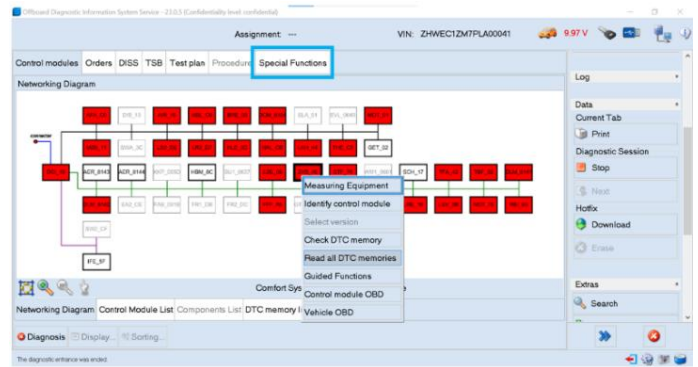
111. SVM update and configuration



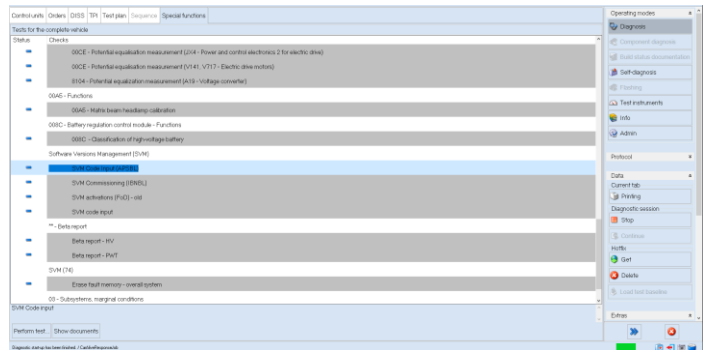
IMPORTANT:

Improper use of this function can cause damage to the ECUs.

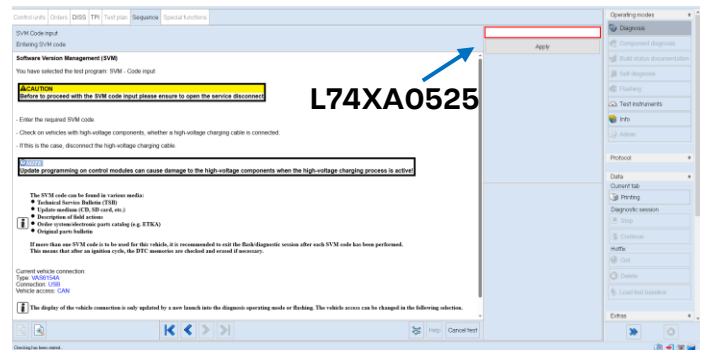
13. To start the procedure to execute an SVM code, select the “Special functions” tab in O.D.I.S. Service.



14. Click on “SVM- Code input (APSBL)” and then on “Perform test”.

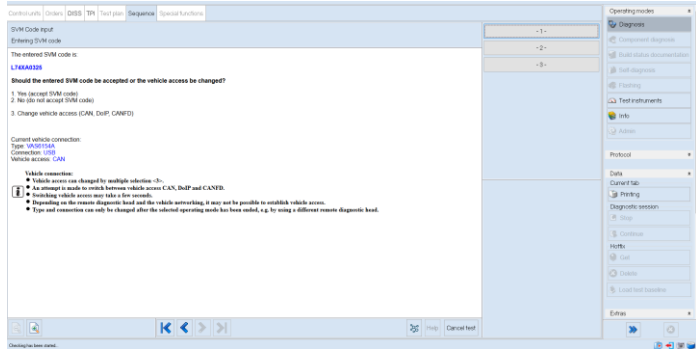


15. Enter the code “L74XA0525” in the appropriate space at the top right and click “Adopt”.





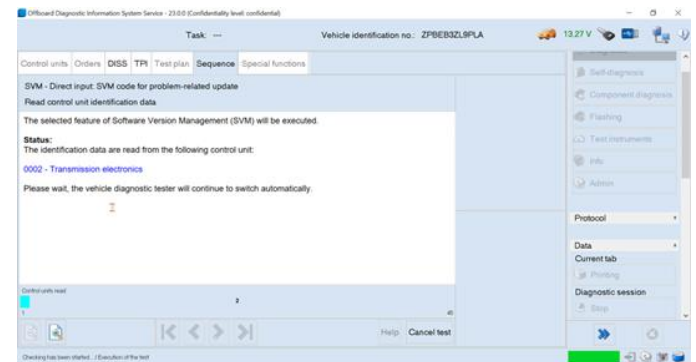
16. The SVM code entered is again displayed in the dialog box. If the entered code is correct, click on “Yes”. Otherwise click on “No” to cancel the SVM procedure.



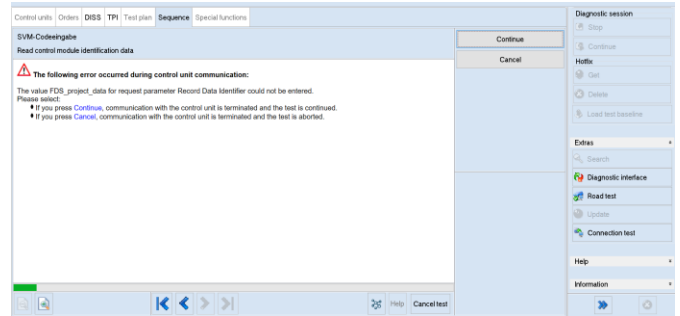
17. Wait for data to be acquired from all the control units. This operation requires a few minutes.



18. The SVM function will automatically continue with identification of the control units in the vehicle.



19. If the following error screen is displayed, the error does not indicate an issue, please press “Continue” and continue with the campaign.



20. It might become necessary to perform one or more of the following operations in the SVM procedure:

- Coding;
- Parameterization;
- Calibration;
- SW Update;

21. To perform these actions, it is usually necessary to click on “Finished/Next” where requested and to follow the instructions directly provided on the O.D.I.S. Service dialog screens.

22. After the update, leave the car in sleep for 5 minutes, key off, all doors closed and locked, OBD disconnected.

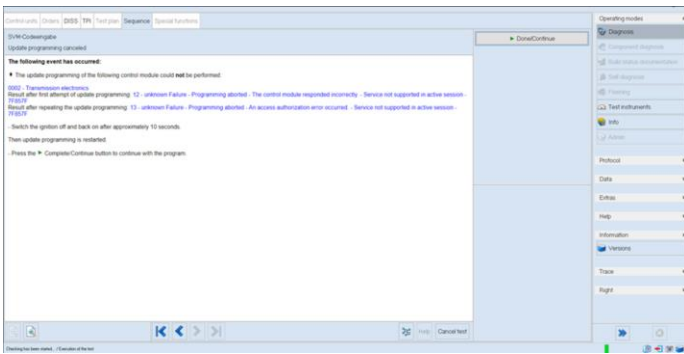


IMPORTANT: Trouble shooting for SVM ERP Error received:

- 8013 -> please contact Technical Support
8088 -> please contact Technical Support
8101 -> please check the correct syntax of SVM code inserted.
8113 -> This error could have several resolutions:

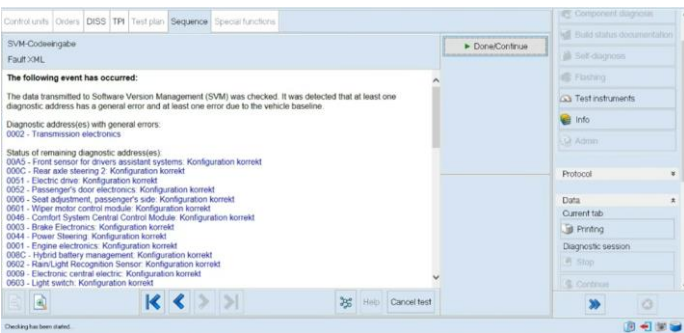
a. If appear only the screen with error 8113, please perform a 12V battery reset and a sleep cycle. Repeat SVM code and contact Technical Support if not resolved.

b. If appear the following screens (ECU02 update failed):



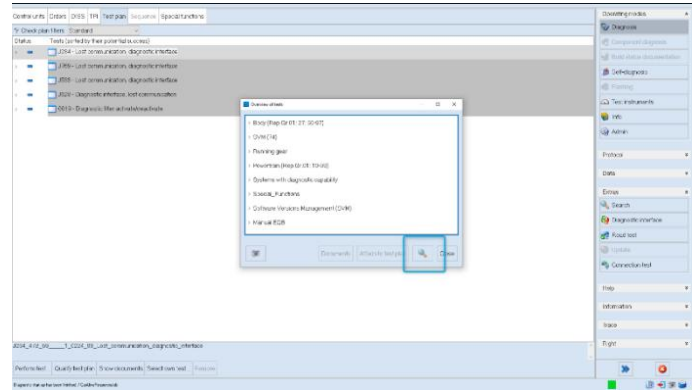
Please, follow the instructions displayed: switch the ignition OFF and back ON after 10 seconds and then click "Done/Continue" to continue.

c. If appear the following screen at the end of the function (ECU02 update failed):

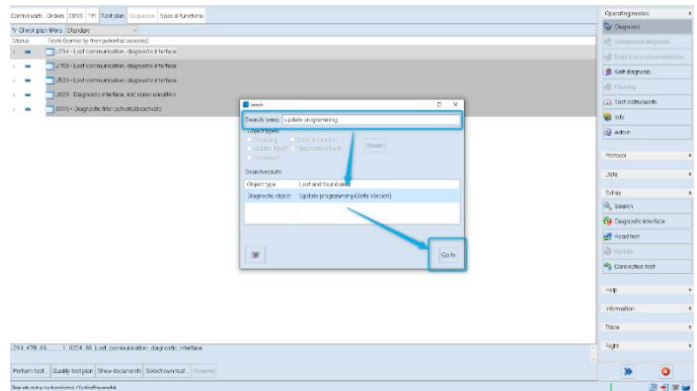


Please, execute the following steps:

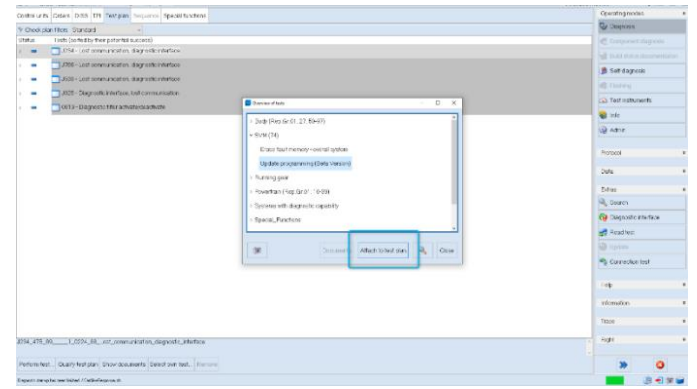
From the "Test plan" menu, click on the "Select own test" box and then click on the magnifying glass:



Enter in the search bar "Update programming". Select the function "Update programming (Beta Version)" and click on "Go to".



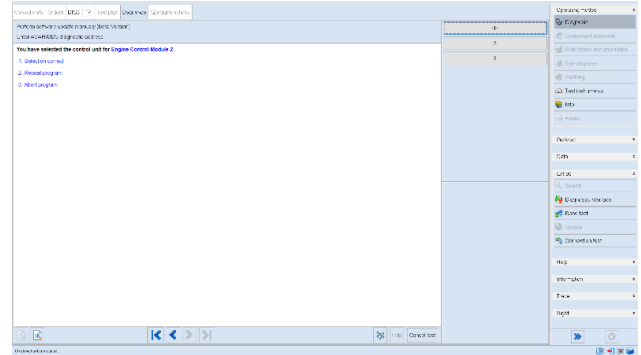
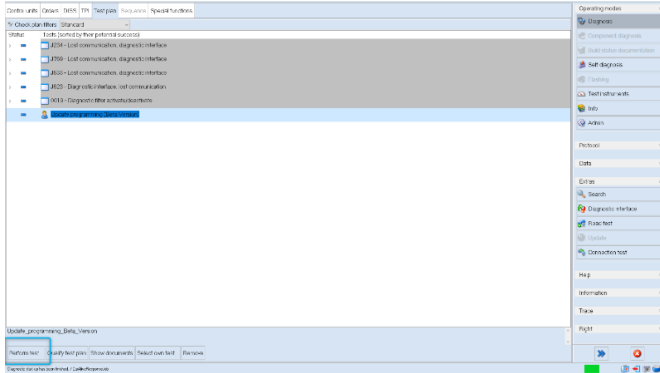
Click on "Attach to test plan".





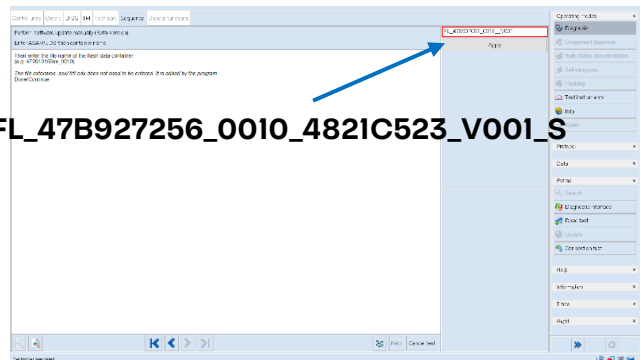
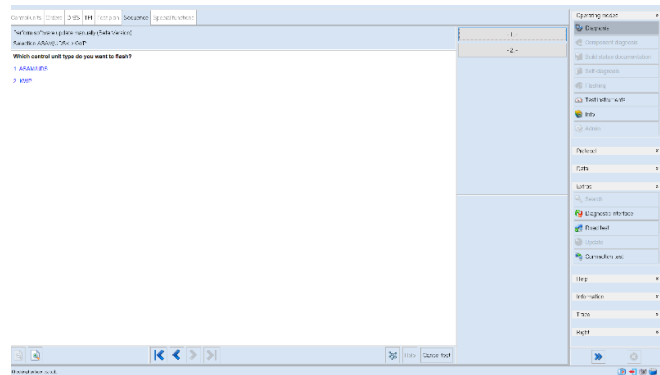
If the steps are successful, the function Update programming (Beta Version)" will appear in the Test plan. Click now on the Update programming (Beta Version)" function and then "Perform test".

Click on "- 1. -" if the selection is correct, otherwise click "- 2. -" for repeat program or "- 3. -" for abort program.



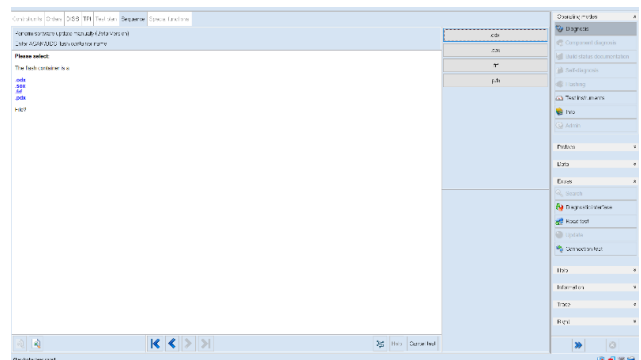
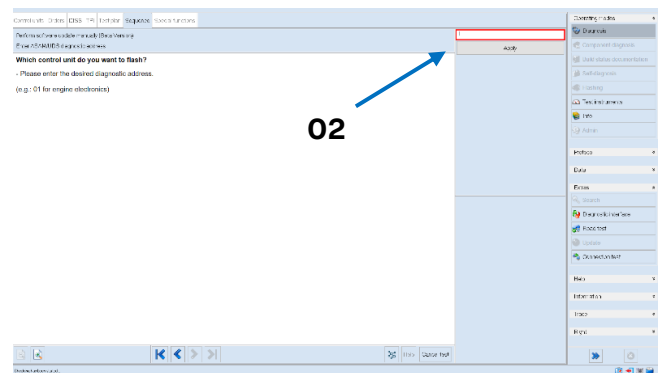
Select the control unit type to flash. In this select option "- 1. -", "ASAM/UDS".

Insert the name "FL_47B927256_0010_4821C523_V001_S".



Specify the control unit Diagnostic Address and then click on "Apply" box. In this case insert "02".

Select the extension of the file ".pdx".

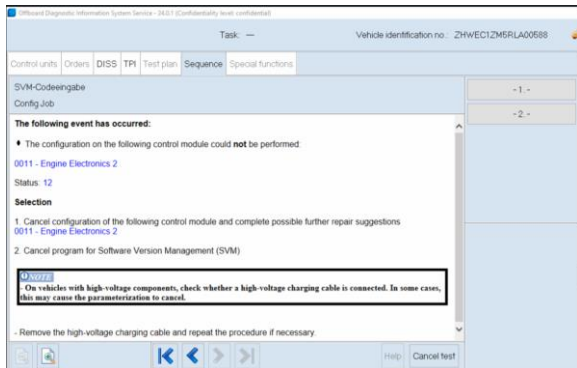


At the end of the update, O.D.I.S. Service will show some data about control unit software version. Please check that the ECU02 SW version is 0010.

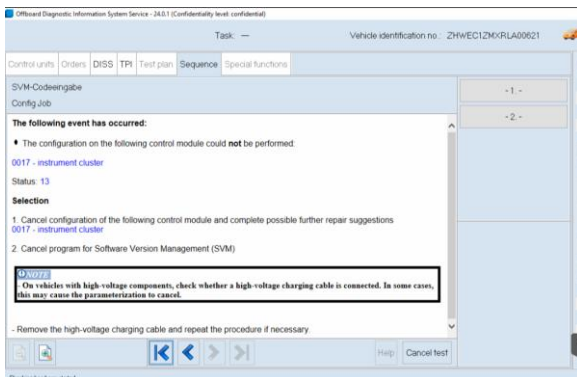
After the update, perform the guided function "SVM - Code input" again (steps from 13 to 22).



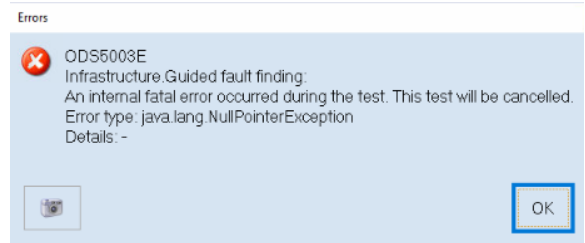
- **8118** → please perform a sleep cycle. Be sure the control unit 5F has been updated to correct software (see previous steps). Check the software level via 5f – control unit identification and compare it to the reference table. Repeat SVM code and contact Technical Support if not resolved.
- **8037** → Please check your O.D.I.S Service version and hotfix as indicated in “Preliminary operation” section.
- **9999** → for the owners of the new D3 Edge Box, please refer to the informative bulletin BL.08.24 to check the correct O.D.I.S Service connection setup.
- **ECU 0011 - Status 12** → the error does not indicate an issue and can be continue with the next step of the campaign. Please, select **option 1** to go ahead.



- **ECU 0017 - Status 13** → the error does not indicate an issue and can be continue with the next step of the campaign. Please, select **option 1** to go ahead



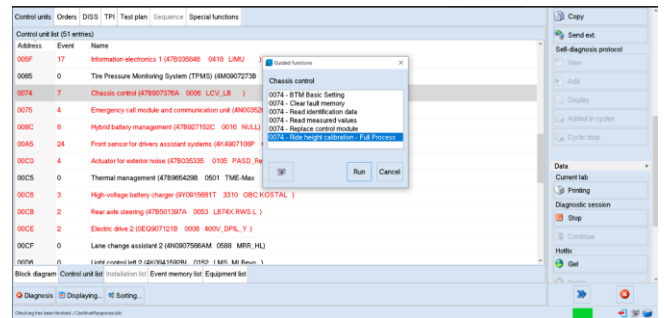
- **ODS5003E** → If the following screen appear please close and repeat the SVM-Code.



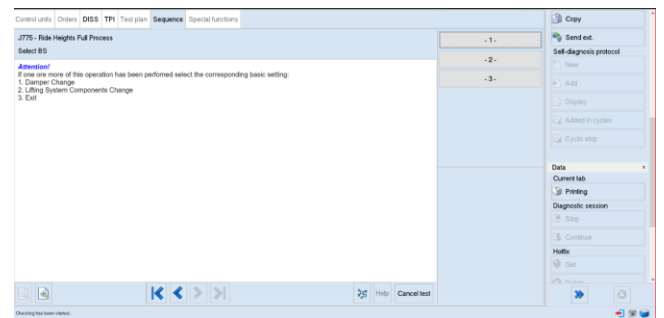
IMPORTANT:
Trouble shooting for DTCs after SVM code:

If during the SVM Code input procedure, the follow errors appear:

- **ECU0074 → C10C500: Basic setting (deflected) not performed:** please, from the ECU 0074, execute the guided function “74 - Ride hide full process”



Then click on basic setting “2 - Lifting system ” and follow the instructions directly from the O.D.I.S. Service.





• **ECU00C5 → U020600: Lost Communication with folding top control module**

Click on “Attach to test plan”.

Address: 00C5 System name: Thermal management Log variant: UDSISOTP (Ereignisse: 1)

Identification:

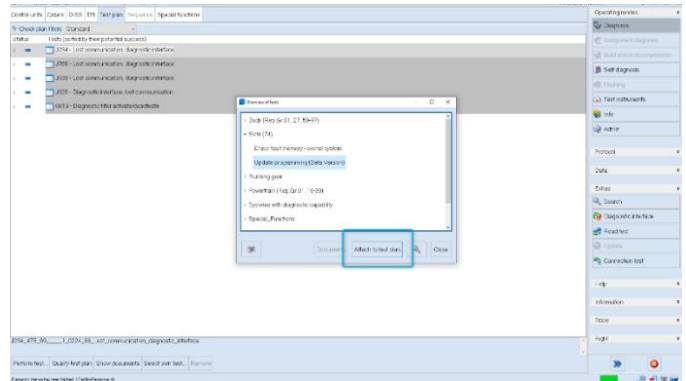
Subsystems:

Entries in event memory (Data source: Vehicle):

Entries in event memory	
Number	U020600: Lost Communication With Folding Top Control Module
Error type 2:	active/static
Symptom:	36930
Status:	10101111

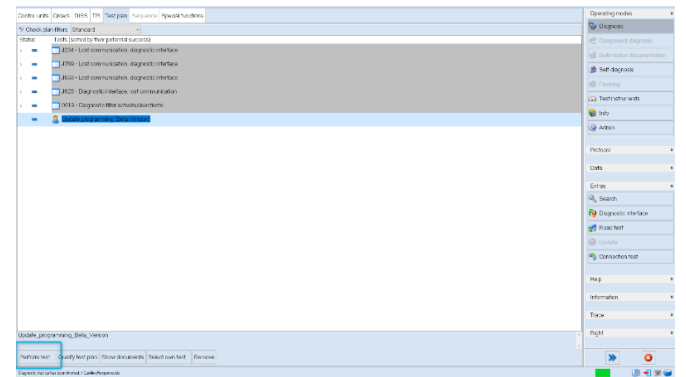
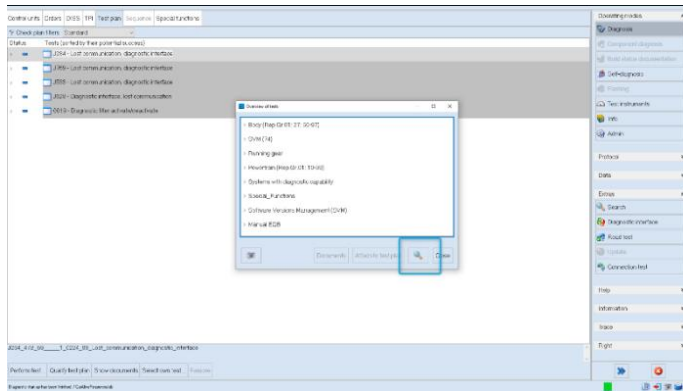
Standard ambient conditions:

Extended ambient conditions:



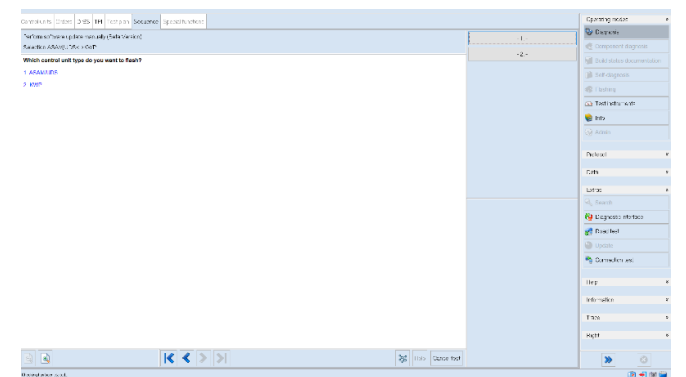
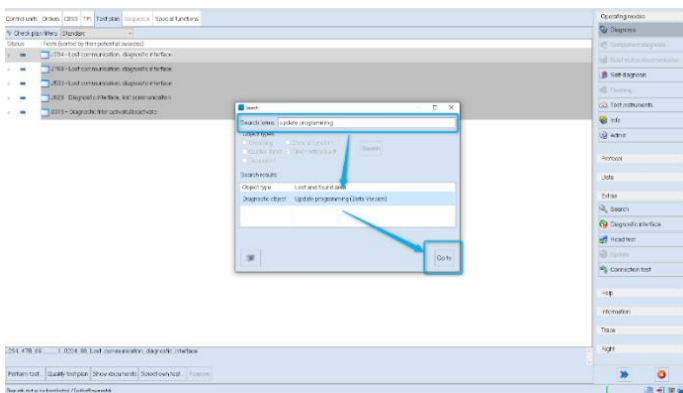
From the "Test plan" menu. Click on the "Select own test" box and then click on the magnifying glass:

If the steps are successful, the function Update programming (Beta Version)" will appear in the Test plan. Click now on the Update programming (Beta Version)" function and then "Perform test".



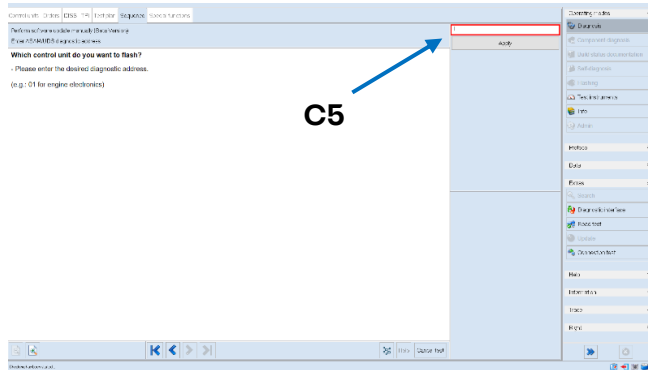
Enter in the search bar “Update programming”. Select the function “Update programming (Beta Version)” and click on “Go to”.

Select the control unit type to flash. In this select option “- 1. -”, “ASAM/UDS”.

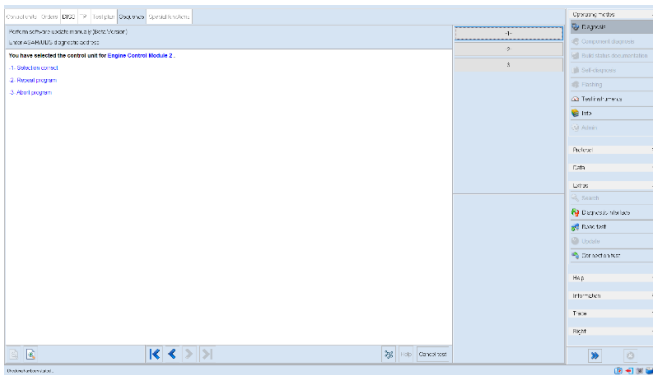




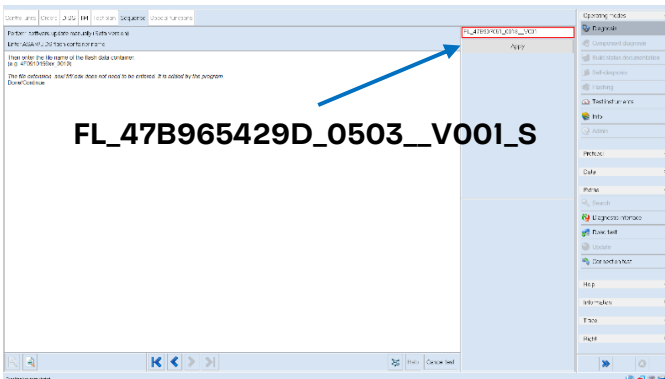
Specify the control unit Diagnostic Address and then click on “Apply” box. In this case insert “C5”.



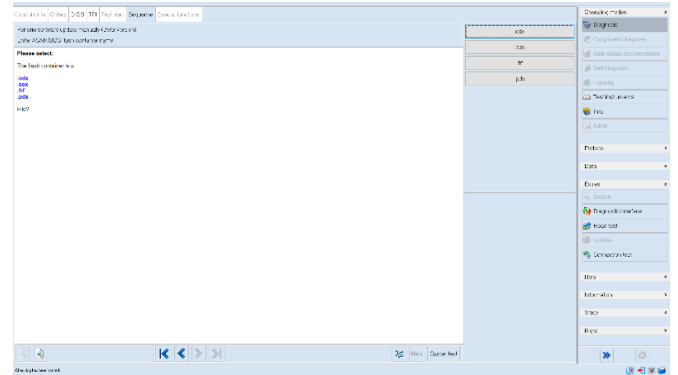
Click on “- 1. -” if the selection is correct, otherwise click “- 2. -” for repeat program or “- 3. -” for abort program.



Insert the name
“FL_47B965429D_0503_V001_S”.



Select the extension of the file “.odx”.



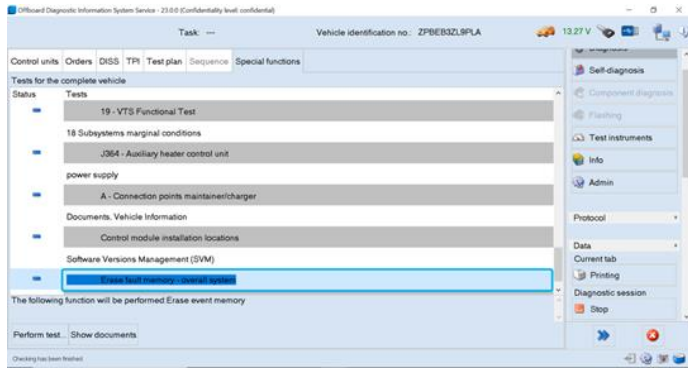
At the end of the update, O.D.I.S. Service will show some data about control unit software version. Please check that the **ECU 00C5 SW version is 0503**.



Final operations:

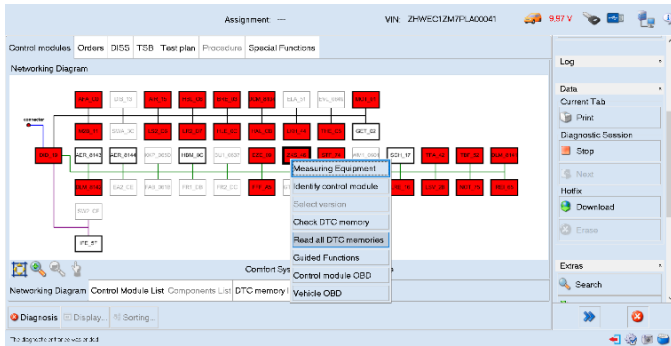
IV. Erase fault memory

23. Select the “Special Functions” card and then “Erase fault memory - overall system” to delete all stored faults.



24. The complete guide for deleting faults is available in the chapter “Reading/cleaning event memory” on app “O.D.I.S. Self Service Guide”, available on Lamborghini HUB portal.

25. Go back to the “Block diagram” card and select “Read all fault memories” from one of the vehicle’s control units to update the display of the faults present after deletion.



IMPORTANT:

Solve any faults still present by performing the functions listed in the “Test plan”. Perform the procedure “IV. Erase fault memory” again until all faults are fully removed from the vehicle’s control units.

/* Diagnosis protocol saving */

26. Save the Diagnostic protocol as described in the chapter “Saving a diagnostic protocol” on app “O.D.I.S. Self Service Guide”, available on Lamborghini HUB portal when the procedure described in this document is completed.

27. For the correct saving of the data after the SW update, it is necessary to close O.D.I.S. Service, start a new diagnostic session and save a new protocol. Both protocols must be attached to the Corresponding Warranty Request in LIASS.



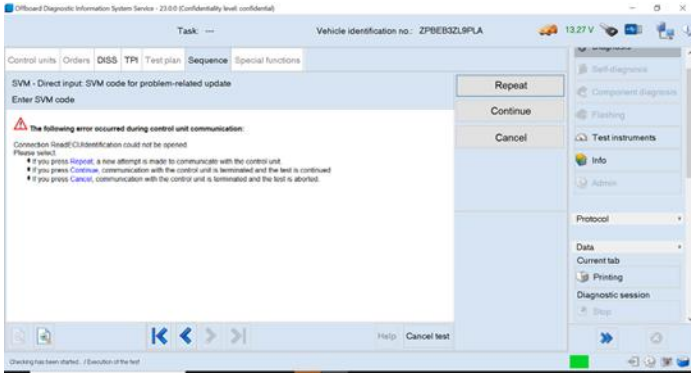
IMPORTANT:

The Diagnostic Protocol must be attached to the Corresponding Warranty Request in LIASS (to enter the request on the web portal, refer to the W.Claim manual which you can consult in the Warranty section of the portal).



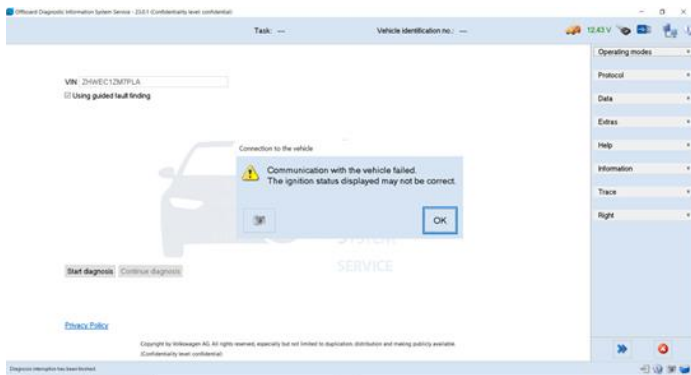
Trouble shooting for generic issues:

A. If the following error screen is displayed, abort the guided function by clicking on “Cancel Test” and contact Technical Support.



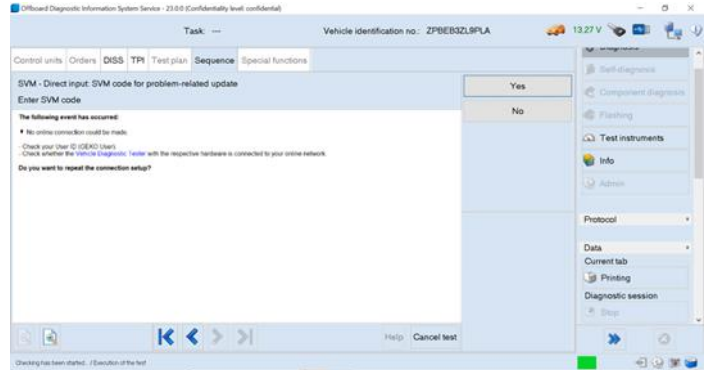
B. If an error is displayed that regards the hardware interface, and the "connection to vehicle" and "key state" icons appear as shown in the figure below:

- Click “Cancel”;
- Repeat installation of the interface VAS6154/6154A/6154B for the instructions in procedure (*) “Checking the VAS 6154”, selecting the right-hand “Extras” menu in O.D.I.S. Service and clicking on the “Diagnostic interface” button.



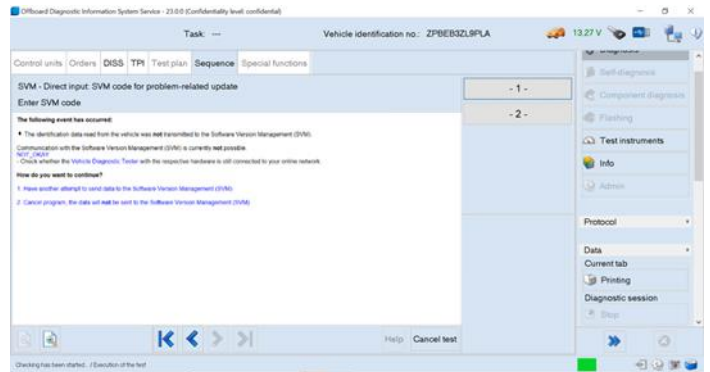
C. If the following connection error is displayed like in the following example screenshots:

- It is not possible to connect to the central server; check that your laptop is correctly connected to the Internet and retry by clicking on “Yes” or “Done/continue”, as appropriate.



D. If the connection is dropped during the target/actual comparison during the SVM procedure:

- It is not possible to connect to the central server; check that your laptop is correctly connected to the Internet and retry by clicking on “I”.





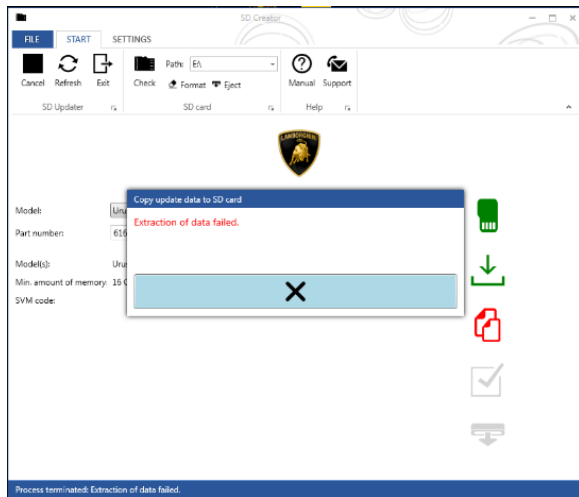
E. If the same error type should reoccur during the application test, try the following procedure:

- Exit O.D.I.S. Service
- Restart O.D.I.S. Service ensuring that:
 1. You have a network connection
 2. The O.D.I.S. Service connection is set to Internet
- Run the connection test again and perform the SVM again.



IMPORTANT:

If the following error should occur, it is necessary to follow the instructions given in BI.25.18 (Rev.02), which can be downloaded on the Lamborghini HUB portal:



N.B.

All O.D.I.S. Service technical documentation can be viewed on the Lamborghini web portal, in the O.D.I.S. Sel Service app.



IMPORTANT:

The documents which must be provided together with the operation under warranty request are:

- *Produced Repair Order*
- *Saved Diagnostic Protocol with BETA report*

Failure to follow these procedures could lead to the request being rejected.

For more information, please contact your Area Manager or open a ticket to Technical Support in Lamborghini KEY (Request – General Information – After Sales Services - After Sales Technical Support).

Regards,
Lamborghini Service