



Technical Service Bulletin

SUBJECT:		NO: TSB-25-54-003REV	
ABNORMAL NOISE FROM DYNAMIC SOUND YAMAHA ULTIMATE 12 SPEAKERS - REVISED		DATE: April 2025	
		MODEL: Outlander	
CIRCULATE TO:	<input type="checkbox"/> GENERAL MANAGER	<input checked="" type="checkbox"/> PARTS MANAGER	<input checked="" type="checkbox"/> TECHNICIAN
<input checked="" type="checkbox"/> SERVICE ADVISOR	<input checked="" type="checkbox"/> SERVICE MANAGER	<input checked="" type="checkbox"/> WARRANTY PROCESSOR	<input type="checkbox"/> SALES MANAGER

This bulletin supersedes TSB-25-54-003 dated March 2025 to add VIN Cut off information. Revisions are italicized and indicated by ◀

PURPOSE

This bulletin provides instructions to reprogram the primary speaker amplifier.

BACKGROUND

A programming issue with the communication setting of the digital audio signal inside the primary speaker amplifier causes the secondary speaker amplifier to not receive the digital audio signal correctly. As a result, the audio signal from the secondary speaker amplifier to the speaker is not outputted correctly and a cracking noise is heard.

AFFECTED VEHICLES

All 2025 Outlander (equipped with Dynamic Sound Yamaha Ultimate 12 Speaker)
VIN Cut off: JA4J4WA89S2026332 (February 28, 2025)



ATTENTION: Dealers must confirm 2025 Outlander is affected based on VIN, symptom, and model. ALL in-stock inventory vehicles should be reprogrammed prior to being sold. If a vehicle has already been sold, please complete reprogramming on a customer complaint basis.

WORK PROCEDURE

Please reprogram the ECU - AUDIO AMP software.

Equipment

The following equipment is needed to reprogram the ECU:

- VCI (Vehicle Communication Interface) or VCI Lite - MB991824 or MB992744
- MEDIC Laptop/Tablet with A/C power adapter - 520924 or FZG1MK2
- MUT-3 Main Harness "A" (blue connector at the DLC end) - MB991910 OR MB992745
- USB 2.0 Cable - MB991827 or MB992747
- MEDIC 3.5/4 update at **913** or higher
- For Standalone MUT-3 units, MUT3-SE Reprogramming Database **SDB N250201NR** or higher

Copyright 2025, Mitsubishi Motors North America, Inc.

The information contained in this bulletin is subject to change. For the latest version of this document, go to the Mitsubishi Dealer Link, MEDIC, or the Mitsubishi Service Information website (www.mitsubishitechinfo.com).

**ATTENTION:**

- Turn off all electrical devices to minimize the vehicle's electrical load. Also use an external power source to ensure that the vehicle auxiliary battery maintains the specified voltage during reprogramming. Low voltage of the auxiliary battery may cause incomplete reprogramming, and damage the ECU.
- Write down all the customer's electrical device settings such as A/C and radio before reprogramming and restore them after reprogramming.
- Connect the MUT-3 to an AC power source to prevent internal battery discharge.
- Before using, make sure the USB cable and MUT-3 main harness are not damaged.
- Do not perform maintenance work in the engine compartment during reprogramming. If the connection between the engine ECU and ETACS is lost, the cooling fan operates a fail-safe.
- Check the "All DTC" after reprogramming and erase them (if any).

CAUTION

DO NOT DISTURB THE HARNESS CABLES OR CONNECTIONS DURING THE REPROGRAMMING PROCESS AS IT COULD CAUSE THE CONTROL UNIT TO LOSE DATA. IF THE USB CABLE IS DISCONNECTED DURING THIS PROCEDURE, A WARNING MESSAGE WILL DISPLAY.

NOTE: Due to limited space in the engine compartment it may be easiest to connect battery charger cable onto ground point.

Place the push-button switch in the "ON" position.

**Reprogramming Chart**

Model	Data No.	New HW Part No.	New SW Part No./Ver.	Target HW Part No.	Target SW Part No./Ver.	Remarks
Outlander	2830W00.1PN	28061W002P	283C0W001P	28061W002P	283C0W000P	-

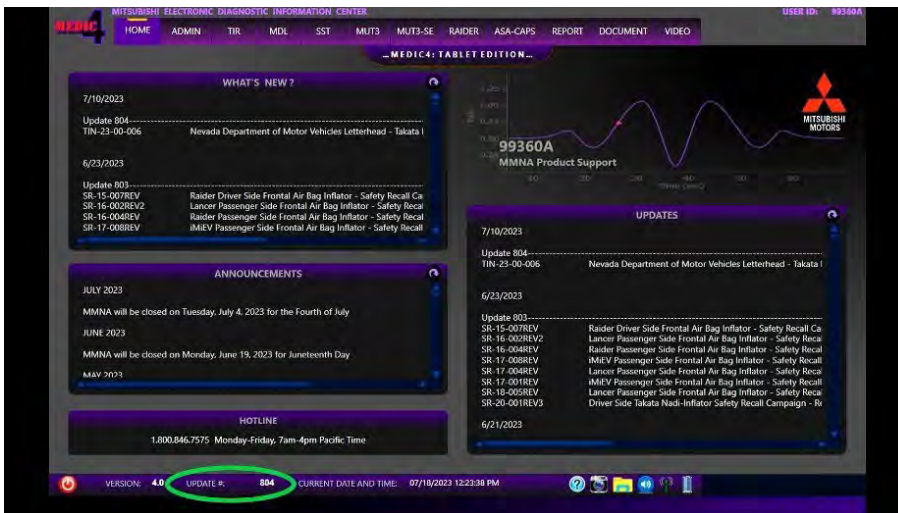
SOFTWARE/MEDIC VERSION VERIFICATION PROCEDURE

1. Verify that the ECU-AUDIO AMP has not already been updated to the latest S/W number in the chart above. If the ECU software is at the latest level, reprogramming is not necessary.

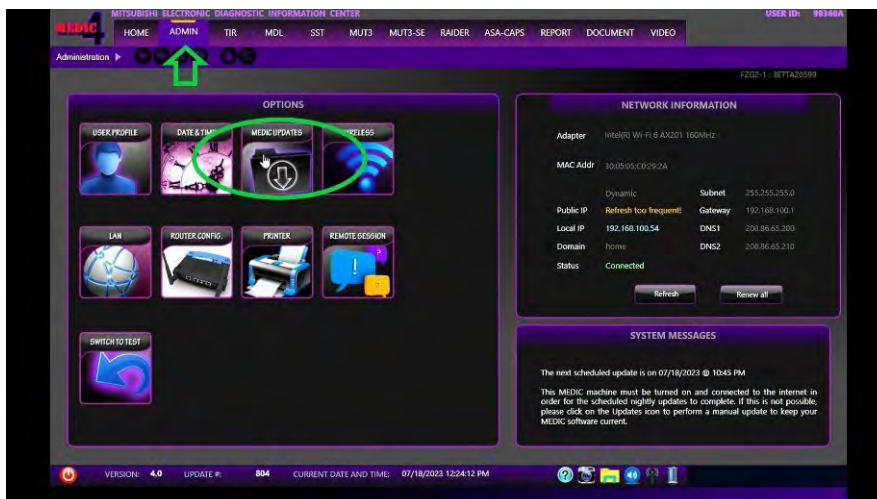
NOTE: Reprogramming the ECU-AUDIO AMP with the latest database (e.g., **SDB N250201NR**) includes all past and current reprogramming for TSBs of affected vehicles. It is not necessary to reprogram the ECU for each previous TSB.

For MEDIC 3.5/4 users only: (MUT-3 STV users go to step 5)

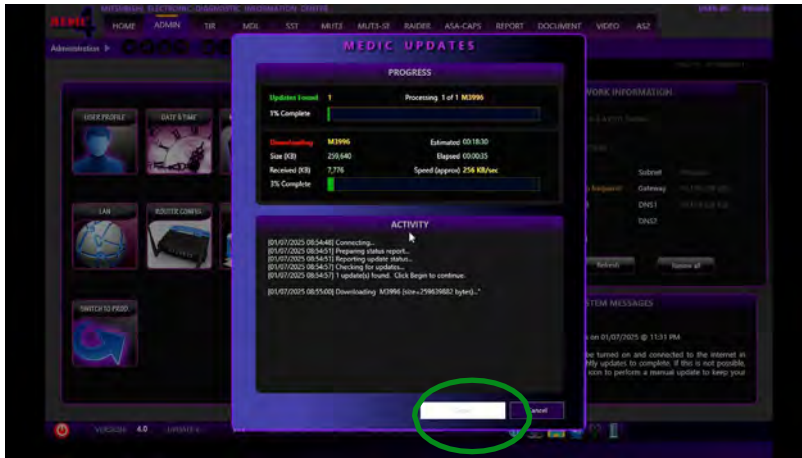
2. Verify the MEDIC 3.5/4 is at version 3.5 and at update **913** or higher. If your **MEDIC 3.5/4 update is at least 913**, continue with the Reprogramming Procedure. If your **MEDIC 3.5/4 update is below 913**, update your MEDIC as follows:



3. Select the MEDIC 3.5/4 Admin tab and click on "Updates".

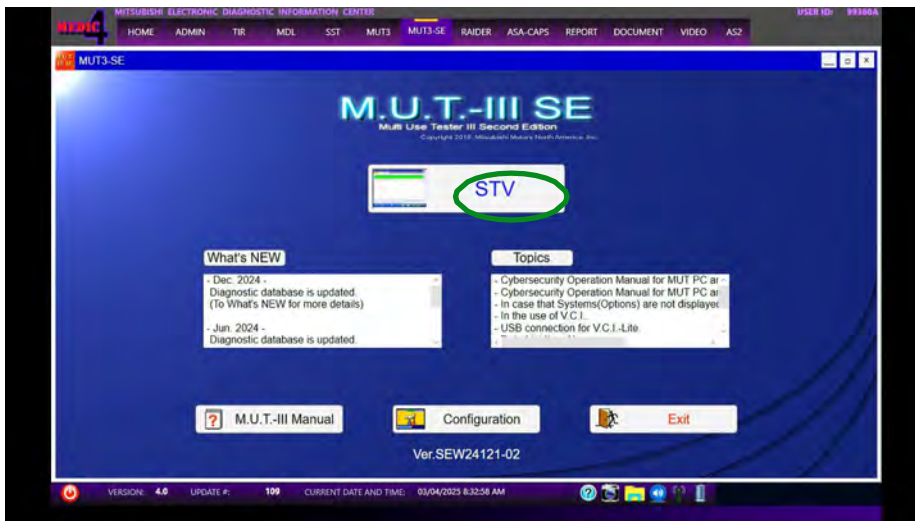


4. If the MEDIC update screen advises updates are available, click the "Begin" button. After all updates are complete, **GO TO THE REPROGRAMMING PROCEDURE.**



5. STANDALONE MUT-3 SE SCAN TOOL VIEWER (STV) ONLY: (MEDIC 3.5 USERS – GO TO THE REPROGRAMMING PROCEDURE). Verify that your MUT-3 SE has the most current version of the reprogramming database from the MUT-3 SE Main Page.

- a. Press the STV button.



REPROGRAMMING PROCEDURE

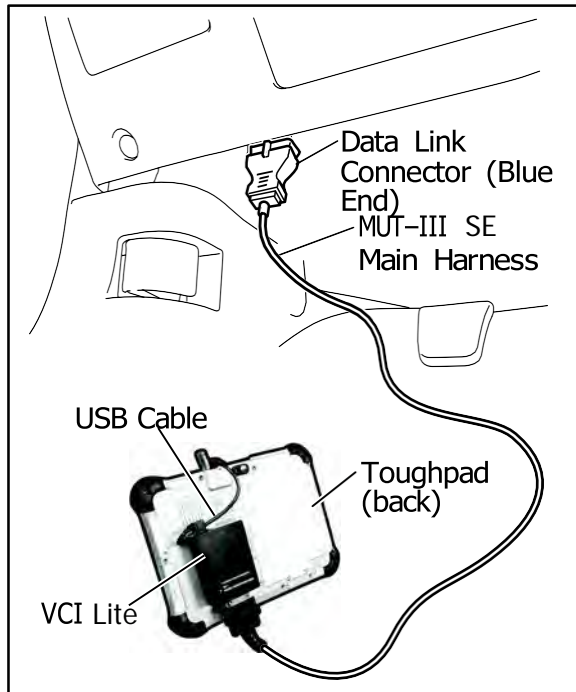


To ensure that the vehicle battery maintains 12V during the procedure, connect a battery charger to the vehicle during the procedure.

NOTE: VCI Stand-alone reprogramming is not available for this procedure. The laptop/tablet and the VCI must remain connected for the entire procedure.

1. Connect the equipment as follows:

NOTE: VCI Lite and MEDIC 4.0 Toughpad shown for illustration purposes only.



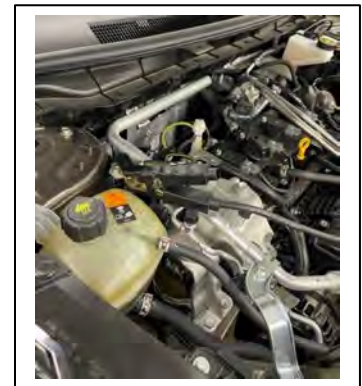
- Turn the MEDIC PC/tablet on. If the battery indicator in the lower right hand corner of the screen does not show a full charge, it is recommended that either the battery be charged prior to beginning or the tablet should be used with the A/C power adapter connected.
- Connect the USB cable to the VCI/VCI Lite. When the laptop/tablet displays the MUT-III SE main screen, connect the USB cable to the device.
- Connect the MUT-3 SE main harness with the blue DLC connection to the VCI/VCI Lite. Connect the blue connection of the MUT-3 SE main harness to the vehicle's data link connector.
- For VCI only (p/n MB991824): Turn the VCI power switch ON. Verify that the indicator lamp in the upper right corner of the screen is green.



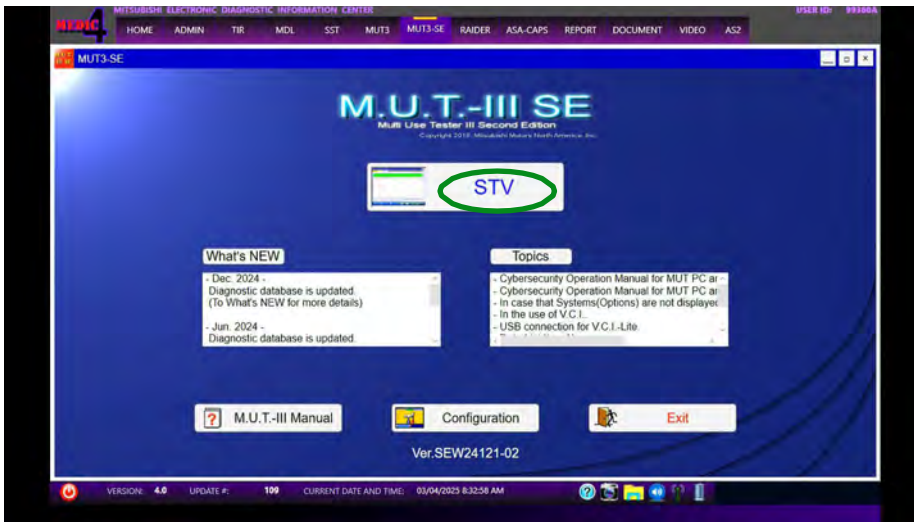
DO NOT DISTURB THE HARNESS CABLES OR CONNECTIONS DURING THE REPROGRAMMING PROCESS AS IT COULD CAUSE THE CONTROL UNIT TO LOSE DATA. IF THE USB CABLE IS DISCONNECTED DURING THIS PROCEDURE, A WARNING MESSAGE WILL DISPLAY.

NOTE: Due to limited space in the engine compartment it may be easiest to connect battery charger cable onto ground point.

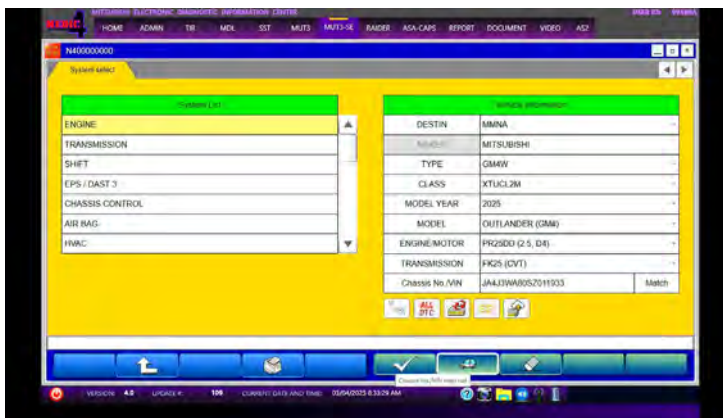
2. Place the push-button switch in the "ON" position.



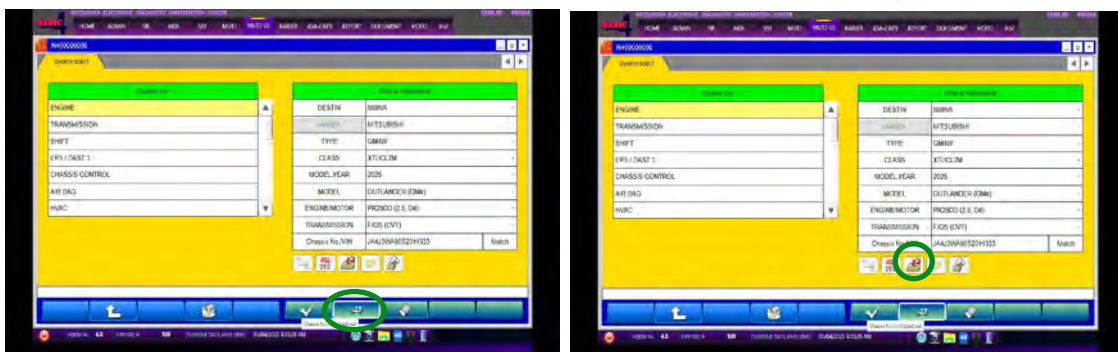
3. Turn on flashers to prevent vehicle from shutting/powering down.
4. Press the "STV" button.



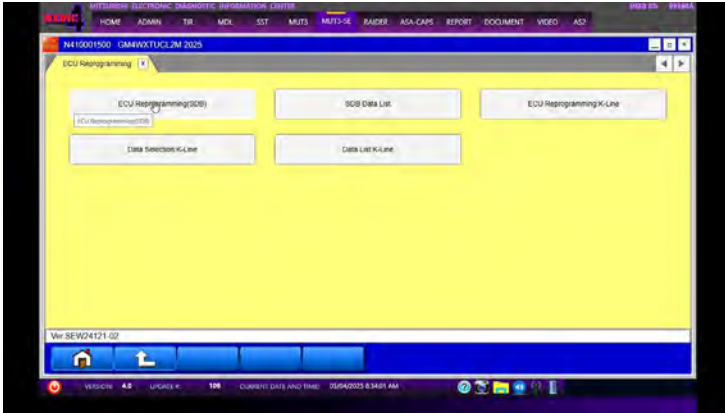
- a. Press the "car icon" for Chassis No/VIN read out.



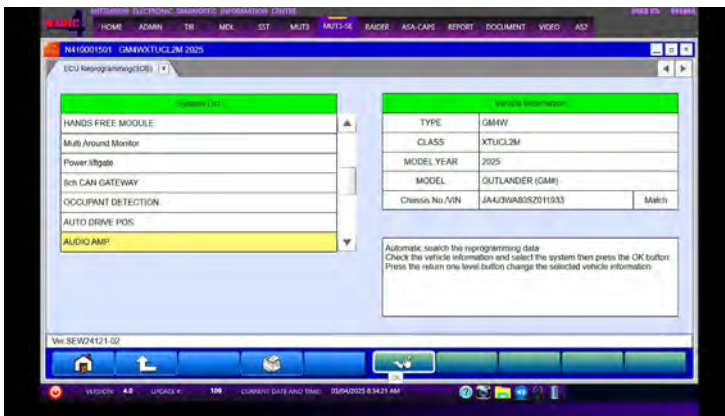
- b. Confirm the vehicle information displayed is complete/correct. The class can be found on the B pillar. Press the "OK" button then press the "programming" button.



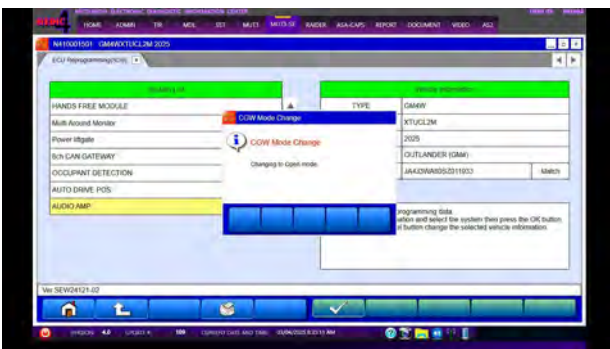
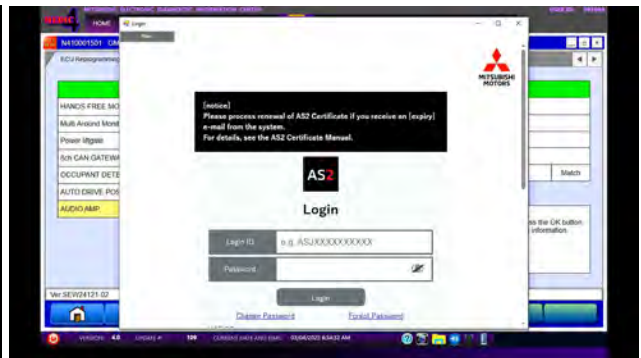
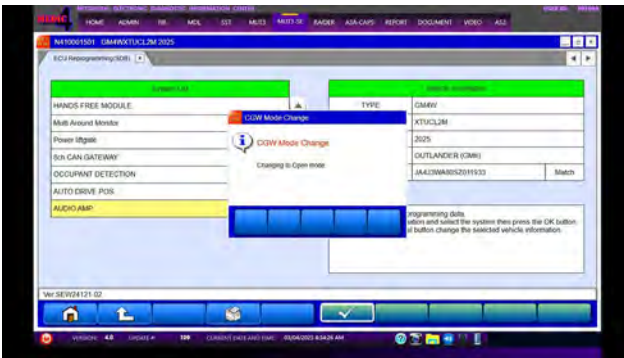
c. Press the "ECU Reprogramming (SDB) button.



d. Choose "AUDIO AMP" from the System List and press the "OK" button.



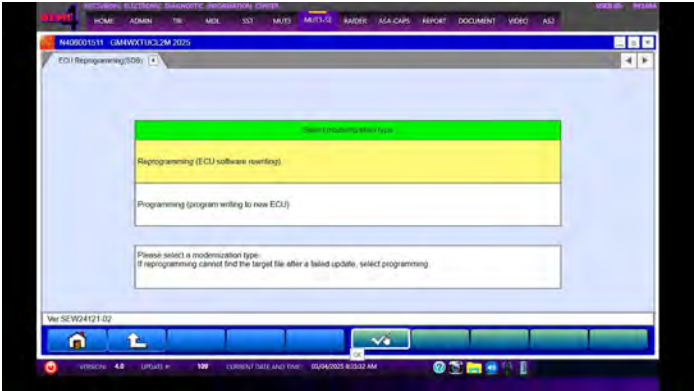
e. CGW Mode Change will appear. Login to AS2. CGW Mode Change will appear again.



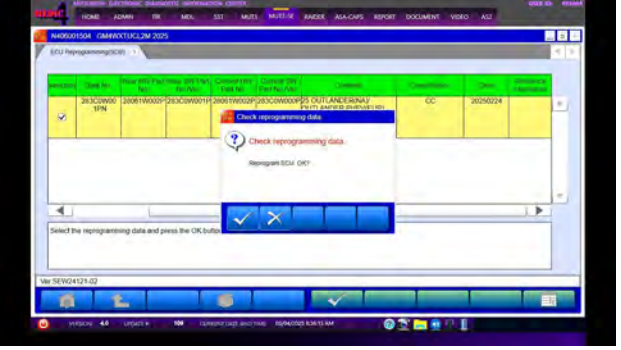
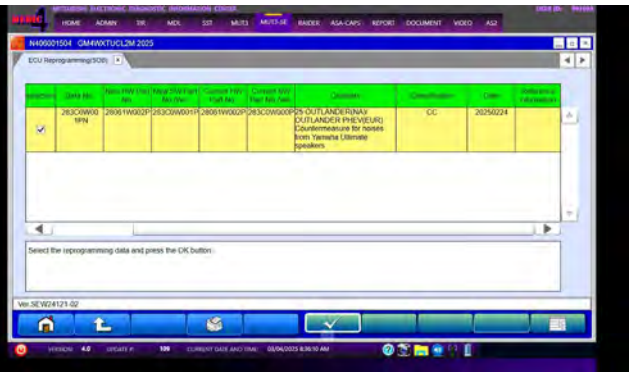


DO NOT DISTURB THE HARNESS CABLES OR CONNECTIONS DURING THE REPROGRAMMING PROCESS AS IT COULD CAUSE THE CONTROL UNIT TO LOSE DATA. IF THE USB CABLE IS DISCONNECTED DURING THIS PROCEDURE, A WARNING MESSAGE WILL DISPLAY.

f. Press the "Reprogramming (ECU software rewriting)" button and press "OK" button.



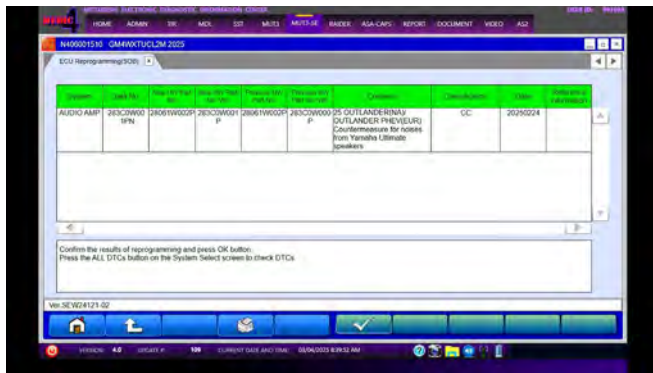
g. Click in the "selection" box and verify the software. Press the "OK" button.



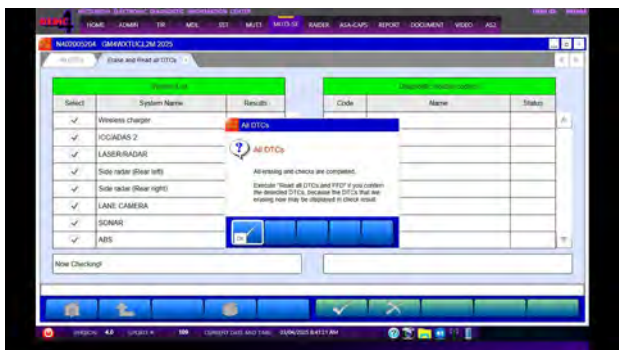
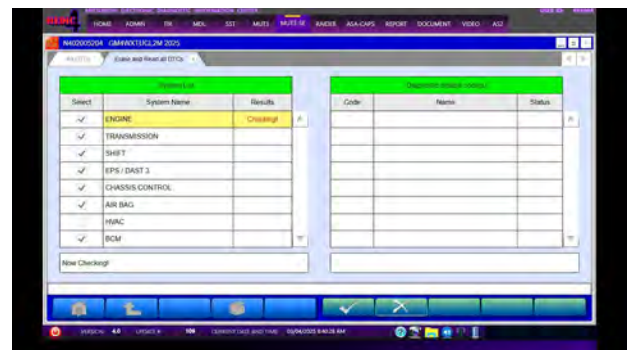
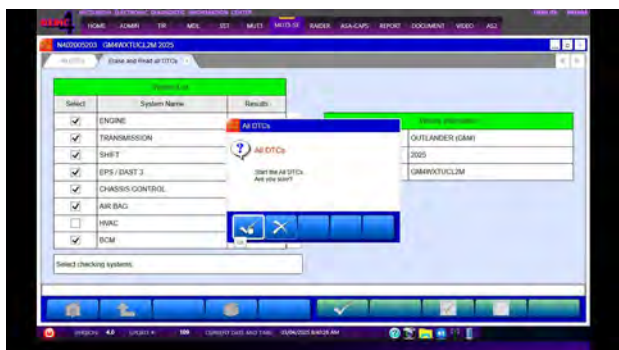
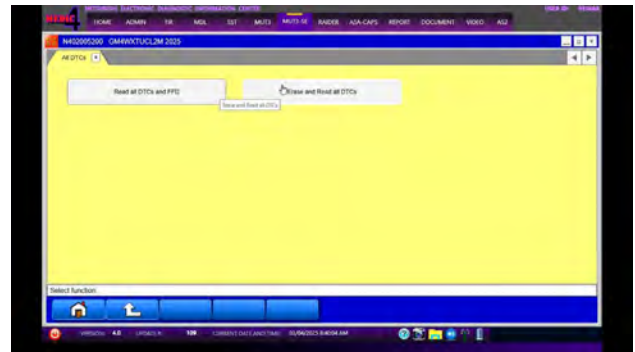
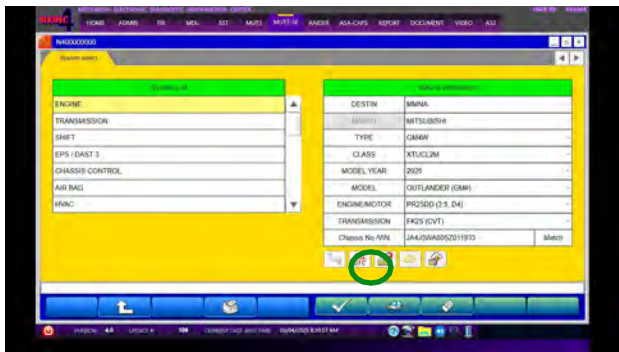
Reprogramming Chart

Model	Data No.	New HW Part No.	New SW Part No./Ver.	Target HW Part No.	Target SW Part No./Ver.	Remarks
Outlander	2830W00.1PN	28061W002P	283C0W001P	28061W002P	283C0W000P	-

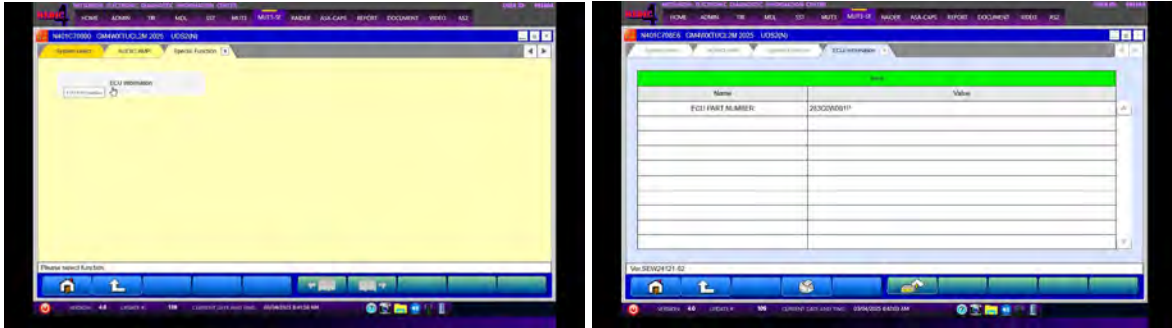
- h. Confirm the reprogramming results and press the "OK" button. Press the ALL DTCs button on the System Select screen to check DTCs. Press the "OK" button to begin.



- i. Place the push-button switch in the "OFF" position for 10 seconds. Then place the push-button ignition switch back to the "ON" position.
- j. Press the ALL DTCs button on the System Select screen to check DTCs. Press the "OK" button to begin.



- k. Choose AUDIO AMP from the System List and press the "OK" button. Then confirm the ECU part number 283C0W001P.



5. Test drive the vehicle to confirm proper operation and restore all customer presets if necessary.

WARRANTY

This bulletin is supplied as technical information only and is not an authorization to repair. If an affected vehicle is reported with the described condition, diagnose the condition, repair as described in this bulletin and submit a normal warranty claim using the information below.

Operation Code	Operation	Cause Code A	Nature Code B	Nature Code C	Quantity	Work Time
B0060310	Reprogram (in stock vehicles)	990	59	0	1	0.3 H
545034UY	Reprogram (sold vehicles)	990	59	0	1	0.3 H