

<b>REFERENCE:</b>	<b>TSB:</b> 09-010-25 <b>GROUP:</b> 09 - Engine	<b>Date:</b>	April 30, 2025	<b>REVISION:</b>	—	
<b>VEHICLES AFFECTED:</b>	<b>2015 - 2018 (BU) Jeep Renegade</b> <b>2016 - 2018 (FB) FIAT 500X</b> <b>2015 - 2018 (VM) RAM ProMaster City</b> <b>This bulletin applies to the following vehicles equipped with a 2.4L I4 Multiair Engine (Sales Code ED6) or a 2.4L I4 PZEV Multiair Engine (Sales Code ED8):</b> <ul style="list-style-type: none"> <li>BU vehicles built on or after October 20, 2014 (MDH 1020XX) and on or before December 03, 2018 (MDH 1203XX).</li> <li>FB vehicles built on or after January 15, 2015 (MDH 0115XX) and on or before July 27, 2018 (MDH 0727XX).</li> <li>VM vehicles built on or after August 14, 2014 (MDH 0814XX) and on or before September 15, 2018 (MDH 0915XX).</li> </ul>			<b>MARKET APPLICABILITY:</b> <input checked="" type="checkbox"/> NA <input type="checkbox"/> MEA <input type="checkbox"/> SA <input type="checkbox"/> IAP <input type="checkbox"/> EE <input type="checkbox"/> CH <b>NOTE: This TSB covers Canada and Mexico.</b>		
<b>CUSTOMER SYMPTOM:</b>	<b>The customer may describe one or more of the following:</b> <ul style="list-style-type: none"> <li>Oil pressure low indicator lamp illumination between oil changes.</li> <li>Excessive oil consumption.</li> </ul>					
<b>CAUSE:</b>	Interactive deceleration fuel shut off calibration					

#### REPAIR SUMMARY:

This bulletin involves performing an oil consumption verification test and possibly replacing the long block.

#### CLAIMS DATA:

Labor Operation No:	Labor Description	Skill Category	Labor Time
09-00-00-9C	Oil Consumption Test (0 - Introduction)	1 - Engine Repair and Performance	0.5 Hrs.
09-01-70-9G	Long Block, 2.4-Liter Multiair Engine - Replace <b>(VM Models Only)</b> (3 - Highly Skilled)	1 - Engine Repair and Performance	9.3 Hrs.
09-01-70-9H	Long Block, 2.4-Liter Multiair Engine - Replace <b>(BU/FB Models Only)</b> (3 - Highly Skilled)	1 - Engine Repair and Performance	7.6 Hrs.
Failure Code	ZZ	Service Action	

**RELATED LOPS:**

Labor Operation No:	Labor Description	Skill Category	Labor Time
09-01-70-60	4x4/AWD Equipped BU Vehicles (3 - Highly Skilled)	1 - Engine Repair and Performance	0.3 Hrs.
07-FF-01-50	Drain and Fill BU Vehicles (3 - Highly Skilled)	1 - Engine Repair and Performance	0.7 Hrs.
09-01-70-60	4x4/AWD Equipped FB Vehicles (3 - Highly Skilled)	4 - Chassis Systems	0.4 Hrs.

**SPARE PARTS:**

Qty	Part No.	Description	Notes
1 (AR)	68641992AA	2.4L Long Block (Kit)	
1 (AR)	CCSKW802AA	2.4L Long Block Miscellaneous Parts (Kit)	
(AR)	68163848AB	1 Gallon Bottle, Antifreeze (MSQ 4), MS-12106, MS-90032	
(AR)	68088485AB	1 Pint Bottle, Fluid, Power Steering (MSQ 6) MS-11655	
(AR)	68523994AA	1 Quart Bottle, Oil, Engine SAE 0W-20 (MSQ 6) MS-6395	

**DIAGNOSIS:**

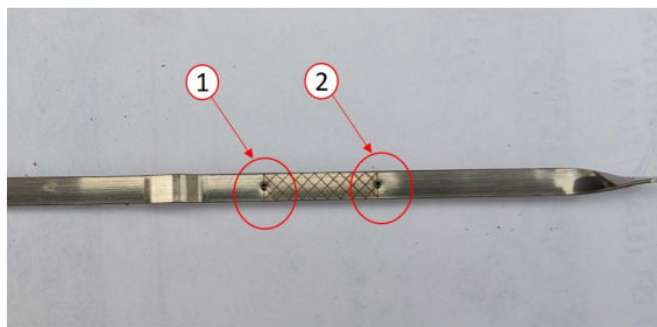
If the customer describes the symptom/condition listed above, perform the 2.4L Engine Oil Consumption Test Procedure below.

**The following Engine Oil Consumption Test is used to determine the source of excessive internal oil consumption.**

**NOTE: A few drops of external oil leakage per km/mi, can quickly account for the loss of one quart of oil in a few hundred km/mi. Ensure no external engine oil leaks are present. Oil leakage is not the same as oil consumption and all external leakage must be eliminated before any action can be taken to verify and/or correct oil consumption complaints.**

1. Verify no external engine oil leaks are present.
2. Are any external engine oil leaks present?
  - YES >>> This bulletin does not apply. Normal diagnosis should be performed and all external oil leaks should be repaired before performing the Engine Oil Consumption Test.
  - NO >>> Proceed to [Step 3](#).

3. Ensure the test vehicle has a minimum of 2,400 km (1,500 mi) until the next oil change is required. If the vehicle does not have 2,400 km (1,500 mi) wait until the scheduled oil change to start the test.
4. Check the oil level at least five minutes after a hot shutdown with the vehicle on a level surface.
5. Ensure the oil level is at the "FULL" mark, if necessary top off the oil to the "FULL" mark on the dipstick [Fig. 1](#).



**Fig. 1**  
Oil Dipstick Levels

1 - "FULL" Level Mark  
2 - "ADD" Level Mark

---

**NOTE: The use of a black light marking device is recommended so the marks can only be seen with a ultraviolet light.**

6. Tamper proof the oil pan drain plug, oil filter, dipstick and oil fill cap with a black light marking device (pen), paint pen or touch-up paint.
7. Record the vehicle mileage. Note the oil level is at the 'full' [Fig. 1](#) five minutes after hot shut down and date.
8. Instruct the customer to drive the vehicle as usual.

**NOTE: Failure to confirm the oil level between 2,400 - 2,700 km (1,500 - 1,700 mi) voids the test and requires a new test to be performed.**

9. Require the customer to return to the servicing dealer after accumulating between 2,400 - 2,700 km (1,500 - 1,700 mi).
10. Return the vehicle back to the customer for the 2,400 - 2,700 km (1,500 - 1,700 mi) test drive. This bulletin has been completed, use the LOP (09-00-00-9C) to close the bulletin. No further action is needed at this time.
11. When the vehicle returns for the remaining steps, verify that no evidence of tampering has happened.
12. Check the oil level at least five minutes after a hot shutdown on a level surface. If the oil level is at or above the "ADD" mark, the engine is in an acceptable condition and no further service action required [Fig. 1](#).

**NOTE: If the oil level is below the "ADD" mark [Fig. 1](#), proceed to [Step 1](#) of the Repair Procedure. No Powertrain Service Center replacement approval is needed.**

#### REPAIR PROCEDURE:

1. Did the vehicle fail the **2.4L Engine Oil Consumption Test**?
  - YES >>> Proceed to [Step 2](#).
  - NO >>> This bulletin has been completed.
2. Replace the long block. Refer to the detailed service procedures available in DealerCONNECT/Service Library under: Service Info>09 - Engine, 2.4L Multiair / Removal and Installation.

## POLICY:

Warranty Extension to extend the current warranty period of 3-years / 60,000 kilometers to 7-Years / unlimited kilometers from vehicles in-service date. For vehicles already out of the 7-year warranty period, it will be extended to 1-year from the official launch date of the warranty bulletin. See Warranty Bulletins: Canada SAB 2025-16 and Mexico CS-22-26, for details associated with the Warranty Extension.

*This bulletin is supplied as technical information only and is not an authorization for repair. No part of this publication may be reproduced, stored in a retrieval system, or transmitted, in any form or by any means, electronic, mechanical, photocopying, or otherwise, without written permission of FCA US LLC.*