



Service Bulletin 635 Issue 1 - 04.2025

Subject: Instruments Replacement			
Bulletin Number	Models Affected	VIN Range	Markets Affected
635	Bonneville T100	From VIN CH2980 to CK5128	Japan, Germany, United Kingdom, Brazil, France, Spain, United States of America, Italy, Sweden, Thailand, Poland, China, Korea, Australia, Vietnam, Malaysia, Canada, Hungary, Greece, New Zealand, Netherlands, Taiwan, Philippines, Belgium, South Africa and India.
	Bonneville T120		
	Bonneville T120 Black		

Background Information

Instruments on these motorcycles have been supplied with an incorrect software bootloader, meaning they cannot be unlocked in dealerships with TDT. Dealers are required to replace the instruments to complete the PDI process.

NOTICE

This Service Bulletin will require you to manually enter the part numbers relevant to the repair. You MUST follow the steps outlined in this document to correctly process this Service Bulletin.

Customer Contact Instructions

Motorcycles in the affected VIN range must have this Service Bulletin completed prior to delivery to the customer.

Identification of Affected Motorcycles

Bonneville T100, Bonneville T120 and Bonneville T120 Black models in the above VIN range.

NOTICE

Some affected motorcycles listed in the VIN range will have been reworked by Triumph prior to their release from the factory.

Unmodified motorcycles can be identified by checking the 'VIN Enquiry' on www.triumphonline.net.

Warranty Claim Instructions

Bulletin Number	Fault Code	Repair Code	Description	Repair Allowance	Time
635	025006935	99635	Remove and replace the instruments	0.15 Hrs	

Genuine Parts Information

Bulletin Number	Part Number	Description	Quantity
635	Refer to EPC via VIN lock	Instruments	1
635	T3332656	M5 x 12 mm encapsulated screw, button.	4

Parts Ordering Instructions

For Triumph Subsidiary and Overseas Distributor dealers using Triumph Warranty On-Line with Parts Auto Ordering Flag switched on:

Order all repair parts by submitting a New Prior through the Warranty On-Line system. Entering the above repair code in a New Prior will not automatically add all the parts required for this Service Bulletin. The Instruments will need to be manually added to the New Prior before it is submitted. The labour time for this Service Bulletin is generated by entering the above repair code in the New Prior.

For Overseas Distributor dealers NOT using Triumph Warranty On-Line or for Overseas Distributor dealers using Triumph Warranty On-Line with Parts Auto Ordering Flag switched off: Orders should be placed using the normal parts ordering procedure.

Genuine Parts Return

Dealer to retain parts for 90 days. All parts must be stored in a secure, non-public accessed area and correctly identified with a completed warranty label. Thereafter, the parts must be rendered unusable prior to scrapping.

Other Instructions

Once completed, please mark the Service Record Book that the requirements of this bulletin have been complied with.

Before returning the motorcycle to the customer, download the latest calibration using the current version of the Triumph diagnostic software to the following:

- Engine electronic control module
- Chassis electronic control module (if fitted)
- Keyless electronic control module (if fitted)
- Suspension electronic control module (if fitted)
- Connectivity module (if fitted)
- Instruments (if applicable).

Warranty Claim Instructions

NOTICE

This Service Bulletin requires that you manually enter the relevant part numbers as described in the process below.

1. Using VIN Enquiry, follow the Create Prior process and select 'Start New Prior' – do not select 'Submit Prior'.

4/14/25, 11:25 AM Triumph Online - Welcome Start New Prior

6 Digit VIN Number
A18239

Full VIN Number
SMT1A22Y0R1A18239

Model
PR1 Tiger 1200 GT Pro (Euro 5a)

Model Year
2022 LKN

Colour
JF Lucerne Blue

Engine Capacity
1160

Build Date
24/03/2022

Build Factory
F5

Registration Date
30/12/2023

Warranty End Date
30/12/2026 **Standard**

Outstanding Service Bulletins

Our records indicate the following service bulletins or safety recalls are outstanding for this VIN. Please check the motorcycle, and arrange to have the relevant remedial work carried out as soon as possible.

Bulletin Name
SB635 RECALL REAR REAR TYRE 30 Days

When this occurred
14/09/09 Tikumgh Branch 15 Internal

Create Prior

Claim Type
SBVJ Service Bulletin / Safety Recall

Odometer
1 Miles
Kilometers
Odometer reading not consistent with previous claim, please check and ensure odometer reading is accurate

Region
0201 Rear Wheel

Area
020120 Rear Tyre/Valve

Fault Code
02012026 SB626 - RECALL REAR TYRE PIRELLI METZLER

Enter a repair code
996261 SB626 - CHECK (NOT AFFECTED)

Target Repair Date
 No date selected

Vehicle Out of Use
 Yes No

Service History **Help** **Start New Prior** **Submit Prior**

2. The full warranty prior screen will now open, check that the fault and repair codes are correct for SB635.
3. Manually add the correct instruments for the respective VIN via EPC. Any fixings will be added automatically.
4. Complete any additional details on the prior as required, then click 'Submit Prior'.

Replace the Instruments

WARNING

Make sure that the motorcycle is stabilised and adequately supported.

Do not support the motorcycle on any ancillary component, the exhaust system or any other non-structural parts of the motorcycle frame.

A correctly supported motorcycle will help prevent it from falling.

Failure to follow the advice above could result in serious injury or death.

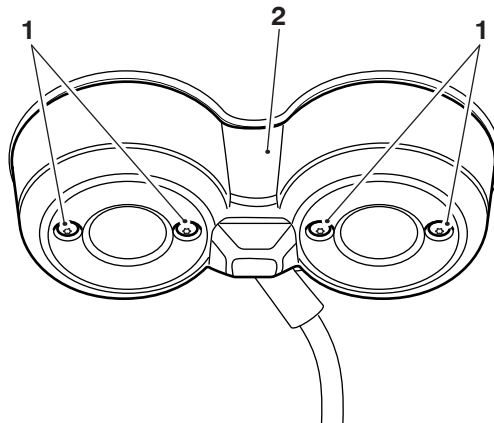
NOTICE

Renew locking devices where specified, refer to Fixings.

Before tightening a fixing using a crow foot spanner adapter, refer to Use of Crow Foot Spanner Adapters with Torque Wrenches.

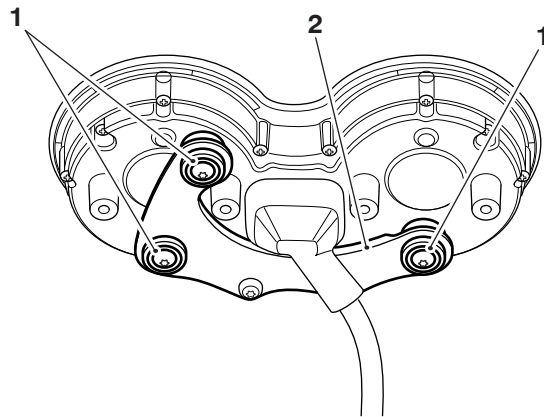
Observe all torque wrench tightening procedures, refer to Tightening procedure.

1. Remove the seat as described in the Service Manual.
2. Disconnect the battery, negative (black) lead first.
3. Remove the headlight as described in the Service Manual.
4. Remove and discard the fixings and remove the instruments cover.



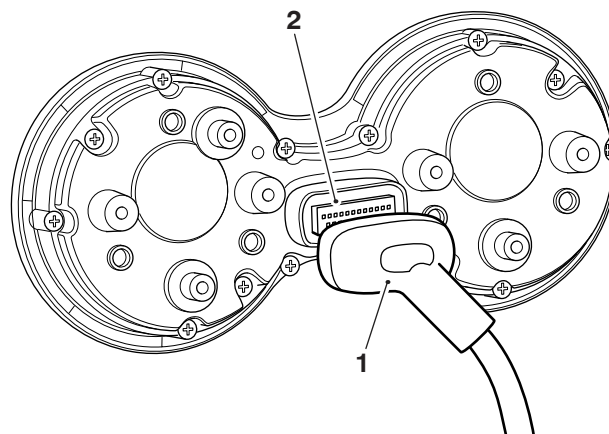
1. **Fixings**
2. **Instruments cover**

-
5. Remove the fixings and detach the instruments from the instruments bracket.



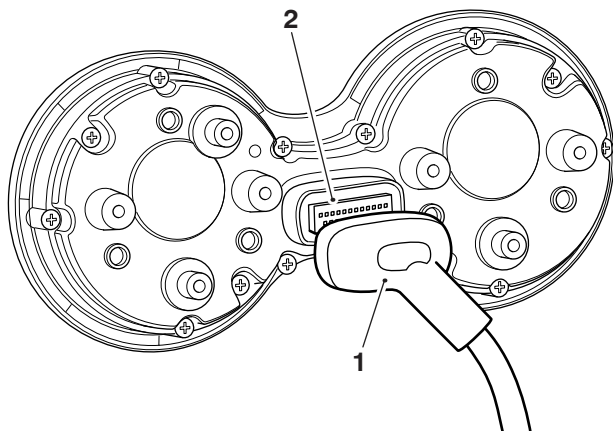
- 1. Fixings
- 2. Instruments bracket

6. Slide the cover off the electrical connector, disconnect the electrical connector and remove the instruments.



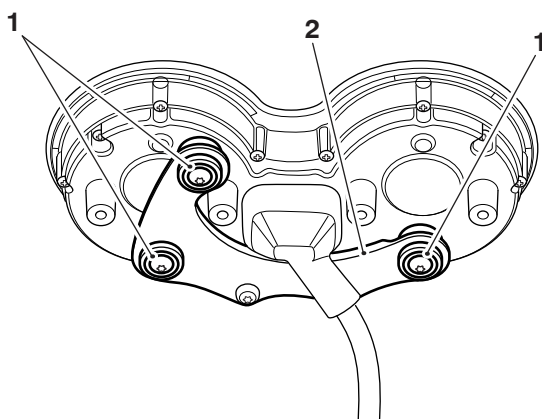
- 1. Cover
- 2. Electrical connector

-
7. Collect the new instruments.
 8. Connect the electrical connector to the instruments, slide the cover over the electrical connector.



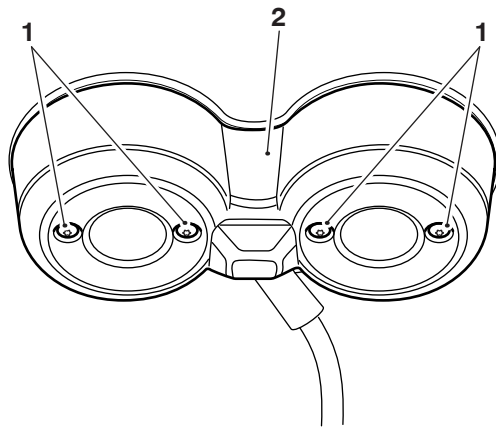
1. Cover
2. Electrical connector

9. Position the instruments to the instruments bracket and secure with the fixings.
10. Tighten the fixings to **3 Nm**.



1. Fixings
2. Instruments bracket

-
11. Fit the instruments cover to the instruments and secure with the new fixings.
 12. Tighten the fixings to **3 Nm**.



1. Fixings

2. Instruments cover

13. Fit the headlight as described in the Service Manual.
14. Connect the battery, positive (red) lead first.
15. Fit the seat as described in the Service Manual.
16. Store the removed instruments in the packaging of its replacement and follow the parts retention instructions referenced earlier in this bulletin. Wait for further instructions.
17. Progress to complete the Pre-Delivery Inspection of the motorcycle.