



STAR ONLINE PUBLICATION



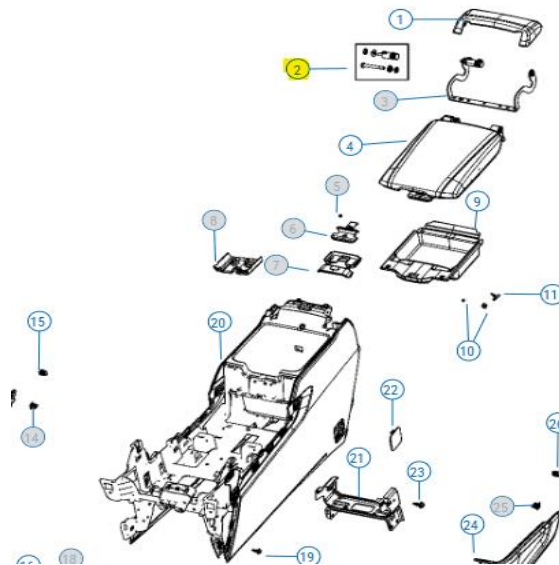
Case Number: S2523000040

Release Date: May 2025

Symptom/Vehicle Issue: Center Console Armrest Lid Does Not Stay Open, Feels Loose, Does Not Latch.

Customer Complaint/Technician Observation: Customer complaints involving the operation of the front center floor console armrest lid.

Discussion: Individual service parts for the lid are available in StarParts.



Example Of StarParts Illustration.
Item 2 -Hinge Pin Repair Kit.

This document does not authorize warranty repairs. This communication documents a record of past experiences. STAR Online does not provide any conclusions about what is wrong with the vehicle. Rather, it captures all previous cases known that appear to be similar or related to the vehicle symptom / condition. You are the expert, and you are responsible for deciding on the appropriate course of action.

Contact STAR Center, or your Technical Assistance Center Via TechConnect, eCONTACT or Service Library entry if no solution is found.



STAR ONLINE PUBLICATION



Repair Procedure: Service information has been updated with detail and a video showing servicing of the lid hinge pin kit. Refer to Service Library 23 - Body / Interior / CONSOLE, Floor, Lid / Removal and Installation FRONT FLOOR CONSOLE LID for servicing details.

The hinge pin kit should be replaced first using the original armrest to see if that addresses the original complaint/issue. If a new hinge kit does not improve armrest function, then and only then a new armrest lid should be used for the repair

This document does not authorize warranty repairs. This communication documents a record of past experiences. STAR Online does not provide any conclusions about what is wrong with the vehicle. Rather, it captures all previous cases known that appear to be similar or related to the vehicle symptom / condition. You are the expert, and you are responsible for deciding on the appropriate course of action.

Contact STAR Center, or your Technical Assistance Center Via TechConnect, eCONTACT or Service Library entry if no solution is found.