

## Field campaign

<b>Topic</b>	Software Update   BiL 5.3.1 v1 to v2   Flying Spur   25MY (SC25/11)
<b>Market area</b>	Bentley: worldwide (2WBE),China 796 VW Import Comp. Ltd (Vico), Beijing (6796)
<b>Brand</b>	Bentley
<b>Transaction No.</b>	2077583/2
<b>Campaign number</b>	ED42
<b>Note</b>	
<b>Type</b>	
<b>US code</b>	

## Vehicle data

### 25MY Flying Spur

#### Sales types

Type	MY	Brand	Designation	Engine code	Gearbox code	Final drive code
Z32*	2025	E		*	*	*

## Documents

Document name
master.xml
ed42vinlist.pdf

---

## Notes



### Technical background

Software updates must be applied to update the vehicles Baseline Integration Level (BiL).

The software update corrects the following Diagnostic trouble codes (DTCs):

- P060100: High Voltage Battery (Address 008C) Internal Control Module Memory Checksum Error
- P057F00: Battery "A" State of Charge Performance, B11B300 Igniter for high voltage battery interrupt
- P0A0B00: High Voltage System Interlock Circuit Performance (HVIL).

### CAUTION

If the ED35 Campaign is showing as outstanding in ElsaPro, the ED35 campaign **MUST** be completed first.  
– If ED35 is not completed first, this update will not succeed.

### Remedy

The instructions within the 'Work' section **must** be conducted to completion.

### Customer notification

Please ensure all applicable instructions are conducted at the nearest opportunity.

### Warranty

#### SVM Update Time

Claim type: 790 or 710

Service number: ED42

Damage code: 0066

Criteria:01

Labour Operation Code: 01 51 00 00

Time: As per ODIS log (Must not exceed 200TU)

### Parts

Not Applicable

### Parts supply

Not Applicable

### Parts despatch control

Not Applicable

---

## Repair instructions



### Technical background

Software updates must be applied to update the vehicles Baseline Integration Level (BiL).

The software update corrects the following Diagnostic trouble codes (DTCs):

- P060100: High Voltage Battery (Address 008C) Internal Control Module Memory Checksum Error
  - P057F00: Battery "A" State of Charge Performance, B11B300 Igniter for high voltage battery interrupt
  - P0A0B00: High Voltage System Interlock Circuit Performance (HVIL).
-

## CAUTION

If the ED35 Campaign is showing as outstanding in ElsaPro, the ED35 campaign **MUST** be completed first.

- If ED35 is not completed first, this update will not succeed.

## Check

Check if the vehicle is already listed as repaired in "Repair history" (in ElsaPro).

Please also refer to the "Identification" section and check if a paint identification mark is evident in the vehicle.

If the vehicle is not shown in ElsaPro as repaired, and the identification mark is not present, please conduct the instructions within the 'Work' section to completion

## Parts

Not Applicable

## Work

## CAUTION

The Bentley ODIS-S Brand Version **MUST** be at least 2.35.1 (or higher)

## CAUTION

Before conducting the onward instructions, the operative **MUST** recheck the communication method in ODIS and ensure that DoIP is selected before proceeding. Within ODIS-S, perform the following:

- On the right hand side, select the "Admin" tile (Within 'Operating modes')
- Select "GFF sequence" (Within 'General information' section)
- Under the "Selection of Communication path" drop-down menu, select "Only permit DoIP communication".

## CAUTION

**DO NOT, UNDER ANY CIRCUMSTANCES, ATTEMPT TO CONDUCT THE SOFTWARE UPDATE VIA THE CAN NETWORK. ONLY DoIP SHOULD BE USED WHEN PERFORMING THE SVM UPDATE.**

## CAUTION

You **MUST ONLY** use the Diagnosis Interface VAS 6154 (WiFi Diagnostic Tool) in USB OPERATION or the CABLE-CONNECTED VAS 5055 for the reprogramming (updating) of the control units.

- If neither of these units are available, the VAS 5054 (A) may be used in USB MODE.
- **DO NOT** under any circumstances use a Bluetooth connection to conduct the reprogramming (updating) of any control units.

## Battery Charger

## CAUTION

**ONLY** Chargers that meet the approved specification on the Mandatory Equipment List (available on the Bentley Hub) **MUST** be used.

- The charger must be set to a mode where a **MINIMUM** of 90a is supplied to the battery during the process. Typically, this is known as 'Power Supply Mode' or 'DIAG+ Mode'.
- A voltage of exactly 14.8v must be set and maintained throughout the process.
- Please refer to the manual to ensure that these requirements are met before beginning any SVM update

## Preparation Before Update

## WARNING

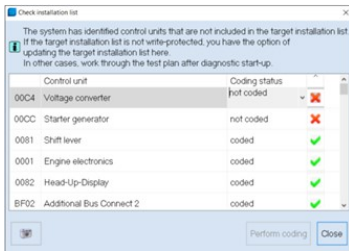
Hybrid Vehicles use a High Voltage System and therefore **MUST ONLY** be worked on by suitable personnel

## CAUTION

During the update, switch off all unnecessary consumers. For example, ventilation, seat heaters, interior illumination, exterior lights ect.

Conduct a full guided fault find of the vehicle.

If a 'Check Installation List' pop-up appears, select 'close' (see below image)



Referring to TPI 2075920, address any unknown faults **BEFORE** conducting any of the below updates.

Ensure that the correct battery charger is connected to the vehicle. – Refer to the "Battery Charger" Section above.

### Obtaining Hotfix for ODIS-S

Visit <https://bentley.atheer.io/> and log in with the following case-sensitive account details.

- Username: bilupdate
- Password: Bentley123!

**NOTICE**  
If you are already logged into your retailer account, you will need to logout first. To do this, click on your account initials (bottom left corner) and click "Sign Out".

After logging in, using the navigation bar on the left hand side, click on the 'conversations' tab



Next, click the conversation named "ED42 Hotfix"



**NOTICE**  
You **MUST NOT** leave the conversation, remove users from the conversation, delete the conversation or alter the conversation in any way. The **ONLY** action you are permitted to perform is download the applicable file required for this campaign.

---

In this conversation, you will find a file named "ED42\_Hotfix" and "ED42\_Local\_Flash\_Files".

Left click each of the file names and download each folder.

After left-clicking the files to download them, the download will take circa 5-10 minutes, do not interrupt this process. You may need to wait a short period (internet speed dependent) for the files to download.

During/before the download commences, there may be a warning about a "pop-up" being blocked which will prevent the file from downloading, ensure to select option "Allow Pop-Ups from this website" to download the file. Wording may differ depending on web browser.

Locate the download file and extract it. To do this, right click the file, click "7 zip" and then "Extract here"

After successfully downloading the file, please logout of the account.

### Loading ODIS-S Hotfix


With the hotfix you have downloaded from Atheer (ED42\_Hotfix), load the hotfix "E\_2.35.1\_HF\_BMC\_BJB\_204\_207\_V2\_20250403-140521" into ODIS-S.

The Bentley ODIS-S Brand Version MUST be at least 2.35.1 (or higher).

With the 'ED42\_Local\_Flash\_Files', copy the content of the folder into your root c:/temp drive on your ODIS device.

- FL\_4M0915249AN\_0201\_UPD0004T0005\_V001\_S.odx
- FL\_4M0915249AM\_0207\_ABJB7A60590M1\_V001\_S.odx
- FL\_4M0915231AH\_0204\_XHX15EV0421M6\_V001\_S.odx

### First SVM Code Input

 <b>CAUTION</b>
<b>At this point, a suitable battery charger must be connected to the vehicle.</b>

1. In ODIS-S, navigate to the "Special Functions" tab.
2. Navigate to 'SVM – Code Input', enter the SVM Code: "373ED4201".
3. On the next screen, ensure that the SVM code displayed is correct.
  
4. You will be shown the communication type. **This MUST be set to "DoIP"**.
  - a. If "DoIP" is not selected, select option 3 until the communication type is set to "DoIP".
  
5. After ensuring DoIP is selected, and a suitable battery charger is connected, select Option 1 – "Yes".
  - a. From here, all control modules will be interrogated and the SVM action will take place.
  
6. Ensure that the diagnostic device remains connected for the duration of the update.
  
7. Follow all on-screen prompts until the program ends.
  - a. If you have a prompt stating there is no communication established with 00CC, select done/continue.
  
8. Follow the on-screen instructions to completion. If you **do not** encounter any errors, please proceed to the "HIGH VOLTAGE SHUTDOWN" section.

 <b>NOTICE</b>
--

If you receive an error code: 8088, you must follow the below instructions.

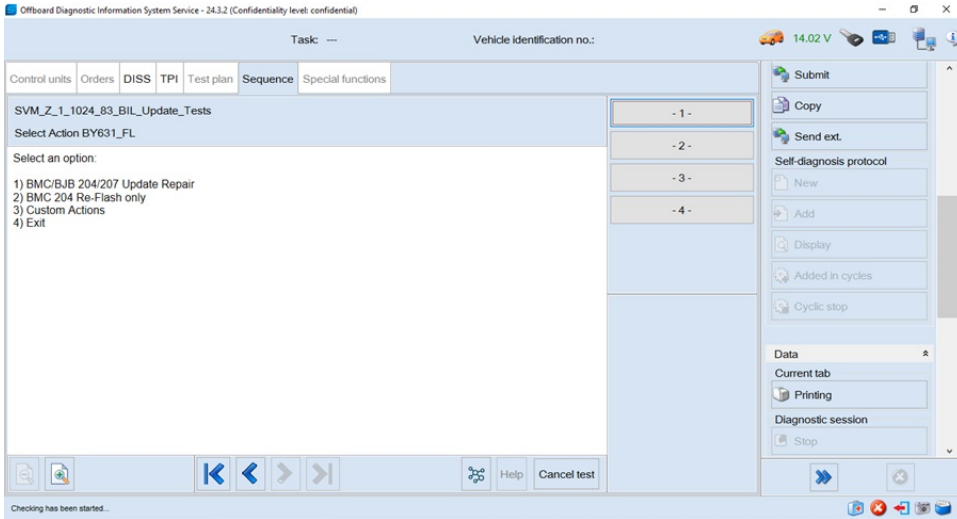
1. In ODIS-S, navigate to the “Special Functions” tab.
2. Navigate to ‘SVM – Code Input’ and enter the SVM code: “373A5CONFIG01”
3. On the next screen, ensure that the SVM code displayed is correct.
  
4. You will be shown the communication type. **This MUST be set to “DoIP”.**
  - a. If “DoIP” is not selected, select option 3 until the communication type is set to “DoIP”.
  
5. After ensuring DoIP is selected, and a suitable battery charger is connected, select Option 1 – “Yes”.
  - a. From here, all control modules will be interrogated and the SVM action will take place.
  
6. Ensure that the diagnostic device remains connected for the duration of the update.
  
7. Follow all on-screen prompts until the program ends.
  - a. If you have a prompt stating there is no communication established with 00CC, select done/continue.
  
8. You may or may not encounter an error after the update. Proceed regardless.
  
9. Refer back to the start of “First SVM Code Input” and repeat the process to input the SVM code “373ED4201”.
  
10. Perform a whole vehicle DTC clear by exiting the current diagnostic session.
  
11. Perform a 15 minute CAN bus sleep.
  - a. Turn off the ignition.
  - b. Remove all equipment from the car (Diagnostic tester/dongle, battery charger, keys).
  - c. Close all doors, windows, bonnet and boot lid.
  - d. Lock the vehicle to perform a CAN-BUS sleep (wait 15 minutes).
  
12. Re-run guided fault finding and clear DTCs

### High Voltage Shutdown

#### **WARNING**

De-energise the high-voltage system via ODIS-S. Refer to ElsaPro, Repair Group 93 – “De-energising high-voltage system” to do so.

1. After de-energisation, Refer to ElsaPro Repair Group 70 ‘Boot carpet – To remove and fit’. Remove the boot floor and gain access to the earth cable from the 12v battery negative and the body in white (This access will be required later in the test plan).
  
2. Navigate to ‘Special functions’ and select ‘SVM – Pre 372BIL5201 Hotfix Routines’, then ‘Perform test’.
  
3. Switch to ‘DoIP’ when prompted.
  
4. Select ‘1) BMC/BJB 204/207 Update Repair’ and follow the on-screen instructions.
  - When the tester attempts to flash ‘008C - Battery regulation control module’ you may receive a message informing you that the pre-conditions have not been met. Select ‘done/continue’.
  - On the following screen (shown below) select option 2 to attempt to flash the ECU – this should allow the ‘008C - Battery regulation control module’ to flash successfully.



- If the flash fails, perform the below actions.

1. Exit the test.

2. Allow the car to sleep for 5 minutes.

- Turn off the ignition.
- Remove all equipment from the car (Diagnostic tester/dongle, battery charger, keys).
- Close all doors, windows, bonnet and boot lid.
- Lock the vehicle to perform a CAN-BUS sleep (wait 5 minutes).

3. Clear DTCs from '008C - Battery regulation control module'.

3a. To do this, right click on control unit 008C, click Guided Functions and then click 'Clear Fault Memory'.

4. Return to 'Special functions' and run the test plan 'SVM – Pre 372BIL5201 Hotfix Routines'.

5. Within this test plan, select option 2 and run until completion.

6. Once the test has been completed, right click on control unit 008C and select guided functions. Then, read ECU Identification and ensure that the 06D0 (Battery Junction Box) appears as a subsystem within the read identification test plan.

7. Continue to the next SVM update.

## Final SVM Code Input



### WARNING

Re-energise the high-voltage system via ODIS-S. Refer to ElsaPro, Repair Group 93 – “Re-energising high-voltage system” to do so.

- After re-energising the High Voltage System, navigate to the “Special Functions” tab in ODIS-S.
- Navigate to 'SVM – Code Input' and enter the SVM Code: “373531COM02”.

3. On the next screen, ensure that the SVM code displayed is correct.
4. You will be shown the communication type. **This MUST be set to "DoIP"**.
  - a. If "DoIP" is not selected, select option 3 until the communication type is set to "DoIP".
5. After ensuring DoIP is selected, and a suitable battery charger is connected, select Option 1 – "Yes".
  - a. From here, all control modules will be interrogated and the SVM action will take place.
6. Ensure that the diagnostic device remains connected for the duration of the update.
7. Follow all on-screen prompts until the program ends.
  - a. If you have a prompt stating there is no communication established with 00CC, select done/continue.
8. Follow the on-screen instructions to completion.
9. If you are presented with this screen (Fig 3) at the end of the update, the update was successful. Please continue to step 11.

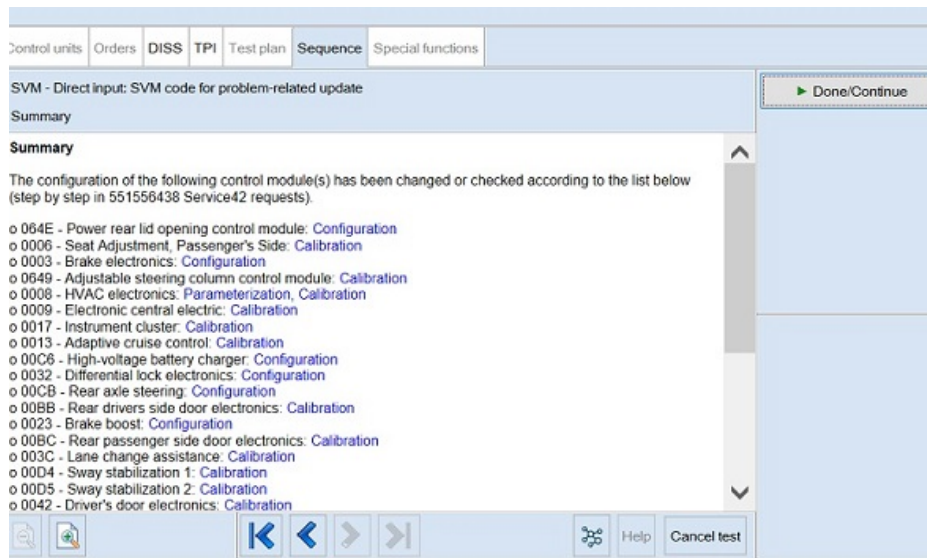


Fig 3

10. If you encounter any errors during the update, please raise a FULL TECHNICAL DISS query.
  - a. Customer Statement: "ED42 Support"
  - b. Workshop Findings: Give a summary of the error encountered and ensure that the latest Guided Fault Finding log is submitted online.
11. After successful completion of the update, perform the following.
  - a. Turn off the ignition.
  - b. Remove all equipment from the car (Diagnostic tester/dongle, battery charger, keys).
  - c. Close all doors, windows, bonnet and boot lid.
  - d. Lock the vehicle to perform a CAN-BUS sleep (wait 15 minutes).
12. After 15 minutes, unlock and open the driver's door. Turn on the ignition, re-connect the battery charger and diagnostic dongle.
13. Re-run guided fault finding and clear DTCs. If any faults are present, refer to TPI 2075920. If any other faults are present, please raise a full DISS query with a fill GFF log uploaded online stating the error encountered.

## Identification

Once the applicable action has been conducted, the operative must submit a warranty claim as this will show the service campaign action as

complete within Elsa Pro "Repair history".

You must also add a blue paint mark as per the picture below.



---

[▲ Repair instructions](#) [▲ Notes](#)

AMERICAS	ASIA PACIFIC
SCBBR6ZG0SC020013	SCBBF53S0SC021579
SCBBR6ZG0SC020030	SCBBF53S0SC021811
SCBBR6ZG0SC020111	SCBBF53S1SC021543
SCBBR6ZG0SC020657	SCBBF53S1SC021977
SCBBR6ZG0SC021209	SCBBF53S4SC021472
SCBBR6ZG0SC021212	SCBBF53S6SC021926
SCBBR6ZG0SC021498	SCBBF53S6SC022249
SCBBR6ZG0SC021534	SCBBF53S7SC021949
SCBBR6ZG0SC021596	SCBBF53S9SC021886
SCBBR6ZG0SC021758	SCBBF53SXSC021959
SCBBR6ZG0SC022084	SCBBJ53S3SC021896
SCBBR6ZG0SC022232	SCBBJ53S7SC021349
SCBBR6ZG0SC022313	SCBBJ53S7SC022338
SCBBR6ZG0SC022327	SCBBJ53S9SC022230
SCBBR6ZG1SC019940	SCBBR53S0SC021718
SCBBR6ZG1SC019954	SCBBR53S0SC022268
SCBBR6ZG1SC019985	SCBBR53S3SC021695
SCBBR6ZG1SC019999	SCBBR53S4SC021592
SCBBR6ZG1SC020036	SCBBR53S4SC021995
SCBBR6ZG1SC020070	SCBBR53S6SC021321
SCBBR6ZG1SC020098	SCBBR53S6SC021657
SCBBR6ZG1SC020117	SCBBR53S6SC021738
SCBBR6ZG1SC020179	SCBBR53S6SC021755
SCBBR6ZG1SC020358	SCBBR53S6SC021853
SCBBR6ZG1SC020781	SCBBR53S6SC022288
SCBBR6ZG1SC021526	SCBBR53S7SC021361
SCBBR6ZG1SC021882	SCBBR53S7SC021716
SCBBR6ZG1SC022160	SCBBR53S8SC021613
SCBBR6ZG1SC022238	SCBBR53S8SC021725
SCBBR6ZG1SC022255	SCBBR53S8SC021871
SCBBR6ZG1SC022319	SCBBR53S8SC022020
SCBBR6ZG2SC019901	SCBBR53S9SC021667
SCBBR6ZG2SC019915	SCBBR53S9SC021765
SCBBR6ZG2SC020028	SCBBR53S9SC021880
SCBBR6ZG2SC020160	SCBBR53SXSC021922
SCBBR6ZG2SC020188	SCBBR53SXSC021953
SCBBR6ZG2SC020191	
SCBBR6ZG2SC021180	
SCBBR6ZG2SC021423	
SCBBR6ZG2SC021437	
SCBBR6ZG2SC021907	

SCBBR6ZG2SC022152	
SCBBR6ZG2SC022183	
SCBBR6ZG2SC022331	
SCBBR6ZG3SC019907	
SCBBR6ZG3SC019924	
SCBBR6ZG3SC020023	
SCBBR6ZG3SC020054	
SCBBR6ZG3SC020085	
SCBBR6ZG3SC020135	
SCBBR6ZG3SC020149	
SCBBR6ZG3SC021169	
SCBBR6ZG3SC021303	
SCBBR6ZG3SC021317	
SCBBR6ZG3SC021415	
SCBBR6ZG3SC021429	
SCBBR6ZG3SC021608	
SCBBR6ZG3SC021639	
SCBBR6ZG3SC021687	
SCBBR6ZG3SC021768	
SCBBR6ZG3SC021902	
SCBBR6ZG3SC021947	
SCBBR6ZG3SC022063	
SCBBR6ZG3SC022127	
SCBBR6ZG3SC022189	
SCBBR6ZG3SC022192	
SCBBR6ZG3SC022242	
SCBBR6ZG3SC022306	
SCBBR6ZG3SC022340	
SCBBR6ZG3SC022354	
SCBBR6ZG4SC019947	
SCBBR6ZG4SC019950	
SCBBR6ZG4SC019964	
SCBBR6ZG4SC019978	
SCBBR6ZG4SC020077	
SCBBR6ZG4SC020659	
SCBBR6ZG4SC021133	
SCBBR6ZG4SC021150	
SCBBR6ZG4SC021343	
SCBBR6ZG4SC021374	
SCBBR6ZG4SC021486	
SCBBR6ZG4SC021519	
SCBBR6ZG4SC021584	

SCBBR6ZG4SC021603	
SCBBR6ZG4SC021648	
SCBBR6ZG4SC021732	
SCBBR6ZG4SC021746	
SCBBR6ZG4SC021939	
SCBBR6ZG4SC022105	
SCBBR6ZG4SC022170	
SCBBR6ZG4SC022203	
SCBBR6ZG4SC022282	
SCBBR6ZG4SC022315	
SCBBR6ZG5SC019911	
SCBBR6ZG5SC019973	
SCBBR6ZG5SC020010	
SCBBR6ZG5SC020105	
SCBBR6ZG5SC021237	
SCBBR6ZG5SC021271	
SCBBR6ZG5SC021447	
SCBBR6ZG5SC021528	
SCBBR6ZG5SC021898	
SCBBR6ZG5SC021951	
SCBBR6ZG5SC022226	
SCBBR6ZG5SC022274	
SCBBR6ZG5SC022369	
SCBBR6ZG6SC019903	
SCBBR6ZG6SC019934	
SCBBR6ZG6SC019982	
SCBBR6ZG6SC019996	
SCBBR6ZG6SC020002	
SCBBR6ZG6SC020047	
SCBBR6ZG6SC020064	
SCBBR6ZG6SC020128	
SCBBR6ZG6SC020713	
SCBBR6ZG6SC021036	
SCBBR6ZG6SC021196	
SCBBR6ZG6SC021232	
SCBBR6ZG6SC021263	
SCBBR6ZG6SC021327	
SCBBR6ZG6SC021523	
SCBBR6ZG6SC021652	
SCBBR6ZG6SC021795	
SCBBR6ZG6SC022008	
SCBBR6ZG6SC022123	

SCBBR6ZG6SC022221	
SCBBR6ZG6SC022266	
SCBBR6ZG6SC022297	
SCBBR6ZG7SC019909	
SCBBR6ZG7SC019943	
SCBBR6ZG7SC019988	
SCBBR6ZG7SC020008	
SCBBR6ZG7SC020056	
SCBBR6ZG7SC020140	
SCBBR6ZG7SC020171	
SCBBR6ZG7SC020753	
SCBBR6ZG7SC021157	
SCBBR6ZG7SC021191	
SCBBR6ZG7SC021241	
SCBBR6ZG7SC021403	
SCBBR6ZG7SC021479	
SCBBR6ZG7SC021563	
SCBBR6ZG7SC021594	
SCBBR6ZG7SC021630	
SCBBR6ZG7SC021708	
SCBBR6ZG7SC022213	
SCBBR6ZG7SC022258	
SCBBR6ZG7SC022292	
SCBBR6ZG7SC022325	
SCBBR6ZG8SC019921	
SCBBR6ZG8SC019952	
SCBBR6ZG8SC019966	
SCBBR6ZG8SC020017	
SCBBR6ZG8SC020020	
SCBBR6ZG8SC020034	
SCBBR6ZG8SC020079	
SCBBR6ZG8SC020163	
SCBBR6ZG8SC020177	
SCBBR6ZG8SC020406	
SCBBR6ZG8SC021202	
SCBBR6ZG8SC021295	
SCBBR6ZG8SC021779	
SCBBR6ZG8SC021782	
SCBBR6ZG8SC022026	
SCBBR6ZG8SC022253	
SCBBR6ZG8SC022317	
SCBBR6ZG8SC022348	

















CHINESE MAINLAND HK AND MACAO	EUROPE	INTERNAL
SCBBF53S1SC021557	SCBBF53S0SC021632	SCBBF53S3SC021284
SCBBF53S1SC021588	SCBBF53S0SC022196	SCBBF53S6SC021683
SCBBF53S1SC021669	SCBBF53S1SC021297	
SCBBF53S4SC021598	SCBBF53S3SC021611	
SCBBF53S6SC021571	SCBBF53S6SC021537	
SCBBF53S9SC021628	SCBBF53S7SC021997	
SCBBG53S0SC021269	SCBBF53S8SC021376	
SCBBG53S0SC021286	SCBBF53S8SC021474	
SCBBG53S0SC021305	SCBBF53S8SC021586	
SCBBG53S0SC021319	SCBBF53S8SC022284	
SCBBG53S0SC021417	SCBBF53S9SC021354	
SCBBG53S0SC021451	SCBBF53S9SC022276	
SCBBG53S0SC021529	SCBBF53SXSC021251	
SCBBG53S0SC021787	SCBBF53SXSC021525	
SCBBG53S0SC021918	SCBBF53SXSC022125	
SCBBG53S0SC021966	SCBBF53SXSC022139	
SCBBG53S0SC022065	SCBBJ53S4SC021602	
SCBBG53S0SC022115	SCBBJ53S8SC021506	
SCBBG53S0SC022180	SCBBJ53S9SC021515	
SCBBG53S0SC022194	SCBBJ53S9SC022129	
SCBBG53S0SC022308		
SCBBG53S1SC021281		
SCBBG53S1SC021443		
SCBBG53S1SC021491		
SCBBG53S1SC021507		
SCBBG53S1SC021541		
SCBBG53S1SC021751		
SCBBG53S1SC021815		
SCBBG53S1SC021989		
SCBBG53S1SC022043		
SCBBG53S1SC022057		
SCBBG53S1SC022091		
SCBBG53S1SC022107		
SCBBG53S1SC022141		
SCBBG53S1SC022172		
SCBBG53S1SC022205		
SCBBG53S1SC022219		
SCBBG53S1SC022270		
SCBBG53S1SC022303		
SCBBG53S1SC022334		
SCBBG53S2SC021273		

SCBBG53S2SC021290
SCBBG53S2SC021323
SCBBG53S2SC021337
SCBBG53S2SC021385
SCBBG53S2SC021435
SCBBG53S2SC021449
SCBBG53S2SC021533
SCBBG53S2SC021581
SCBBG53S2SC021659
SCBBG53S2SC021726
SCBBG53S2SC021807
SCBBG53S2SC021824
SCBBG53S2SC022018
SCBBG53S2SC022049
SCBBG53S2SC022133
SCBBG53S2SC022228
SCBBG53S3SC021265
SCBBG53S3SC021301
SCBBG53S3SC021315
SCBBG53S3SC021329
SCBBG53S3SC021346
SCBBG53S3SC021380
SCBBG53S3SC021413
SCBBG53S3SC021427
SCBBG53S3SC021511
SCBBG53S3SC021606
SCBBG53S3SC021637
SCBBG53S3SC021721
SCBBG53S3SC021735
SCBBG53S3SC021833
SCBBG53S3SC021847
SCBBG53S3SC021878
SCBBG53S3SC021993
SCBBG53S3SC022013
SCBBG53S3SC022061
SCBBG53S3SC022111
SCBBG53S3SC022223
SCBBG53S3SC022240
SCBBG53S3SC022299
SCBBG53S4SC021257
SCBBG53S4SC021307
SCBBG53S4SC021341

SCBBG53S4SC021369
SCBBG53S4SC021372
SCBBG53S4SC021405
SCBBG53S4SC021453
SCBBG53S4SC021484
SCBBG53S4SC021503
SCBBG53S4SC021517
SCBBG53S4SC021694
SCBBG53S4SC021842
SCBBG53S4SC021985
SCBBG53S4SC022005
SCBBG53S4SC022036
SCBBG53S4SC022053
SCBBG53S4SC022215
SCBBG53S4SC022358
SCBBG53S5SC021333
SCBBG53S5SC021364
SCBBG53S5SC021378
SCBBG53S5SC021395
SCBBG53S5SC021459
SCBBG53S5SC021641
SCBBG53S5SC021655
SCBBG53S5SC021803
SCBBG53S5SC021851
SCBBG53S5SC021865
SCBBG53S5SC021929
SCBBG53S5SC022028
SCBBG53S5SC022076
SCBBG53S5SC022210
SCBBG53S5SC022286
SCBBG53S6SC021261
SCBBG53S6SC021311
SCBBG53S6SC021325
SCBBG53S6SC021499
SCBBG53S6SC021521
SCBBG53S6SC021566
SCBBG53S6SC021616
SCBBG53S6SC021650
SCBBG53S6SC021664
SCBBG53S6SC021678
SCBBG53S6SC021731
SCBBG53S6SC021745

SCBBG53S6SC021860
SCBBG53S6SC021924
SCBBG53S6SC022099
SCBBG53S6SC022121
SCBBG53S6SC022149
SCBBG53S6SC022295
SCBBG53S6SC022362
SCBBG53S7SC021253
SCBBG53S7SC021351
SCBBG53S7SC021382
SCBBG53S7SC021401
SCBBG53S7SC021432
SCBBG53S7SC021561
SCBBG53S7SC021706
SCBBG53S7SC021799
SCBBG53S7SC021933
SCBBG53S7SC022032
SCBBG53S7SC022290
SCBBG53S7SC022368
SCBBG53S8SC021293
SCBBG53S8SC021357
SCBBG53S8SC021391
SCBBG53S8SC021407
SCBBG53S8SC021441
SCBBG53S8SC021455
SCBBG53S8SC021469
SCBBG53S8SC021715
SCBBG53S8SC021777
SCBBG53S8SC021911
SCBBG53S8SC021973
SCBBG53S8SC022024
SCBBG53S8SC022072
SCBBG53S8SC022086
SCBBG53S8SC022119
SCBBG53S8SC022136
SCBBG53S8SC022167
SCBBG53S8SC022198
SCBBG53S8SC022329
SCBBG53S8SC022346
SCBBG53S9SC021397
SCBBG53S9SC021464
SCBBG53S9SC021478

SCBBG53S9SC021481
SCBBG53S9SC021495
SCBBG53S9SC021514
SCBBG53S9SC021545
SCBBG53S9SC021576
SCBBG53S9SC021674
SCBBG53S9SC021741
SCBBG53S9SC021772
SCBBG53S9SC021979
SCBBG53S9SC022081
SCBBG53S9SC022095
SCBBG53S9SC022145
SCBBG53S9SC022162
SCBBG53S9SC022176
SCBBG53SXSC021389
SCBBG53SXSC021411
SCBBG53SXSC021425
SCBBG53SXSC021439
SCBBG53SXSC021456
SCBBG53SXSC021702
SCBBG53SXSC021828
SCBBG53SXSC021862
SCBBG53SXSC022039
SCBBG53SXSC022154
SCBBG53SXSC022185
SCBBG53SXSC022235
SCBBG53SXSC022350















MIDDLE EAST AFRICA & INDIA	UNITED KINGDOM
SCBBF53S8SC021409	SCBBF53S0SC021548
SCBBF5ZG1SC021299	SCBBF53S2SC021387
SCBBF5ZG1SC021335	SCBBF53S2SC021762
SCBBF5ZG1SC021366	SCBBF53S2SC021955
SCBBF5ZG1SC021836	SCBBF53S2SC022278
SCBBF5ZG1SC022310	SCBBF53S3SC021625
SCBBF5ZG2SC021277	SCBBF53S3SC022158
SCBBF5ZG2SC021697	SCBBF53S4SC022010
SCBBF5ZG3SC022342	SCBBF53S5SC021559
SCBBF5ZG4SC021359	SCBBF53S5SC021710
SCBBF5ZG4SC021555	SCBBF53S5SC021819
SCBBF5ZG4SC021703	SCBBF53S8SC021698
SCBBF5ZG4SC022365	SCBBF53S9SC022200
SCBBF5ZG6SC021671	SCBBF53SXSC021640
SCBBF5ZG7SC021288	
SCBBF5ZG7SC021873	
SCBBF5ZG7SC022067	
SCBBF5ZG7SC022103	
SCBBF5ZG7SC022165	
SCBBF5ZG8SC021574	
SCBBF5ZG8SC021686	
SCBBF5ZG9SC021275	
SCBBF5ZG9SC021681	
SCBBF5ZGXSC021690	
SCBBF5ZGXSC022046	
SCBBF5ZGXSC022144	
SCBBH53S0SC022208	
SCBBH53S3SC021568	
SCBBJ53S1SC021749	