

Field campaign

Topic	Software Update BJB and HV ECUs Continental GT/GTC/Flying Spur 25MY (SC25/10)
Market area	Bentley: worldwide (2WBE),China 796 VW Import Comp. Ltd (Vico), Beijing (6796)
Brand	Bentley
Transaction No.	2077696/1
Campaign number	ED40
Note	
Type	
US code	

Vehicle data

25MY Continental GT/GTC/Flying Spur

Sales types

Type	MY	Brand	Designation	Engine code	Gearbox code	Final drive code
Z23*	2025	E		*	*	*
Z24*	2025	E		*	*	*
Z32*	2025	E		*	*	*

Documents

Document name
master.xml
ed40vinlist.pdf

Notes



Technical background

Software updates must be applied to update the vehicles Baseline Integration Level (BiL).

The software update corrects the following Diagnostic trouble codes (DTCs):

- P060100: High Voltage Battery (Address 008C) Internal Control Module Memory Checksum Error
- P057F00: Battery "A" State of Charge Performance, B11B300 Igniter for high voltage battery interrupt
- P0A0B00: High Voltage System Interlock Circuit Performance (HVIL).

Remedy

The instructions within the 'Work' section **must** be conducted to completion.

Customer notification

Please ensure all applicable instructions are conducted at the nearest opportunity.

Warranty

SVM Update Time

Claim type: 790 or 710

Service number: ED40

Damage code: 0066

Criteria:01

Labour Operation Code: 01 51 00 00

Time: As per ODIS log (Must not exceed 200TU)

Parts

Not Applicable

Parts supply

Not Applicable

Parts despatch control

Not Applicable

Repair instructions



Technical background

Software updates must be applied to update the vehicles Baseline Integration Level (BiL).

The software update corrects the following Diagnostic trouble codes (DTCs):

- P060100: High Voltage Battery (Address 008C) Internal Control Module Memory Checksum Error
- P057F00: Battery "A" State of Charge Performance, B11B300 Igniter for high voltage battery interrupt
- P0A0B00: High Voltage System Interlock Circuit Performance (HVIL).

Check

Check if the vehicle is already listed as repaired in "Repair history" (in ElsaPro).

Please also refer to the "Identification" section and check if a paint identification mark is evident in the vehicle.

If the vehicle is not shown in ElsaPro as repaired, and the identification mark is not present, please conduct the instructions within the 'Work' section to completion

Parts

Not Applicable

Work

CAUTION

The Bentley ODIS-S Brand Version **MUST** be at least 2.35.2 (or higher).

CAUTION

Before conducting the onward instructions, the operative **MUST** recheck the communication method in ODIS and ensure that DoIP is selected before proceeding. Within ODIS-S, perform the following:

- On the right hand side, select the “Admin” tile (Within ‘Operating modes’)
- Select “GFF sequence” (Within ‘General information’ section)
- Under the “Selection of Communication path” drop-down menu, select “Only permit DoIP communication”.

CAUTION

DO NOT, UNDER ANY CIRCUMSTANCES, ATTEMPT TO CONDUCT THE SOFTWARE UPDATE VIA THE CAN NETWORK. ONLY DoIP SHOULD BE USED WHEN PERFORMING THE SVM UPDATE.

CAUTION

You **MUST ONLY** use the Diagnosis Interface VAS 6154 (WiFi Diagnostic Tool) in USB OPERATION or the CABLE-CONNECTED VAS 5055 for the reprogramming (updating) of the control units.

- If neither of these units are available, the VAS 5054 (A) may be used in USB MODE.
- **DO NOT** under any circumstances use a Bluetooth connection to conduct the reprogramming (updating) of any control units.

Battery Charger

CAUTION

ONLY Chargers that meet the approved specification on the Mandatory Equipment List (available on the Bentley Hub) **MUST** be used.

- The charger must be set to a mode where a **MINIMUM** of 90a is supplied to the battery during the process. Typically, this is known as ‘Power Supply Mode’ or ‘DIAG+ Mode’.
- A voltage of exactly 14.8v must be set and maintained throughout the process.
- Please refer to the manual to ensure that these requirements are met before beginning any SVM update

Preparation Before Update

WARNING

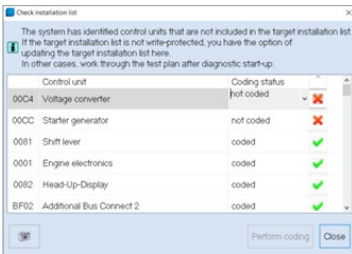
Hybrid Vehicles use a High Voltage System and therefore **MUST ONLY** be worked on by suitable personnel

CAUTION

During the update, switch off all unnecessary consumers. For example, ventilation, seat heaters, interior illumination, exterior lights ect.

Conduct a full guided fault find of the vehicle.

If a ‘Check Installation List’ pop-up appears, select ‘close’ (see below image)



Referring to TPI 2075920, address any unknown faults **BEFORE** conducting any of the below updates.

Ensure that the correct battery charger is connected to the vehicle. – Refer to the “Battery Charger” Section above.

Obtaining Hotfix for ODIS-S

NOTICE

The Bentley ODIS-S Brand Version 2.35.2 does not require Hotfix. Only loading of the local flash files.

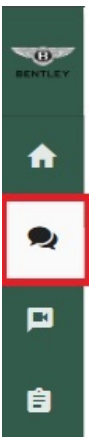
Visit <https://bentley.atheer.io/> and log in with the following case-sensitive account details.

- Username: bilupdate
- Password: Bentley123!

NOTICE

If you are already logged into your retailer account, you will need to logout first. To do this, click on your account initials (bottom left corner) and click “Sign Out”.

After logging in, using the navigation bar on the left hand side, click on the ‘conversations’ tab



Next, click the conversation named “ED40 Campaign”.

NOTICE

You MUST NOT leave the conversation, remove users from the conversation, delete the conversation or alter the conversation in any way. The ONLY action you are permitted to perform is download the applicable file required for this campaign.

In this conversation, you will find a file named “ED40_Local_Flash_Files”.

Left click the file name and download the folder.

After left-clicking the files to download them, the download may take circa 5-10 minutes, do not interrupt this process. You may need to wait a short period (internet speed dependent) for the files to download.

During/before the download commences, there may be a warning about a "pop-up" being blocked which will prevent the file from downloading, ensure to select option "Allow Pop-Ups from this website" to download the file. Wording may differ depending on web browser.

Locate the download file and extract it. To do this, right click the file, click "7 zip" and then "Extract here"

After successfully downloading the file, please logout of the account.

Downloading Flash Files for ODIS-S

From the content within the 'ED40_Local_Flash_Files' download, copy the content of the folder into your root c:/temp drive on your ODIS device.

- FL_4M0915249AN_0201_UPD0004T0005_V001_S.odx
- FL_4M0915249AM_0207_ABJB7A60590M1_V001_S.odx
- FL_4M0915231AH_0204_XHX15EV0421M6_V001_S.odx

High Voltage Shutdown

WARNING

De-energise the high-voltage system via ODIS-S. Refer to ElsaPro, Repair Group 93 – "De-energising high-voltage system" to do so.

1. After de-energisation, Refer to ElsaPro Repair Group 70 'Boot carpet – To remove and fit'. Remove the boot floor and gain access to the earth cable from the 12v battery negative and the body in white (This access will be required later in the test plan).
2. Navigate to 'Special functions' and select 'SVM – Pre 372BIL5201 Hotfix Routines', then 'Perform test'.
3. Switch to 'DoIP' when prompted.
- 4a. For **Continental Flying Spur Vehicles** Select '**1**) BMC/BJB 204/207 Update Repair' and follow the on-screen instructions.
- 4b. For **Continental GT/GTC Vehicles** Select '**8**) BMC/BJB 204/207 Update Repair' and follow the on-screen instructions.
 - When the tester attempts to flash '008C - Battery regulation control module' you may receive a message informing you that the pre-conditions have not been met. Select 'done/continue'.
 - On the following screen (shown below) select option 2 to attempt to flash the ECU – this should allow the '008C - Battery regulation control module' to flash successfully.

NOTICE

If the flash fails, perform the below actions.

1. Exit the test.
2. Allow the car to sleep for 5 minutes.
 - a. Turn off the ignition.
 - b. Remove all equipment from the car (Diagnostic tester/dongle, battery charger, keys).
 - c. Close all doors, windows, bonnet and boot lid.
 - d. Lock the vehicle to perform a CAN-BUS sleep (wait 5 minutes).
3. Clear DTCs from '008C - Battery regulation control module'.
 - 3a. To do this, right click on control unit 008C, click Guided Functions and then click 'Clear Fault Memory'.

4. Return to 'Special functions' and run the test plan 'SVM – Pre 372BIL5201 Hotfix Routines'.
5. Within this test plan, select option 2 and run until completion.
6. Once the test has been completed, right click on control unit 008C and select guided functions. Then, read ECU Identification and ensure that the 06D0 (Battery Junction Box) appears as a subsystem within the read identification test plan.
7. Continue to the next SVM update.

SVM Code Input

WARNING

Re-energise the high-voltage system via ODIS-S. Refer to ElsaPro, Repair Group 93 – “Re-energising high-voltage system” to do so.

1. After re-energising the High Voltage System, navigate to the “Special Functions” tab in ODIS-S.
2. Navigate to 'SVM – Code Input' and enter the SVM Code.
 - a. If the vehicle is any variant of a Continental GT or GTC, enter the SVM Code: “372ED40COM01”.
 - b. If the vehicle is any variant of a Continental Flying Spur, enter the SVM Code: “373ED40COM01”.
3. On the next screen, ensure that the SVM code displayed is correct.
4. You will be shown the communication type. **This MUST be set to “DoIP”.**
 - a. If “DoIP” is not selected, select option 3 until the communication type is set to “DoIP”.
5. After ensuring DoIP is selected, and a suitable battery charger is connected, select Option 1 – “Yes”.
 - a. From here, all control modules will be interrogated and the SVM action will take place.
6. Ensure that the diagnostic device remains connected for the duration of the update.
7. Follow all on-screen prompts until the program ends.
 - a. If you have a prompt stating there is no communication established with 00CC, select done/continue.
8. Follow the on-screen instructions to completion.
9. If you are presented with this screen (Fig 3) at the end of the update, the update was successful. Please continue to step 11.

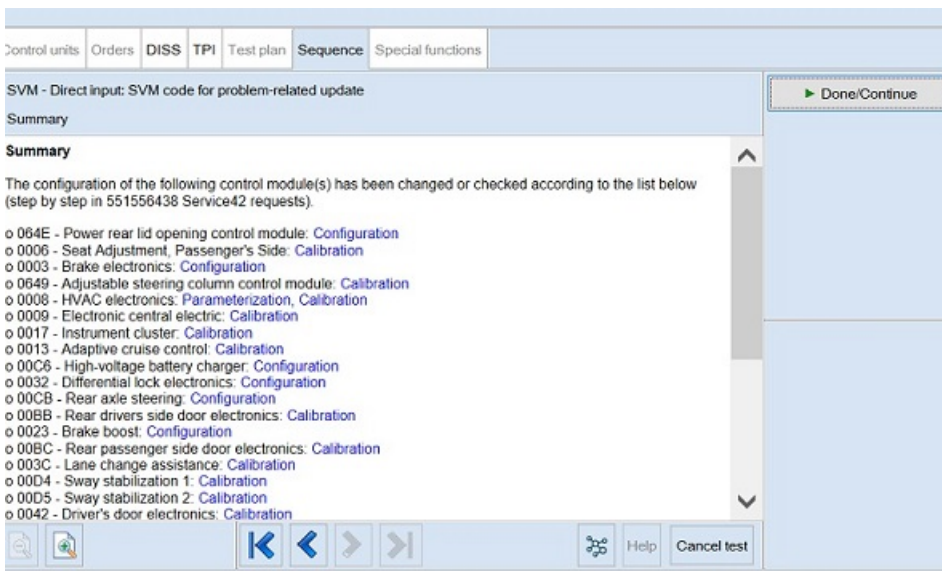


Fig 3

10. If you encounter any errors during the update, please raise a FULL TECHNICAL DISS query.

a. Customer Statement: "ED40 Support"

b. Workshop Findings: Give a summary of the error encountered and ensure that the latest Guided Fault Finding log is submitted online.

11. After successful completion of the update, perform the following.

a. Turn off the ignition.

b. Remove all equipment from the car (Diagnostic tester/dongle, battery charger, keys).

c. Close all doors, windows, bonnet and boot lid.

d. Lock the vehicle to perform a CAN-BUS sleep (wait 15 minutes).

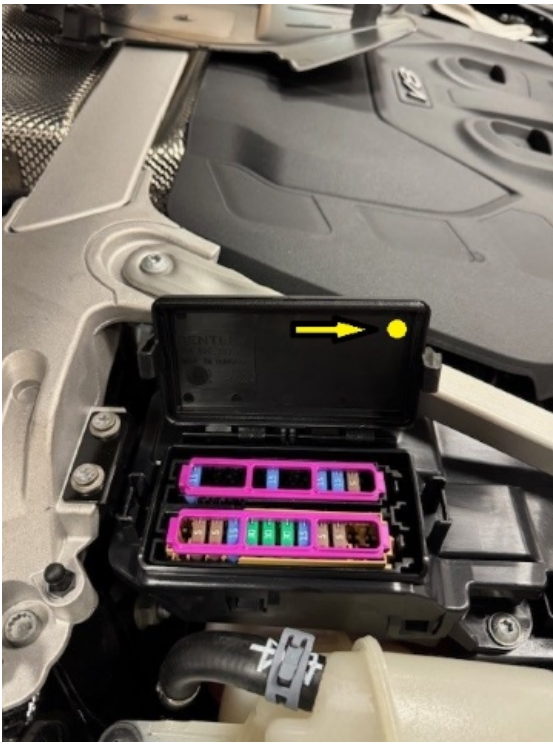
12. After 15 minutes, unlock and open the driver's door. Turn on the ignition, re-connect the battery charger and diagnostic dongle.

13. Re-run guided fault finding and clear DTCs. If any faults are present, refer to TPI 2075920. If any other faults are present, please raise a full DISS query with a full GFF log uploaded online stating the error encountered.

Identification

Once the applicable action has been conducted, the operative must submit a warranty claim as this will show the service campaign action as complete within Elsa Pro "Repair history".

You must also add a yellow paint mark to the underside of the Fusebox cover as per the picture below.



[▲ Repair instructions](#) [▲ Notes](#)

INTERNAL

AMERICAS	ASIA PACIFIC	CHINESE MAINLAND HK AND MACAO
SCBBR6ZG2SC022409	SCBCF13SXSC022378	SCBCG13S3SC022381
SCBBR6ZG9SC022388	SCBDF33S3SC022383	SCBCG13S7SC022397
SCBCR2ZG4SC022408	SCBDF33S4SC022375	SCBBG53S6SC022412
SCBCR2ZG6SC022376	SCBCF13S2SC022424	SCBBG53SXSC022445
SCBDR4ZG2SC022391	SCBBR53S1SC022425	SCBCG13S4SC022437
SCBDR4ZG7SC022385	SCBBR53S4SC022404	SCBBG53S9SC022470
SCBCR2ZG0SC022406	SCBBR53S5SC022394	SCBCG13S4SC022499
SCBCR2ZG3SC022402	SCBCF13S8SC022461	SCBCG13S8SC022490
SCBDR4ZG5SC022403	SCBCF13SXSC022414	SCBCG13S9SC022434
SCBBR6ZG1SC022384	SCBDF33S7SC022452	SCBBG53S6SC022474
SCBBR6ZG3SC022466	SCBDF33S8SC022489	SCBBG53S9SC022498
SCBBR6ZG4SC022377	SCBBF53S6SC022476	SCBBF53S3SC022564
SCBBR6ZG7SC022485	SCBCF13S1SC022530	SCBBG53S3SC022433
SCBBR6ZGXSC022416	SCBCF13S9SC022467	SCBBG53S6SC022507
SCBDR4ZG3SC022447	SCBBJ53S6SC022556	SCBBG53S8SC022542
SCBBR6ZG1SC022496	SCBCF13S1SC022494	SCBBG53S2SC022584
SCBBR6ZG4SC022427	SCBCR13S4SC022545	SCBBG53S3SC022576
SCBBR6ZG5SC022436	SCBBR53S0SC022481	SCBBG53S4SC022571
SCBBR6ZG8SC022396	SCBCF13S1SC022544	SCBBG53S0SC022552
SCBBR6ZG9SC022438	SCBCR13S9SC022508	SCBBG53S5SC022613
SCBBR6ZG9SC022472	SCBBF53S1SC022529	SCBBG53S2SC022603
SCBCR2ZG0SC022387	SCBBR53S3SC022569	SCBCG13S0SC022645
SCBCR2ZG8SC022458	SCBCF13SXSC022610	SCBDF33SXSC022512
SCBCR2ZG8SC022475	SCBCF13S7SC022614	SCBBG53S1SC022642
SCBCR2ZG9SC022484	SCBDF33S2SC022486	SCBBG53S5SC022661
SCBDR4ZG3SC022500	SCBDR33S9SC022587	SCBBG53S8SC022492
SCBDR4ZG4SC022411	SCBDR33SXSC022632	SCBBG53S8SC022623
SCBDR4ZG5SC022482	SCBBF53S3SC022581	SCBDG33S0SC022418
SCBDR4ZGXSC022459	SCBCJ13S9SC022435	SCBBG53S0SC022535
SCBDR4ZGXSC022462	SCBDF33S4SC022635	SCBBG53S6SC022460
SCBBR6ZG1SC022448	SCBBR53S6SC022663	SCBBG53S6SC022667
SCBBR6ZG1SC022479	SCBCR13S6SC022725	SCBCF13SXSC022655
SCBBR6ZG4SC022511	SCBBR53S4SC022693	SCBBG53S0SC022728
SCBBR6ZG5SC022453	SCBBR53S9SC022740	SCBBG53S1SC022513
SCBBR6ZG7SC022504	SCBBR53S6SC022811	SCBBG53S8SC022752
SCBBR6ZGXSC022531	SCBCR13S8SC022807	SCBBG53S9SC022646
SCBCR2ZG2SC022505	SCBDR33S1SC022776	SCBBG53SXSC022719
SCBDR4ZG4SC022456	SCBBF53S1SC022580	SCBBG53SXSC022736
SCBDR4ZG6SC022426	SCBBF53S5SC022825	SCBBG53S5SC022742
SCBBR6ZG0SC022540	SCBBF53S2SC022815	SCBBG53S9SC022517
SCBBR6ZG6SC022509	SCBBF53S6SC022901	SCBBG53SXSC022526
SCBBR6ZG9SC022455	SCBBR53S7SC022834	SCBBG53S0SC022549
SCBBR6ZGXSC022514	SCBCR13S4SC022917	SCBBG53S2SC022651

INTERNAL

SCBCR2ZG3SC022495
SCBCR2ZG4SC022568
SCBDR4ZG5SC022532
SCBBR6ZG8SC022558
SCBBR6ZGXSC022464
SCBBR6ZGXSC022562
SCBCR2ZG0SC022566
SCBCR2ZG1SC022575
SCBCR2ZG2SC022519
SCBCR2ZG2SC022570
SCBCR2ZG3SC022593
SCBCR2ZG7SC022550
SCBDR4ZG5SC022577
SCBBR6ZG2SC022524
SCBBR6ZG2SC022605
SCBBR6ZG3SC022631
SCBBR6ZG5SC022520
SCBBR6ZG5SC022551
SCBBR6ZG5SC022601
SCBBR6ZG7SC022440
SCBBR6ZG9SC022620
SCBCR2ZG0SC022616
SCBCR2ZG6SC022541
SCBCR2ZG6SC022619
SCBDR4ZG2SC022617
SCBDR4ZG3SC022612
SCBDR4ZG7SC022502
SCBBR6ZG1SC022594
SCBCR2ZG4SC022523
SCBBR6ZG0SC022649
SCBBR6ZG1SC022644
SCBBR6ZG6SC022574
SCBBR6ZG8SC022429
SCBBR6ZGXSC022609
SCBCP2ZG3SC022678
SCBCR2ZG0SC022650
SCBCR2ZG1SC022625
SCBCR2ZG2SC022553
SCBCR2ZGXSC022641
SCBDR4ZG4SC022652
SCBDR4ZG7SC022600
SCBDR4ZG7SC022662
SCBBR6ZG0SC022697
SCBBR6ZG4SC022640

SCBCG13S4SC022583
SCBDG33S3SC022624
SCBBG53S2SC022746
SCBBG53S4SC022599
SCBCG13S9SC022840
SCBBG53S2SC022522
SCBCG13SXSC022832
SCBDG33S3SC022543
SCBBG53S4SC022876
SCBBG53S5SC022837
SCBBG53S2SC022942
SCBBG53S8SC022895

INTERNAL

SCBBR6ZG5SC022422
SCBBR6ZG6SC022638
SCBCP2ZG9SC022698
SCBCR2ZG5SC022689
SCBDP4ZG7SC022683
SCBDR4ZG5SC022627
SCBDR4ZG5SC022658
SCBDR4ZG8SC022668
SCBBP6ZG1SC022682
SCBBR6ZG3SC022628
SCBBR6ZG4SC022671
SCBBR6ZG6SC022669
SCBBR6ZG9SC022701
SCBBR6ZGXSC022657
SCBCR2ZG5SC022739
SCBCR2ZG7SC022659
SCBCR2ZG7SC022709
SCBCR2ZG8SC022637
SCBDP4ZG1SC022677
SCBDR4ZG1SC022656
SCBBP6ZG1SC022763
SCBBR6ZG4SC022766
SCBBR6ZG7SC022695
SCBCP2ZG0SC022749
SCBCR2ZG4SC022733
SCBCR2ZG7SC022774
SCBDR4ZG1SC022768
SCBDR4ZG3SC022528
SCBDR4ZG4SC022747
SCBBP6ZG5SC022703
SCBBR6ZG2SC022748
SCBCR2ZG0SC022793
SCBDR4ZG6SC022765
SCBBP6ZG6SC022760
SCBBR6ZG0SC022795
SCBBR6ZG0SC022831
SCBBR6ZG8SC022723
SCBCP2ZG9SC022684
SCBCR2ZG0SC022812
SCBCR2ZG1SC022608
SCBCR2ZG8SC022816
SCBCR2ZGXSC022767
SCBCR2ZGXSC022798
SCBDP4ZG1SC022758

INTERNAL

SCBDP4ZG9SC022782
SCBBP6ZG6SC022855
SCBBR6ZG2SC022801
SCBBR6ZG4SC022847
SCBBR6ZG5SC022842
SCBBR6ZGXSC022450
SCBCR2ZG6SC022538
SCBDP4ZG4SC022866
SCBDP4ZG9SC022846
SCBDR4ZG2SC022598
SCBDR4ZG3SC022724
SCBBP6ZG2SC022898
SCBBP6ZG6SC022726
SCBBP6ZG8SC022873
SCBBR6ZG1SC022806
SCBBR6ZG4SC022833
SCBBR6ZG9SC022827
SCBBR6ZGXSC022819
SCBCP2ZG5SC022830
SCBCR2ZG5SC022854
SCBCR2ZG6SC022877
SCBCR2ZGXSC022879
SCBDP4ZG8SC022899
SCBDP4ZG9SC022894
SCBDR4ZG2SC022567
SCBDR4ZG4SC022893
SCBDR4ZG9SC022579
SCBBP6ZG1SC022911
SCBBP6ZG8SC022775
SCBBP6ZGXSC022907
SCBBR6ZG1SC022885
SCBBR6ZG2SC022829
SCBBR6ZG6SC022817
SCBBR6ZG8SC022849
SCBCP2ZG3SC022888
SCBCP2ZG5SC022908
SCBDP4ZG6SC022836
SCBDR4ZGXSC022929
SCBBP6ZG9SC022994
SCBBP6ZGXSC022891
SCBBR6ZG4SC022914
SCBBR6ZG5SC022887
SCBCP2ZG8SC022949
SCBCR2ZG1SC022947

INTERNAL

SCBCR2ZG7SC022533
SCBCR2ZG7SC022953
SCBCR2ZGXSC022932

INTERNAL

EUROPE	MIDDLE EAST AFRICA & INDIA	UNITED KINGDOM
SCBCF13S8SC022380	SCBBF5ZG9SC022457	SCBBF53S0SC022392
SCBCF13S9SC022405	SCBBF5ZGXSC022483	SCBCF13S2SC022410
SCBCJ13S2SC022390	SCBDJ3ZG9SC022518	SCBDF33S1SC022432
SCBDF33S4SC022389	SCBBF5ZG9SC022488	SCBCF13S0SC022468
SCBDF33SXSC022395	SCBCF1ZG0SC022442	SCBCF13S5SC022515
SCBCF13S6SC022393	SCBBF5ZG2SC022588	SCBCF13S1SC022561
SCBCF13S9SC022419	SCBCF1ZG7SC022602	SCBCF13S9SC022503
SCBCF13S0SC022454	SCBBF53SXSC022626	SCBDF33S5SC022546
SCBCF13S5SC022417	SCBBF5ZG4SC022611	SCBCF13S4SC022487
SCBCF13S5SC022465	SCBDF3ZG3SC022595	SCBDF33SXSC022493
SCBCF13S7SC022421	SCBCF1ZG9SC022634	SCBCF13S9SC022548
SCBDF33S2SC022441	SCBBF5ZG0SC022685	SCBDF33S5SC022563
SCBDF33SXSC022428	SCBBF5ZG2SC022560	SCBDF33S6SC022572
SCBBF53S1SC022420	SCBCH13S4SC022712	SCBBF53S0SC022618
SCBCF13S1SC022463	SCBDF3ZG8SC022639	SCBBL53S3SC022721
SCBCF13S1SC022480	SCBCF1ZG9SC022665	SCBBL53S9SC022688
SCBDF33S2SC022469	SCBCH13S0SC022772	SCBCF13S2SC022648
SCBDF33S3SC022478	SCBCF13SXSC022803	SCBDL33S1SC022679
SCBCF13S0SC022521	SCBBF5ZG7SC022862	SCBCF13S9SC022694
SCBCF13S1SC022477	SCBCF1ZG1SC022871	SCBCL13S4SC022756
SCBCF13S1SC022527	SCBCF1ZG6SC022770	SCBDL33S3SC022716
SCBCF13S5SC022501	SCBBF5ZG2SC022607	SCBCF13S6SC022443
SCBDF33S0SC022423	SCBCJ13S0SC022923	SCBCL13S3SC022764
SCBDF33S4SC022473		SCBCL13S8SC022727
SCBDF33S7SC022497		SCBDF33S0SC022647
SCBDF33S8SC022525		SCBDF33S0SC022714
SCBBF53S5SC022386		SCBDF33S4SC022585
SCBCF13S2SC022536		SCBBL53S7SC022804
SCBCF13SXSC022557		SCBCL13S0SC022737
SCBCJ13S6SC022506		SCBCL13S1SC022813
SCBDF33S3SC022559		SCBCL13S4SC022787
SCBDF33S7SC022516		SCBDL33S5SC022751
SCBDF33S8SC022539		SCBCL13S0SC022835
SCBBF53S3SC022547		SCBCL13SXSC022681
SCBCF13S0SC022471		SCBDL33S6SC022791
SCBCF13S0SC022597		SCBDL33S6SC022824
SCBCF13S6SC022586		SCBBF53S7SC022664
SCBCF13S9SC022596		SCBCL13S7SC022850
SCBDF33S9SC022582		SCBBL53SXSC022750
SCBBF53S0SC022537		SCBCF13S0SC022843
SCBCF13S0SC022633		SCBCL13S0SC022883
SCBCF13S9SC022629		SCBCL13S1SC022861
SCBCF13SXSC022591		SCBCL13S6SC022838

INTERNAL

SCBDF33S6SC022555
SCBCF13S9SC022565
SCBDF33S1SC022592
SCBBF53S2SC022653
SCBCF13S3SC022660
SCBCF13S5SC022451
SCBCF13S8SC022654
SCBDF33S3SC022643
SCBDF33S9SC022534
SCBBF53S4SC022590
SCBBL53S9SC022674
SCBCF13S4SC022604
SCBCL13S0SC022687
SCBCL13S2SC022710
SCBBF53S0SC022554
SCBBF53S8SC022690
SCBCF13S0SC022700
SCBCF13S1SC022673
SCBCL13S2SC022691
SCBCL13S3SC022702
SCBDF33S8SC022606
SCBDF33SXSC022686
SCBDL33S4SC022675
SCBBF53S5SC022789
SCBBF53S9SC022715
SCBCF13S0SC022759
SCBCF13S1SC022785
SCBCF13S2SC022780
SCBCF13S3SC022769
SCBCF13S4SC022778
SCBCF13SXSC022722
SCBCL13S8SC022761
SCBDF33S0SC022731
SCBDF33S0SC022762
SCBDL33S0SC022771
SCBCF13S6SC022720
SCBCF13S7SC022743
SCBCF13S8SC022783
SCBDL33S5SC022779
SCBBF53S5SC022730
SCBBF53S9SC022777
SCBBL53S2SC022676
SCBBL53S9SC022786
SCBCF13S0SC022809

SCBDL33S4SC022868
SCBDL33S6SC022810
SCBBL53S1SC022927
SCBBL53S5SC022882
SCBCL13S7SC022900
SCBCL13S8SC022890
SCBCL13SXSC022924
SCBDL33S6SC022872
SCBCL13S0SC022950
SCBCL13S8SC022906

INTERNAL

SCBCF13S0SC022826
SCBCF13S3SC022741
SCBCF13S6SC022622
SCBCL13S1SC022729
SCBCL13S1SC022794
SCBCL13S4SC022790
SCBCL13S7SC022735
SCBDF33S3SC022755
SCBDF33S3SC022805
SCBDF33S8SC022797
SCBDF33SXSC022784
SCBDL33S3SC022814
SCBDL33S6SC022788
SCBBF53S3SC022757
SCBBL53S4SC022744
SCBBL53S4SC022808
SCBCF13S0SC022857
SCBCF13S4SC022439
SCBCF13S4SC022666
SCBCF13S4SC022828
SCBCF13S5SC022823
SCBCF13S6SC022796
SCBCJ13S1SC022672
SCBCL13S0SC022818
SCBCL13S3SC022859
SCBCL13S8SC022713
SCBDF33S5SC022630
SCBBF53S7SC022860
SCBBL53S7SC022821
SCBBL53S8SC022858
SCBCF13S2SC022889
SCBCF13S8SC022881
SCBDF33S5SC022773
SCBDF33S7SC022841
SCBDL33S9SC022820
SCBBF53S0SC022909
SCBBL53S8SC022844
SCBCF13S1SC022897
SCBCF13S2SC022892
SCBCF13S3SC022903
SCBCF13S6SC022913
SCBCL13S2SC022884
SCBCL13S4SC022921
SCBCL13S7SC022931

INTERNAL

SCBDF33S8SC022864
SCBCF13S7SC022869
SCBCF13S9SC022937
SCBCL13S6SC022886
SCBCL13S6SC022919
SCBDF33S1SC022902