

## Field campaign

<b>Topic</b>	BiL 5.2.1 Thermal Management ECU Update (NAR)   Continental GT/GTC and Flying Spur   25MY
<b>Market area</b>	United States E05 Bentley USA and rest America (6E05)
<b>Brand</b>	Bentley
<b>Transaction No.</b>	2076943/6
<b>Campaign number</b>	ED35
<b>Note</b>	
<b>Type</b>	
<b>US code</b>	

## Vehicle data

### 25MY Continental GT, GTC & Flying Spur

#### Sales types

Type	MY	Brand	Designation	Engine code	Gearbox code	Final drive code
Z23*	2025	E		*	*	*
Z24*	2025	E		*	*	*
Z32*	2025	E		*	*	*

## Documents

Document name
<a href="#">master.xml</a>
<a href="#">ed35_svm_code.pdf</a>
<a href="#">ed35vinlistv4.pdf</a>

---

## Notes



### Technical background

Software updates must be applied to update the vehicles ZDC data for the thermal management ECU.

The update corrects DTC in TME (Address 00C5) for P2CD400: A/C Refrigerant Pressure Sensor "A"/"B" Correlation.

### Remedy

The instructions within the 'Work' section **must** be conducted to completion.

### Customer notification

Please ensure all applicable instructions are conducted at the nearest opportunity.

### Warranty

#### SVM Update Time

Claim type: 790 or 710

Service number: ED35

Damage code: 0066

Criteria:01

Labour Operation Code: 01 51 00 00

Time: As per ODIS log (Must not exceed 50TU)

### Parts

Not Applicable

### Parts supply

Not Applicable

### Parts despatch control

Not Applicable

---

## Repair instructions



### Technical background

Software updates must be applied to update the vehicles ZDC data for the thermal management ECU.

The update corrects DTC in TME (Address 00C5) for P2CD400: A/C Refrigerant Pressure Sensor "A"/"B" Correlation.

### Check

Check if the vehicle is already listed as repaired in "Repair history" (in ElsaPro).

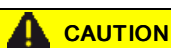
Please also refer to the "Identification" section and check if a paint identification mark is evident in the vehicle.

If the vehicle is not shown in ElsaPro as repaired, and the identification mark is not present, please conduct the instructions within the 'Work' section to completion

### Parts

Not Applicable

### Work



The Bentley ODIS-S Brand Version **MUST** be at least 2.3.5 (or higher)

## CAUTION

Before conducting the onward instructions, the operative **MUST** recheck the communication method in ODIS and ensure that DoIP is selected before proceeding. Within ODIS-S, perform the following:

- On the right hand side, select the "Admin" tile (Within 'Operating modes')
- Select "GFF sequence" (Within 'General information' section)
- Under the "Selection of Communication path" drop-down menu, select "Only permit DoIP communication".

## CAUTION

**DO NOT, UNDER ANY CIRCUMSTANCES, ATTEMPT TO CONDUCT THE SOFTWARE UPDATE VIA THE CAN NETWORK. ONLY DoIP SHOULD BE USED WHEN PERFORMING THE SVM UPDATE.**

## CAUTION

You **MUST ONLY** use the Diagnosis Interface VAS 6154 (WiFi Diagnostic Tool) in USB OPERATION or the CABLE-CONNECTED VAS 5055 for the reprogramming (updating) of the control units.

- If neither of these units are available, the VAS 5054 (A) may be used in USB MODE.
- **DO NOT** under any circumstances use a Bluetooth connection to conduct the reprogramming (updating) of any control units.

### Battery Charger

## CAUTION

**ONLY** Chargers that meet the approved specification on the Mandatory Equipment List (available on the Bentley Hub) **MUST** be used.

- The charger must be set to a mode where a **MINIMUM** of 90a is supplied to the battery during the process. Typically, this is known as 'Power Supply Mode' or 'DIAG+ Mode'.
- A voltage of exactly 14.8v must be set and maintained throughout the process.
- Please refer to the manual to ensure that these requirements are met before beginning any SVM update

### Obtaining Correct SVM Code

Due to the intricacies behind Baseline Integration Levels (BiL), you must identify which SVM code each VIN requires.

Please find the applicable VIN on the attached "applicable\_svm\_code" document.

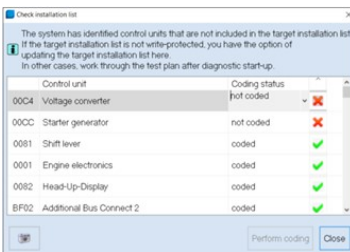
Note down the associated SVM code from the SVM Code column.

Keep note of this SVM code as you will be required to enter this into ODIS-S, later on in the procedure.

### Preparation Before Update

Conduct a full guided fault find of the vehicle.

If a 'Check Installation List' pop-up appears, select 'close' (see below image)



Referring to TPI 2075920, address any unknown faults **BEFORE** conducting any of the below updates.

### SVM Update

## WARNING

**Hybrid Vehicles use a High Voltage System and therefore MUST ONLY be work on by suitable personnel**

## CAUTION

During the update, switch off all unnecessary consumers. For example, ventilation, seat heaters, interior illumination, exterior lights etc.

1. Ensure that the correct battery charger is connected to the vehicle. – Refer to the “Battery Charger” section above.
2. Select the Special Functions tab
  - a. Select ‘SVM – Code Input’
  - b. Select ‘Perform Test’
  - c. Enter the applicable SVM code (as per the “Obtaining Correct SVM Code” section)
3. Allow the test to run until completion.
4. If you encounter any errors during the update, please raise a FULL DISS query stating the error encountered whilst also ensuring that the latest GFF log is uploaded online.
5. After completion of the update, perform the following
  - a. Turn off the ignition,
  - b. Remove all equipment from the car (Diagnostic tester/dongle, battery charger, keys)
  - c. Close all doors, windows, bonnet and boot lid
  - d. Lock the vehicle and allow the vehicle to perform a CAN-BUS Sleep (wait 10 minutes).
6. After 30 minutes, unlock and open the driver’s door. Turn on the ignition, re-connect the battery charger and diagnostic dongle.
7. Re-run guided fault finding and clear DTCs. If any faults are present, refer to TPI 2075920. If any of the faults present are non-sporadic, please raise a full DISS query with a full GFF log uploaded online stating the error encountered.

## Identification

Once the applicable action has been conducted, the operative must submit a warranty claim as this will show the service campaign action as complete within Elsa Pro “Repair history”.

You must also add a yellow paint mark as per the picture below.



<b>VIN</b>	<b>SVM Code</b>
SCBCR2ZG0SC019974	372521V401
SCBCR2ZG1SC019904	372521V401
SCBCR2ZG3SC020116	372521V401
SCBCR2ZG5SC019971	372521V401
SCBCR2ZG8SC020063	372521V401
SCBDR4ZG1SC019997	372521V401
SCBDR4ZG6SC019929	372521V401
SCBDR4ZG6SC020045	372521V401
SCBDR4ZG7SC019969	372521V401
SCBCJ13S2SC021160	372521V401
SCBCR2ZG0SC020042	372521V401
SCBCR2ZG0SC020087	372521V401
SCBCR2ZG0SC020123	372521V401
SCBCR2ZG0SC020154	372521V401
SCBCR2ZG0SC020168	372521V401
SCBCR2ZG0SC020185	372521V401
SCBCR2ZG0SC020218	372521V401
SCBCR2ZG0SC020266	372521V401
SCBCR2ZG0SC020347	372521V401
SCBCR2ZG0SC020610	372521V401
SCBCR2ZG0SC020803	372521V401
SCBCR2ZG0SC021143	372521V401
SCBCR2ZG0SC021174	372521V401
SCBCR2ZG1SC020003	372521V401
SCBCR2ZG1SC020051	372521V401
SCBCR2ZG1SC020244	372521V401
SCBCR2ZG1SC020938	372521V401
SCBCR2ZG1SC021023	372521V401
SCBCR2ZG1SC021152	372521V401
SCBCR2ZG1SC021166	372521V401
SCBCR2ZG1SC021250	372521V401
SCBCR2ZG2SC019913	372521V401
SCBCR2ZG2SC019958	372521V401
SCBCR2ZG2SC020009	372521V401
SCBCR2ZG2SC020012	372521V401
SCBCR2ZG2SC020088	372521V401
SCBCR2ZG2SC020107	372521V401
SCBCR2ZG2SC020155	372521V401
SCBCR2ZG2SC020284	372521V401
SCBCR2ZG2SC020298	372521V401
SCBCR2ZG2SC020866	372521V401
SCBCR2ZG2SC021063	372521V401
SCBCR2ZG2SC021127	372521V401

SCBCR2ZG2SC021225	372521V401
SCBCR2ZG3SC019922	372521V401
SCBCR2ZG3SC019984	372521V401
SCBCR2ZG3SC019998	372521V401
SCBCR2ZG3SC020035	372521V401
SCBCR2ZG3SC020049	372521V401
SCBCR2ZG3SC020097	372521V401
SCBCR2ZG3SC020424	372521V401
SCBCR2ZG3SC020438	372521V401
SCBCR2ZG3SC020505	372521V401
SCBCR2ZG4SC019900	372521V401
SCBCR2ZG4SC019914	372521V401
SCBCR2ZG4SC019928	372521V401
SCBCR2ZG4SC019945	372521V401
SCBCR2ZG4SC019976	372521V401
SCBCR2ZG4SC019993	372521V401
SCBCR2ZG4SC020027	372521V401
SCBCR2ZG4SC020058	372521V401
SCBCR2ZG4SC020108	372521V401
SCBCR2ZG4SC020139	372521V401
SCBCR2ZG4SC020142	372521V401
SCBCR2ZG4SC020190	372521V401
SCBCR2ZG4SC020318	372521V401
SCBCR2ZG4SC020383	372521V401
SCBCR2ZG4SC020478	372521V401
SCBCR2ZG4SC020531	372521V401
SCBCR2ZG4SC020710	372521V401
SCBCR2ZG4SC021114	372521V401
SCBCR2ZG4SC021193	372521V401
SCBCR2ZG5SC019968	372521V401
SCBCR2ZG5SC020022	372521V401
SCBCR2ZG5SC020053	372521V401
SCBCR2ZG5SC020067	372521V401
SCBCR2ZG5SC020103	372521V401
SCBCR2ZG5SC020134	372521V401
SCBCR2ZG5SC020148	372521V401
SCBCR2ZG5SC020165	372521V401
SCBCR2ZG5SC020182	372521V401
SCBCR2ZG5SC020683	372521V401
SCBCR2ZG5SC020828	372521V401
SCBCR2ZG5SC020912	372521V401
SCBCR2ZG5SC020943	372521V401
SCBCR2ZG5SC020991	372521V401
SCBCR2ZG6SC018165	372521V401

SCBCR2ZG6SC019963	372521V401
SCBCR2ZG6SC020014	372521V401
SCBCR2ZG6SC020076	372521V401
SCBCR2ZG6SC020093	372521V401
SCBCR2ZG6SC020174	372521V401
SCBCR2ZG6SC020269	372521V401
SCBCR2ZG6SC020336	372521V401
SCBCR2ZG6SC020515	372521V401
SCBCR2ZG6SC021020	372521V401
SCBCR2ZG6SC021129	372521V401
SCBCR2ZG6SC021227	372521V401
SCBCR2ZG7SC019910	372521V401
SCBCR2ZG7SC019938	372521V401
SCBCR2ZG7SC019955	372521V401
SCBCR2ZG7SC020006	372521V401
SCBCR2ZG7SC020121	372521V401
SCBCR2ZG7SC020152	372521V401
SCBCR2ZG7SC020300	372521V401
SCBCR2ZG7SC020555	372521V401
SCBCR2ZG7SC020619	372521V401
SCBCR2ZG7SC020782	372521V401
SCBCR2ZG7SC020863	372521V401
SCBCR2ZG7SC020927	372521V401
SCBCR2ZG7SC020944	372521V401
SCBCR2ZG7SC020992	372521V401
SCBCR2ZG7SC021091	372521V401
SCBCR2ZG7SC021141	372521V401
SCBCR2ZG8SC020001	372521V401
SCBCR2ZG8SC020015	372521V401
SCBCR2ZG8SC020127	372521V401
SCBCR2ZG8SC020192	372521V401
SCBCR2ZG8SC020256	372521V401
SCBCR2ZG8SC020306	372521V401
SCBCR2ZG8SC020452	372521V401
SCBCR2ZG8SC020838	372521V401
SCBCR2ZG8SC020967	372521V401
SCBCR2ZG8SC021004	372521V401
SCBCR2ZG8SC021035	372521V401
SCBCR2ZG8SC021116	372521V401
SCBCR2ZG8SC021164	372521V401
SCBCR2ZG8SC021181	372521V401
SCBCR2ZG9SC019908	372521V401
SCBCR2ZG9SC019939	372521V401
SCBCR2ZG9SC019942	372521V401

SCBCR2ZG9SC019987	372521V401
SCBCR2ZG9SC019990	372521V401
SCBCR2ZG9SC020038	372521V401
SCBCR2ZG9SC020072	372521V401
SCBCR2ZG9SC020119	372521V401
SCBCR2ZG9SC020170	372521V401
SCBCR2ZG9SC020489	372521V401
SCBCR2ZG9SC020525	372521V401
SCBCR2ZG9SC021058	372521V401
SCBCR2ZG9SC021173	372521V401
SCBCR2ZGXSC019948	372521V401
SCBCR2ZGXSC019951	372521V401
SCBCR2ZGXSC019979	372521V401
SCBCR2ZGXSC020081	372521V401
SCBCR2ZGXSC020100	372521V401
SCBCR2ZGXSC020131	372521V401
SCBCR2ZGXSC020145	372521V401
SCBCR2ZGXSC020162	372521V401
SCBCR2ZGXSC020193	372521V401
SCBCR2ZGXSC020470	372521V401
SCBCR2ZGXSC020484	372521V401
SCBCR2ZGXSC020825	372521V401
SCBCR2ZGXSC020890	372521V401
SCBCR2ZGXSC020954	372521V401
SCBCR2ZGXSC021067	372521V401
SCBCR2ZGXSC021070	372521V401
SCBCR2ZGXSC021134	372521V401
SCBCR2ZGXSC021215	372521V401
SCBDR4ZG0SC019912	372521V401
SCBDR4ZG0SC019991	372521V401
SCBDR4ZG0SC020011	372521V401
SCBDR4ZG0SC020073	372521V401
SCBDR4ZG0SC020106	372521V401
SCBDR4ZG0SC020199	372521V401
SCBDR4ZG0SC020221	372521V401
SCBDR4ZG0SC020297	372521V401
SCBDR4ZG0SC020509	372521V401
SCBDR4ZG0SC020641	372521V401
SCBDR4ZG0SC020669	372521V401
SCBDR4ZG1SC019935	372521V401
SCBDR4ZG1SC019949	372521V401
SCBDR4ZG1SC019983	372521V401
SCBDR4ZG1SC020048	372521V401
SCBDR4ZG1SC020065	372521V401

SCBDR4ZG1SC020096	372521V401
SCBDR4ZG1SC020115	372521V401
SCBDR4ZG1SC020129	372521V401
SCBDR4ZG1SC020132	372521V401
SCBDR4ZG1SC020180	372521V401
SCBDR4ZG1SC020194	372521V401
SCBDR4ZG1SC020213	372521V401
SCBDR4ZG1SC020230	372521V401
SCBDR4ZG1SC020289	372521V401
SCBDR4ZG1SC020731	372521V401
SCBDR4ZG1SC020812	372521V401
SCBDR4ZG1SC020874	372521V401
SCBDR4ZG1SC020888	372521V401
SCBDR4ZG1SC021040	372521V401
SCBDR4ZG2SC019975	372521V401
SCBDR4ZG2SC020026	372521V401
SCBDR4ZG2SC020043	372521V401
SCBDR4ZG2SC020124	372521V401
SCBDR4ZG2SC020138	372521V401
SCBDR4ZG2SC020141	372521V401
SCBDR4ZG2SC020169	372521V401
SCBDR4ZG2SC020186	372521V401
SCBDR4ZG2SC020253	372521V401
SCBDR4ZG2SC020334	372521V401
SCBDR4ZG2SC020365	372521V401
SCBDR4ZG2SC020415	372521V401
SCBDR4ZG2SC020530	372521V401
SCBDR4ZG2SC020575	372521V401
SCBDR4ZG2SC020849	372521V401
SCBDR4ZG2SC020852	372521V401
SCBDR4ZG2SC020883	372521V401
SCBDR4ZG2SC021094	372521V401
SCBDR4ZG2SC021161	372521V401
SCBDR4ZG3SC019953	372521V401
SCBDR4ZG3SC020021	372521V401
SCBDR4ZG3SC020083	372521V401
SCBDR4ZG3SC020102	372521V401
SCBDR4ZG3SC020147	372521V401
SCBDR4ZG3SC020164	372521V401
SCBDR4ZG3SC020228	372521V401
SCBDR4ZG3SC020245	372521V401
SCBDR4ZG3SC020598	372521V401
SCBDR4ZG3SC020794	372521V401
SCBDR4ZG3SC020844	372521V401

SCBDR4ZG3SC021136	372521V401
SCBDR4ZG3SC021170	372521V401
SCBDR4ZG3SC021248	372521V401
SCBDR4ZG4SC019962	372521V401
SCBDR4ZG4SC020075	372521V401
SCBDR4ZG4SC020089	372521V401
SCBDR4ZG4SC020092	372521V401
SCBDR4ZG4SC020156	372521V401
SCBDR4ZG4SC020223	372521V401
SCBDR4ZG4SC020299	372521V401
SCBDR4ZG4SC020559	372521V401
SCBDR4ZG4SC020836	372521V401
SCBDR4ZG4SC021226	372521V401
SCBDR4ZG5SC019906	372521V401
SCBDR4ZG5SC019923	372521V401
SCBDR4ZG5SC019937	372521V401
SCBDR4ZG5SC020120	372521V401
SCBDR4ZG5SC020196	372521V401
SCBDR4ZG5SC020294	372521V401
SCBDR4ZG5SC020313	372521V401
SCBDR4ZG5SC020344	372521V401
SCBDR4ZG5SC020389	372521V401
SCBDR4ZG5SC020635	372521V401
SCBDR4ZG5SC020859	372521V401
SCBDR4ZG5SC020862	372521V401
SCBDR4ZG5SC020893	372521V401
SCBDR4ZG5SC020909	372521V401
SCBDR4ZG5SC021123	372521V401
SCBDR4ZG5SC021140	372521V401
SCBDR4ZG6SC019932	372521V401
SCBDR4ZG6SC019946	372521V401
SCBDR4ZG6SC019977	372521V401
SCBDR4ZG6SC019980	372521V401
SCBDR4ZG6SC019994	372521V401
SCBDR4ZG6SC020000	372521V401
SCBDR4ZG6SC020059	372521V401
SCBDR4ZG6SC020062	372521V401
SCBDR4ZG6SC020112	372521V401
SCBDR4ZG6SC020126	372521V401
SCBDR4ZG6SC020238	372521V401
SCBDR4ZG6SC020255	372521V401
SCBDR4ZG6SC020451	372521V401
SCBDR4ZG6SC020580	372521V401
SCBDR4ZG6SC020630	372521V401

SCBDR4ZG6SC020658	372521V401
SCBDR4ZG6SC020806	372521V401
SCBDR4ZG6SC020871	372521V401
SCBDR4ZG6SC020899	372521V401
SCBDR4ZG6SC021034	372521V401
SCBDR4ZG6SC021177	372521V401
SCBDR4ZG6SC021194	372521V401
SCBDR4ZG7SC019941	372521V401
SCBDR4ZG7SC019986	372521V401
SCBDR4ZG7SC020037	372521V401
SCBDR4ZG7SC020068	372521V401
SCBDR4ZG7SC020071	372521V401
SCBDR4ZG7SC020099	372521V401
SCBDR4ZG7SC020118	372521V401
SCBDR4ZG7SC020183	372521V401
SCBDR4ZG7SC020233	372521V401
SCBDR4ZG7SC020278	372521V401
SCBDR4ZG7SC020281	372521V401
SCBDR4ZG7SC020328	372521V401
SCBDR4ZG7SC020362	372521V401
SCBDR4ZG7SC020538	372521V401
SCBDR4ZG7SC020569	372521V401
SCBDR4ZG7SC020751	372521V401
SCBDR4ZG7SC020796	372521V401
SCBDR4ZG7SC020801	372521V401
SCBDR4ZG7SC020913	372521V401
SCBDR4ZG7SC021172	372521V401
SCBDR4ZG8SC019902	372521V401
SCBDR4ZG8SC020029	372521V401
SCBDR4ZG8SC020080	372521V401
SCBDR4ZG8SC020094	372521V401
SCBDR4ZG8SC020144	372521V401
SCBDR4ZG8SC020158	372521V401
SCBDR4ZG8SC020161	372521V401
SCBDR4ZG8SC020175	372521V401
SCBDR4ZG8SC020189	372521V401
SCBDR4ZG8SC020208	372521V401
SCBDR4ZG8SC020242	372521V401
SCBDR4ZG8SC020645	372521V401
SCBDR4ZG8SC020869	372521V401
SCBDR4ZG8SC020922	372521V401
SCBDR4ZG8SC021214	372521V401
SCBDR4ZG8SC021228	372521V401
SCBDR4ZG9SC019956	372521V401

SCBDR4ZG9SC020007	372521V401
SCBDR4ZG9SC020024	372521V401
SCBDR4ZG9SC020041	372521V401
SCBDR4ZG9SC020086	372521V401
SCBDR4ZG9SC020136	372521V401
SCBDR4ZG9SC020153	372521V401
SCBDR4ZG9SC020167	372521V401
SCBDR4ZG9SC020251	372521V401
SCBDR4ZG9SC020301	372521V401
SCBDR4ZG9SC020332	372521V401
SCBDR4ZG9SC020492	372521V401
SCBDR4ZG9SC020573	372521V401
SCBDR4ZG9SC020587	372521V401
SCBDR4ZG9SC020590	372521V401
SCBDR4ZG9SC020721	372521V401
SCBDR4ZG9SC020833	372521V401
SCBDR4ZG9SC021142	372521V401
SCBDR4ZG9SC021223	372521V401
SCBDR4ZGXSC019898	372521V401
SCBDR4ZGXSC019920	372521V401
SCBDR4ZGXSC019965	372521V401
SCBDR4ZGXSC020016	372521V401
SCBDR4ZGXSC020033	372521V401
SCBDR4ZGXSC020274	372521V401
SCBDR4ZGXSC020291	372521V401
SCBDR4ZGXSC020338	372521V401
SCBDR4ZGXSC020808	372521V401
SCBDR4ZGXSC021182	372521V401
SCBDR4ZGXSC021201	372521V401
SCBCJ13S3SC021233	372521V402
SCBCR2ZG1SC021149	372521V402
SCBCR2ZG1SC021197	372521V402
SCBCR2ZG2SC020060	372521V402
SCBCR2ZG5SC021042	372521V402
SCBCR2ZG5SC021137	372521V402
SCBCR2ZG6SC020952	372521V402
SCBCR2ZG9SC021030	372521V402
SCBDR4ZG1SC021121	372521V402
SCBDR4ZG4SC020755	372521V402
SCBDR4ZG4SC021243	372521V402
SCBDR4ZGXSC021179	372521V402
SCBDR4ZGXSC021246	372521V402
SCBCR2ZG0SC017898	372521V405
SCBCR2ZG1SC018123	372521V405

SCBCR2ZG1SC018140	372521V405
SCBCR2ZG1SC018154	372521V405
SCBCR2ZG2SC018129	372521V405
SCBCR2ZG3SC018124	372521V405
SCBCR2ZG3SC018141	372521V405
SCBCR2ZG3SC018155	372521V405
SCBCR2ZG4SC018133	372521V405
SCBCR2ZG5SC018142	372521V405
SCBCR2ZG6SC018117	372521V405
SCBCR2ZG6SC018120	372521V405
SCBCR2ZG6SC018148	372521V405
SCBCR2ZG7SC018157	372521V405
SCBCR2ZG7SC018160	372521V405
SCBCR2ZG8SC018149	372521V405
SCBCR2ZG8SC018152	372521V405
SCBCR2ZG8SC018166	372521V405
SCBCR2ZG9SC018113	372521V405
SCBCR2ZG9SC018130	372521V405
SCBCR2ZGXSC018136	372521V405
SCBCR2ZGXSC018167	372521V405
SCBBR6ZG0SC020013	373521V403
SCBBR6ZG0SC020030	373521V403
SCBBR6ZG0SC020111	373521V403
SCBBR6ZG0SC020657	373521V403
SCBBR6ZG0SC021209	373521V403
SCBBR6ZG0SC021212	373521V403
SCBBR6ZG1SC019940	373521V403
SCBBR6ZG1SC019954	373521V403
SCBBR6ZG1SC019985	373521V403
SCBBR6ZG1SC019999	373521V403
SCBBR6ZG1SC020036	373521V403
SCBBR6ZG1SC020070	373521V403
SCBBR6ZG1SC020098	373521V403
SCBBR6ZG1SC020117	373521V403
SCBBR6ZG1SC020179	373521V403
SCBBR6ZG1SC020358	373521V403
SCBBR6ZG1SC020781	373521V403
SCBBR6ZG2SC019901	373521V403
SCBBR6ZG2SC019915	373521V403
SCBBR6ZG2SC020028	373521V403
SCBBR6ZG2SC020160	373521V403
SCBBR6ZG2SC020188	373521V403
SCBBR6ZG2SC020191	373521V403
SCBBR6ZG2SC021180	373521V403

SCBBR6ZG3SC019907	373521V403
SCBBR6ZG3SC019924	373521V403
SCBBR6ZG3SC020023	373521V403
SCBBR6ZG3SC020054	373521V403
SCBBR6ZG3SC020085	373521V403
SCBBR6ZG3SC020135	373521V403
SCBBR6ZG3SC020149	373521V403
SCBBR6ZG4SC019947	373521V403
SCBBR6ZG4SC019950	373521V403
SCBBR6ZG4SC019964	373521V403
SCBBR6ZG4SC019978	373521V403
SCBBR6ZG4SC020077	373521V403
SCBBR6ZG4SC020659	373521V403
SCBBR6ZG4SC021133	373521V403
SCBBR6ZG4SC021150	373521V403
SCBBR6ZG5SC019911	373521V403
SCBBR6ZG5SC019973	373521V403
SCBBR6ZG5SC020010	373521V403
SCBBR6ZG5SC020105	373521V403
SCBBR6ZG5SC021237	373521V403
SCBBR6ZG6SC019903	373521V403
SCBBR6ZG6SC019934	373521V403
SCBBR6ZG6SC019982	373521V403
SCBBR6ZG6SC019996	373521V403
SCBBR6ZG6SC020002	373521V403
SCBBR6ZG6SC020047	373521V403
SCBBR6ZG6SC020064	373521V403
SCBBR6ZG6SC020128	373521V403
SCBBR6ZG6SC020713	373521V403
SCBBR6ZG6SC021036	373521V403
SCBBR6ZG6SC021196	373521V403
SCBBR6ZG6SC021232	373521V403
SCBBR6ZG7SC019909	373521V403
SCBBR6ZG7SC019943	373521V403
SCBBR6ZG7SC019988	373521V403
SCBBR6ZG7SC020008	373521V403
SCBBR6ZG7SC020056	373521V403
SCBBR6ZG7SC020140	373521V403
SCBBR6ZG7SC020171	373521V403
SCBBR6ZG7SC020753	373521V403
SCBBR6ZG7SC021157	373521V403
SCBBR6ZG7SC021191	373521V403
SCBBR6ZG8SC019921	373521V403
SCBBR6ZG8SC019952	373521V403

SCBBR6ZG8SC019966	373521V403
SCBBR6ZG8SC020017	373521V403
SCBBR6ZG8SC020020	373521V403
SCBBR6ZG8SC020034	373521V403
SCBBR6ZG8SC020079	373521V403
SCBBR6ZG8SC020163	373521V403
SCBBR6ZG8SC020177	373521V403
SCBBR6ZG8SC020406	373521V403
SCBBR6ZG8SC021202	373521V403
SCBBR6ZG9SC019927	373521V403
SCBBR6ZG9SC019930	373521V403
SCBBR6ZG9SC019944	373521V403
SCBBR6ZG9SC019961	373521V403
SCBBR6ZG9SC019989	373521V403
SCBBR6ZG9SC019992	373521V403
SCBBR6ZG9SC020091	373521V403
SCBBR6ZG9SC020320	373521V403
SCBBR6ZG9SC020785	373521V403
SCBBR6ZG9SC021130	373521V403
SCBBR6ZG9SC021189	373521V403
SCBBR6ZGXSC019905	373521V403
SCBBR6ZGXSC019936	373521V403
SCBBR6ZGXSC019970	373521V403
SCBBR6ZGXSC020004	373521V403
SCBBR6ZGXSC020617	373521V403
SCBBR6ZGXSC021234	373521V403
SCBBR6ZG3SC021169	373521V404
SCBBR6ZG7SC021241	373521V404
SCBBR6ZGXSC021217	373521V404
SCBCR2ZG3SC018169	N/A
SCBCR2ZG5SC018156	N/A
SCBCR2ZG0SC018162	N/A
SCBCR2ZG7SC018126	N/A
SCBCR2ZG2SC018020	N/A
SCBCR2ZG2SC018146	N/A
SCBCR2ZG4SC018021	N/A
SCBCR2ZG0SC018114	N/A
SCBCR2ZG0SC018128	N/A
SCBCR2ZG0SC018131	N/A
SCBCR2ZG0SC018145	N/A
SCBCR2ZG0SC018159	N/A
SCBCR2ZG0SC021207	N/A
SCBCR2ZG1SC018137	N/A
SCBCR2ZG1SC018168	N/A

SCBCR2ZG1SC020082	N/A
SCBCR2ZG1SC020101	N/A
SCBCR2ZG1SC020857	N/A
SCBCR2ZG2SC018115	N/A
SCBCR2ZG2SC018132	N/A
SCBCR2ZG2SC018163	N/A
SCBCR2ZG2SC021158	N/A
SCBCR2ZG2SC021242	N/A
SCBCR2ZG3SC018138	N/A
SCBCR2ZG3SC020567	N/A
SCBCR2ZG4SC018116	N/A
SCBCR2ZG4SC018147	N/A
SCBCR2ZG4SC018150	N/A
SCBCR2ZG4SC018164	N/A
SCBCR2ZG5SC018125	N/A
SCBCR2ZG5SC018139	N/A
SCBCR2ZG6SC018134	N/A
SCBCR2ZG6SC018151	N/A
SCBCR2ZG6SC020031	N/A
SCBCR2ZG6SC021101	N/A
SCBCR2ZG7SC021043	N/A
SCBCR2ZG8SC018118	N/A
SCBCR2ZG8SC018121	N/A
SCBCR2ZG8SC018135	N/A
SCBCR2ZG8SC019933	N/A
SCBCR2ZG9SC018127	N/A
SCBCR2ZG9SC018144	N/A
SCBCR2ZG9SC018158	N/A
SCBCR2ZG9SC018161	N/A
SCBCR2ZG9SC020069	N/A
SCBCR2ZGXSC018119	N/A
SCBCR2ZGXSC018122	N/A
SCBCR2ZGXSC018153	N/A
SCBCR2ZGXSC020114	N/A
SCBCR2ZGXSC020579	N/A
SCBDR4ZG0SC020865	N/A
SCBDR4ZG0SC021188	N/A
SCBDR4ZG1SC020499	N/A
SCBDR4ZG1SC020972	N/A
SCBDR4ZG2SC020172	N/A
SCBDR4ZG2SC021192	N/A
SCBDR4ZG3SC020052	N/A
SCBDR4ZG3SC020150	N/A
SCBDR4ZG4SC020822	N/A

SCBDR4ZG5SC020005	N/A
SCBDR4ZG5SC020215	N/A
SCBDR4ZG5SC021154	N/A
SCBDR4ZG5SC021218	N/A
SCBDR4ZG7SC019972	N/A
SCBDR4ZG7SC020815	N/A
SCBDR4ZG8SC020225	N/A
SCBDR4ZG8SC021231	N/A
SCBDR4ZG9SC020413	N/A
SCBDR4ZG9SC020461	N/A
SCBDR4ZG9SC020606	N/A
SCBDR4ZG9SC021125	N/A
SCBDR4ZGXSC020078	N/A
SCBDR4ZGXSC020324	N/A