

KARMA

Technical Service Bulletin

CC-25-70-01

MODEL: 2025 Karma Revero

DATE: April 2025

TITLE: Hood bump stop adjustment

PRIORITY: See List

MARKET REGION: North America

PURPOSE: Remedy for possible wind noise complaint and visible hood flutter while driving

50GEE4SL5SA000002	50GRE4SL1SA000032	50GRE4SL5SA000048
50GRE4SL7SA000021	50GEE4SL9SA000035	50GRE4SL3SA000050
50GRE4SL9SA000022	50GRE4SL0SA000037	50GRE4SL5SA000051
50GRE4SL2SA000024	50GRE4SL2SA000038	50GRE4SL7SA000052
50GRE4SL4SA000025	50GRE4SL4SA000039	50GRE4SL9SA000053
50GRE4SL6SA000026	50GRE4SL0SA000040	
50GRE4SL8SA000027	50GRE4SL6SA000043	
50GRE4SL1SA000029	50GRE4SL8SA000044	
50GRE4SL8SA000030	50GRE4SL3SA000047	



Karma Automotive Bulletins and service documents are intended for use by experienced and trained Technicians. If you lack the skills, tools, equipment and a suitable workshop for any procedure described in this document, we suggest you leave such repairs to a Karma retailer and service provider. See your service provider for advice on whether your vehicle may benefit from the information contained within this document. The information contained in the Karma Bulletin is accurate at the date of publication. However, Karma Automotive regularly updates technical information. Please check with your Karma Automotive Retailer and Karma Automotive service provider that the bulletin you intend to use contains the latest available information.

KARMA Technical Service Bulletin

CC-25-70-01

MODEL: 2025 Karma Revero

DATE: April 2025

TITLE: Hood bump stop adjustment

The Vehicle hood may require adjusting the bump stop depth and hinge set screws to remedy and prevent any complaint and prevent fluttering or noise. (fig 1). These fasteners need to have positive contact with the mating interface. It may involve several rounds of trials to reach an acceptable result. Using some modeling clay (such as "play dough") as pressure/contact indicator place it on the surface of the bump stop and set screw. Hinge Set Screws and Bump Stops are set with a little free travel. Plan to adjust and monitor when flutter occurs, to aid in adjusting using clay, or butyl, to see the "squish" and contact area of the hood and related closing stops.



Karma Automotive Bulletins and service documents are intended for use by experienced and trained Technicians. If you lack the skills, tools, equipment and a suitable workshop for any procedure described in this document, we suggest you leave such repairs to a Karma retailer and service provider. See your service provider for advice on whether your vehicle may benefit from the information contained within this document. The information contained in the Karma Bulletin is accurate at the date of publication. However, Karma Automotive regularly updates technical information. Please check with your Karma Automotive Retailer and Karma Automotive service provider that the bulletin you intend to use contains the latest available information.

KARMA Technical Service Bulletin

CC-25-70-01

MODEL: 2025 Karma Revero

DATE: April 2025

TITLE: Hood bump stop adjustment

1. Verify the hood in the closed position is flush with fenders and the leading (front edge) cannot be pulled upwards by hand (fig 2).



Adjust the front set screws first. Using a 11mm wrench turn the set screw to achieve the appropriate contact, all builds will display a degree of variation, each adjustment will be unique to each vehicle (fig 3a and fig 3b). Note if this has not been adjusted the set screw paint will make wrench engagement tight, using the boxed end to avoid slipping and damaging the vehicle (fig 3c).



Karma Automotive Bulletins and service documents are intended for use by experienced and trained Technicians. If you lack the skills, tools, equipment and a suitable workshop for any procedure described in this document, we suggest you leave such repairs to a Karma retailer and service provider. See your service provider for advice on whether your vehicle may benefit from the information contained within this document. The information contained in the Karma Bulletin is accurate at the date of publication. However, Karma Automotive regularly updates technical information. Please check with your Karma Automotive Retailer and Karma Automotive service provider that the bulletin you intend to use contains the latest available information.

KARMA Technical Service Bulletin

CC-25-70-01

MODEL: 2025 Karma Revero

DATE: April 2025

TITLE: Hood bump stop adjustment

The adjustment as mentioned can vary, even side to side, not the contact area on the hood underside circled in red (fig 4a). A small sticker placed here will help further gauge the contact and protect the paint here (fig 4b). Have some touch-up paint available to dress or paint the set screws after adjustment is complete. Any paint defects larger than a pencil eraser (7mm) please contact TSS with images of the defect for direction on how to proceed.

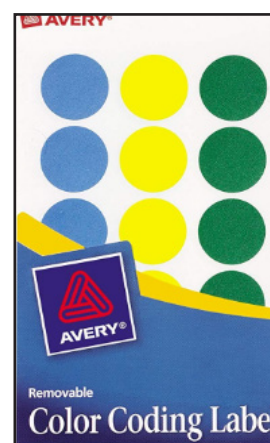
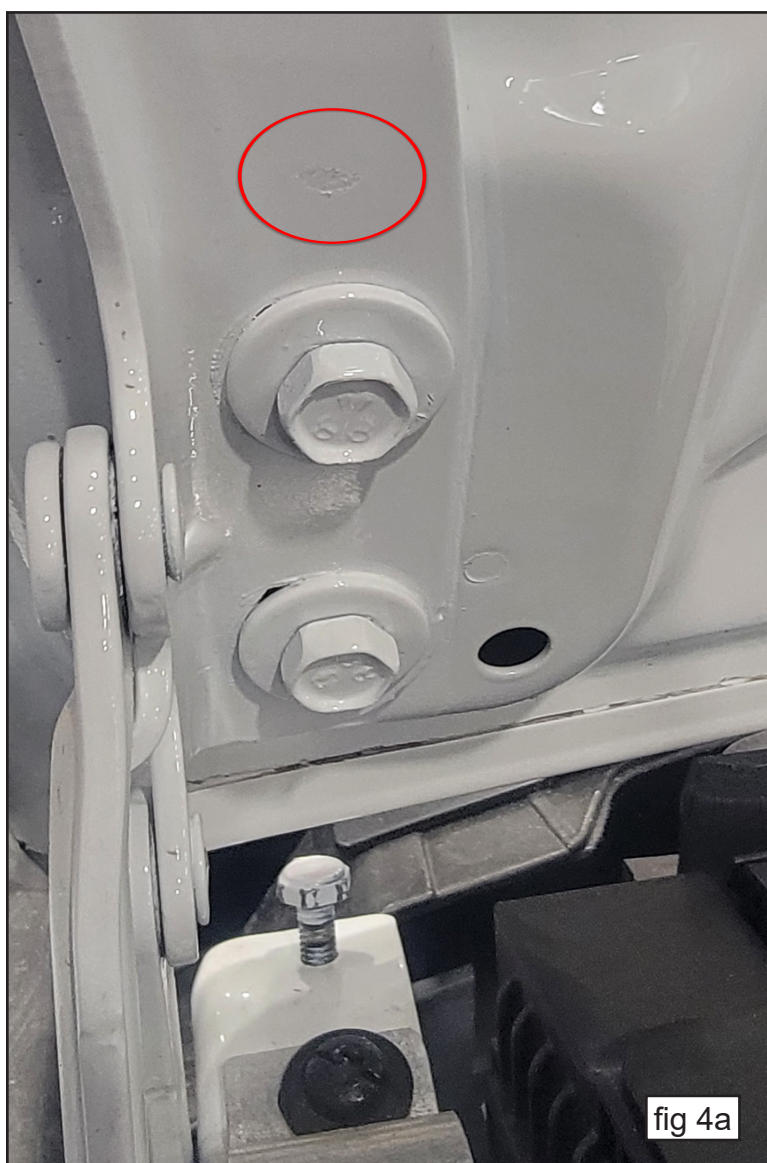
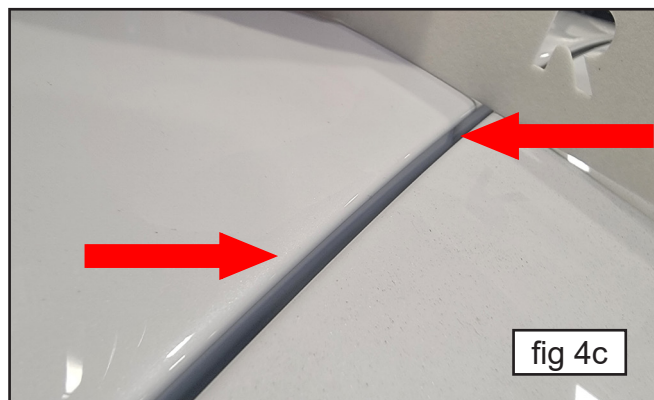


fig 4b

When setting the front set screw keep the hood to fender level or flush to each other-across the gap (fig.4c).



Karma Automotive Bulletins and service documents are intended for use by experienced and trained Technicians. If you lack the skills, tools, equipment and a suitable workshop for any procedure described in this document, we suggest you leave such repairs to a Karma retailer and service provider. See your service provider for advice on whether your vehicle may benefit from the information contained within this document. The information contained in the Karma Bulletin is accurate at the date of publication. However, Karma Automotive regularly updates technical information. Please check with your Karma Automotive Retailer and Karma Automotive service provider that the bulletin you intend to use contains the latest available information.

KARMA Technical Service Bulletin

CC-25-70-01

MODEL: 2025 Karma Revero

DATE: April 2025

TITLE: Hood bump stop adjustment

The rear of the hood, the windshield edge, has the rubber bump stops. These can be adjusted by hand, turning these to raise or lower the hood in the closed position (fig 5a and fig 5b).

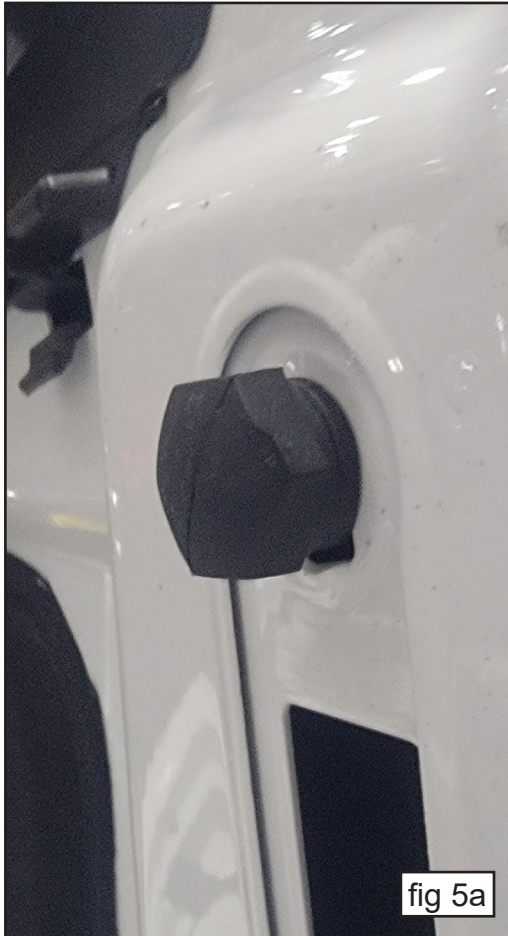


fig 5a



fig 5b

Again with the hood closed it should sit flush with fenders across the gap. When the hood is closed attempt to lift gently by hand. If the hood is secure and does not lift, test drive and verify.

Karma Automotive Bulletins and service documents are intended for use by experienced and trained Technicians. If you lack the skills, tools, equipment and a suitable workshop for any procedure described in this document, we suggest you leave such repairs to a Karma retailer and service provider. See your service provider for advice on whether your vehicle may benefit from the information contained within this document. The information contained in the Karma Bulletin is accurate at the date of publication. However, Karma Automotive regularly updates technical information. Please check with your Karma Automotive Retailer and Karma Automotive service provider that the bulletin you intend to use contains the latest available information.

KARMA Technical Service Bulletin

CC-25-70-01

MODEL: 2025 Karma Revero

DATE: April 2025

TITLE: Hood bump stop adjustment

PARTS REQUIRED:

PART NUMBER	DESCRIPTION	QTY
N/A		

SHOP SUPPLIES:

DESCRIPTION
N/A

SPECIAL TOOLS:

PART NUMBER	DESCRIPTION
N/A	

CAUSAL PART:

PART NUMBER	DESCRIPTION
C131164204000	Bump Stop

LABOR CODES: Claim per window adjusted.

CODE	DESCRIPTION	TIME	DEFECT CODE
70-30-01-05	Adjustment – Hood	0.7	70-30-15-13

SUBLET:

CODE	DESCRIPTION	AMOUNT
N/A		

WARRANTY DISPOSITION: This repair is covered under the New Vehicle Limited Warranty, in effect for four (4) years from the in-service date with 50,000 mileage limitation.

Karma Automotive Bulletins and service documents are intended for use by experienced and trained Technicians. If you lack the skills, tools, equipment and a suitable workshop for any procedure described in this document, we suggest you leave such repairs to a Karma retailer and service provider. See your service provider for advice on whether your vehicle may benefit from the information contained within this document. The information contained in the Karma Bulletin is accurate at the date of publication. However, Karma Automotive regularly updates technical information. Please check with your Karma Automotive Retailer and Karma Automotive service provider that the bulletin you intend to use contains the latest available information.