

Range Rover

- 22-25MY Range Rover
- 23-25MY RR Sport

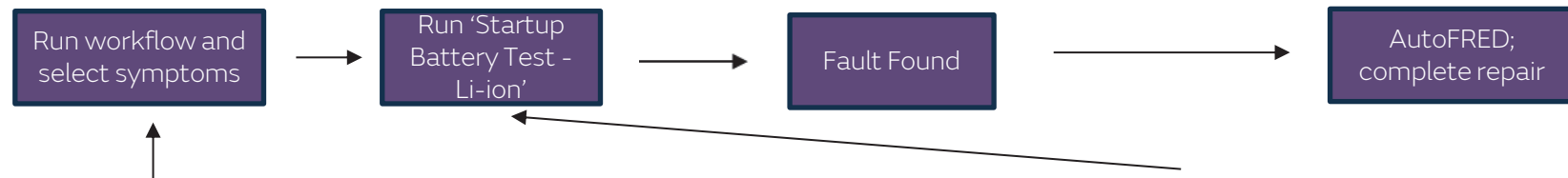
JLR

Defender

- 25MY Defender OCTA

UPCOMING AUTOFRED APPROVAL – SBU (STARTUP BATTERY UNIT)

- Starting **1st May**, the SBU (startup battery unit) aka Li-ion battery will be handled via AutoFRED for specific model callouts.
- The SBU is being handled via AutoFRED to establish trust in the workflow, as the workflow is designed to streamline battery diagnosis & repair.
- If there are stored codes, please run a workflow based on relevant symptom dropdowns.
- As the workflow is run, you will be prompted with a test plan titled “Startup Battery Test – Li-ion.” Please run this test plan.
- If the test plan finds a fault, you will be granted AutoFRED approval and may proceed with repairs.



- Electrical -> Battery and Charging System -> Low Voltage System (12V) -> Discharged Battery
- Electrical -> Battery and Charging System -> Low Voltage System (12V) -> Warning Message - Low Battery - Please Start Engine
- Electrical -> Battery and Charging System -> Low Voltage System (12V) -> Quiescent Drain
- Powertrain -> Engine -> Starting System -> Engine Will Not Crank
- Powertrain -> Engine -> Starting System -> Engine Cranks Slowly And Will Not Start
- Powertrain -> Engine -> Engine Performance -> Engine Not Starting
- Powertrain -> Engine -> Engine Performance -> Stop-Start Concern

TEST PLAN

NIT when relevance determined: 26-02-2025 13:42:12 GMT

Tests relevant to the chosen symptom and DTCs present on the vehicle are displayed below. If you require an alternative test, please "Select a Test" where a search function is available

Select a test

| | Recommended Action | Relevance | Changed | VCI Required | Actions | Results |
|---|--|------------------------|------------|--------------|---------|---------|
| 1 | Startup Battery Test - Li-ion | • Discharged Battery ▶ | 04-11-2024 | Yes | Run | |
| 2 | Vehicle 12V Circuit Recovery - Vehicle Not Responsive - Test | • Discharged Battery ▶ | - | No | Run | |