

Technical Service Bulletin

Mazda North American Operations
Irvine, CA 92618-2922



Subject: CLICKING, SQUEAKING OR RUBBING NOISE WHEN OPENING/CLOSING FRONT DOOR	Bulletin No.: 09-018/25
	Last Issued : 04/09/2025

BULLETIN NOTES

This bulletin supersedes the previously issued bulletin(s) listed below. The changes are noted in Red.

Previous TSBs:	Date(s) Issued:
09-022/23	07/26/23 and 05/16/23

APPLICABLE MODEL(S)/VINS

2024-2025 CX-90

2025 CX-70

DESCRIPTION

Some vehicles may exhibit a clicking, squeaking or rubbing noise when opening/closing the front door(s) of the vehicle.

- A clicking noise may be caused from the door connector sliding right and left, repeatedly connecting/half-connecting the connector tab, resulting in the stick-slip noise in the door side panel when opening/closing the front door.
- A squeaking or rubbing noise may be caused by the door harness interfering with the bottom edge of the door harness grommet when opening/closing the front door(s).

To eliminate these concerns, a mass production change is under study.

Customers having this concern should have their vehicle repaired using the following Repair Procedure.

REPAIR PROCEDURE

1. Verify the customer concern.
2. Perform the following Repair Procedures A (2024-2025 CX-90 and 2025 CX-70) and B (2024 CX-90 only).

CONSUMER NOTICE: The information and instructions in this bulletin are intended for use by skilled technicians. Mazda technicians utilize the proper tools/ equipment and take training to correctly and safely maintain Mazda vehicles. These instructions should not be performed by "do-it-yourselfers." Customers should not assume this bulletin applies to their vehicle or that their vehicle will develop the described concern. To determine if the information applies, customers should contact their nearest authorized Mazda dealership. Mazda North American Operations reserves the right to alter the specifications and contents of this bulletin without obligation or advance notice. All rights reserved. No part of this bulletin may be reproduced in any form or by any means, electronic or mechanical--including photocopying and recording and the use of any kind of information storage and retrieval system ---without permission in writing.

Procedure A (2024-2025 CX-90 and 2025 CX-70)

a. Cut the non-woven fabric (1) of Noise Repair Kit to the following sizes:

- Material: 0.25 mm non-woven fabric in Noise Repair Kit
- Size: 150 mm x 5 mm (6 inches x 0.2 inches) square (2)
- Quantities: 1 (one side) or 2 (both sides)

NOTE: Figures in the procedures show left side (same as right side).

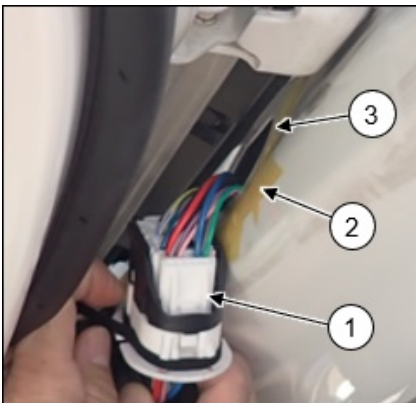


b. Pull out the door connector (1) from the body side panel (3) according to "Connector Disconnection Note" in the instructions on MGSS (FRONT DOOR REMOVAL/INSTALLATION) as shown in the figure below.

NOTE: Pulling out the connector (1) will make the repair easier.

CAUTION:

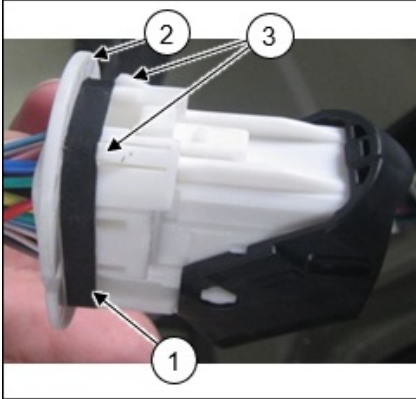
- Before pulling out the connector: If using a flathead screwdriver, attach protective tape (2) on the body side panel to prevent scratching.
- After pulling out the connector: Attach protective tape around the edge (3) of the body side panel hole.



CONSUMER NOTICE: The information and instructions in this bulletin are intended for use by skilled technicians. Mazda technicians utilize the proper tools/ equipment and take training to correctly and safely maintain Mazda vehicles. These instructions should not be performed by "do-it-yourselfers." Customers should not assume this bulletin applies to their vehicle or that their vehicle will develop the described concern. To determine if the information applies, customers should contact their nearest authorized Mazda dealership. Mazda North American Operations reserves the right to alter the specifications and contents of this bulletin without obligation or advance notice. All rights reserved. No part of this bulletin may be reproduced in any form or by any means, electronic or mechanical---including photocopying and recording and the use of any kind of information storage and retrieval system ---without permission in writing.

c. Attach the one piece of the non-woven fabric tape (1) along the brim (2) of the door connector once as shown in the figure. (one piece of the non-woven fabric for one side)

CAUTION: DO NOT attach the tape (1) on the tab (3).



d. Install the door connector in reverse order of removal.

NOTE: Adjusting the opening angle of the door will make the installation easier when inserting the door connector,

Procedure B (2024 CX-90 only)

a. Cut the non-woven fabric of Noise Repair Kit to the following sizes:

- Material: 0.25 mm non-woven fabric in Noise Repair Kit
- Size: 40 mm x 40 mm (1.6 inches x 1.6 inches) square
- Quantities: 1 (one side) or 2 (both sides)

b. Remove the door-electrical supply unit(s) according to the instructions on MGSS.

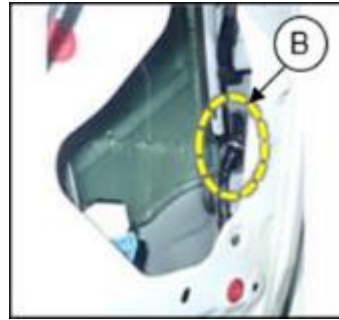
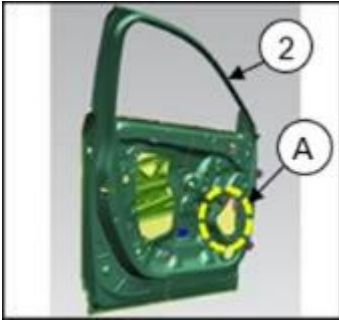
- (DRIVER-SIDE DOOR-ELECTRICAL SUPPLY UNIT REMOVAL/INSTALLATION)
- (PASSENGER-SIDE DOOR-ELECTRICAL SUPPLY UNIT REMOVAL/INSTALLATION)

CONSUMER NOTICE: The information and instructions in this bulletin are intended for use by skilled technicians. Mazda technicians utilize the proper tools/ equipment and take training to correctly and safely maintain Mazda vehicles. These instructions should not be performed by "do-it-yourselfers." Customers should not assume this bulletin applies to their vehicle or that their vehicle will develop the described concern. To determine if the information applies, customers should contact their nearest authorized Mazda dealership. Mazda North American Operations reserves the right to alter the specifications and contents of this bulletin without obligation or advance notice. All rights reserved. No part of this bulletin may be reproduced in any form or by any means, electronic or mechanical---including photocopying and recording and the use of any kind of information storage and retrieval system ---without permission in writing.

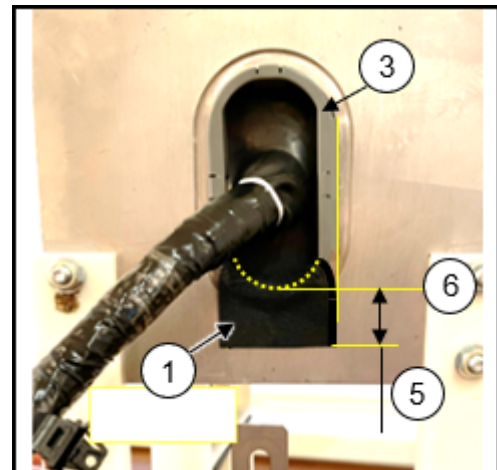
c. Apply the non-woven fabric(s)(1) to the front door(s)(2) according to the following images.

NOTE:

- Opening the front door glass (2) could facilitate the procedure. However, it can be also kept closed during the repair.
- The following image is the left side door with the window opened.
- If the fabric-applying area is wet, wipe it off before applying the fabric.



DETAIL OF A



DETAIL OF B

The harness interferes with the bottom edge of the door harness grommet.

Details for applying the non-woven fabric

- The right edge of the non-woven fabric must be aligned with the door harness grommet (3).
- Fold the remaining non-woven fabric over the other side of the hole.

(1) Non-woven fabric

(3) Door harness grommet

(5) 15 mm (0.6 inches) from the underside of the hole (6) of the door harness grommet (3)

d. Install the removed parts in the reverse order of removal.

3. Verify the repair by making sure any noise has disappeared when opening and closing the door.

CONSUMER NOTICE: The information and instructions in this bulletin are intended for use by skilled technicians. Mazda technicians utilize the proper tools/ equipment and take training to correctly and safely maintain Mazda vehicles. These instructions should not be performed by "do-it-yourselfers." Customers should not assume this bulletin applies to their vehicle or that their vehicle will develop the described concern. To determine if the information applies, customers should contact their nearest authorized Mazda dealership. Mazda North American Operations reserves the right to alter the specifications and contents of this bulletin without obligation or advance notice. All rights reserved. No part of this bulletin may be reproduced in any form or by any means, electronic or mechanical---including photocopying and recording and the use of any kind of information storage and retrieval system ---without permission in writing.

PARTS INFORMATION

Parts Number	Description	Qty.	Notes
TA01-76-100	Noise Repair Kit	0	Use 0.25 mm non-woven fabric only. NOTE: DO NOT throw the Noise Parts Kit away. It is considered a shop supply that repairs multiple vehicles for multiple issues and the cost is included in the Labor Time.

WARRANTY INFORMATION**NOTE:**

- This warranty information applies only to verified customer complaints on vehicles eligible for warranty repair.
- This repair will be covered under Mazda's New Vehicle Limited Warranty term.
- Additional diagnostic time cannot be claimed for this repair.
- DO NOT throw the Noise Parts Kit away. It is considered a shop supply that repairs multiple vehicles for multiple issues and the cost is included in the Labor Time.

Warranty Type	A
Symptom Code	82
Damage Code	9H
Part Number Main Cause	****-67-190 or ****-67-200 (HARNES, DOOR)
Quantity	0
Operation Number / Labor Hours:	<p style="text-align: center;"><u>Procedure A</u> XXX15ARX / 0.4 Hrs. (One side) XXX15BRX / 0.7 Hrs.(Both sides)</p> <p style="text-align: center;"><u>Procedure B</u> XXWBZBAX / 0.6 hrs. (Driver door) XXWBZDAX / 0.6 hrs. (Passenger door) XXWBZFAX / 0.9 hrs. (Both doors)</p>

CONSUMER NOTICE: The information and instructions in this bulletin are intended for use by skilled technicians. Mazda technicians utilize the proper tools/ equipment and take training to correctly and safely maintain Mazda vehicles. These instructions should not be performed by "do-it-yourselfers." Customers should not assume this bulletin applies to their vehicle or that their vehicle will develop the described concern. To determine if the information applies, customers should contact their nearest authorized Mazda dealership. Mazda North American Operations reserves the right to alter the specifications and contents of this bulletin without obligation or advance notice. All rights reserved. No part of this bulletin may be reproduced in any form or by any means, electronic or mechanical--including photocopying and recording and the use of any kind of information storage and retrieval system ---without permission in writing.