

Subject: Alternator Protection Process and Replacement Instruction

Bulletin type: FIX AS FAIL

Bulletin Nu: TS45-FC-2503

PQR Nu:500000007802

Rev Nu:

Ref. Nu: 700004638

Vehicle Model: TS45

Labor time: 3 hours

Release date: 07.03.2025

Expiration Of Validity :

What to do with off coming parts:

- Scrap
- Return
- Use with additional parts
- On consignment
- No off coming parts

What to do with outstanding parts of previous revision:

- Scrap
- Return
- Use with additional parts
- On consignment
- No off coming parts

Description of the modification: **Using protective cap and CRC SP400 on the alternator electrical sockets. If there is a failure on the alternator.** The service bulletin has been prepared for alternator replacement on the engines.

Liable: **RIDVAN CAN KARAKAYA**

Confirmation &Release: **CEMRE KILINÇ**

SAFETY INSTRUCTIONS

1. Mechanical Requested Dress Code

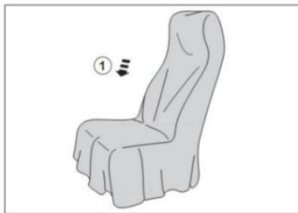


WARNING:

- Dress properly to avoid personal injury and damage to the vehicle

- ✓ Always wear protective clothing
- ✓ Do not wear any worn or loose-fitting clothing
- ✓ Remove jewelry before starting to work
- ✓ In case of long hair, use hairnet
- ✓ The illustration on the left shows some of the correct and incorrect clothing
- ✓ Sharp edged items should be avoided in order not to scratch vehicle (i.e. belts, watches, necklace)

2. Protect Seats when Mechanic Starts Working



- ✓ Seats, trimming, upholstery stuff and carpeting should be protected with appropriate coverings.

3. Welding on the Chassis

- a. Always disconnect the batteries (starting with the negative lead).
- b. Disconnect the connectors of electrical and electronic equipment (electronic control units, sensors and actuators) if they are less than 2 meters away from the chassis part to be welded or the earth terminal of the welding equipment.
- c. The earth terminal should never be attached to vehicle components such as engine, axles and springs. Arcing on these parts is not permitted, because of the risk of damage to bearings, springs, etc.
- d. The earth terminal must make good contact and be placed as close as possible to the part to be welded.
- e. Plastic pipes, rubber parts and parabolic springs should be well protected against welding spatter and temperatures higher than 70°.
- f. The contact switch must not be in the accessory or contact position. The contact key should be removed.
- g. Reconnect in reversed order of disconnecting. Ensure that a good earth connection is made between chassis, engine and cab.

ASSEMBLED PARTS

No	Part No	Part Name	Picture	Qty
1	RP198132	ALTERNATOR,DELCO O,REMY 55SI,250A		1 or 2
2	-	Protective cap		
3	-	CRC SP400 – Corrosion Inhibitor		

DISASSEMBLED PARTS

No	Part No	Part Name	Picture	Qty
1	RP198132	ALTERNATOR,DELCO, REMY 55SI,250A		1 or 2

NOTE : If the part has not been published in the system, record your usages and invoice it to Temsa.

This bulletin will only be made in TEMSA authorized services.

Current conditions must be photographed and recorded.

ATTENTION !

NOTE: IF THERE ARE NO COVERS ON THESE SIDES, USE COVERS LIKE THE FOLLOWING FOR THE TERMINALS TO AVOID AFFECTION BY WATER AND SALT.

Using protective cap and CRC SP400 on the alternator electrical sockets. Even if there isn't failure on the alternator.

It should be covered with this Cap and use sealant CRC SP400 to avoid false voltage inputs.



NOTE : IF THERE IS ALTERNATOR FAILURE, FOLLOWING THE STEPS FOR CHANGING THE ALTERNATOR.

TECHNICAL INSTRUCTIONS

Follow the instructions below;

- a) Take the vehicle to service and turn off the engine.
- b) Make sure you turn off the vehicle's ignition and switch before starting the process.

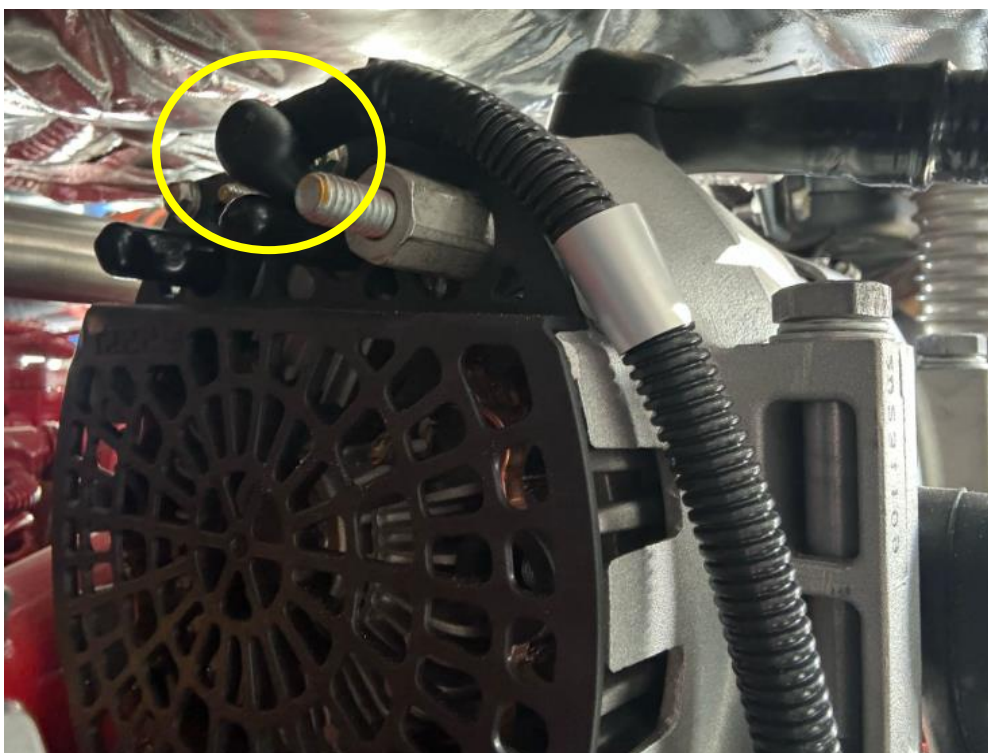


DISMANTLING PROCESS

- 1) Remove the starter main terminal (10 Nm, with 15mm socket)



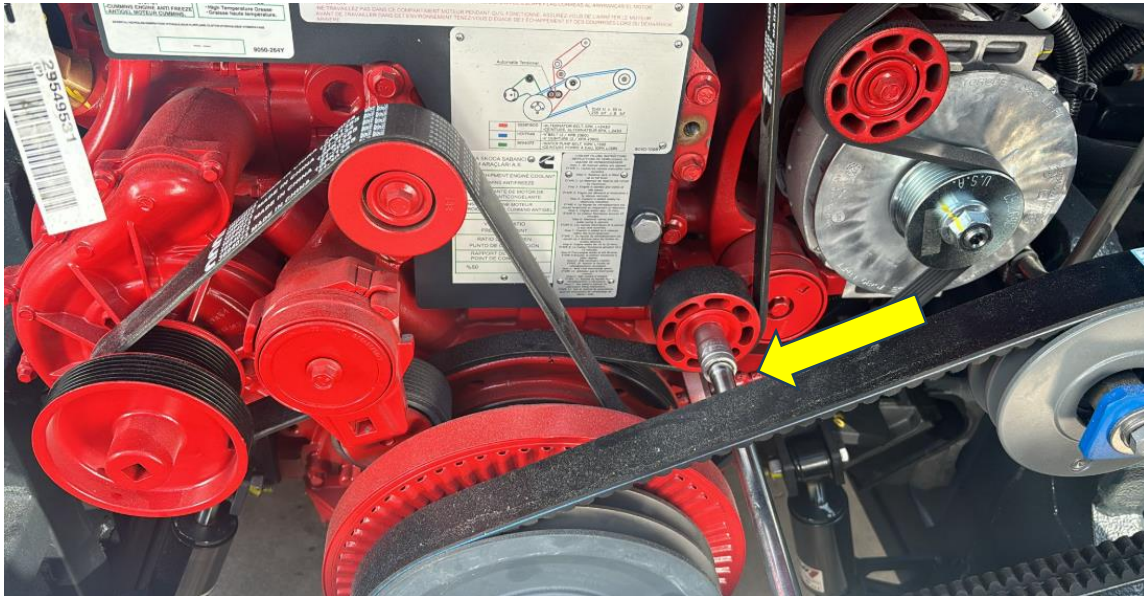
- 2) Remove the trigger cable (2 Nm, with 10 socket)



3) Remove chassis connections (with 11 socket)

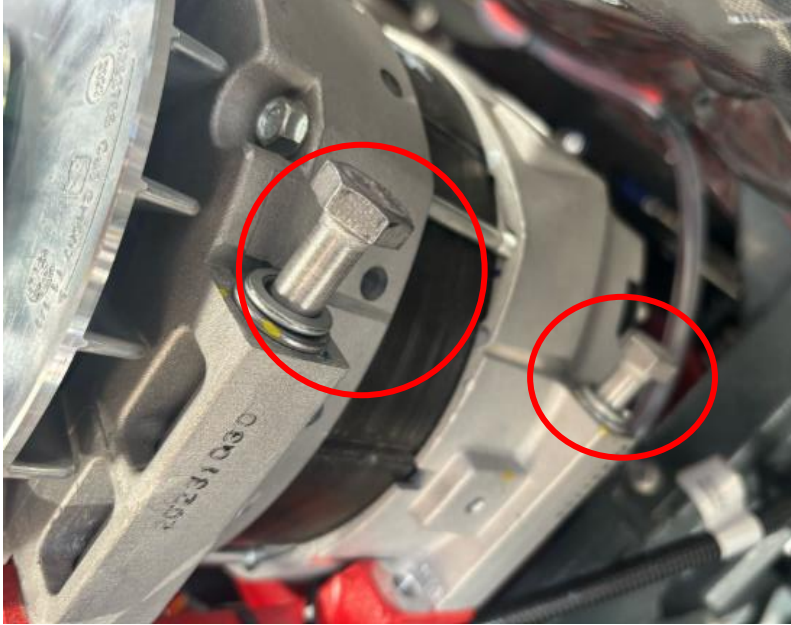


4) loosen the belt without removing it (with 15 socket)



5) Unscrew the screws (4 pieces) 65Nm with 17 socket





6) Remove the pulley (if it is to be removed) (with metric 24)



7) Unscrew the steering oil tank bolts (25 Nm)



8) Alternator disassembled image



ASSAMBLE PROCESS

1) Place the alternator in position.



2) Mount 4 screws in place (with 65Nm)





3) Mount the oil tank in place (with a 13 metric socket)



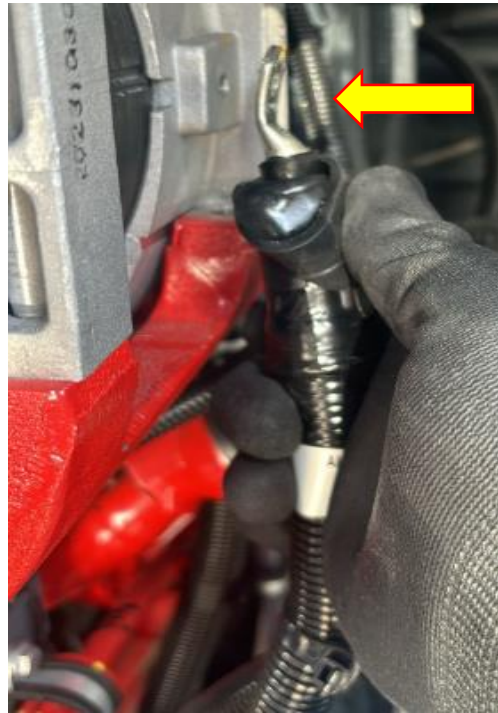
4) Install the pulley (with metric 24)



5) Install the trigger cable (10 socket)



6) Assemble the starter main terminal



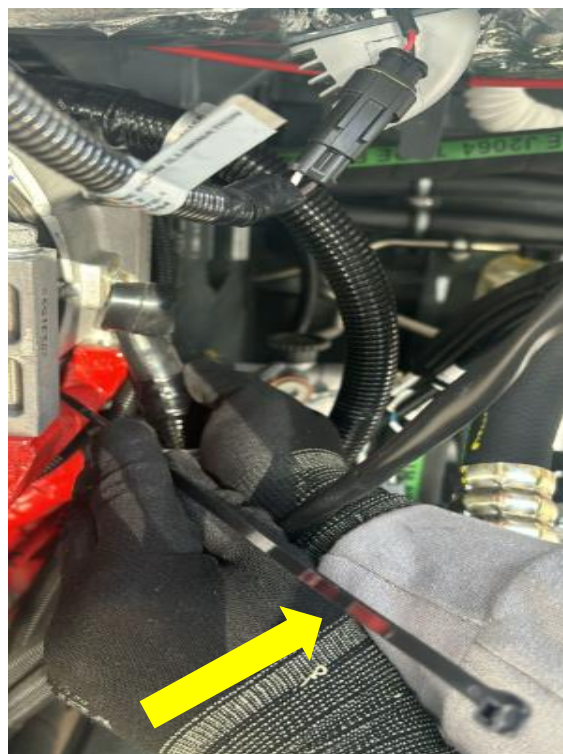
7) Install chassis connections (with 11 sockets)

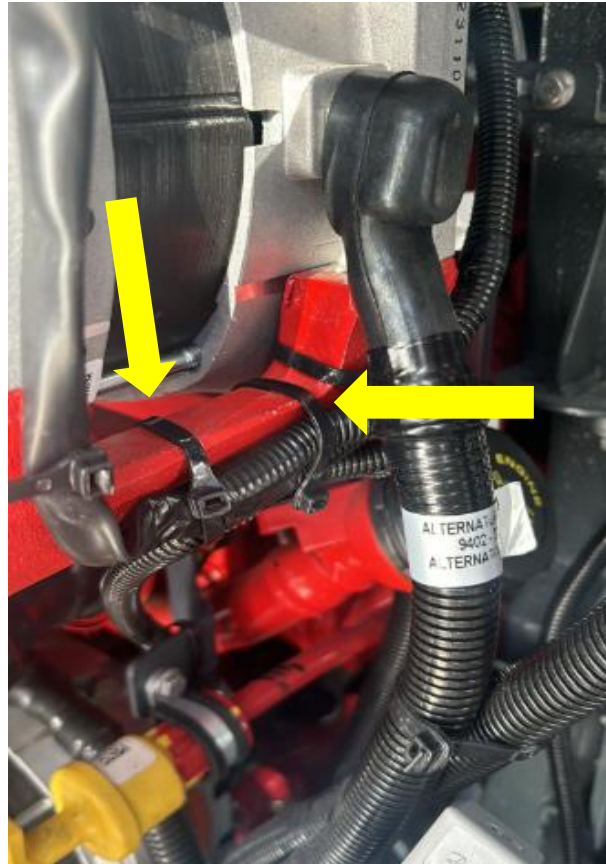


8) Assemble the belt (with 15 sockets and long handle)



9) Assemble the alternator harness





10) Process completed.

VEHICLE LIST

#	OTPA	VIN	COUNTRY
1	OA17851	NLTEJXA93R1000457	CANADA
2	OA17852	NLTEJXA95R1000458	CANADA
3	OA17885	NLTEJXA90R1000464	USA
4	OA17886	NLTEJXA92R1000465	USA
5	OA18463	NLTEJXB99S1000550	USA
6	OA18465	NLTEJXB92S1000552	USA
7	OA18466	NLTEJXB94S1000553	USA
8	OA18467	NLTEJXB96S1000554	USA
9	OA18475	NLTEJXB98S1000555	USA
10	OA18476	NLTEJXB9XS1000556	USA
11	OA18477	NLTEJXB91S1000557	USA
12	OA18478	NLTEJXB93S1000558	USA
13	OA18479	NLTEJXB95S1000559	USA
14	OA18499	NLTEJXB91S1000560	USA
15	OA18500	NLTEJXB93S1000561	USA
16	OA18501	NLTEJXB95S1000562	USA
17	OA18511	NLTEJXB97S1000563	USA
18	OA18512	NLTEJXB99S1000564	USA
19	OA18513	NLTEJXB90S1000565	USA
20	OA18557	NLTEJXB92S1000566	USA
21	OA18558	NLTEJXB94S1000567	USA
22	OA18559	NLTEJXB96S1000568	USA
23	OA18584	NLTEJXB98S1000569	USA

24	OA18585	NLTEJXB94S1000570	USA
25	OA18586	NLTEJXB96S1000571	USA
26	OA18587	NLTEJXB98S1000572	USA
27	OA18588	NLTEJXB9XS1000573	USA
28	OA18612	NLTEJXB91S1000574	USA
29	OA18613	NLTEJXB93S1000575	USA
30	OA18614	NLTEJXB95S1000576	USA
31	OA18615	NLTEJXB97S1000577	USA
32	OA18616	NLTEJXB99S1000578	USA
33	OA18617	NLTEJXB90S1000579	USA
34	OA18618	NLTEJXB97S1000580	USA
35	OA18640	NLTEJXB99S1000581	USA
36	OA18641	NLTEJXB90S1000582	USA
37	OA18642	NLTEJXB92S1000583	USA
38	OA18643	NLTEJXB94S1000584	USA
39	OA18667	NLTEJXB96S1000585	USA
40	OA18668	NLTEJXB98S1000586	USA
41	OA18669	NLTEJXB9XS1000587	USA
42	OA18670	NLTEJXB91S1000588	USA
43	OA18671	NLTEJXB93S1000589	USA
44	OA18672	NLTEJXB9XS1000590	USA
45	OA18697	NLTEJXB91S1000591	USA
46	OA18698	NLTEJXB93S1000592	USA
47	OA18699	NLTEJXB95S1000593	USA
48	OA18700	NLTEJXB97S1000594	USA
49	OA18701	NLTEJXB99S1000595	USA
50	OA18717	NLTEJXB90S1000596	USA

51	OA18718	NLTEJXB92S1000597	USA
52	OA18719	NLTEJXB94S1000598	USA
53	OA18720	NLTEJXB96S1000599	USA
54	OA18734	NLTEJXB99S1000600	USA
55	OA18735	NLTEJXB90S1000601	USA
56	OA18736	NLTEJXB92S1000602	USA
57	OA18737	NLTEJXB94S1000603	USA
58	OA18753	NLTEJXB96S1000604	USA
59	OA18754	NLTEJXB98S1000605	USA
60	OA18755	NLTEJXB9XS1000606	USA
61	OA18756	NLTEJXB91S1000607	USA
62	OA18757	NLTEJXB93S1000608	USA
63	OA18790	NLTEJXB95S1000609	USA
64	OA18791	NLTEJXB91S1000610	USA
65	OA18792	NLTEJXB93S1000611	USA
66	OA18793	NLTEJXB95S1000612	USA
67	OA18823	NLTEJXB97S1000613	USA
68	OA18824	NLTEJXB99S1000614	USA
69	OA18825	NLTEJXB90S1000615	USA
70	OA18826	NLTEJXB92S1000616	USA
71	OA18827	NLTEJXB94S1000617	USA
72	OA18828	NLTEJXB96S1000618	CANADA
73	OA18829	NLTEJXB98S1000619	USA
74	OA18830	NLTEJXB94S1000620	CANADA
75	OA18831	NLTEJXB96S1000621	USA
76	OA18832	NLTEJXB98S1000622	CANADA
77	OA18833	NLTEJXB9XS1000623	CANADA

78	OA18867	NLTEJXB91S1000624	USA
79	OA18868	NLTEJXB93S1000625	USA
80	OA18869	NLTEJXB95S1000626	USA
81	OA18870	NLTEJXB97S1000627	USA
82	OA18895	NLTEJXB99S1000628	USA
83	OA18896	NLTEJXB90S1000629	USA
84	OA18897	NLTEJXB97S1000630	USA
85	OA18898	NLTEJXB99S1000631	USA
86	OA18899	NLTEJXB90S1000632	USA
87	OA18900	NLTEJXB92S1000633	USA
88	OA18901	NLTEJXB94S1000634	USA
89	OA18902	NLTEJXB96S1000635	USA
90	OA18903	NLTEJXB98S1000636	USA
91	OA18904	NLTEJXB9XS1000637	USA
92	OA18905	NLTEJXB91S1000638	USA
93	OA18906	NLTEJXB93S1000639	USA
94	OA18942	NLTEJXB9XS1000640	USA
95	OA18943	NLTEJXB91S1000641	USA
96	OA18944	NLTEJXB93S1000642	USA
97	OA18945	NLTEJXB95S1000643	USA
98	OA18975	NLTEJXB97S1000644	USA
99	OA18976	NLTEJXB99S1000645	USA
100	OA18978	NLTEJXB92S1000647	USA
101	OA18979	NLTEJXB94S1000648	USA
102	OA19001	NLTEJXB96S1000649	USA
103	OA19002	NLTEJXB92S1000650	USA
104	OA19007	NLTEJXB94S1000651	USA

105	OA19008	NLTEJXB96S1000652	USA
106	OA19009	NLTEJXB98S1000653	USA
107	OA19010	NLTEJXB9XS1000654	USA
108	OA19011	NLTEJXB91S1000655	USA
109	OA19012	NLTEJXB93S1000656	USA
110	OA19013	NLTEJXB95S1000657	USA
111	OA19014	NLTEJXB97S1000658	CANADA
112	OA19015	NLTEJXB99S1000659	CANADA
113	OA19016	NLTEJXB95S1000660	CANADA
114	OA19027	NLTEJXB97S1000661	CANADA
115	OA19028	NLTEJXB99S1000662	USA
116	OA19029	NLTEJXB90S1000663	USA
117	OA19063	NLTEJXB92S1000664	USA
118	OA19081	NLTEJXB94S1000665	USA
119	OA19082	NLTEJXB96S1000666	USA
120	OA19083	NLTEJXB98S1000667	USA
121	OA19084	NLTEJXB9XS1000668	USA
122	OA19104	NLTEJXB91S1000669	USA
123	OA19105	NLTEJXB98S1000670	USA
124	OA19106	NLTEJXB9XS1000671	USA
125	OA19107	NLTEJXB91S1000672	USA