



## TECHNICAL SERVICE BULLETIN

### Non-Shelby GT-350 - Various Concerns With The Active Exhaust System

**25-2146**

10 April 2025

This bulletin supersedes 23-2132. Reason for update: update the labor times from actual time to actual time with a cap.

#### Model:

<b>Ford</b> 2020-2022 Mustang Shelby GT500	Engine: 5.2L Supercharged
2018-2023 Mustang	Engine: 2.3L EcoBoost Engine: 5.0L

**Markets:** North American markets only

**Issue:** Some of the vehicles listed in the Model statement above may exhibit at least one of the following conditions:

- "Exhaust Mode Selection Not Available" message
- Illuminated MIL with DTCs P26C5, P26C6, P26FE, P2BF9, P2BFB, P26C7, P2BF5, P2BF8, P2BFD and/or P2BFA.

This may be due to an improperly seated exhaust system.

**Action:** For vehicles that meet all of the criteria in the Issue and Model statements, follow the Service Procedure to diagnose the tailpipe actuator.

#### Parts

Service Part Number	Claim Quantity	Package Order Quantity	Number in Package	Description
W520111-S424	3	1	4	Exhaust Actuator Nuts
W711687-S300	2	1	4	Rear Underbody Shield Tree Fastener
W718128-S417	6	2	4	Rear Underbody Shield Push Pin Fastener

#### Parts - Parts To Inspect And Replace Only If Necessary

Service Part Number	Claim Quantity	Package Order Quantity	Number in Package	Description
KR3Z-14A411-G	Only If Necessary	Only If Necessary	1	Exhaust Actuator Harness - GT500/Mach 1
JR3Z-14A411-H	Only If Necessary	Only If Necessary	1	Exhaust Actuator Harness - 2.3L/5.0L
JR3Z-6554-A	Only If Necessary	Only If Necessary	1	Exhaust Actuator Service Kit
KR3Z-5230-P	Only If Necessary	Only If Necessary	1	Muffler and Tailpipe Assembly - GT500
JR3Z-5230-FC	Only If Necessary	Only If Necessary	1	Muffler and Tailpipe Assembly - 5.0L
KR3Z-5230-H	Only If Necessary	Only If Necessary	1	Muffler and Tailpipe Assembly - 2.3L
KR3Z-5230-M	Only If Necessary	Only If Necessary	1	Muffler and Tailpipe Assembly - 5.0L Bullitt

MR3Z-5230-C	Only If Necessary	Only If Necessary	1	Muffler and Tailpipe Assembly - 5.0L Mach 1 (A)
MR3Z-5230-E	Only If Necessary	Only If Necessary	1	Muffler and Tailpipe Assembly - 5.0L Mach 1 (B)
BR3Z-5A231-B	Only If Necessary	Only If Necessary	1	Exhaust Clamp - 2.3L
FR3Z-5A231-A	Only If Necessary	Only If Necessary	2	Exhaust Clamp - 5.0L

Service part numbers and "number in package" quantity may change after publication, thus also affecting the "package order quantity". Refer to the parts catalog for the latest information.

**Claim Quantity** refers to the total number of individual pieces required to repair the vehicle.

**Package Order Quantity** refers to the amount of the service part number package(s) required to repair the vehicle.

**Number In Package** refers to the number of individual pieces included in a service part number package.

**Only If Necessary** indicates the part is not mandatory. Refer to the Service Procedure to determine the inspection/inclusion criteria.

**Warranty Status:** Eligible under provisions of New Vehicle Limited Warranty (NVLW)/Emissions Warranty/Service Part Warranty (SPW)/Service Part New Vehicle (SPNV)/Extended Service Plan (ESP) coverage. Limits/policies/prior approvals are not altered by a TSB. NVLW/Emissions Warranty/SPW/SPNV/ESP coverage limits are determined by the identified causal part and verified using the OASIS part coverage tool.

### Labor Times

Description	Operation No.	Time
2018-2023 Mustang: Repair Active Exhaust Concerns Following The Service Procedure	MT252146	Actual Time Up To 3.3 Hrs.

### Repair/Claim Coding

Causal Part:	6554
Condition Code:	07

## Service Procedure

### 1. Are DTCs P26FE or P2BFB present?

(1). Yes – proceed to Step 2.

(2). No – proceed to Step 5.

### 2. Using the appropriate Ford diagnostic scan tool, access datalogger, and view the PCM PID. Monitor the EFCV\_A\_MON\_STAT PID while active commanding the EFCV\_A\_CMD PID. Open the tailpipe actuator in 10% increments until it has reached 100% (fully open). Close the tailpipe actuator in 10% increments until it has reached 0% (fully closed). Does the EVCA\_A\_MON\_STAT PID display a mechanical fault at any point?

(1). Yes – proceed to Step 3.

(2). No – proceed to Step 5.

### 3. Remove the exhaust actuator and inspect for physical binding and/or blockage and repair as necessary. Refer to WSM, Section 309-00C.

### 4. Is the concern still present?

(1). Yes – proceed to Step 5.

(2). No – repair is complete.

### 5. Inspect the muffler and tailpipe assembly and both catalytic converters for proper positioning of the exhaust clamps securing them together. Make sure the exhaust clamp locking tab is fully engaged to the catalytic converters (Refer to Figure 1). Make sure the knurled/ridge area of the muffler and tailpipe assembly are covered

by the exhaust clamps (Refer to Figures 2-3). Adjustments can be made by loosening the exhaust clamps and repositioning the muffler and tailpipe assembly. (Figures 1-3)

Figure 1 - Exhaust clamp locking tabs.

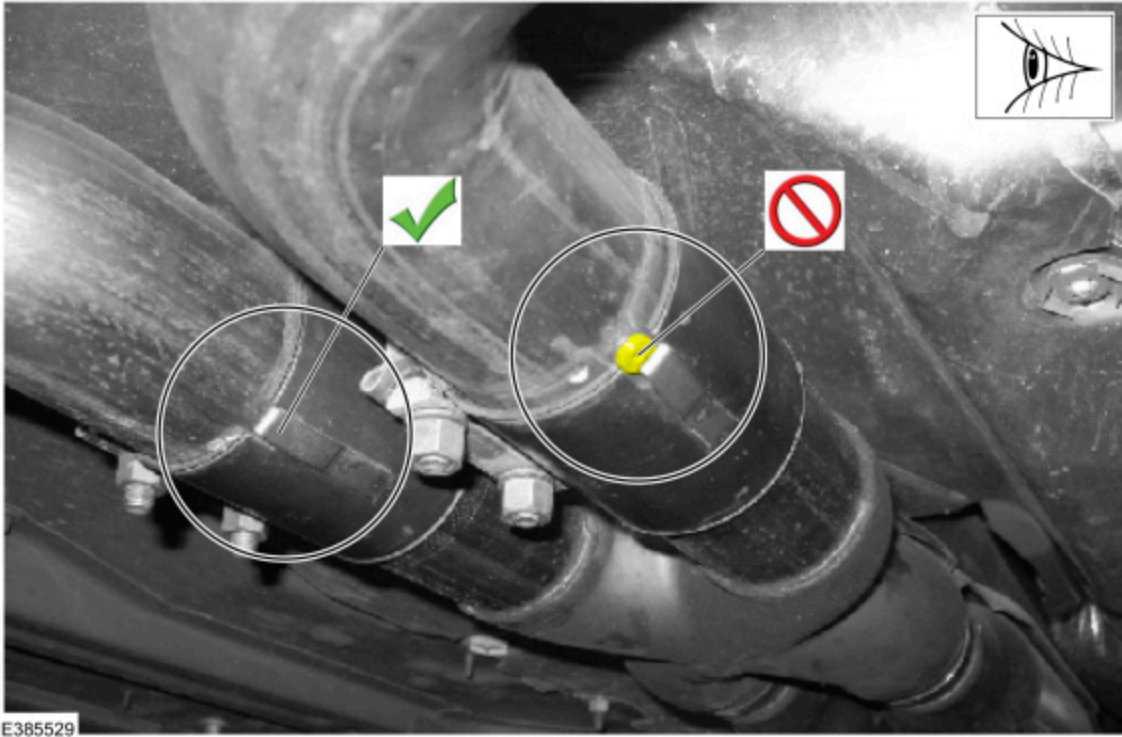


Figure 2 - Non-GT500 exhaust with ridge.

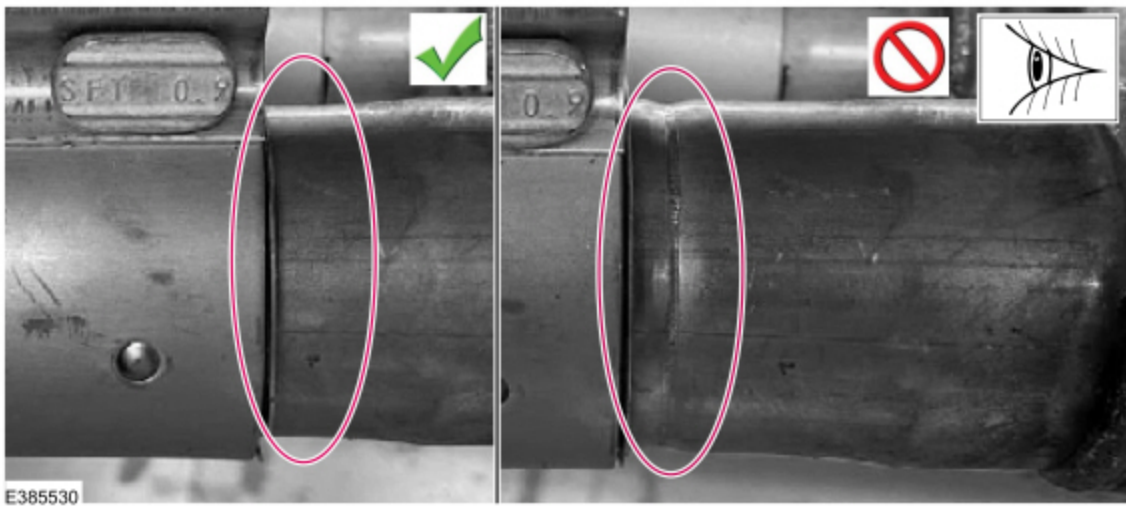
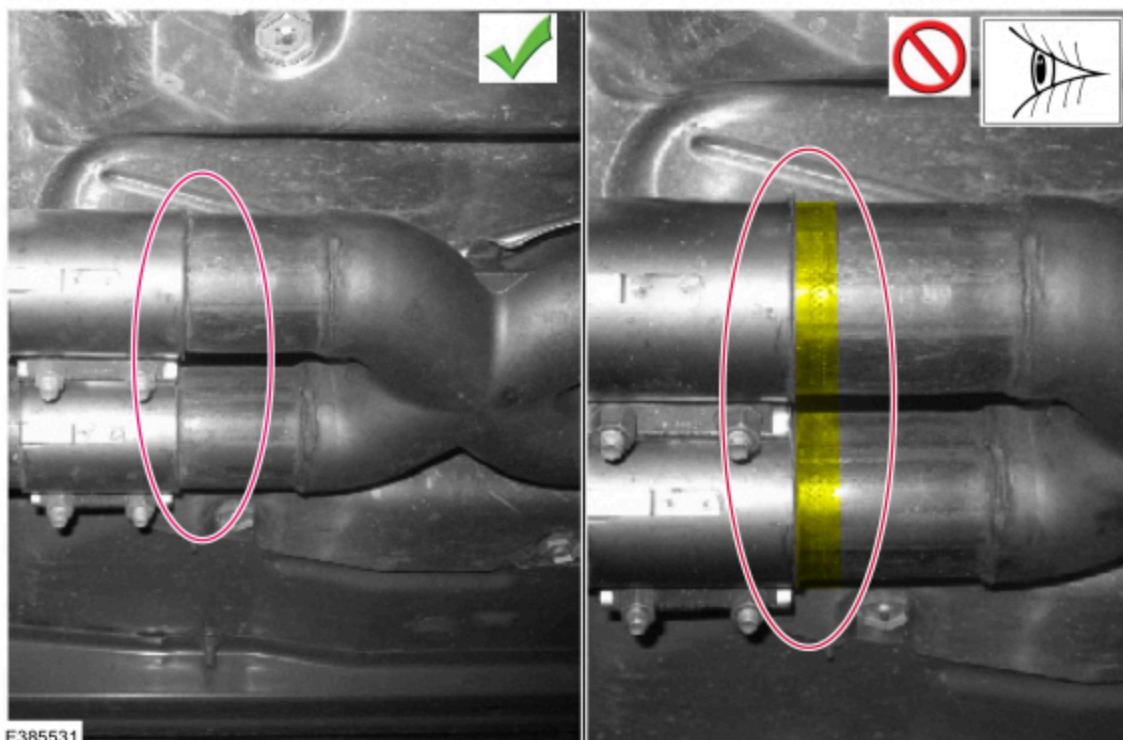
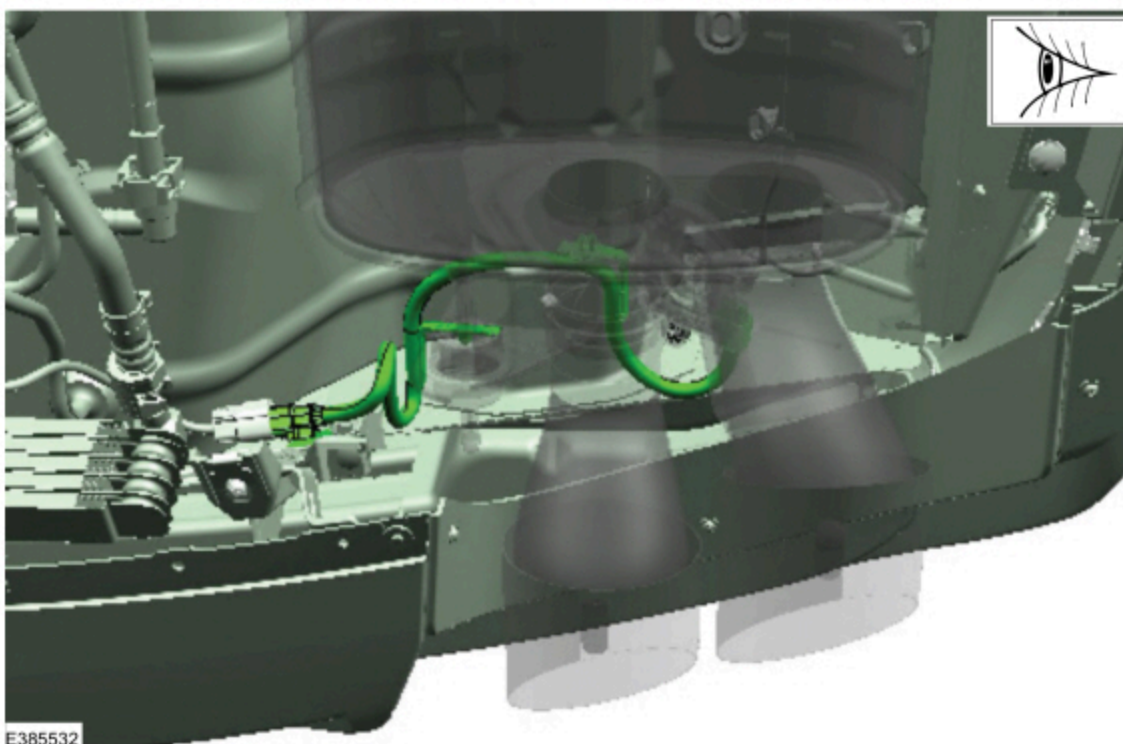


Figure 3 - GT500 exhaust with knurled area.



6. Inspect the exhaust actuator wiring harness for signs of damage. If damage is found, replace the exhaust actuator wiring harness (service base PN: 14A411).

Figure 4 - GT500 shown, other vehicles similar



7. If the concern persists, continue with normal diagnostics found in WSM, Section 309-00C.

and Extended Service Plan documentation determine Warranty and/or Extended Service Plan coverage unless stated otherwise in the TSB article. The information in this Technical Service Bulletin (TSB) was current at the time of printing. Ford Motor Company reserves the right to supersede this information with updates. The most recent information is available through Ford Motor Company's on-line technical resources.