



Service Bulletin

Bulletin No.: 08-03-10-006I

Date: March, 2025

TECHNICAL

Subject: Tire Slowly Goes Flat, Tire Air Loss, Low Tire Pressure Warning Light Illuminated, Aluminum Wheel Bead Seat Corrosion (Clean and Resurface Wheel Bead Seat)

Models: 2026 and Prior GM Passenger Cars and Light Duty Trucks

Attention: This Bulletin also applies to any of the above models that may be North America Export to the following countries: Europe, Russia, Middle East, Israel, Palestine, Argentina, Brazil, Bolivia, Chile, Colombia, Ecuador, Paraguay, Peru, Uruguay, Venezuela, Japan, GM Korea Company, Cadillac Korea (South Korea), China, Taiwan, Singapore, Philippines, Australia/New Zealand, Egypt, Africa, South Africa

This bulletin has been revised to add the 2023-2026 Model Years. Please discard Corporate Bulletin Number 08-03-10-006H.

Do This	Don't Do This
Clean corrosion and resurface the wheel bead seat area.	Do not replace the wheel if it can be repaired within the guidelines below.

Condition

Some customers may comment on a tire that slowly loses air pressure over a period of days or weeks.

Cause

Abrasive elements in the environment may intrude between the tire and wheel at the bead seat. There is always some relative motion between the tire and wheel (when the vehicle is driven) and this motion may cause the abrasive particles to wear the wheel and tire materials. As the wear continues, there may also be intrusion at the tire/wheel interface by corrosive media from the environment. Eventually a path for air develops and a 'slow' leak may ensue. This corrosion may appear on the inboard or outboard bead seating surface of the wheel. This corrosion will not be visible until the tire is dismantled from the wheel.

Notice: This bulletin specifically addresses issues related to wheel bead seat corrosion that may result in an air leak. For issues related to porosity of the wheel casting that may result in an air leak, please refer to the latest version of Corporate Bulletin Number 05-03-10-003 – Low Tire Pressure, Leaking Cast Aluminum Wheels (Repair with Adhesive Sealant).

Correction

In most cases, this type of air loss can be corrected by following the procedure below.

Important: DO NOT replace a wheel for slow air loss unless you have evaluated and/or tried to repair the wheel with the procedure below.

Notice: The procedure below is not advised for in-warranty repairs of chromed aluminum wheels. Repair by this method may correct the condition but not provide a lasting cosmetic repair for chromed aluminum wheels. The procedure is acceptable for machined or painted Aluminum and Chrome Clad Wheels with adhered plastic facings. For customer pay repairs completed out of warranty, this procedure may be performed on chromed aluminum

wheels as it will functionally correct air seepage issues at the bead seat and may be a viable alternative to replacing the wheel.

1. Remove the wheel and tire assembly for diagnosis. Refer to *Tire and Wheel Removal and Installation* in SI.
2. After a water dunk tank leak test, if you determine the source of the air leak to be around the bead seat of the wheel, dismount the tire to examine the bead seat. Shown below is a typical area of bead seat corrosion.

Typical Location of Bead Seat Corrosion

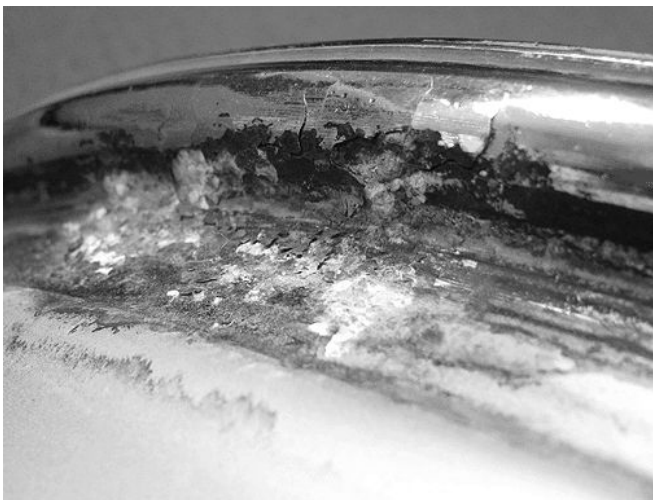


2103715

Important: Other forms of slow air leaks are possible. If the body of the tire, valve stem and wheel flange show no signs of air seepage, refer to the latest version of Corporate Bulletin Number 05-03-10-003 for additional information on possible wheel porosity issues.

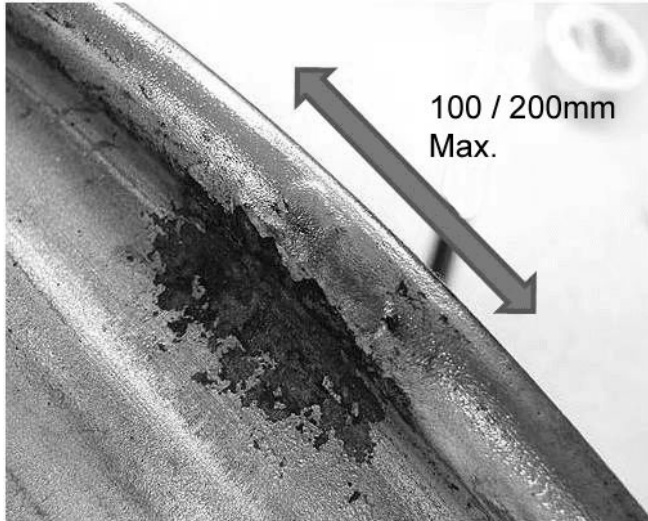
3. Bead seat corrosion is identified by what appears like blistering of the wheel finish, causing a rough or uneven surface that is difficult for the tire to maintain a proper seal on. Below is a close-up photo of bead seat corrosion on an aluminum wheel that was sufficient to cause slow air loss.

Close-Up of Bead Seat Corrosion



2103722

4. If corrosion is found on the wheel bead seat, measure the affected area as shown below.

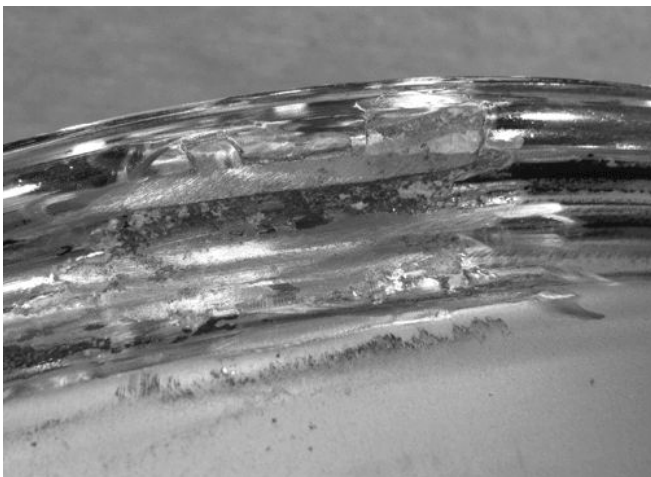


2365347

- For vehicles with 32,186 km (20,000 mi) or less, the total allowable combined linear area of repairable corrosion is 100 mm (4 in) or less. If the total area(s) of corrosion exceed these dimensions, the wheel should be replaced.
 - For vehicles that have exceeded 32,186 km (20,000 mi), the total allowable combined linear area of repairable corrosion is 200 mm (8 in) or less. If the total area(s) of corrosion exceed these dimensions, the wheel should be replaced.
5. In order to correct the wheel leak, use a clean-up (fine cut) sanding disc or biscuit to remove the corrosion and any flaking paint. You should remove the corrosion back far enough until you reach material that is stable and firmly bonded to the wheel. Try to taper the edge of any flaking paint as best you can in order to avoid sharp edges that may increase the chance of a leak reoccurring. The photo below shows an acceptable repaired surface.

Important: Remove ONLY the material required to eliminate the corrosion from the bead seating surface. DO NOT remove excessive amounts of material. ALWAYS keep the sealing surface as smooth and level as possible.

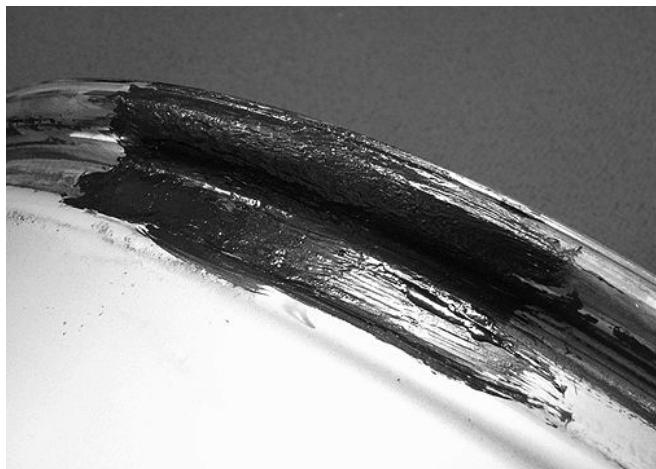
Acceptably Prepared (Cleaned-Up) Wheel Surface



2103726

6. Once the corrosion has been eliminated, you should coat the repaired area with a commercially available tire sealant such as Patch Brand Bead Sealant or equivalent. Commercially available bead sealants are black rubber-like coatings that will permanently fill and seal the resurfaced bead seat. At 21°C (70°F) ambient temperature, this sealant will set-up sufficiently for tire mounting in about 10 minutes.

Coated and Sealed Bead Seat



2103731

7. Remount the tire and install the repaired wheel and tire assembly. Refer to *Tire and Wheel Removal and Installation* in SI.

Parts Information

Patch Brand Bead Sealer is available from Myers Tires at 1-800-998-9897 or on the web at www.myerstire-supply.com. The one-quart size can of sealer will repair about 20 wheels.

Part Number	Description
16118	Patch Bead Sealer (1 Quart)

Warranty Information

For vehicles repaired under the Bumper-to-Bumper coverage (Canada Base Warranty coverage), use the following labor operation. Reference the Applicable Warranties section of Investigate Vehicle History (IVH) for coverage information.

Labor Operation	Description	Labor Time
8080068*	Wheel, Bead Seat Repair (One)	0.6 hr
*This is a unique Labor Operation for bulletin use only.		