

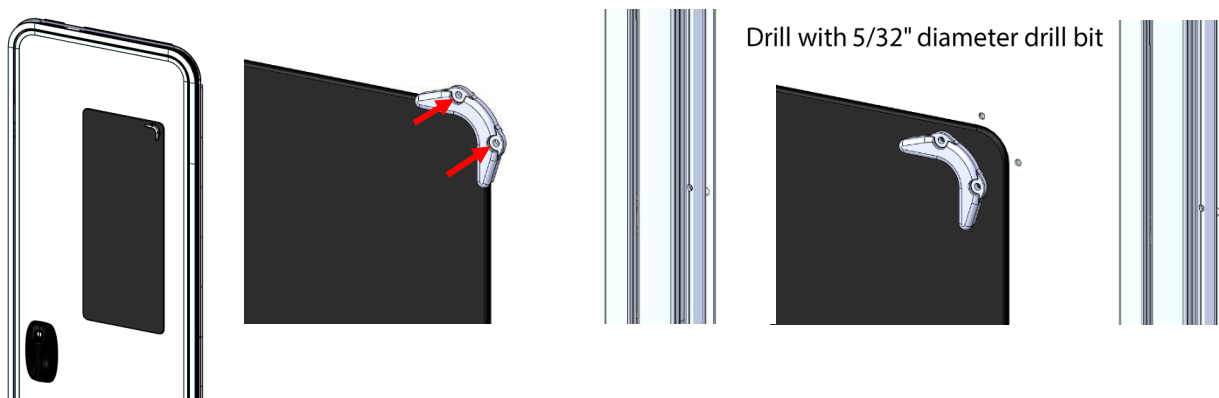
## Purpose

This document refers to the correct procedure for installing the additional window fixing clips.

## Procedure

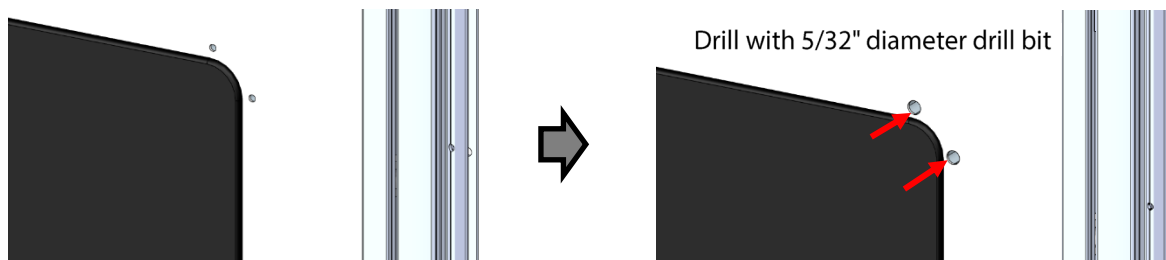
### 1. Step 1

Place the corner piece against the window and drill pre-holes with a 5/32" (4mm) diameter drill bit. The depth of the hole should not exceed 0.52 inch (13mm).

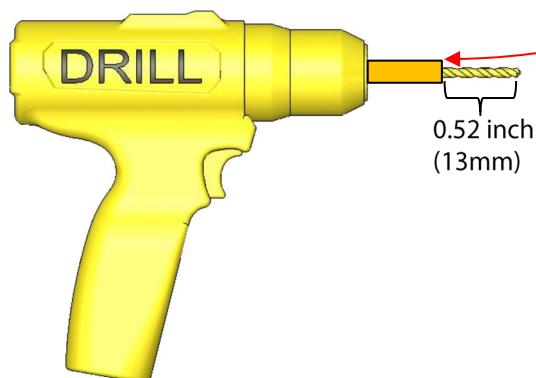


Increase the diameter from 5/32" to 5/16", drilling with 5/16" (8mm) drill bit.

The depth of the hole should not exceed 0.52 inch (13mm).



Do the same thing for all angles.



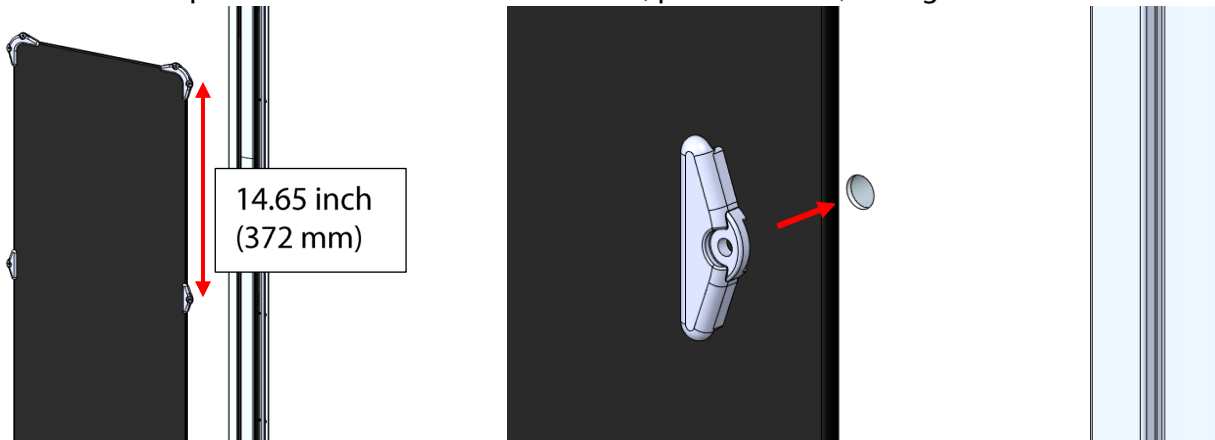
**ATTENTION:**  
Wrap some tape at 0.52 inch (13mm) from the drill bit. This will guide you to make the hole the correct depth.

## DOORS

### 2. Step 2

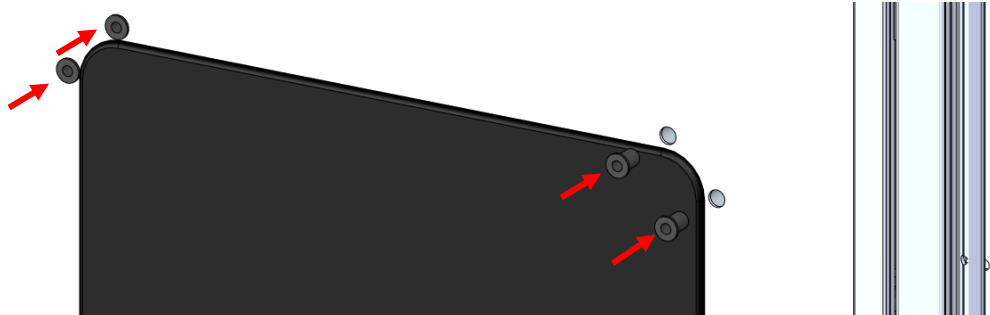
Repeat the procedure of step 1 for the two linear clips.

Place the two linear clips in the centerline of the window, pre-drill 5/32", enlarge the hole to 5/16"



### 3. Step 3

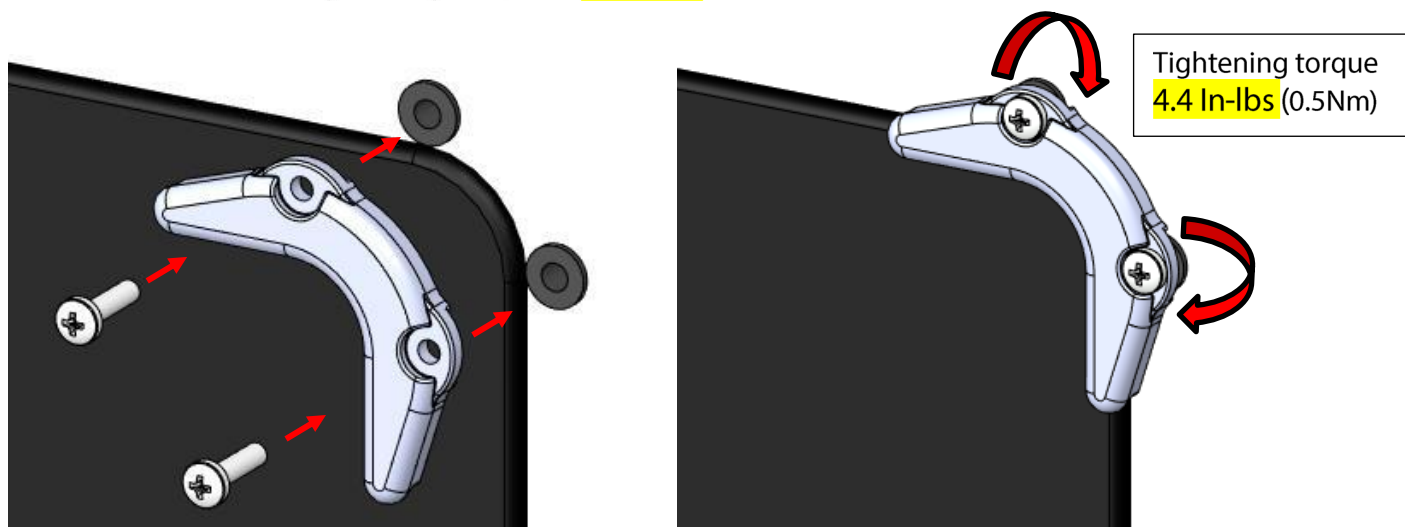
Push the threaded inserts into the holes.



### 4. Step 4

Place the clips over the threaded inserts and tighten the screws.

**CAUTION:** Observe the tightening torque of **4.4 In-lbs** (0.5Nm).



As a supplier of components to the RV industry, safety, education and customer satisfaction are our primary concerns. Should you have any questions, please do not hesitate to contact us at 432-LIPPERT (432-547-7378) or by email at [customerservice@lci1.com](mailto:customerservice@lci1.com). Self-help tips, technical documents, product videos and a training class schedule are available at [lippert.com](http://lippert.com) or by downloading the LippertNOW app.