

Before you begin, turn off the Inverter master switch located directly underneath the sofa inside the coach.



Remove the back rest for the power sofa using the ½” deep socket. There are 4 nuts that hold the backrest to the sofa mechanism. Set the sofa backrest to the side being careful not to damage any materials with the bolts that are protruding. With the backrest removed fully extend the power sofa using the LCD screen mechanical page.



The inverter is in the rear driver side corner of the coach under a cover. Remove the Robertson screws on the panel cover to access the inverter location.

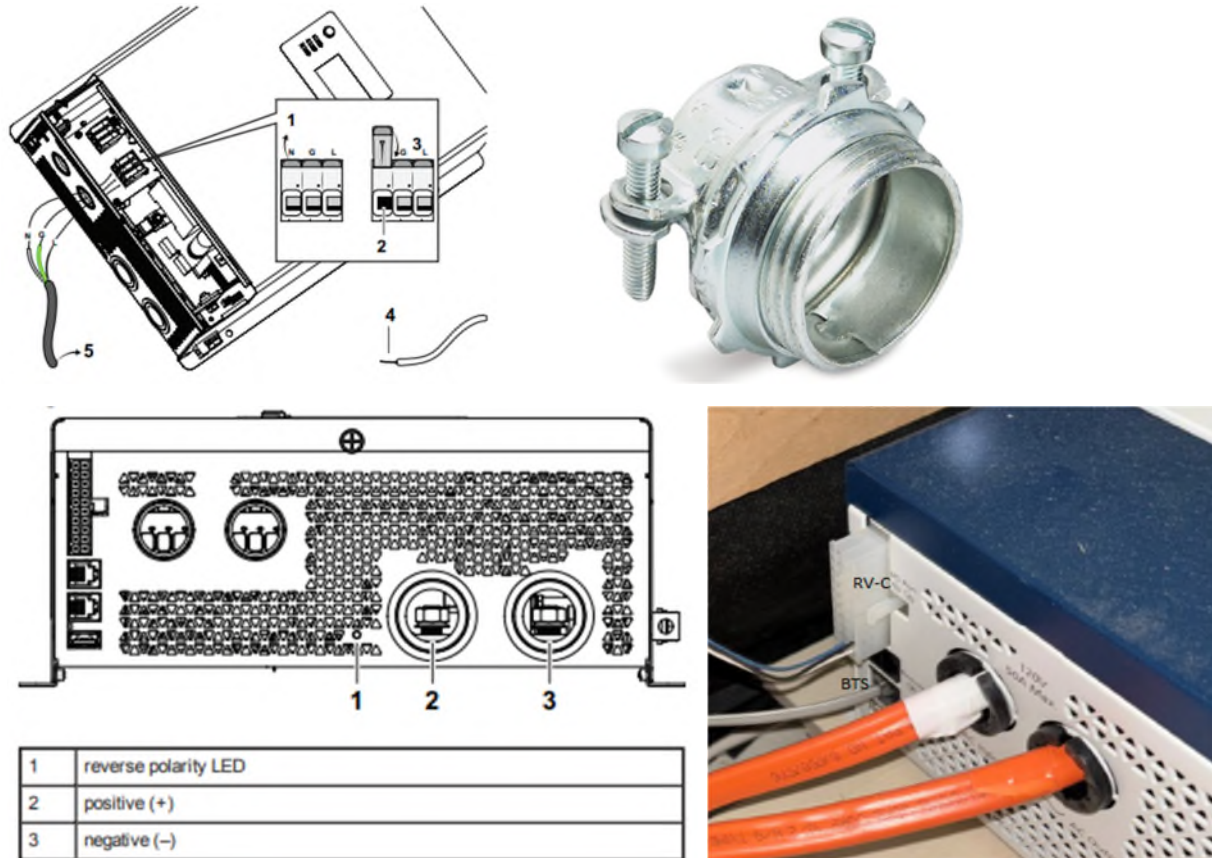


Disconnect the 120v wiring, 12v wiring, RV-C connection and BTS (battery temperature sensor).

\* With the Inverter master switch off, there is no voltage supplied by the batteries. The inverter capacitors may still contain voltage.

\* The sofa seat frame is grounded.

\* I will send additional clamps for the 120v knockouts which make installation easier.



Re-install the 120v wiring, making sure to not put any stress onto the wago connectors. The wiring should be coming in as straight as possible and not in on an angle. Be careful not to pinch any insulation when closing the wago connection.

Tighten the 12v wiring down to a maximum of 80 in-lb (9 N-m) of force

Re-connect the RV-C connection

**\*Do not reconnect the BTS (battery temperature sensor). Tape the end of this cable and leave out of the inverter secured to the wiring bundle.**

The LFP charge profile does not adjust the settings due to temperature. This will not be required to be re-installed and was showing as a fault previously.

The power button on the inverter must always remain in the on position so that we can communicate with the inverter on the network.

Once the installation is complete, we need to reprogram the inverter settings. Turn on the Inverter master switch under the sofa to restore 12v power to the inverter.

Next, go to the settings page of the Spyder Controls LCD screen and press and hold your finger on coach model. When prompted, type in 8365.

On the bottom of the page, you will see battery settings. Press this selection.

Press the default settings selection on the right hand side of the page.

Follow the prompts and the bottom of the page to restore default settings.

This will bring you back to the battery settings page and the values should all read as:

Battery type should be lithium

LBCO is 12.1v

Charge rate 65%.

Hibernate timer is disabled.

Exit out of program settings.



Installation is now complete. The inverter when no utility is available should be supplying power to the receptacles, cooktop, microwave and AC. The inverter should also charge the batteries when connected to a 120v source such as shore power or generator. The charge rate will be roughly 95 amps DC if no other appliances are being used.