

**Important Information on External Power Connection and Jump-Lead Starting (08/25)**

Model Line: **Macan (XAB)**

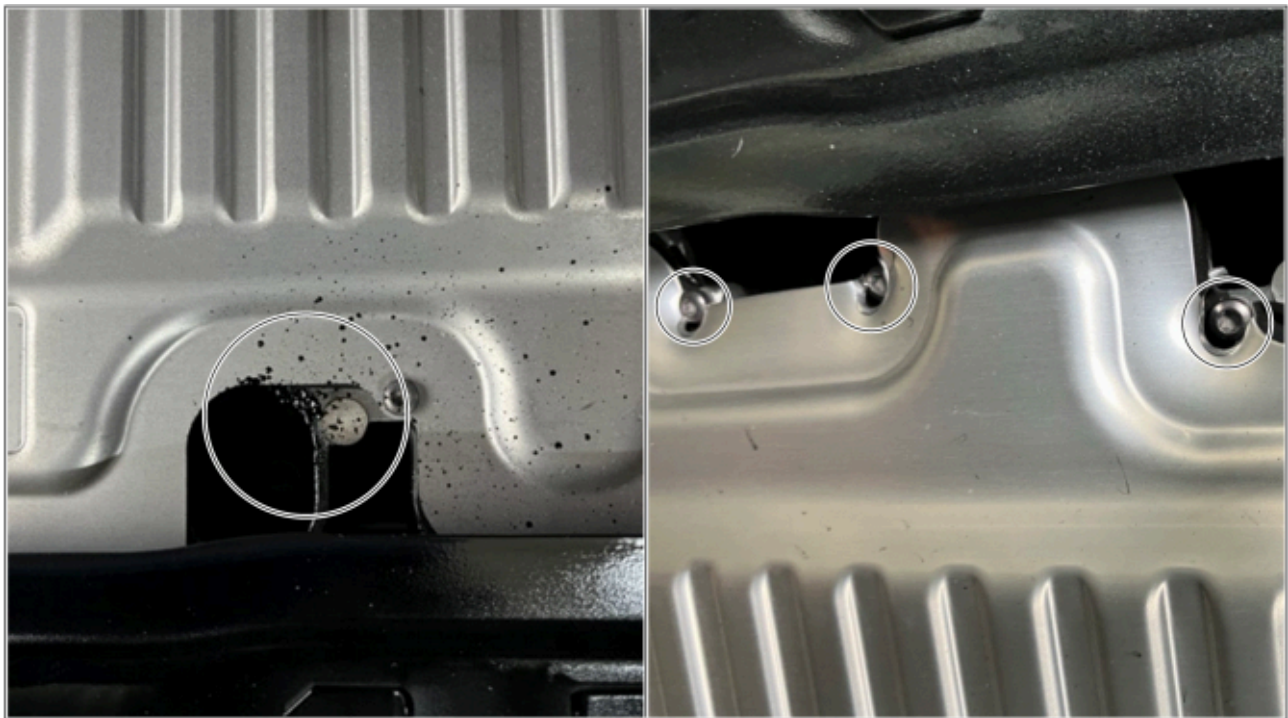
Model Year: **As of 2024**

Concerns: **Faulty connection of external 12-volt power supply to the vehicle**

Cause: **If an external 12-volt power supply is incorrectly connected to the vehicle, for example to the main fuse box, the protective devices of the vehicle electrical system are bypassed.**

If there is already a short circuit in the vehicle, bridging the electric power distributor (J1282) may result in consequential damage with an increased risk of fire.

**Example HV central box (high-voltage central box JX6):** A short circuit on the internal DC/DC converter led to complete destruction with a pressure wave and corresponding sound generation, which caused the lid to become detached from the screw connections.



*Examples of short-circuit damage to HV central box*

Action: For the reasons mentioned, the 12-volt vehicle electrical system may only be supplied **via the designated external start points**.



*External starting points (left-hand drive vehicles)*

- 1 – External starting point plus potential
- 2 – External starting point minus potential

**Important Notice:** Technical Bulletins issued by Porsche Cars North America, Inc. are intended only for use by professional automotive technicians who have attended Porsche service training courses. They are written to inform those technicians of conditions that may occur on some Porsche vehicles, or to provide information that could assist in the proper servicing of a vehicle. Porsche special tools may be necessary in order to perform certain operations identified in these bulletins. Use of tools and procedures other than those Porsche recommends in these bulletins may be detrimental to the safe operation of your vehicle, and may endanger the people working on it. Properly trained Porsche technicians have the equipment, tools, safety instructions, and know-how to do the job properly and safely. Part numbers listed in these bulletins are for reference only. The work procedures updated electronically in the Porsche PIWIS diagnostic and testing device take precedence and, in the event of a discrepancy, the work procedures in the PIWIS Tester are the ones that must be followed.

© 2025 Porsche Cars North America, Inc.