



Technical Service Bulletin

SUBJECT: 2025 OUTLANDER DISCHARGED BATTERY (THIS TSB MUST BE PERFORMED ON AFFECTED VEHICLES/INVENTORY IMMEDIATELY)		NO: TSB-25-54-004	
		DATE: March 2025	
		MODEL: Outlander	
CIRCULATE TO:	<input type="checkbox"/> GENERAL MANAGER	<input checked="" type="checkbox"/> PARTS MANAGER	<input checked="" type="checkbox"/> TECHNICIAN
<input checked="" type="checkbox"/> SERVICE ADVISOR	<input checked="" type="checkbox"/> SERVICE MANAGER	<input checked="" type="checkbox"/> WARRANTY PROCESSOR	<input type="checkbox"/> SALES MANAGER

PURPOSE

This bulletin provides instructions to perform configuration for the BCM (Body Control Module).

BACKGROUND

After the activation of Remote Climate Start or Smart Route Planner through MY MITSUBISHI CONNECT, the vehicle SOS LED does not turn off, preventing the vehicle from entering sleep mode causing the battery to discharge.

AFFECTED VEHICLES

2025 Outlander



ATTENTION: Dealers must confirm 2025 Outlander is affected based on VIN, symptom, and model. **ALL in-stock inventory vehicles should be configured prior to being sold.**

If a vehicle has already been sold, **please advise the customer of the concern and have the repair completed as quickly as possible.**

WORK PROCEDURE

Please configure the BCM.

Equipment

The following equipment is needed to perform the configuration:

- VCI (Vehicle Communication Interface) or VCI Lite - MB991824 or MB992744
- MEDIC Laptop/Tablet with A/C power adapter - 520924 or FZG1MK2
- MUT-3 Main Harness "A" (blue connector at the DLC end) - MB991910 OR MB992745
- USB 2.0 Cable - MB991827 or MB992747

Copyright 2025, Mitsubishi Motors North America, Inc.

The information contained in this bulletin is subject to change. For the latest version of this document, go to the Mitsubishi Dealer Link, MEDIC, or the Mitsubishi Service Information website (www.mitsubishitechinfo.com).

CONFIGURATION PROCEDURE

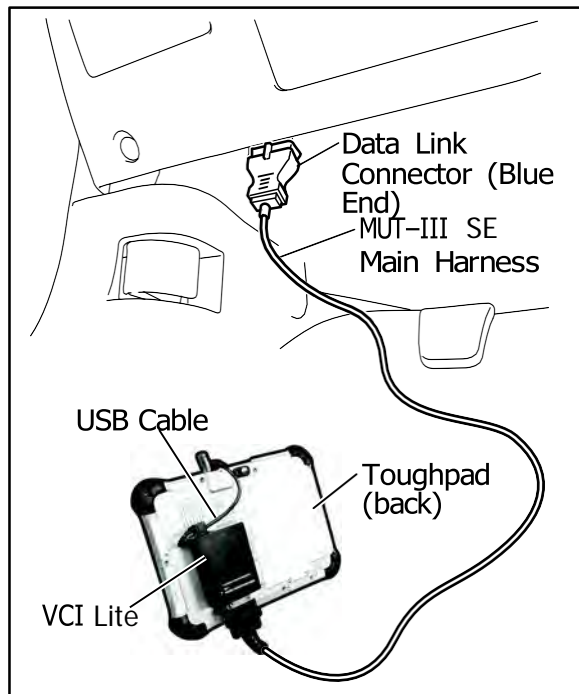


CAUTION To ensure that the vehicle battery maintains 12V during the procedure, connect a battery charger to the vehicle during the procedure.

NOTE: VCI Stand-alone reprogramming is not available for this procedure. The laptop/tablet and the VCI must remain connected for the entire procedure.

1. Connect the equipment as follows:

NOTE: VCI Lite and MEDIC 4.0 Toughpad shown for illustration purposes only.



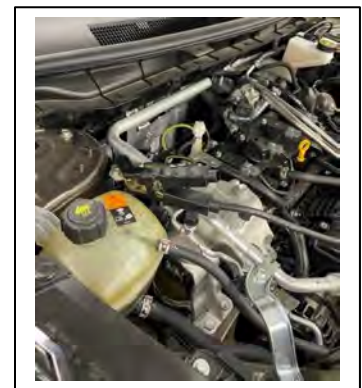
- Turn the MEDIC PC/tablet on. If the battery indicator in the lower right hand corner of the screen does not show a full charge, it is recommended that either the battery be charged prior to beginning or the tablet should be used with the A/C power adapter connected.
- Connect the USB cable to the VCI/VCI Lite. When the laptop/tablet displays the MUT-III SE main screen, connect the USB cable to the device.
- Connect the MUT-3 SE main harness with the blue DLC connection to the VCI/VCI Lite. Connect the blue connection of the MUT-3 SE main harness to the vehicle's data link connector.
- For VCI only (p/n MB991824): Turn the VCI power switch ON. Verify that the indicator lamp in the upper right corner of the screen is green.



DO NOT DISTURB THE HARNESS CABLES OR CONNECTIONS DURING THE REPROGRAMMING PROCESS AS IT COULD CAUSE THE CONTROL UNIT TO LOSE DATA. IF THE USB CABLE IS DISCONNECTED DURING THIS PROCEDURE, A WARNING MESSAGE WILL DISPLAY.

NOTE: Due to limited space in the engine compartment it may be easiest to connect battery charger cable onto ground point.

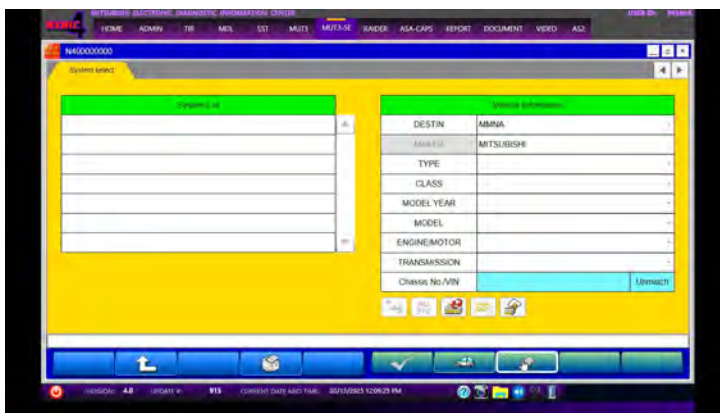
2. Place the push-button switch in the "ON" position.



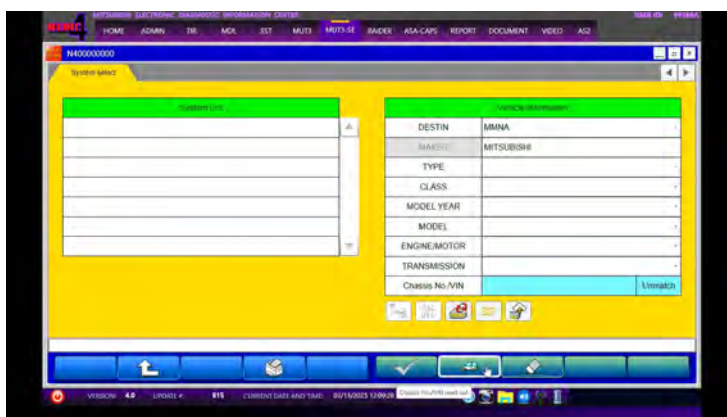
3. Turn on flashers to prevent vehicle from shutting/powering down.
4. Press the "STV" button.



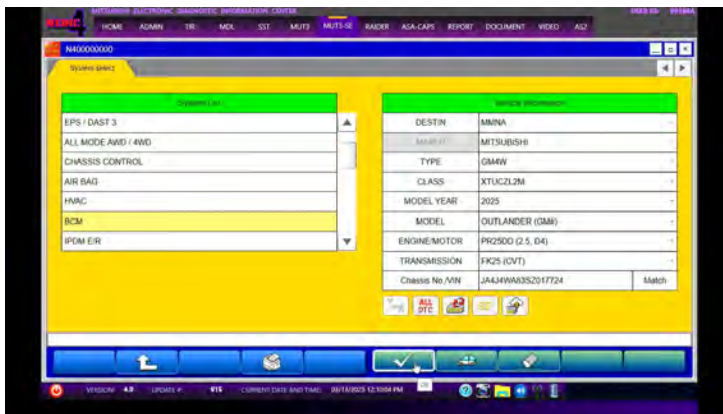
- a. Press the "erase" button.



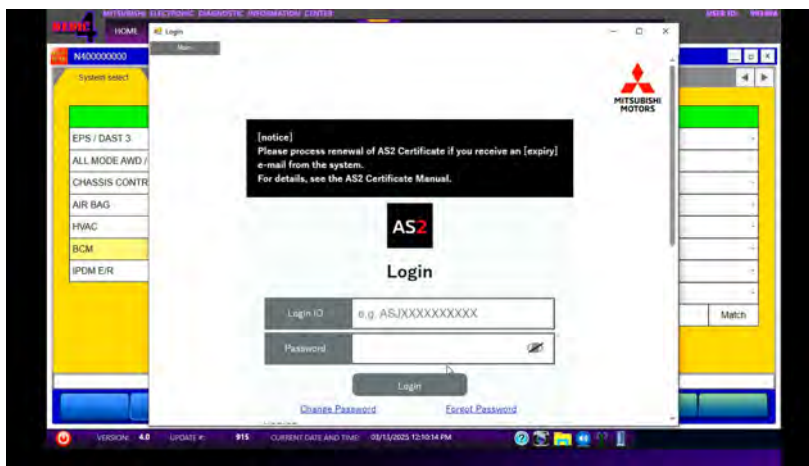
- b. Press the "car icon" for Chassis No/VIN read out.



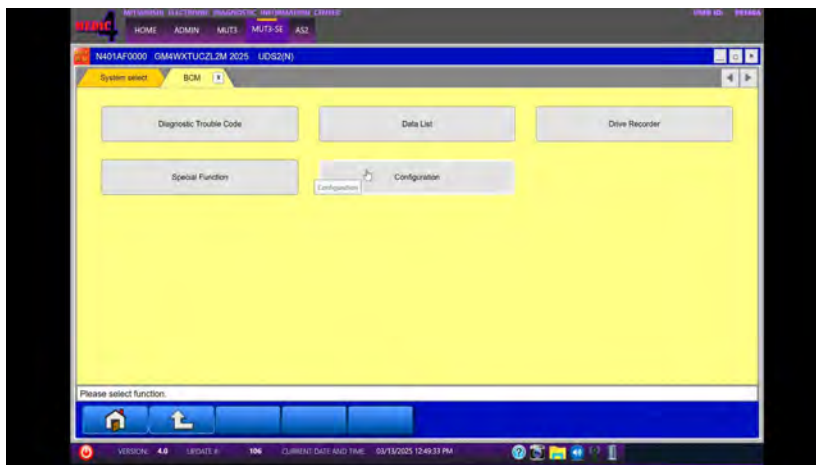
- c. Confirm the vehicle information displayed is complete/correct. The class can be found on the B pillar. Select "BCM" from the System List and press the "OK" button.



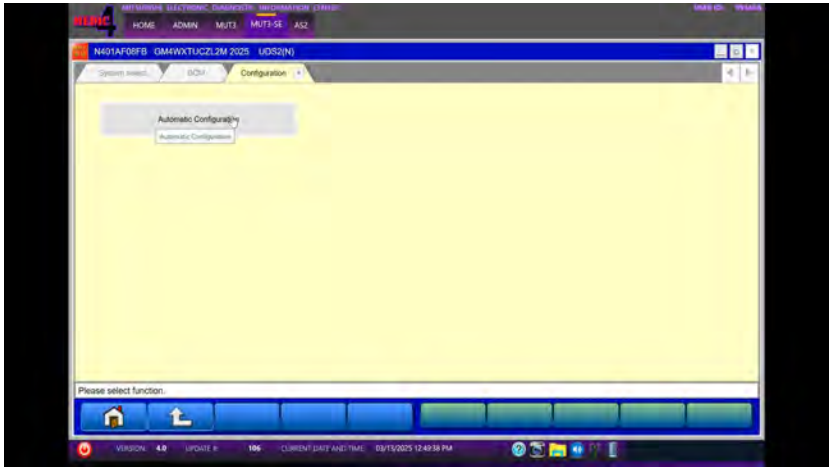
- d. CGW Mode Change will appear and when prompted, complete "AS2" login.



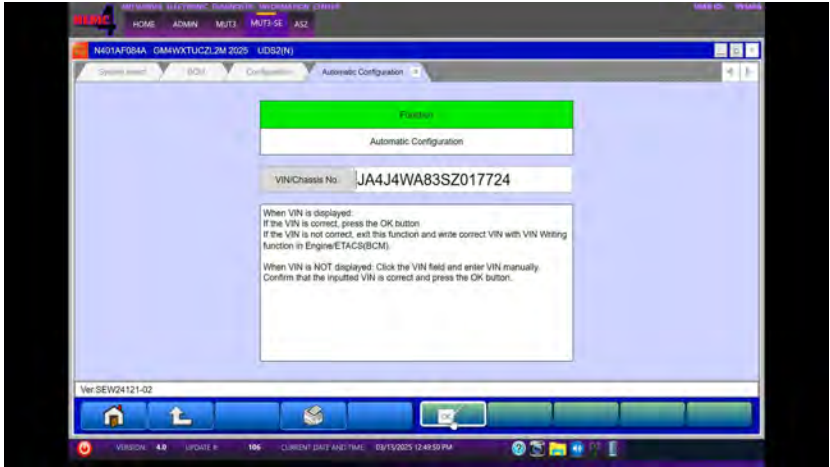
- e. Press the "Configuration" button.



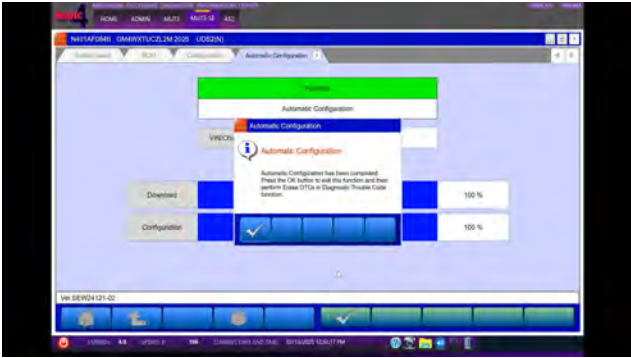
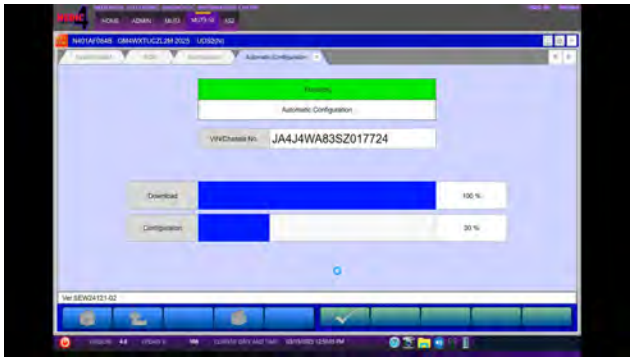
f. Press the "Automatic Configuration" button.



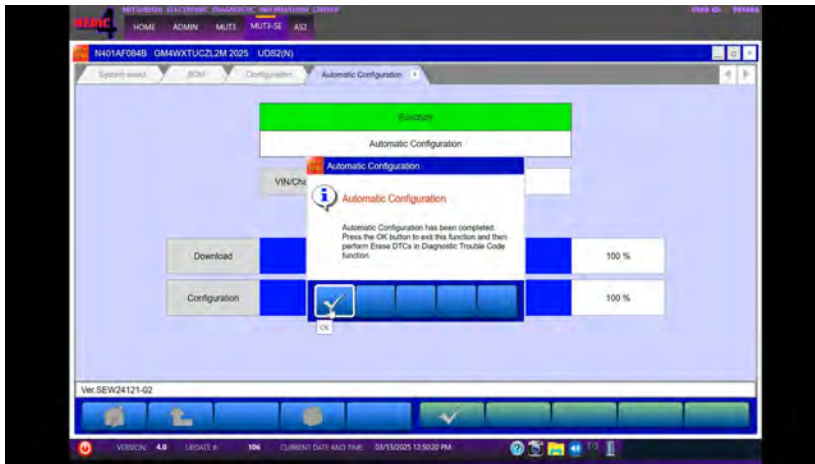
g. Verify the correct VIN is display and press the "OK" button.



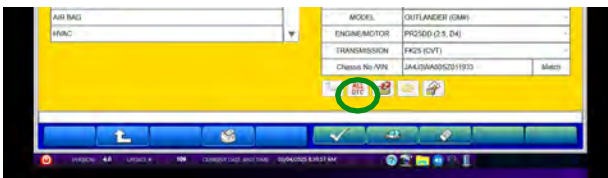
h. A progress bar will show download progression and notify upon completion.



- i. Press the "OK" button. Configuration is complete.



- j. Press the "ALL DTCs" button and then press the "Erase and Read all DTCs" button. Press the "OK" button to begin. When completed press the "OK" button.



5. Using a ball-point pen, enter the appropriate ECU part number, Software Part Number (ROM ID#), this Technical Service Bulletin number, your dealer code, and the current date on the Engine Compartment/Control Module Label (p/n MSSF024G00). The Vendor Code is not applicable. The label is available from your facing PDC.

MITSUBISHI MOTOR SALES OF AMERICA, Inc.		AUTHORIZED MODIFICATIONS These Modifications Have Been Approved as Appropriate by EPA and NHTSA		AUTHORIZED MODIFICATIONS MITSUBISHI MOTOR SALES OF AMERICA, Inc.	
THE FOLLOWING MODIFICATIONS HAVE BEEN MADE:					
PART NUMBER 1860DXXX		VENDOR CODE N/A		ROM ID # ENG 1860C2XXXX	
TSB ENG TSB-20-13-XXX		DEALER CODE 99332		DATE 06/25/20	
A/T		DATE		DATE	
Engine Compartment Label				Control Module Label	

6. Test drive the vehicle to confirm proper operation and restore all customer presets if necessary.

WARRANTY

This bulletin is supplied as technical information only and is not an authorization to repair. If an affected vehicle is reported with the described condition, diagnose the condition, repair as described in this bulletin and submit a normal warranty claim using the information below.

Operation Code	Operation	Cause Code A	Nature Code B	Nature Code C	Quantity	Work Time
548501VF	Configuration	860	4B	A	1	0.3 H