

March 27, 2025

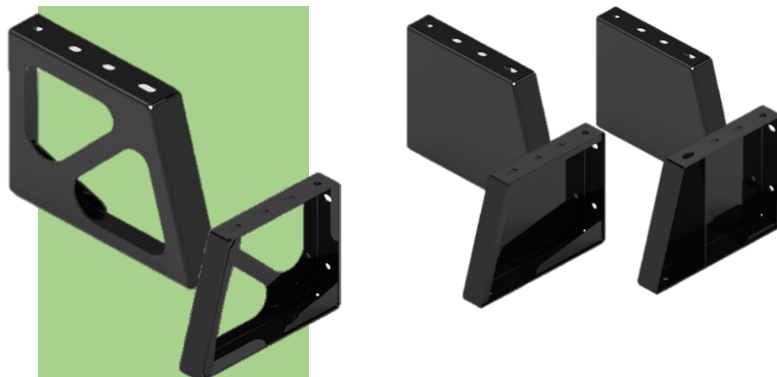
**Product Update – New Universal Leg for Freedman Type-2 Seats (3-Point)**

This notice is to inform customers about a rolling change to our existing type-2 leg systems. Please be aware of the new part numbers listed below.

Our newly designed Universal Leg is crafted from high-strength steel and engineered to be lighter, more versatile and visually pleasing without compromising on performance.

The new Universal Leg for Type-2 seating replaces both GO and 3PT leg systems. We've observed comparable or superior performance in FMVSS 207/210 tests for the new Universal Leg vs. your current Freedman GO or 3PT legs. Test reports are available upon request.

	New U-T-2 Leg	GO Leg	3PT Leg
<b>Part Number Curbside</b>	107556	24021	14507
<b>Part number Streetside</b>	107567	13299	14508
<b>Weight</b>	6.0 lbs.	6.0 lbs.	9.3 lbs.



The new Universal Leg for Type-2 seating may be used with the following Freedman and FMS 3-point products: 3PT, Esquire, Bellagio, Caregiver, GO-ES, Palermo, Venezia, and Trieste.

***What does this mean to our customers?***

- All new orders for type-2 seats will default to the new Universal Legs (when applicable).
- We will work directly with customers to fulfill existing orders/contracts to ensure that runs of units do not end up with varying leg types.
- Replacement parts will continue to be available.
- As of today, Family 3PTA seats are not part of this change.

***Benefits to you:***

- The new leg system is now compatible with aluminum track flooring systems. The holes on the floor are on 1" increments AND have a slot to accommodate our 1.75" legacy rear holes spacing.
- 3+ lbs. weight savings from legacy 3PT legs.
- One leg for all Freedman 3-Point seats means you can swap legs if you need to.
- Easier access to bolts from the aisle of the bus.

Please contact your regional Freedman sales rep or customer service at (773) 524-2440 for questions about these changes.