



Technical Service Bulletin

Technical Service Bulletin: TSB250060

Released Date: 26-Mar-2025

Campaign #5813 – HGJAA & HGJAD Control Board Software Update SPEC N ONLY

Campaign #5813 – HGJAA & HGJAD Control Board Software Update SPEC N ONLY

Warranty Statement

The information in this document authorizes specific changes to the repair practice for failures covered under product warranty coverages.

Contents

Product Affected

- HGJAA Spec N
- HGJAD Spec N

Issue

The spec M software was incorrectly uploaded to spec N generator sets on units in the generator set serial number list provided.

Verification/Confirmation

If generator set is listed in the associated document (TSB250060 -A) and has calibration part number A030G041.dfa v4.12, proceed to the resolution section.

Resolution

Update the control software through InCal.

Service Instructions

1. If generator set is at OEM/RDC, unbox the unit from original packaging (not applicable for installed units).
 - 1.1. Location dependent, load software patch before going to site.

2. Download and install the updated software on Incal.
3. Update RAVEN EFI Control from A030G041.dfa v4.12 to A074V714.dfa v1.00
4. Make sure Control Is ON & AWAKE (May press & hold PRIME button for 1-2s until RED LIGHT turns on if unit is asleep)
5. Part Numbers potentially required (BrainBox needed only if computer does not have a direct Serial Port attached):
 - 5.1. Appropriate Cable

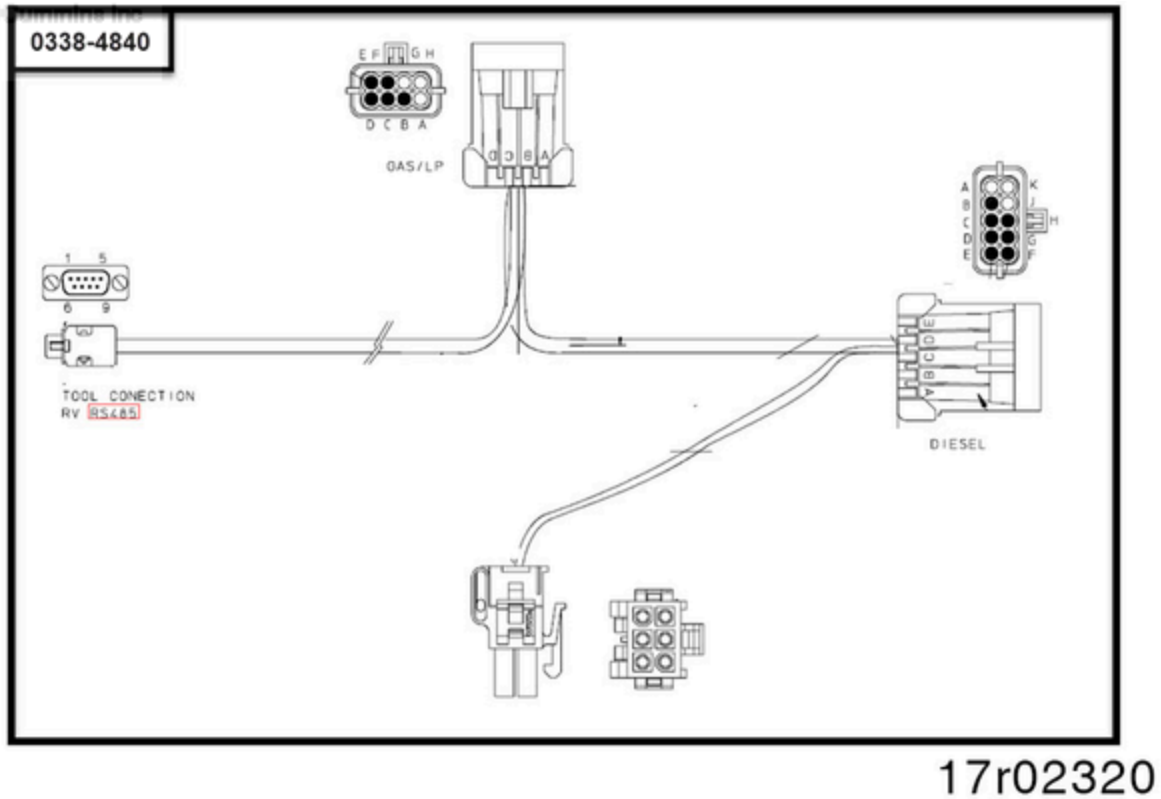


Figure 1, Appropriate Cable

5.1.1. [0324-0021] RS232/RS485 Converter:



17r02321

Figure 2, [0324-0021] RS232/RS485 Converter

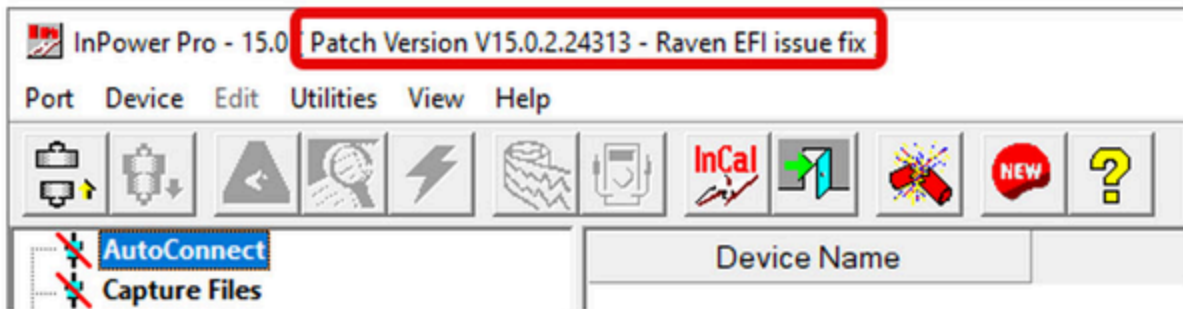
5.1.2. [A053T968] BrainBox US-101:



17r02322

Figure 3, [A053T968] BrainBox US-101

6. Connect to generator set and computer. Open control site by double-clicking AutoConnect, and confirm the correct version.



17r02323

Figure 4, Patch Version

7. Right-click the site (HGJAX) and select "Initial Calibration".

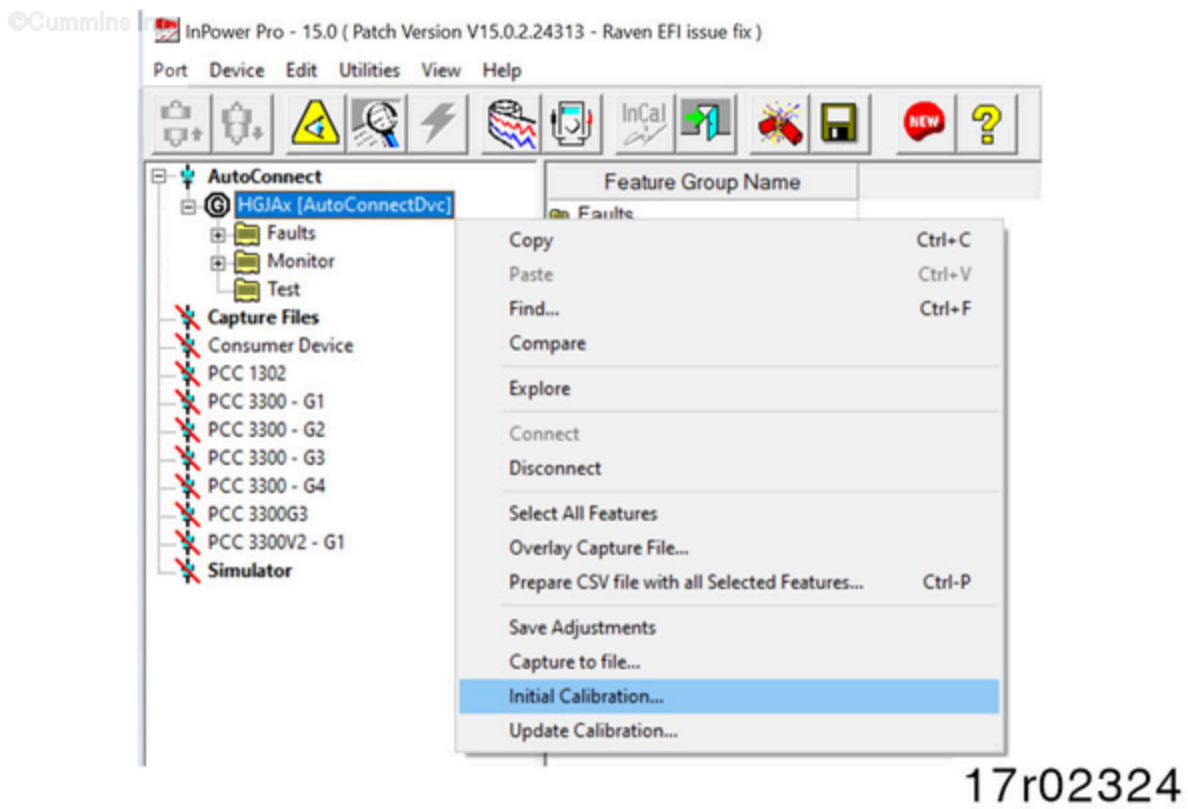
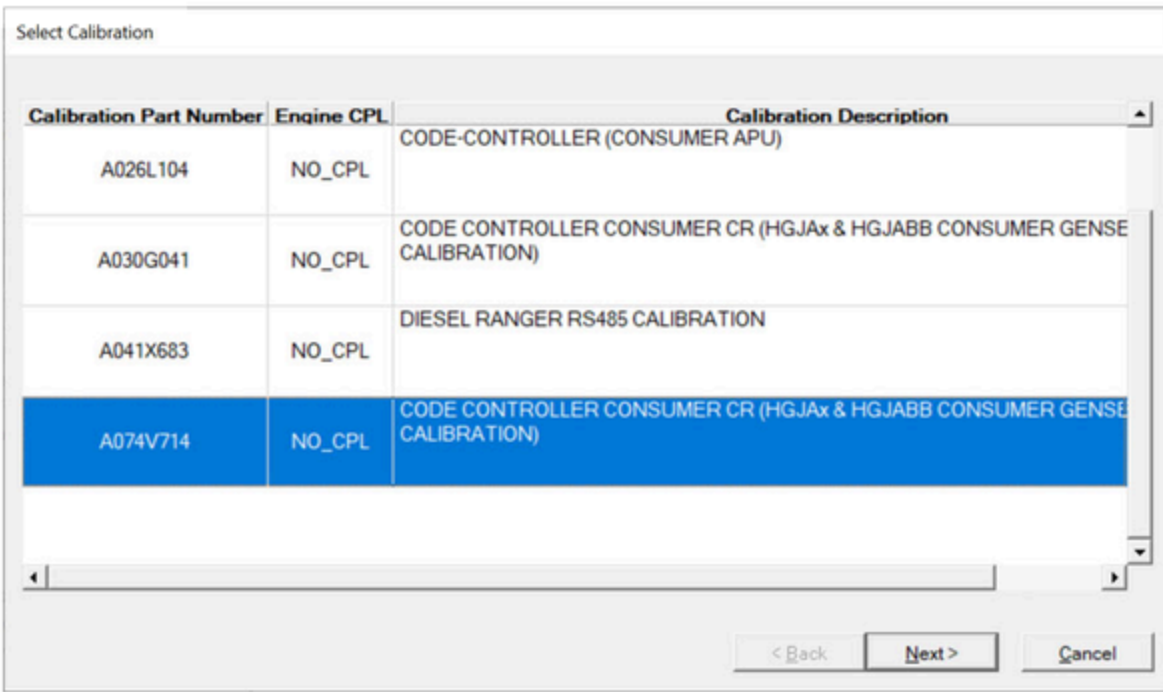


Figure 5, Initial Calibration

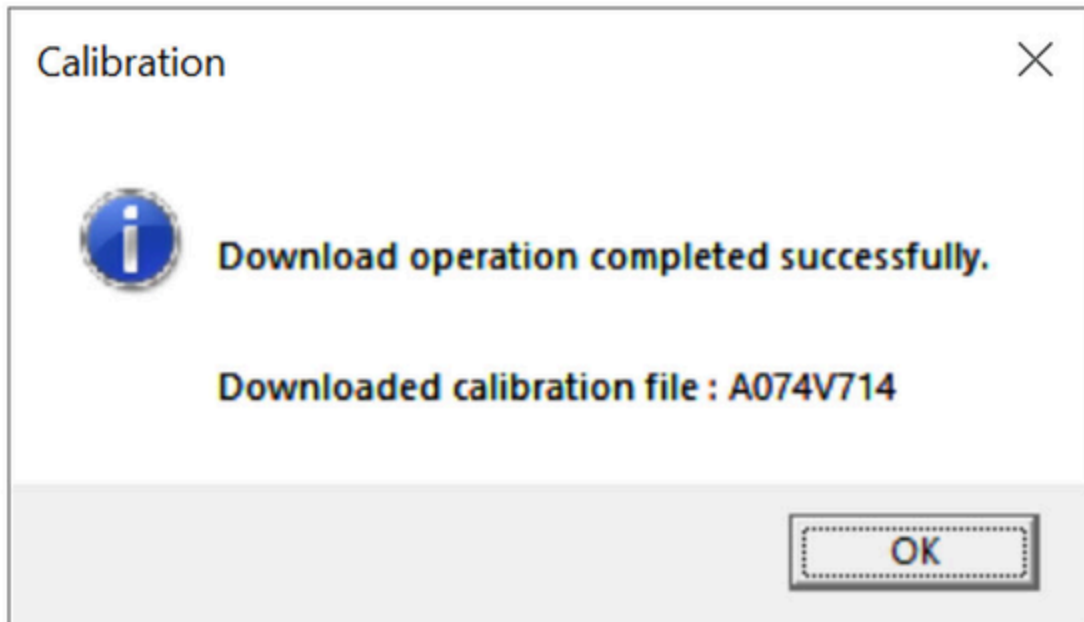
8. Find & Select Calibration P/N: A074V714 & Click "NEXT"



17r02325

Figure 6, Calibration file

9. Press "NEXT/FINISH" & "YES/OK" on any subsequent windows that show up.
10. Once it has been programmed successfully, you will see this message:



17r02326

Figure 7, Confirmation pop-up

11. Press OK and disconnect from generator set.

Claim filing instructions:

- **Fail Code:** O0YDAA
- **Account Code:** 65
- **Campaign Code:** 5813
- **Travel:** Covered at RDC/MDC's only
- **SRT's:**
 - 00-90F Admin Time: 0.2
 - 00-724 Electronic Service tools Operate: 0.2
 - Optional: ONLY FOR TRAVEL TO RDC
 - 00-902 Admin Time Road/Field Repair 0.3
 - Optional: ONLY FOR UNPACKAGING AND REPACKING AT RDC/OEM
 - 99-901 Unpack and Re-pack Generator Set: 1.0
- **Expiration Date:** April 30th, 2035
- **Other Claimable:** not allowed
- **Parts:** No Cummins Parts
- **GSN List:** See TSB250060 -A

Note: When filing a claim, please put in the claim narrative calibration number and version before and after work.

Production Status

Implemented for production. See Table 1.

Table 1, Production Information

GSN First	Build Date¹	Plant
A250413136	Jan 31 st , 2025	Fridley, MN

¹Generator Set/Engine build date can be found on the Generator Set/engine dataplate.

Document History

Date	Details
2025-3-25	Module Created

Last Modified: 26-Mar-2025
