

## Technical Service Bulletin

<b>Topic</b>	35 Leaks from transmission
<b>Market area</b>	United States 444 Volkswagen of America, Inc. (6444)
<b>Brand</b>	Audi
<b>Transaction No.</b>	2028085/7
<b>Level</b>	EH
<b>Status</b>	Released for publishing
<b>Release date</b>	Mar 17, 2025

### New customer code

Object of complaint	Complaint type	Position
transmission -> transmission housing, parking lock -> transmission oil pan	component, automotive fluids -> damaged	
transmission -> cooling, oils	leaks	
transmission -> transmission housing, parking lock	leaks	
transmission -> input shafts	leaks	
transmission -> transfer case, differential, power distribution	leaks	
vehicle service -> inspection, maintenance -> maintenance table -> inspection service	service: process -> with complaint confirmation	
entire vehicle -> vehicle areas -> engine compartment	leaks -> oil leaking	
entire vehicle -> vehicle areas -> vehicle front	leaks -> not watertight	
entire vehicle -> assemblies -> transmission assembly	leaks -> not watertight	
entire vehicle -> assemblies -> transmission assembly	leaks -> oil leaking	
transmission -> transmission housing, parking lock -> transmission oil pan	component, automotive fluids -> cracked/broken	

## Vehicle data

### S4, S5, RS5, S6, and S7 vehicles with S-Tronic 7 speed 0B5

#### Sales types

Type	MY	Brand	Designation	Engine code	Gearbox code	Final drive code
4G*Y	2013	A		*	*	*
4G*Y	2014	A		*	*	*
4G*Y	2015	A		*	*	*
4G*Y	2016	A		*	*	*
4G*Y	2017	A		*	*	*
8F*Y	2010	A		*	*	*
8F*Y	2011	A		*	*	*
8F*Y	2012	A		*	*	*

Type	MY	Brand	Designation	Engine code	Gearbox code	Final drive code
8F*Y	2013	A		*	*	*
8F*Y	2014	A		*	*	*
8F*Y	2015	A		*	*	*
8F*Y	2016	A		*	*	*
8F*Y	2017	A		*	*	*
8K*Y	2010	A		*	*	*
8K*Y	2011	A		*	*	*
8K*Y	2012	A		*	*	*
8K*Y	2013	A		*	*	*
8K*Y	2014	A		*	*	*
8K*Y	2015	A		*	*	*
8K*Y	2016	A		*	*	*
8T*Y	2010	A		*	*	*
8T*Y	2011	A		*	*	*
8T*Y	2012	A		*	*	*
8T*Y	2013	A		*	*	*
8T*Y	2014	A		*	*	*
8T*Y	2015	A		*	*	*
8T*Y	2016	A		*	*	*

## Documents

Document name
<a href="#">master.xml</a>
<a href="#">vehicledatadoc.doc</a>

## Condition

REVISION HISTORY		
Revision	Date	Purpose
7	-	Revised header (Updated for clarity) Revised <i>Warranty</i> (Updated warranty table) Revised <i>Service</i> (Updated steps)
6	07/30/2018	Revised <i>Warranty</i> (Updated Claim Types) Revised <i>Required Parts and Tools</i> (Updated Final Drive Oil Part Number)
5	06/18/2015	Revised header data (Updated models and model years)

### Customer states:

- There is oil leaking under the vehicle.

## Technical Background

Deviation on gearbox housing.

## Production Solution

Not applicable.

## Service

- Locate the leak by first thoroughly cleaning the stained area and allowing it to dry fully. Then, apply talcum spray (or similar) to the area that was stained with oil (Figure 4).
- Warm up the vehicle with a test drive then re-check for leaks. Upload images to Doc-IT.
- A clear identification with vehicle identification number for every photo is necessary (e.g. adhesive tape with the VIN on the part to be documented).



**Figure 1.** Leak located with talcum spray.

**Leak is found between the gearbox housing and intermediate housing:**

**! NOTICE**

In the case of a leak from between the gearbox and intermediate housing, oil can migrate into the gap between the transmission oil pan and gearbox housing. This oil can spread over the complete pan area. A visual check can suggest a leaking transmission oil pan or seal. Therefore, the check below must be carried out to avoid repeat repairs.



If a leak is found between the transmission housing and intermediate housing, seal off the gearbox according to the repair manual.



**When removing and fitting the intermediate housing make sure that the sensor module (plug, lugs) does not get damaged by the oil deflector. This can be achieved by carefully removing, placing on, observing and turning the parts.**

Use caution when lifting or lowering intermediate housing to avoid damage to components.



**Figure 2.** Caution points: drip tray Sensor module connector.



**Replace the shaft seal of the gearbox input shaft (double shaft seal) after assembling the gearbox housing according to the repair manual.**

**Leak is found between the intermediate housing and end cover:**



***Figure 3. Leak between intermediate housing and end cover***

If a leak is found between the intermediate housing and end cover the transmission must be sealed according to the repair manual.

**Leak is found from the transmission oil pan:**

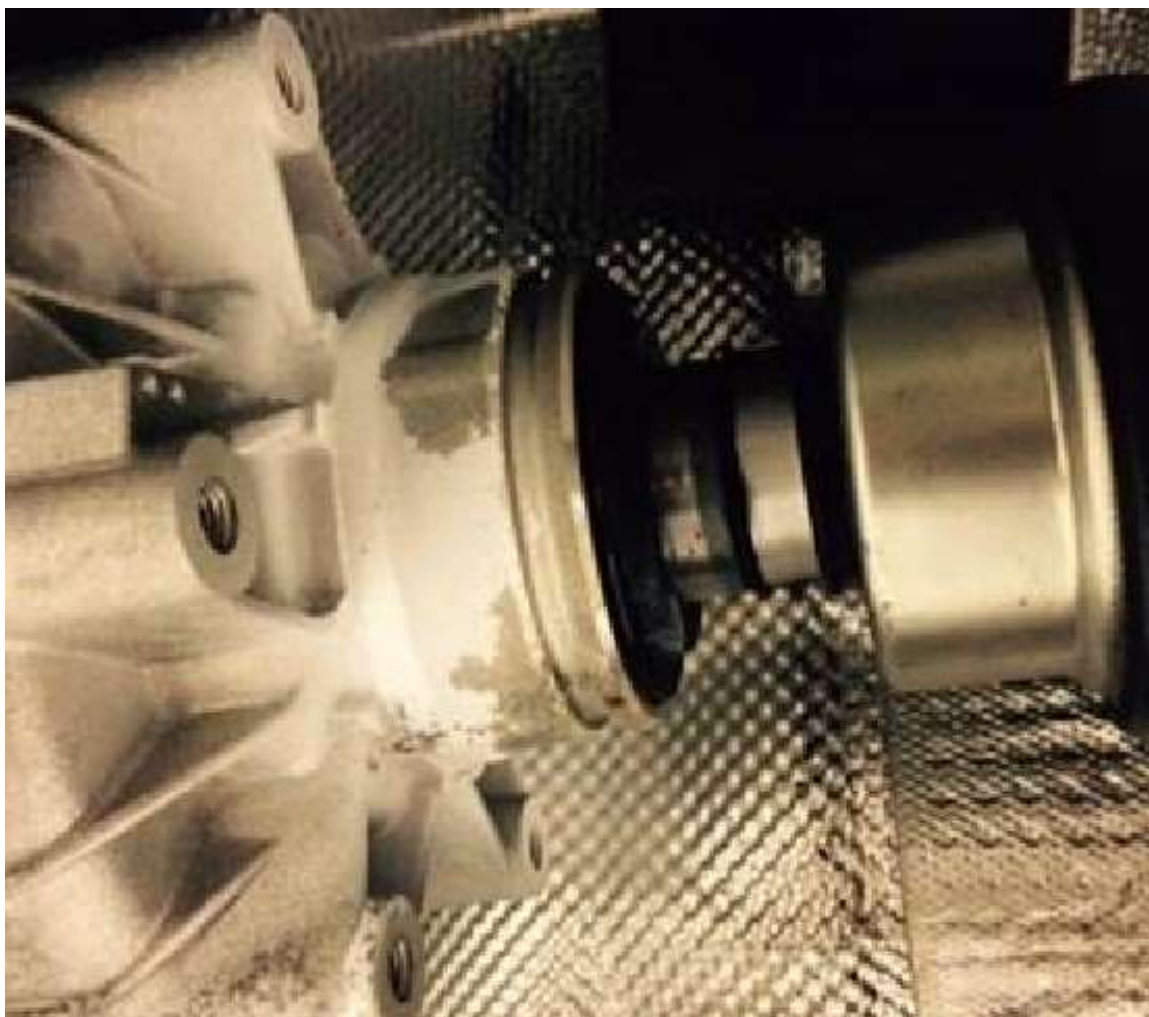
If a leak from between the transmission and intermediate housing can be ruled out, further leak locations are possible:

- a) Leak from the oil pan seal.
  - b) Crack in the oil pan.
- 
- Remove the oil pan according to the repair manual and check the Mechatronics mounting bolts torque for a correct fit per the repair manual spec. Replace any loose bolts and tighten to the torque listed in the repair manual.
  - Check the inside of the oil pan for damage (caused by cracks or loose bolts) and replace if necessary.
  - If no damage on the oil sump is visible, it is enough to replace the oil sump seal.



**Figure 4.** Damaged oil pan because of loose bolts.

**Leak on self-locking center differential/front driveshaft flange:**



**Figure 5.** Gearbox leaks between self-locking center differential and driveshaft.

If a leak is found between the self-locking center differential and driveshaft, replace the oil seal according to the repair manual.

## Warranty

<b>Claim Type:</b>	<ul style="list-style-type: none"> <li>If the vehicle is outside of any warranty, this Technical Service Bulletin is informational only.</li> </ul>		
<b>Service Number:</b>	Intermediate housing leak: 3737 End cover leak: 3965 Leak on self-locking center differential/front driveshaft flange: 3982 Transmission pan seal: 3756 Transmission oil sump: 3755		
<b>Damage Code:</b>	0050		
<b>Labor Operations:</b>	Check gearbox housing for leaks	3437 0199	90 TU
	Remove and install oil sump	3460 1900	See SRT with associated operations

Claim Comment:	Check mechatronic unit	3511 0199	30 TU
	Check oil sump	3460 0199	10 TU
	or		
	Check gearbox housing for leaks	3437 0199	90 TU
	Remove and install oil seal	3982 19xx	See SRT with associated operations
	or		
	Check gearbox housing for leaks	3437 0199	90 TU
	Seal gearbox end cover	3435 5199	330 TU
	or		
	Check gearbox housing for leaks	3437 0199	90 TU
	Remove and install gearbox	3435 19xx	See SRT with associated operations
	Seal gearbox housing	3437 5199	570 TU
	Charge battery	2706 8950	See SRT with associated operations
	GFF	0150 0000	Time stated on the diagnostic protocol
	As per TSB 2028085/7		

All warranty claims submitted for payment must be in accordance with the *Audi Warranty Policies and Procedures Manual*. Claims are subject to review or audit by Audi Warranty.

## Additional Information

All part and service references provided in this TSB (**2028085**) are subject to change and/or removal. Always check with your Parts Department and/or ETKA for the latest information and parts bulletins. Please check the Repair Manual for fasteners, bolts, nuts, and screws that require replacement during the repair.

©2025 Audi of America, Inc. All rights reserved. The information contained in this document is based on the latest information available at the time of printing and is subject to the copyright and other intellectual property rights of Audi of America, Inc., its affiliated companies, and its licensors. All rights are reserved to make changes at any time without notice. No part of this document may be reproduced, stored in a retrieval system, or transmitted in any form or by any means, electronic, mechanical, photocopying, recording, or otherwise, nor may these materials be modified or reposted to other sites, without the prior expressed written permission of the publisher.