



# Spartan Fire, LLC

Technical Service Bulletin  
TSB25-810-001

**DATE:** 3/5/2025

**APPLIES TO:** This service bulletin applies to certain model year 2025-2026 Metro Star, and 2025 Gladiator and KME Panther model emergency response chassis cabs.

**CONDITION:** Certain units are shipped short of the AB10 IMMI slave module.

**CORRECTION:** Install Spartan provided slave module.

**LABOR ALLOCATION:** 1 hour

**CLASSIFICATION:** T3

## **ATTENTION!!!**

**A PHOTO OF THE NEW IMMI MODULE SERIAL NUMBER AND CORRESPONDING TRUCK VIN THAT MODULE IS BEING INSTALLED ON WILL NEED TO BE EMAILED TO:**

**[ANDY.HAIGH@SPARTANMOTORS.COM](mailto:ANDY.HAIGH@SPARTANMOTORS.COM)**

**THIS ENSURES THE CORRECT SERIAL NUMBER IS RECORDED TO THE PROPER TRUCK RECORD.**

### **GENERAL INSTRUCTIONS:**

Thoroughly review entire service bulletin before starting work. If there are questions or concerns with steps defined in this service bulletin, contact Spartan Fire, LLC. Customer & Product Support Group.

All applicable industry safety standards must be followed when performing work identified in this procedure.

Service Bulletins are intended for use by Professional Technicians only. They are written to guide Professional Technicians in performing service to vehicles of specific nature in conjunction with industry standards. Professional Technicians should be appropriately trained on industry standards and have the tools and equipment to perform procedures safely and properly.



# Spartan Fire, LLC

Technical Service Bulletin  
TSB25-810-001

## Step By Step Instructions

- 1) Locate fuse panel in center dash. Find SRS IGN PWR fuse and remove fuse. See Figure 2.1 and 2.2 below.

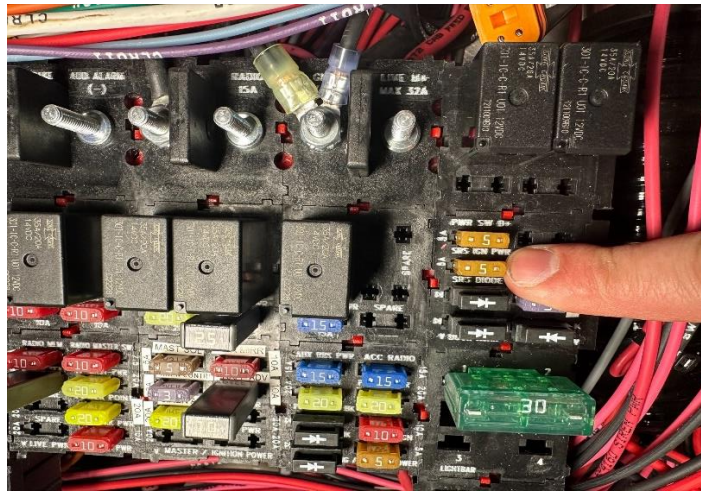


Figure 2.1

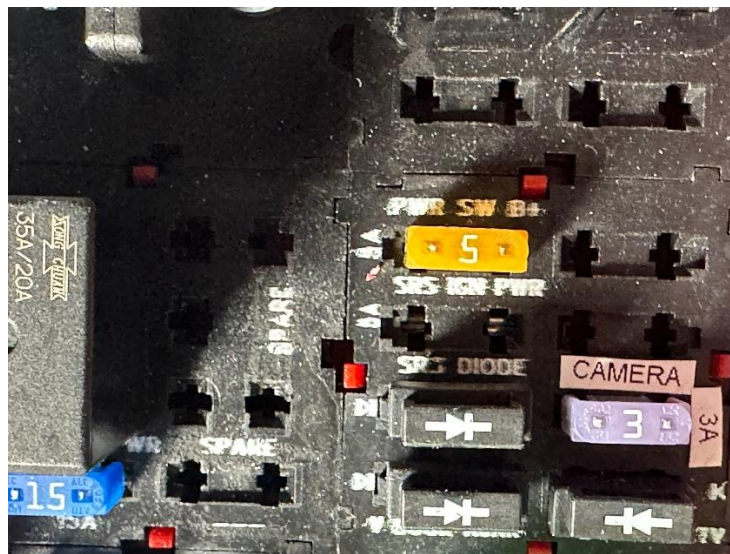


Figure 2.2

Service Bulletins are intended for use by Professional Technicians only. They are written to guide Professional Technicians in performing service to vehicles of specific nature in conjunction with industry standards. Professional Technicians should be appropriately trained on industry standards and have the tools and equipment to perform procedures safely and properly.



## Spartan Fire, LLC

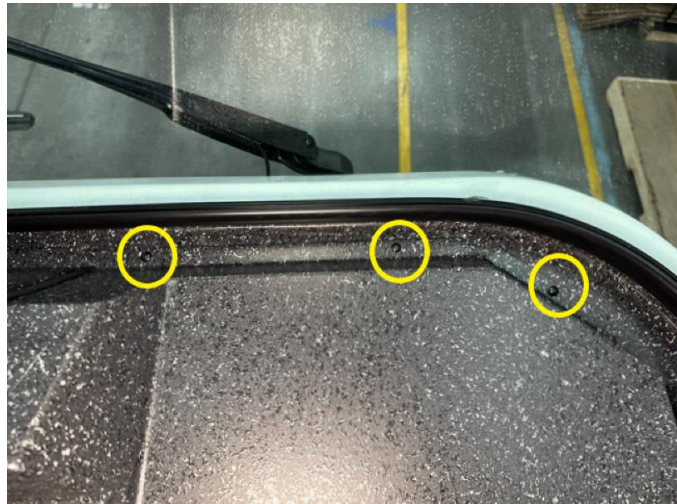
Technical Service Bulletin  
TSB25-810-001

- 2) Once the fuse is removed, locate officer/passenger side dash panel lower screws and remove. *See Figure 3.1*



**Figure 3.1**

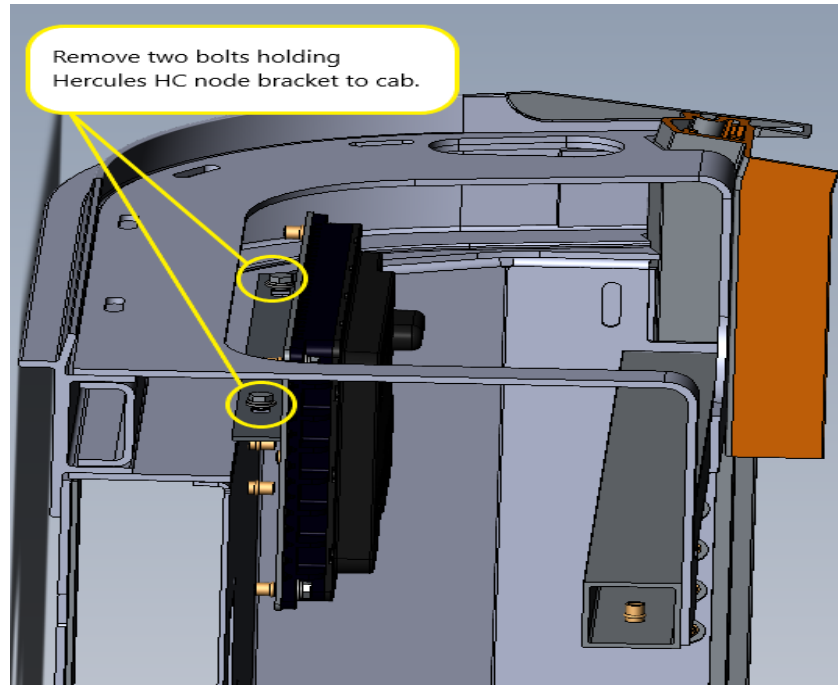
- 3) Locate and remove the officer/passenger side dash panel upper screws near windshield. Remove the dash panel. *See Figure 3.2*



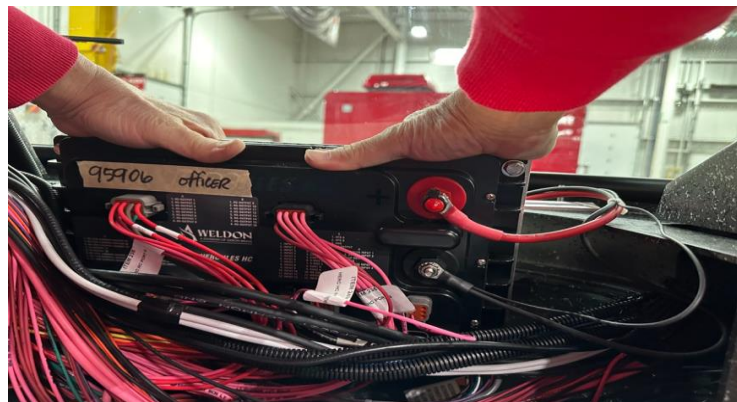
**Figure 3.2**

Service Bulletins are intended for use by Professional Technicians only. They are written to guide Professional Technicians in performing service to vehicles of specific nature in conjunction with industry standards. Professional Technicians should be appropriately trained on industry standards and have the tools and equipment to perform procedures safely and properly.

- 4) With dash panel removed, locate the Weldon Hercules HC node and remove for access to the IMMI slave module. *See Figures 4.1 and 4.2*



**Figure 4.1**



**Figure 4.2**

Service Bulletins are intended for use by Professional Technicians only. They are written to guide Professional Technicians in performing service to vehicles of specific nature in conjunction with industry standards. Professional Technicians should be appropriately trained on industry standards and have the tools and equipment to perform procedures safely and properly.





# Spartan Fire, LLC

## Technical Service Bulletin TSB25-810-001

- 5) Remove IMMI slave module mounting fasteners that were previously installed at factory.
- 6) Take a photo of new IMMI slave module and ensure the photo clearly shows the serial number legibly. Email photo to [andy.haigh@spartanmotors.com](mailto:andy.haigh@spartanmotors.com).
- 7) Install new slave module using the fasteners removed in step 5. See Figure 5.1

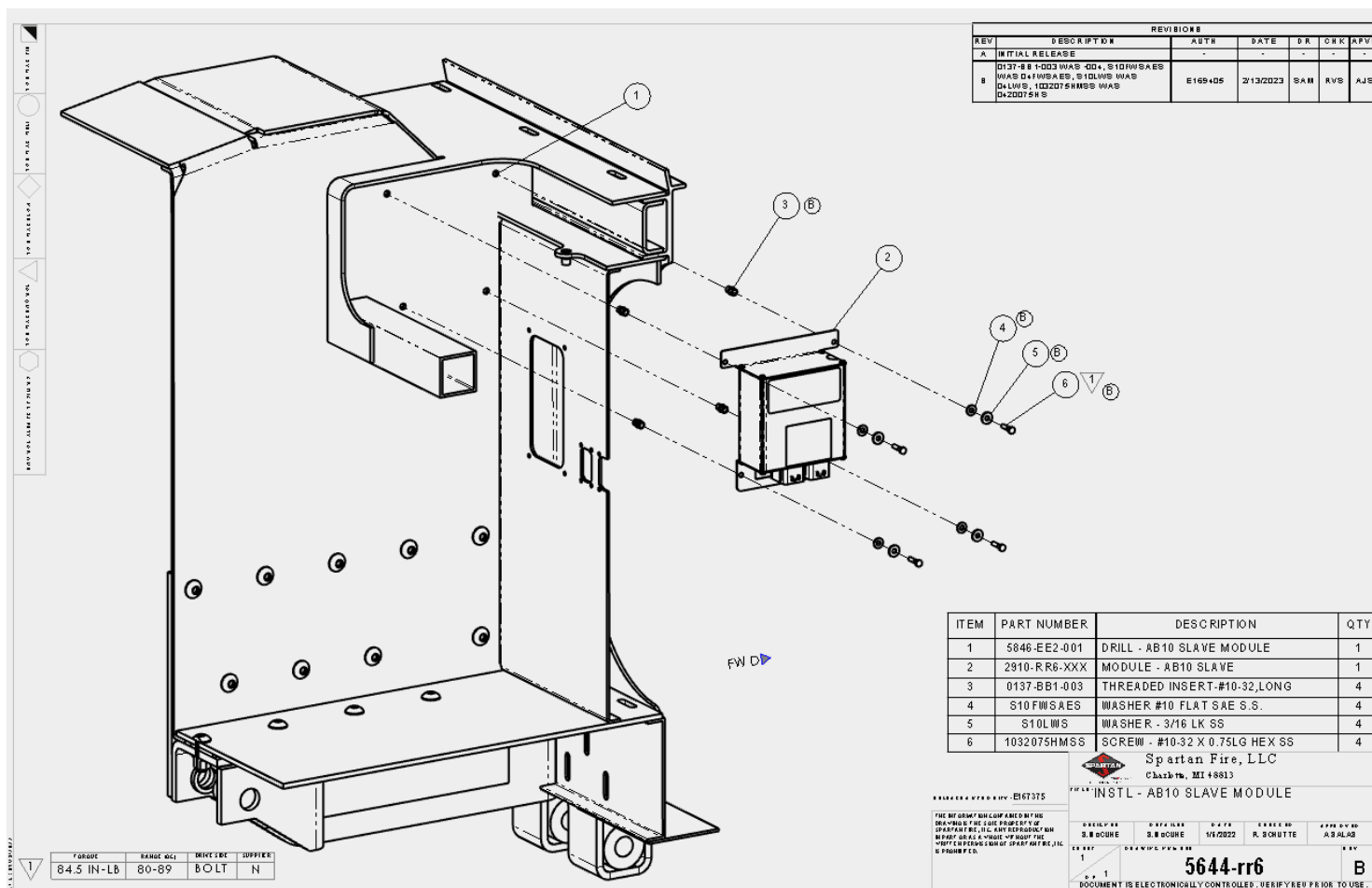


Figure 5.1

Service Bulletins are intended for use by Professional Technicians only. They are written to guide Professional Technicians in performing service to vehicles of specific nature in conjunction with industry standards. Professional Technicians should be appropriately trained on industry standards and have the tools and equipment to perform procedures safely and properly.

- 8) Locate the harness connectors nearby in static bag with warning label attached.  
Remove the static bag and warning label and dispose of properly. *See Figure 6.1*



**Figure 6.1**

- 9) Connect harness connectors to the bottom of the new slave module.
- 10) Reinstall Hercules HC node.
- 11) Reinstall officer/passenger dash assembly.
- 12) Reinstall SRS IGN PWR fuse.
- 13) Turn Master and Ignition switch on and verify SRS Fault light is off.

Service Bulletins are intended for use by Professional Technicians only. They are written to guide Professional Technicians in performing service to vehicles of specific nature in conjunction with industry standards. Professional Technicians should be appropriately trained on industry standards and have the tools and equipment to perform procedures safely and properly.



## Spartan Fire, LLC

Technical Service Bulletin  
TSB25-810-001

- 14) Remove warning label that is zip tied to the park brake valve and dispose of label.  
*See Figure 7.1*



Figure 7.1

Service Bulletins are intended for use by Professional Technicians only. They are written to guide Professional Technicians in performing service to vehicles of specific nature in conjunction with industry standards. Professional Technicians should be appropriately trained on industry standards and have the tools and equipment to perform procedures safely and properly.



## Spartan Fire, LLC

### Technical Service Bulletin TSB25-810-001

- 15) If SRS light is on, connect to the vehicle's 9 pin diagnostic port under the driver's side dash using NEXIQ interface adapter and a PC equipped with IMMI diagnostic software.

Software is available at: <https://spartaner.com/downloads>

Password: customer#1

- 16) Open IMMI diagnostic software and select "Run Diagnostics". See Figure 8.1

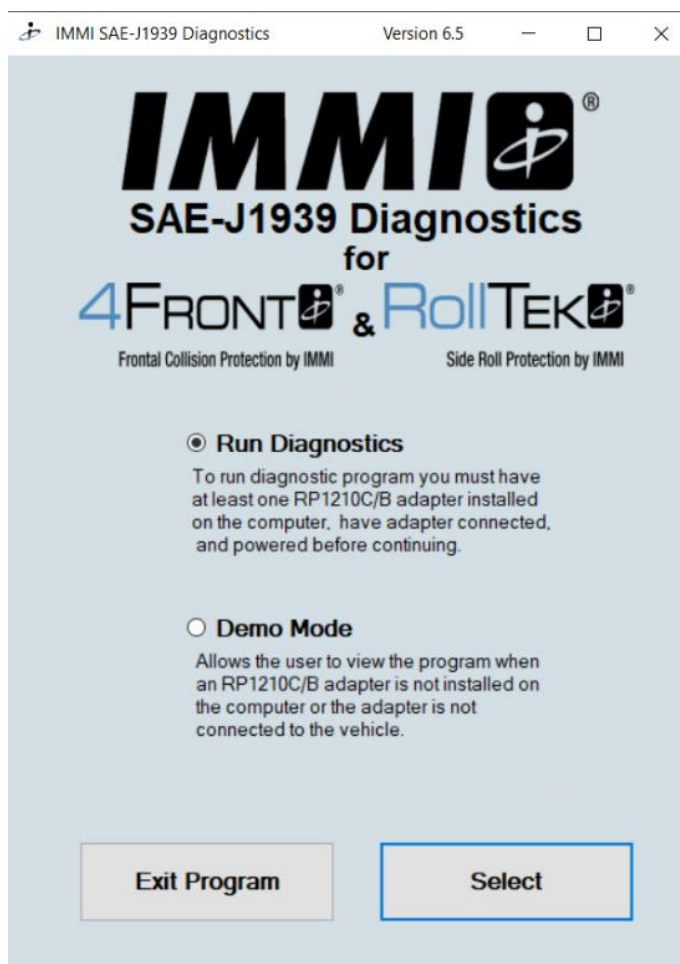


Figure 8.1

Service Bulletins are intended for use by Professional Technicians only. They are written to guide Professional Technicians in performing service to vehicles of specific nature in conjunction with industry standards. Professional Technicians should be appropriately trained on industry standards and have the tools and equipment to perform procedures safely and properly.





## Spartan Fire, LLC

Technical Service Bulletin  
TSB25-810-001

17) Select appropriate adapter from adapter list as shown in Figure 9.1.

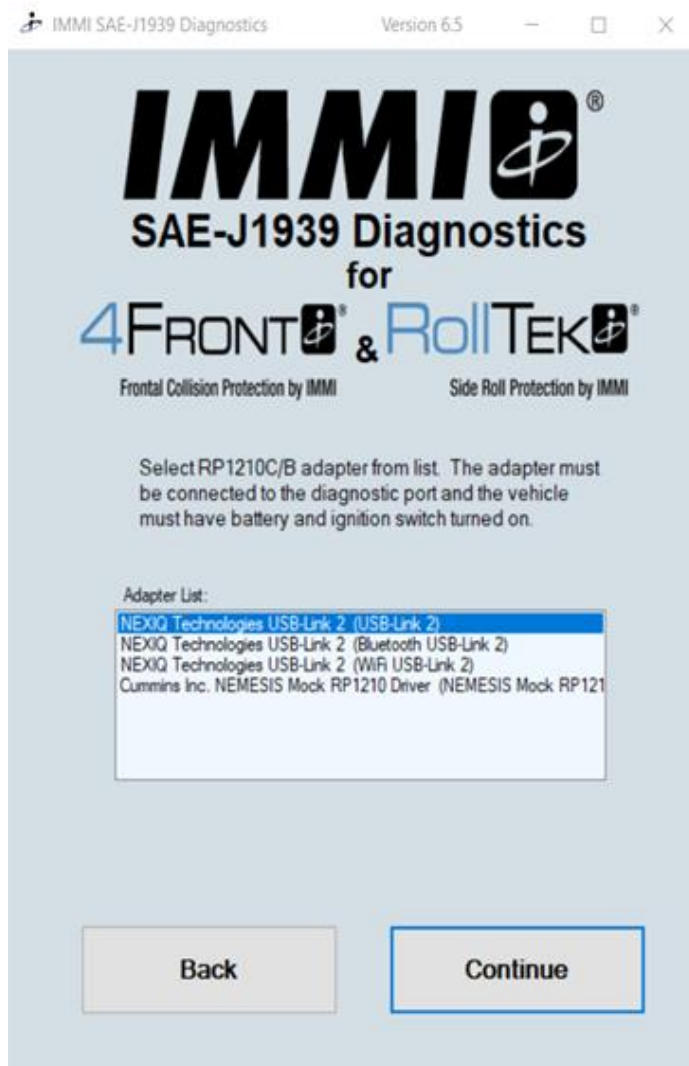


Figure 9.1

Service Bulletins are intended for use by Professional Technicians only. They are written to guide Professional Technicians in performing service to vehicles of specific nature in conjunction with industry standards. Professional Technicians should be appropriately trained on industry standards and have the tools and equipment to perform procedures safely and properly.



## Spartan Fire, LLC

## Technical Service Bulletin TSB25-810-001

18) Select Read Sensors. See Figure 10.1

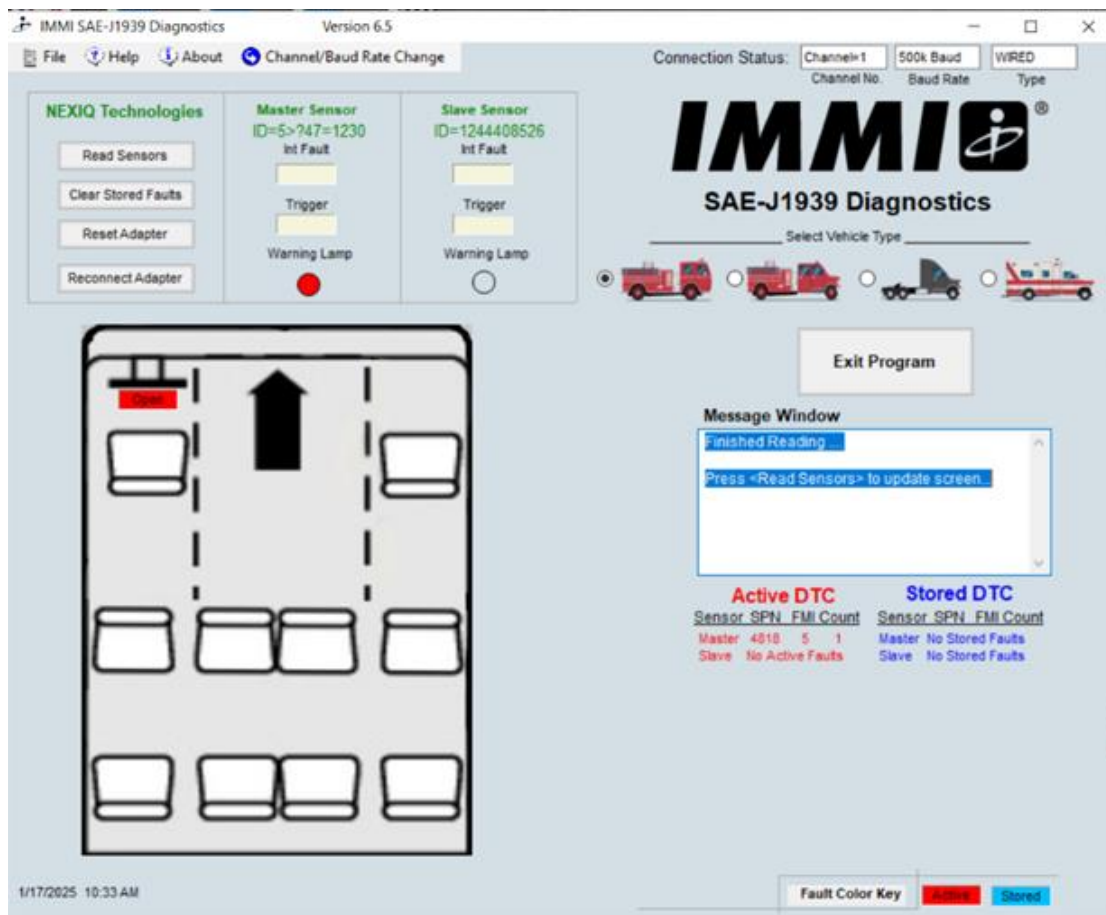


Figure 10.1

19) Utilizing the software, troubleshoot active faults and repair as needed. For further support diagnosing SRS faults, contact Spartan customer support at 1-800-867-6478.

Service Bulletins are intended for use by Professional Technicians only. They are written to guide Professional Technicians in performing service to vehicles of specific nature in conjunction with industry standards. Professional Technicians should be appropriately trained on industry standards and have the tools and equipment to perform procedures safely and properly.