

54–276 Load Dump Switch Inspection and Installation on Dometic Refrigerators

TSB-54-276-FTL

Creation Date: 2021-12-30

Last Revision Date: 2025-03-26

Engine or Vehicle Affected:

► Cascadia

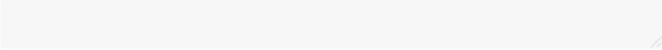
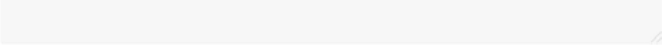
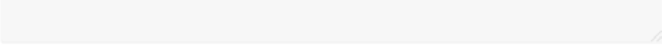
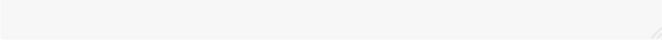
Description of Revisions: This bulletin replaces the version dated December 2021. The SRT code has been updated, and the warranty statement has been added.

Warranty applies to this described condition. See the warranty information at the end of this bulletin.

Described Condition

On Cascadia vehicles, some Dometic® refrigerators (p/n A22-64783-001) are not working because the terminals on the load dump switch are not connected to the Danfoss module. If a refrigerator is not working, use the instructions in this bulletin to verify that the load dump switch is installed correctly.

Instructions

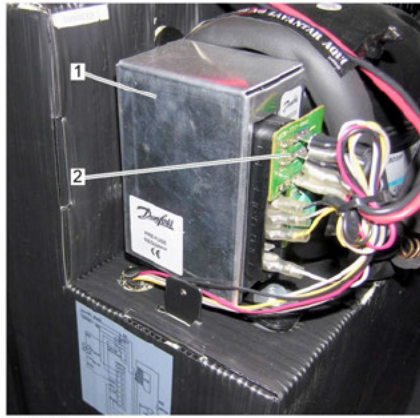
1. Park the vehicle, apply the parking brakes, and shut down the engine. Chock the tires.

2. Open the refrigerator door to access the three mounting bolts on the refrigerator. See Fig. 1. Remove the bolts.

3. Pull the refrigerator out of its mounting location, then set it on the cab floor.

4. Unplug the refrigerator.

5. Locate the Danfoss module on the back of the refrigerator. See Fig. 2.



04/29/2013

f680032

Fig. 1, Refrigerator Mounting Bolts

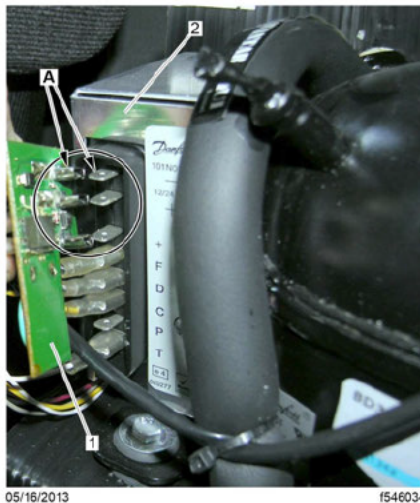


1. Danfoss Module

2. Load Dump Switch

Fig. 2, Load Dump Switch Location

6. Gently pull the load dump switch from the Danfoss module and inspect the terminals to make sure they are not bent or misaligned. If the load dump switch is damaged and cannot be installed properly, order kit TMN 3311465 000 to replace the switch.
7. Connect the load dump switch, making sure that all three terminals are properly engaged with the Danfoss module. See Fig. 3.



A. The three terminals must be aligned and be properly seated.

1. Load Dump Switch

2. Danfoss Module

Fig. 3, Load Dump Switch Installation

8. Plug the refrigerator in and make sure that it is operating properly.
9. Position the refrigerator in its mounting location, then install the three mounting bolts. Tighten the bolts securely.

Warranty

This procedure is warrantable only if the described condition exists and the repair is performed within the applicable base or extended coverage warranty period. If a failure is not found, this procedure is considered preventive and warranty does not apply.

See [Table 1](#) for QuickClaim damage code and labor allowance information. Refer to this service bulletin by number at the beginning of the claim comments. See [Table 2](#) for OWL VMRS codes and labor allowance information. Enter this service bulletin number in the *Service Bulletin #* field.

Table 1, QuickClaim Damage Code and Labor Allowance

Damage Code	SRT Code	Description	Time: Hours
719-000651400	719-5001A	Load Dump Switch Inspection, Installation	0.2

Table 1, QuickClaim Damage Code and Labor Allowance

Table 2, OWL VMRS Codes and Labor Allowance

Primary Failed Part	Component Code	Cause Code	SRT Code	Description	Time: Hours
Load Dump Switch	052-008-018	23	719-5001A	Load Dump Switch Inspection, Installation	0.2

Table 2, OWL VMRS Codes and Labor Allowance

Note:
 052-008-018
 INSPECT
 INSTALL
 F12
 F22

CONTACT INFORMATION

For questions, please create a Service Technical Request using the DTTS Application on the DTNA Portal.

Document Number: 0000129466

Topic Publication Date: 2025-03-26