

MAS004620 MCL 25-16

**Circular Letter**

FROM: Maserati TSO

TO: Maserati Network

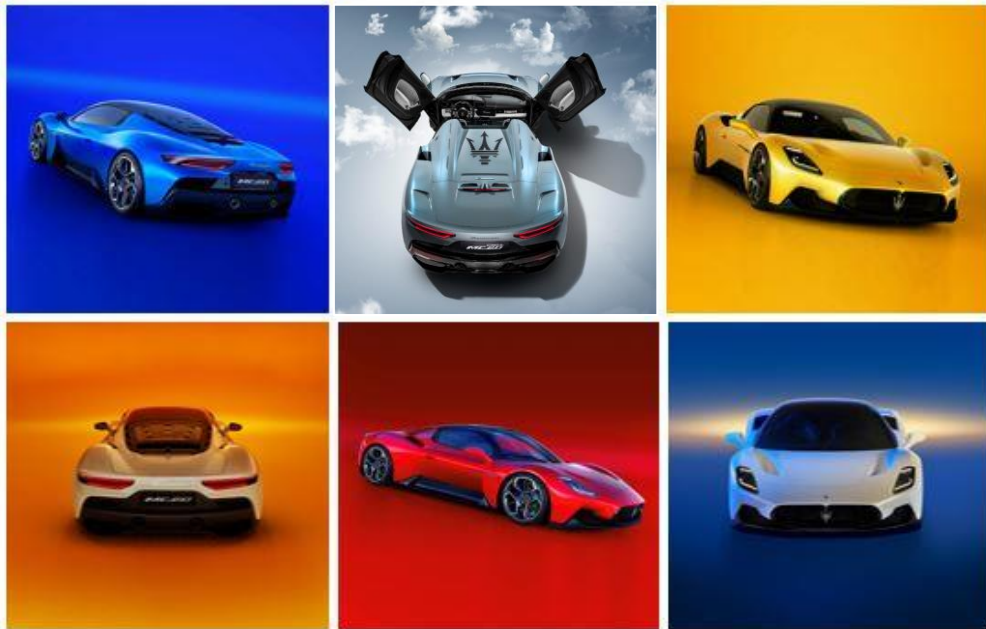


**Maserati**

PERSONAL SERVICE LAB

MASTERS OF CARE

# MC20 Coupè & Cielo Pre Delivery Inspection (PDI) process and relevant Check Lists



DATE: MARCH 6, 2025

Dear All,

Maserati is Innovative by Nature, unique by Design and fueled by Passion. This is what we are and what the Maserati MC20 represents to us. The *first of its kind*.

Maserati was established by producing wonderful sports cars, the DNA of which is still reflected in the MC20. The name itself resounds already as a complete and exciting programme: MC stands for Maserati Corse, while 20 refers to the year 2020 as a milestone for Maserati. This vehicle updates the legacy of the iconic MC12, with the MC20 the future is now.

There are many innovations. The heart of this fantastic super sports car beats under the bonnet: first and foremost the **Nettuno** engine with a design derived directly from technologies developed for Formula 1. If you are fond of numbers: a 3.0 V6 with dry sump capable of generating 630 hp at 7500 rpm and 730 Nm of torque from 3000 rpm in less than 1,500 kg of weight. Pretty good. So what can be said about the iconic **Butterfly doors**? Even from a standstill, the MC20 will seem to want to take flight, although not as much as it does on the road... and if you feel you're going too fast, you can always trust in a high-performance braking system and unrivalled handling.

And now, the coupé will be joined by a unique spyder version: the MC20 Cielo; where the name Cielo suggests that it is a model dedicated to "open air" driving pleasure, while retaining all the prerogatives of a true super sports car. What Cielo offers is a perfect mix of sportiness and luxury with a detail that is unique in the segment: the innovative **retractable glass roof**. In effect, the new Spyder is the encounter between the audacity of Maserati and the infinity of the sky, characterised by a special "sky feeling". The model is equipped with a state-of-the-art electrochromic glass, which instantly transforms from transparent to opaque at the touch of a button on the central screen, thanks to PDLC (Polymer Dispersed Liquid Crystal) technology. The roof is also best in class for thermal insulation and speed of opening and closing (just 12 seconds). With this ultimate expression of technology, the MC20 Cielo delivers a multi-sensory driving experience: it is all-encompassing with the closed and opaque roof, singular in the light inside the passenger compartment thanks to the transparent roof, and holistic with the open roof.

What we are delivering is not just a car but all our passion. That is why the pre-delivery inspection is more important than ever. To support you we have developed a specific Check List, adding new checks to test the new features and ensure that the customer can drive the car with maximum satisfaction.

The Check List will guide you through the various stages of vehicle inspection and preparation. Each Check List includes a set of actions and procedures to be carried out on each car during the PDI.

At the end of each car preparation, we ask you to keep a copy of the Check List, signed by the operator who has performed the checks, to support process traceability that could be helpful to improve the quality of the service offered, where necessary. Maserati could also request a copy of the same during the contractual warranty period for statistical purposes for its product improvement processes.

Delivering an MC20 is like delivering a piece of our history.

We remind you that our RAMs are available for any questions or support, and we kindly request your full cooperation in complying with the above instructions.

Thank you for your kind attention.

TECHNICAL SERVICE OPERATIONS