

Technical Journal

TITLE:

Outer Door Handle Jamming

REF NO: TJ 37186.2.0	ISSUING DEPARTMENT: Technical Service	CAR MARKET: United States and Canada	
PARTNER: 3 US 7515 Polestar		ISSUE DATE: 2025-02-06	STATUS DATE: 2025-02-12
FUNC GROUP: 8344	FUNC DESC: Handle, outer for side door	Page 1 of 10	

Attachment

File Name	File Size
TJI-530589-2_1_2_en-US.pdf	1.2113 MB

Rows beginning with * are modified

Note! If using a printed copy of this Technical Journal, first check for the latest online version.

DESCRIPTION:

*Updated method in attachment

If the customer complains of outer door handles that make noise or does not fold back in, follow advice under "Service".

CSC Customer Symptom Codes

Code	Description
VK	Doors/Exterior door handle problems

DTC Diagnostic Trouble Codes

Vehicle Type

Type	Eng	Eng Desc	Sales	Body	Gear	Steer	Model Year	Plant	Chassis range	Struc Week Range
359							2025-9999		-	202402-999952

SERVICE:

NOTE! Do not replace any part but follow the instruction (TJI-530589-2_1_2_en-US.pdf) in this journal.

Technical Journal 37186.2.0

Warranty claim info:

To get a warranty claim accepted for a job described in this TJ, use the corresponding VST OP number stated in this TJ.

Note that the TJ number must be stated in the repair order text.

VST Operation Number

VST Operation Number	Description
98781-2	Handle outer side door adjust acc. to TJ

LABOR TIME:

Labor time subject to change without notice.

VEHICLE REPORT:

Yes, please submit a Vehicle Report if the service solution described in this TJ has no effect. Use concern area "Vehicle Report Polestar" and sub concern area "Support not needed Polestar", use function group 8344.

To view TJ attachment continue to next page. This TJ has one attachment.

Polestar

TJ Instruction VCC-530589-2

Title	Exterior Door Handle	Page	1 (8)
Action	Product fix	Operation number:	98781-2

Issue	Date	Reason
1	2024-11	First issue

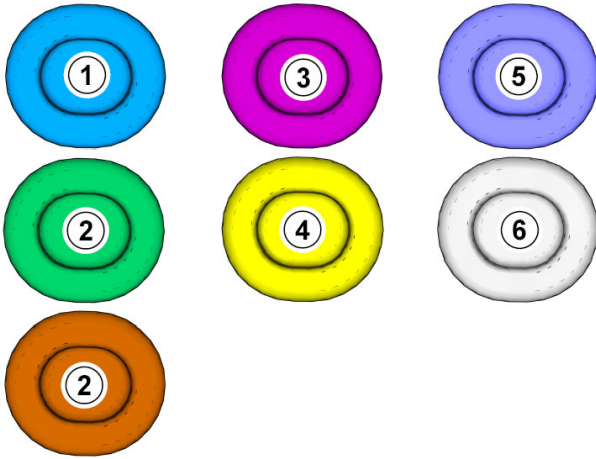
Affected vehicles

Model year	Model
2025	Polestar 3

Equipment

Designation	Part No.
Feeler gauge	
Screwdriver	
Carpet knife	

Color symbols

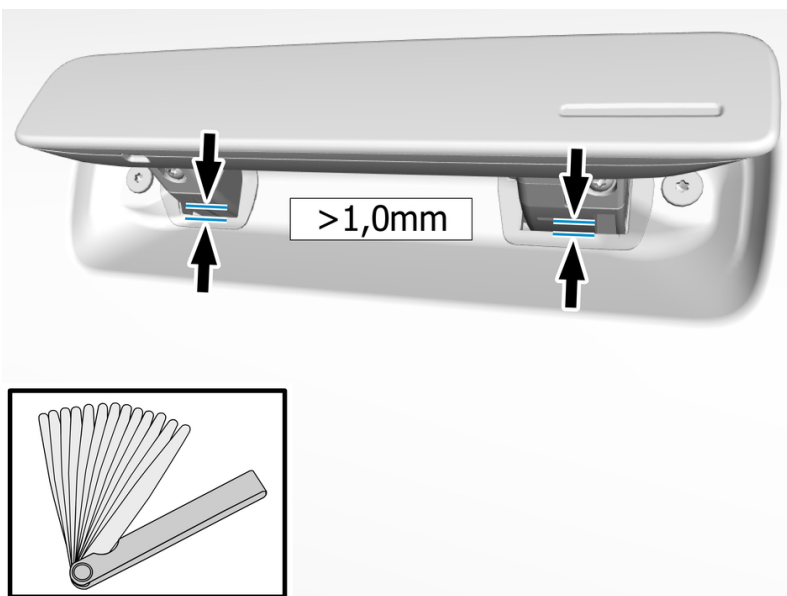


Note! This colour chart displays (in colour print and electronic version) the importance of the different colours used in the images of the method steps.

- 1 . Used for focused component, the component with which you will do something.
- 2 . Used as extra colors when you need to show or differentiate additional parts.
- 3 . Used for attachments that are to be removed/installed. May be screws, clips, connectors, etc.
- 4 . Used when the component is not fully removed from the vehicle but only hung to the side.
- 5 . Used for standard tools and special tools.
- 6 . Used as background color for vehicle components.

Removal

Applies to front door

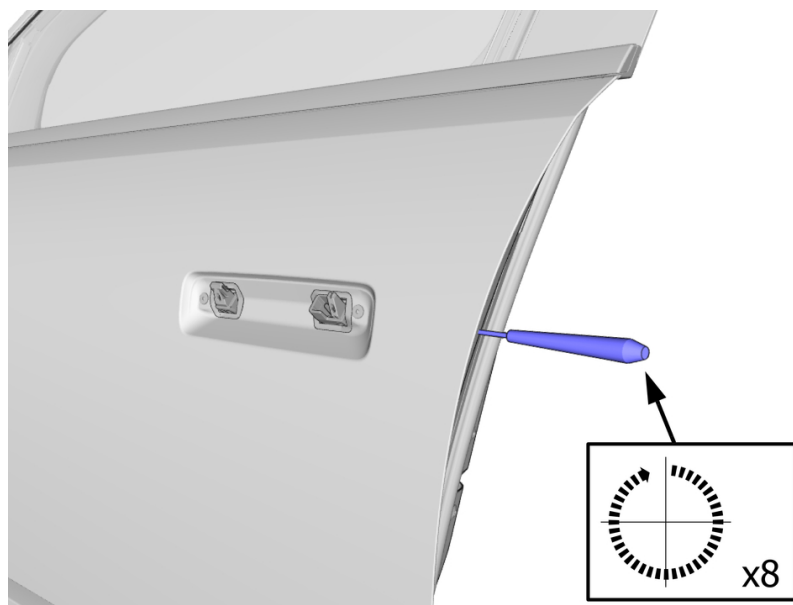


Check the value.

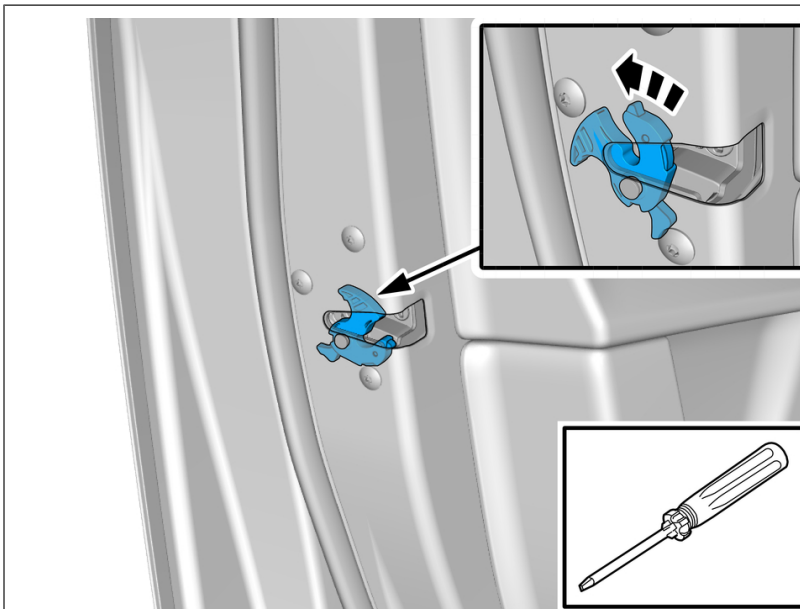
Use: Feeler gauge

If necessary
Follow the action information below.

Remove handle outer door front , refer to:
Removal, replacement and installation
8 - Body and interior
83 - Doors and lids
834 - lock, handle



Note! Loosen the screw clockwise.

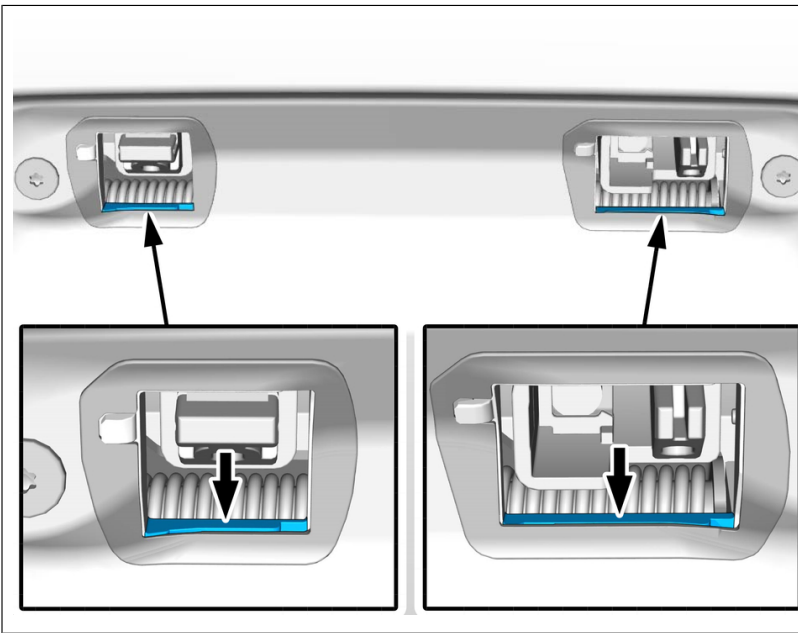


Rotate marked component according to image.

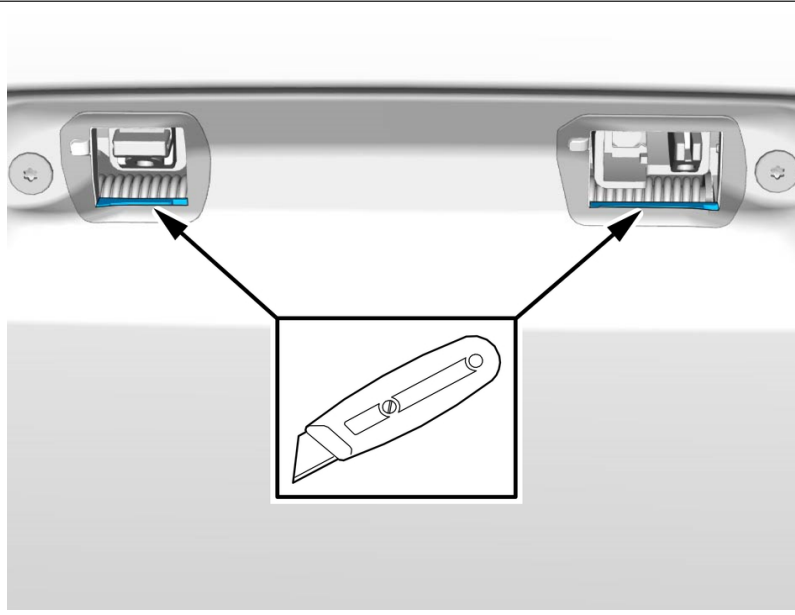
Use: Screwdriver



Lock the vehicle.



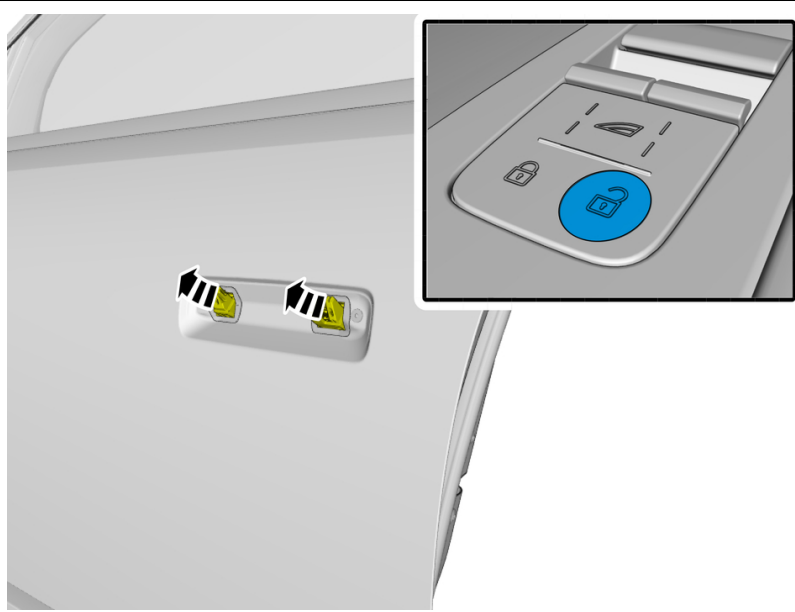
Note! Orientation view



Caution! Cut carefully to avoid unintentional damage or personal injury.

Remove the marked parts.

Use: Carpet knife



Unlock the vehicle.

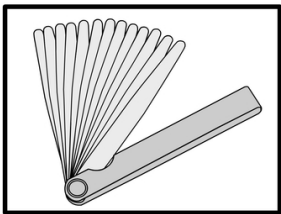
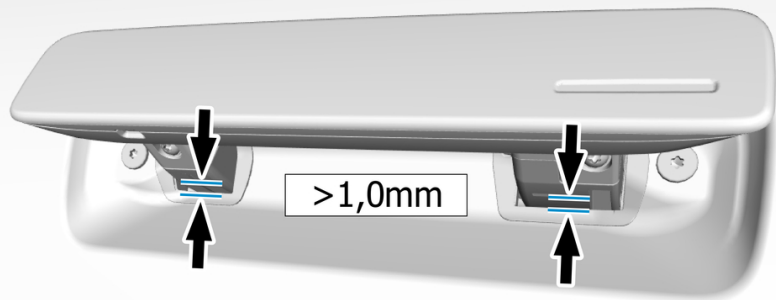
Installation

To install, reverse the removal procedure.

Applies to rear door

Check the value.

Use: Feeler gauge

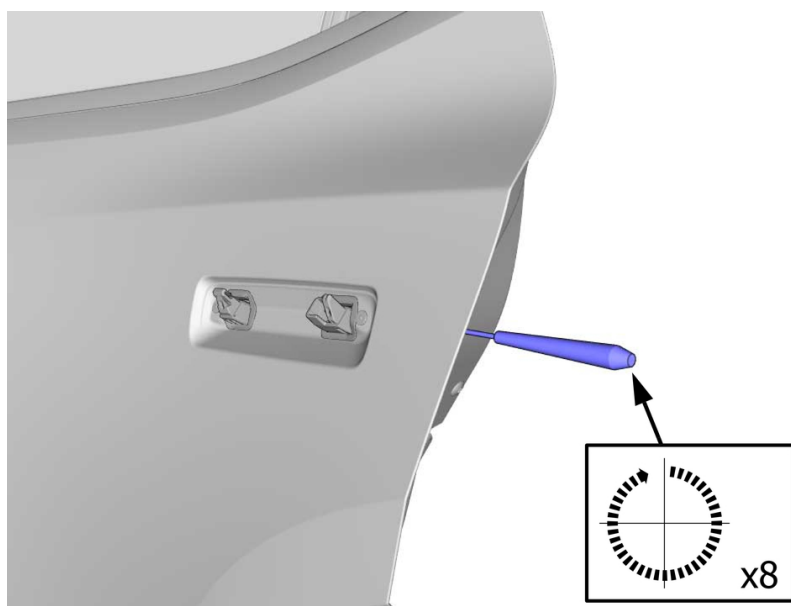


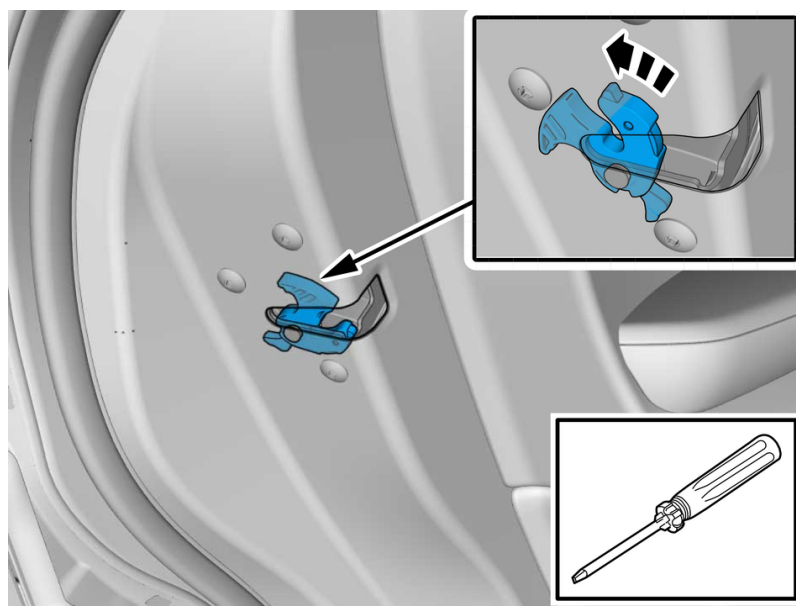
If necessary

Follow the action information below.

Remove outer handle, rear door , refer to:
Removal, replacement and installation
8 - Body and interior
83 - Doors and lids
834 - lock, handle

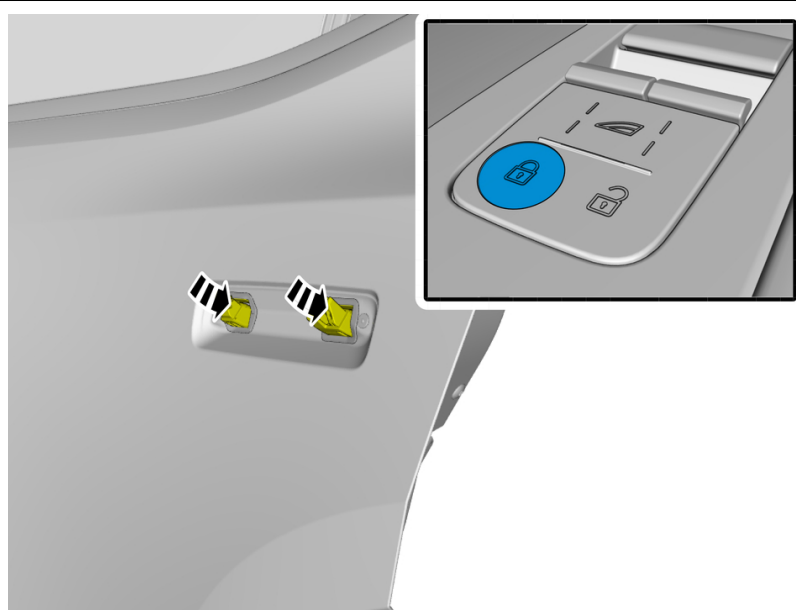
Note! Loosen the screw clockwise.



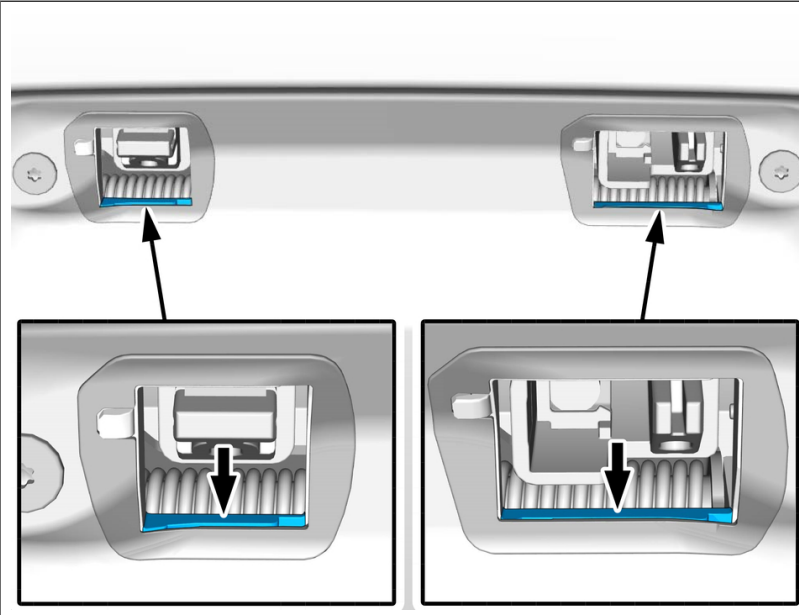


Rotate marked component according to image.

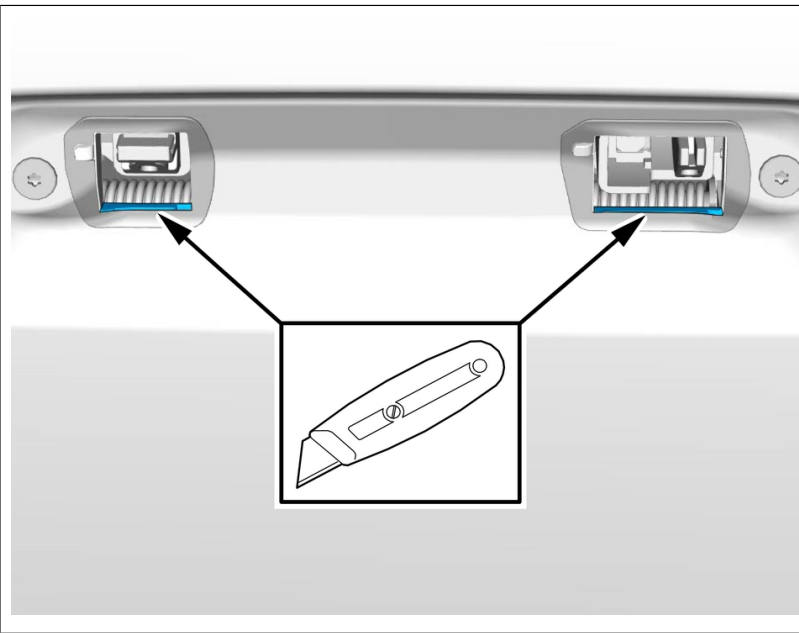
Use: Screwdriver



Lock the vehicle.



Note! Orientation view



Caution! Cut carefully to avoid unintentional damage or personal injury.

Remove the marked parts.

Use: Carpet knife

Installation

To install, reverse the removal procedure.