



INSTRUCTION TO SERVICE

ITS: 61289		March 10, 2025
SECTION:	260-BATTERY COMPARTMENT	
SUBJECT:	Rework – OVHD charge box contactors	
ISSUE:	OVHD charge box contactors failing	
SUMMARY:	Updated OVHD HV charge box contactors to replace the existing GIGAVAC ones with new RINCON contactors. The main advantages are: <ol style="list-style-type: none"> 1. 1000V rating vs. 800V 2. Bi-directional power switching instead on one direction 	

ITS61289

Ref. NHTSA Recall No.	Ref. Transport Canada Recall No.
Not Applicable	Not Applicable

THIS ITS DOCUMENT SHOULD BE RETAINED AND REFERRED TO FOR FUTURE MAINTENANCE UNTIL THE NEW FLYER PARTS AND/OR SERVICE MANUAL IS UPDATED TO REFLECT WORK DONE AS A RESULT OF THIS DOCUMENT. ENSURE THAT THIS DOCUMENT IS AVAILABLE FOR PARTS AND MAINTENANCE STAFF GOING FORWARD.



Contents

INSTRUCTION TO SERVICE	1
1. SAFETY PROCEDURE	3
Rework Instructions:	4



NEW FLYER

⚠ WARNING:

Only trained personnel shall supervise and perform High Voltage system testing, checkout and troubleshooting. Two personnel (one called the Checker & the other called Monitor/Recorder) shall perform Checkout Procedures, together, to ensure safety of themselves, others nearby & for the protection of vehicle & property. Refresher training shall be provided to these personnel on a regular basis and when new systems are to be checked by them. The training of the personnel shall consist of:

- This rework is to be performed only by personnel who have successfully completed the new flyer high voltage safety training and with the necessary personal protective equipment.
- High voltage safety guidelines & procedures P/N 532295 must be followed when completing installation.

1. SAFETY PROCEDURE

- 1.1. Turn the master run switch to the off position and wait 5 minutes before proceeding.
- 1.2. Turn the 12/24V battery disconnect and HV Interlock switch to the "OFF" position.
- 1.3. Lock and tag the electrical system of the bus out and retain the key. See Figure 1.
- 1.4. Install a Lockout/Tagout Steering wheel cover as require.

☞ NOTE: Refer to the Lockout/Tagout Procedure in section 1 of your Preventive Maintenance Manual or section 9 of your Service manual for additional information.

☞ NOTE: Use commercially available lock out equipment and tags being sure to follow any local laws or workplace procedures.

☞ NOTE: Refer to New Flyer High Voltage Safety Guidelines and Procedures Document 532295 when completing installation or service work on high voltage power cables.

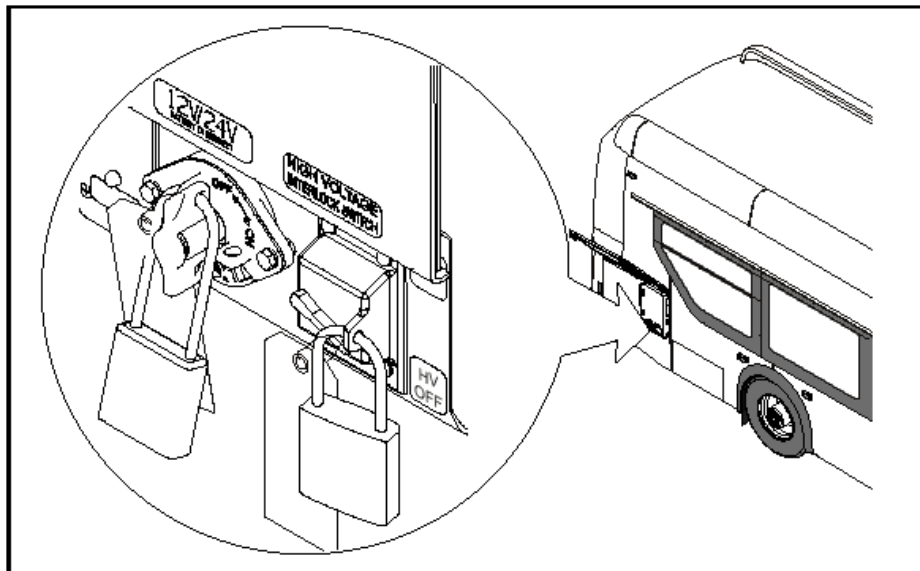


Figure 1: Lockout tagout location reference



NEW FLYER

2. Rework Instructions:

2.1. Locate and gain access the HV DC contactor box on the curbside roof as shown. See Figure 1.

☞ **NOTE: Use fall protection and PPE.**

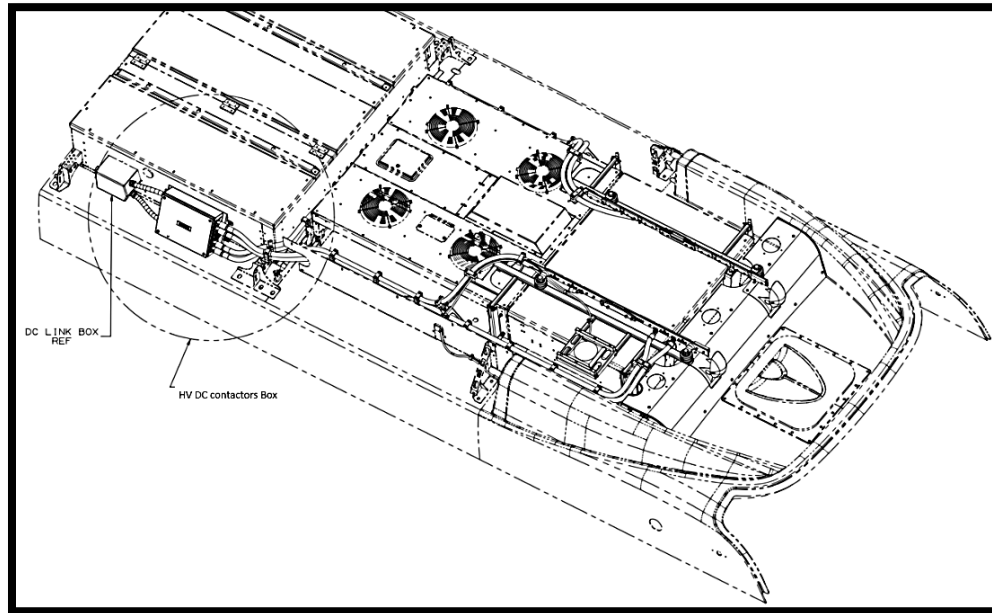


Figure 1 - Rework location reference.

2.2. Remove the lid mounting hardware on the HV DC contactor box and set aside. See Figure 2.

2.3. Ensure no voltage is present before proceeding.

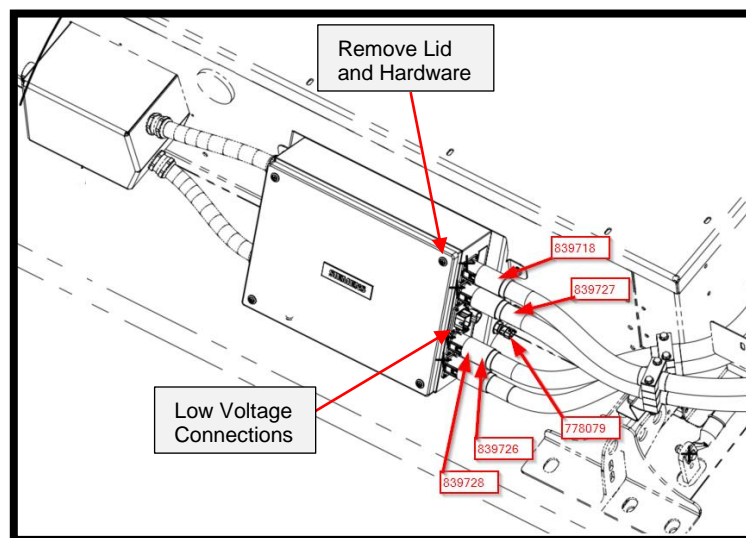


Figure 2 - POS and NEG HV cable connection location reference.

2.4. There will be two configurations for box 772719 as per Figure 3. We will be focusing on the latest revision since the instructions are similar.

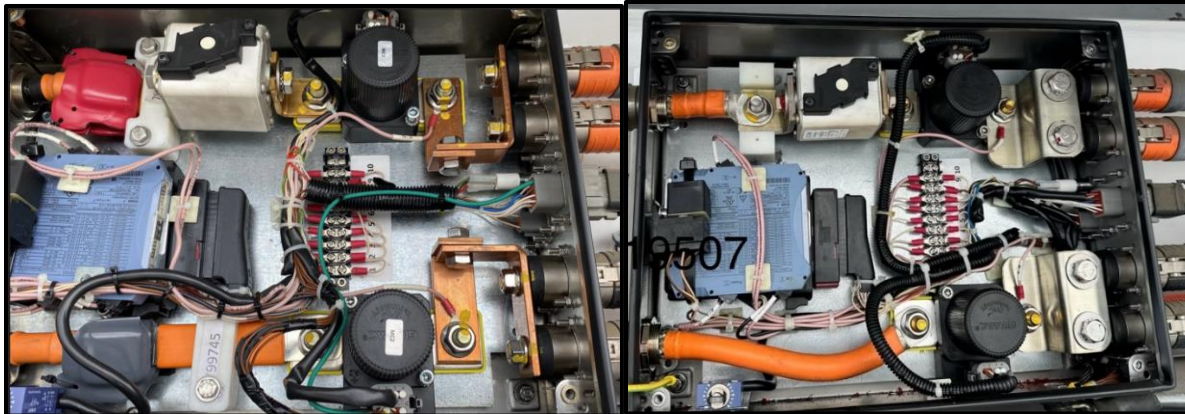


Figure 3 - Box 772719 rev A vs rev C

- 2.5. Access the OVHD charge box and remove the two contactors LV connectors.
- 2.6. Disconnect each contactor from the HV connections by opening the two M12 nuts on each side of the contactors and retain hardware (see figure 4).
- 2.7. Remove each contactor by opening the two M6 mounting screws and retain hardware (see figure 4).

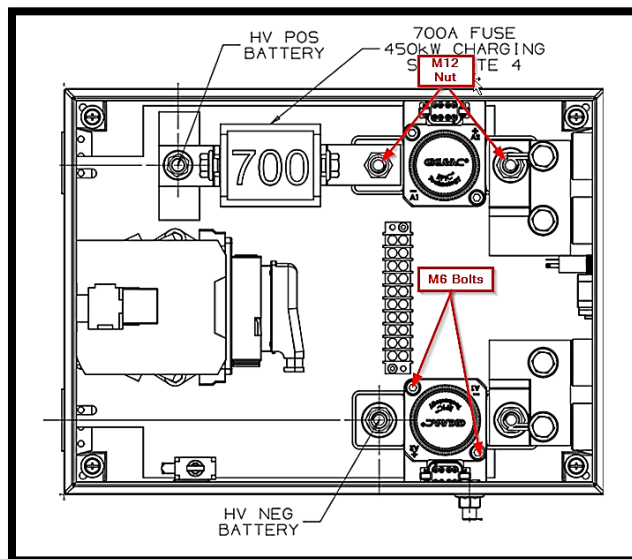


Figure 4 - Contactors Mounting screws



NEW FLYER

- 2.8. Install the new supplied contactors P/N-1117873.
- 2.9. Secure each contactor using two M6 mounting bolts that were removed in line 2.7. Torque bolts to 44-70 IN-LBS (refer to figure 5).
- 2.10. Reconnect each contactor to its corresponding HV connections using the M12 Nuts removed in line 2.6. Torque bolts to 25-150 IN-LBS (see figure 5).
- 2.11. Reconnect each contactor to its corresponding LV connector.
- 2.12. Secure wires using a tie bases as needed.

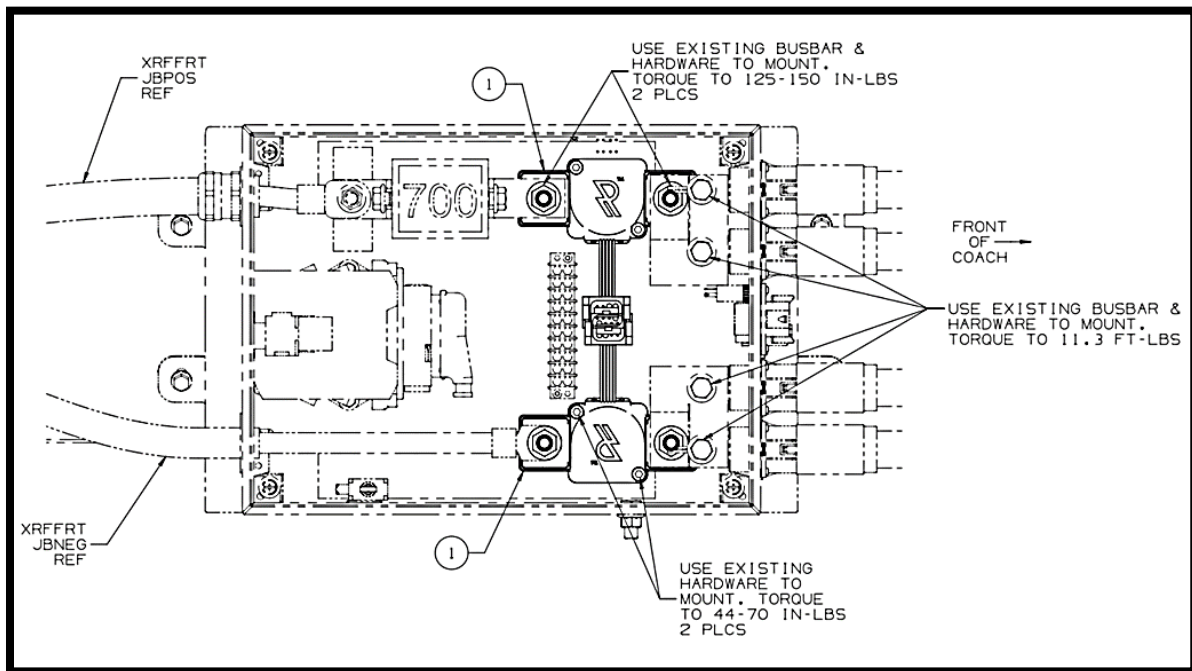


Figure 5 - New contactor installation



LABOUR ESTIMATE				
	Operation	Number of Technician(s)	Hours	Labor Time T X HR
1	Rework – OVHD Charge Box HV Contactors	2	2	4

PARTS REQUIRED					
Item	Part Number	Description	Qty. per Coach	Units	Notes
1	1117873	ASSY-CONTACTOR RINCON 600A	2	EA	
2					
3					
4					
5					
6					
7					
8					
9					
10					
11					
12					