



QUALITY BULLETIN

Can-Am On-Road

MARCH 5, 2025

BULLETIN 2024-12 | REVISION A

CAMPAIGN N

°2021-0012 / 2022-0025 / 2023-0014 / 2024-0012

NOTE

Repair only if described symptoms exist or are noticed.

Ryker Vehicle Stability System (VSS) Issues

MODEL YEAR	MODEL	ENGINE
MY21 MY22 MY23 MY24	Ryker	600 ACE and 900 ACE

IMPORTANT

When receiving a vehicle for service:

- Always lookup the vehicle identification number (VIN) on the Knowledge Center to ensure all required recalls are performed.
- Always connect the vehicle to the BRP diagnostic software (BUDS) to ensure all required updates are performed.

PROBLEM

Variation in the front wheel alignment process on the production line can have an influence on the Vehicle Stability System (VSS) activation.

VERIFYING VEHICLE MILAGE

Verify the vehicle mileage to confirm it's eligibility.

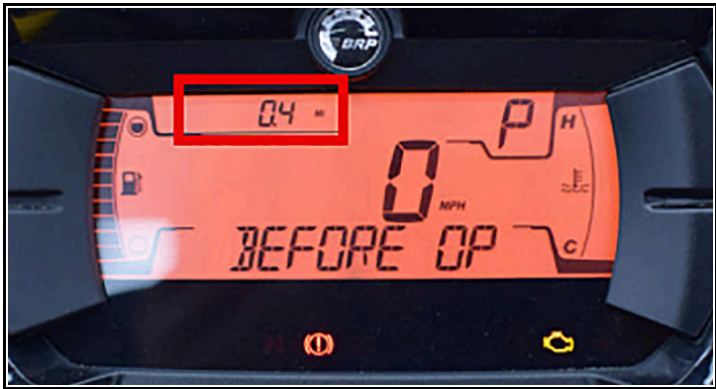
NOTE

A picture of the odometer reading will be required for claiming procedure.

MODEL	MILEAGE	ELIGIBILITY
Ryker	Less than 6214 miles (10000 km)	Yes

If the mileage is *below* the threshold and the vehicle has a VSS fault code issue, proceed with *Solution*.

If the mileage is *above or equal* the threshold and the vehicle has a VSS fault code issue, coverage will be determined by applicable warranty rules.



SOLUTION

Replace the steering thrust bearings to reduce the play in the steering system and perform a wheel alignment to factory specification.

Only replacing the steering thrust bearings may not cure all symptoms.

REQUIRED PARTS

Order the parts through the regular channel.

DESCRIPTION	PART NUMBER	QTY
Steering Update Kit	219800513	1
Hex. Flanged Elastic M6 Nut	233261414	2
Hex. Flanged Elastic M10 Nut	233261416	2

The Steering Update kit includes the following components.

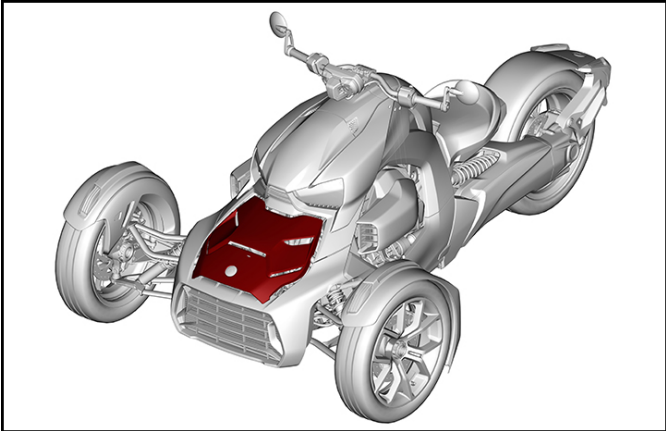
DESCRIPTION	PART NUMBER	QTY
1.2 mm Spacer	219800512	1
5.25 mm Spacer	219800511	1
Bearing	709402450	2
Wave washer	219800510	1
Sensor sleeve	709401527	1

NOTE

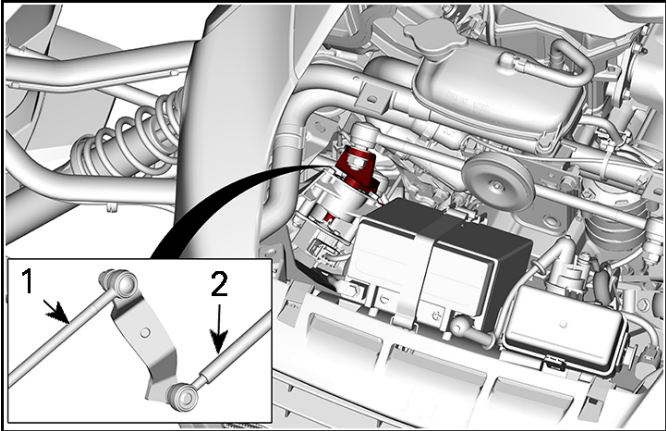
The 1.2 mm spacer is not required on MY22 and up vehicles.

CORRECTIVE ACTION

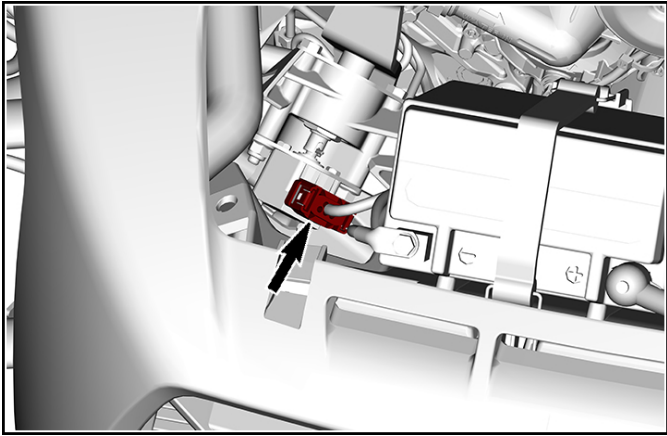
1. Remove the service cover.



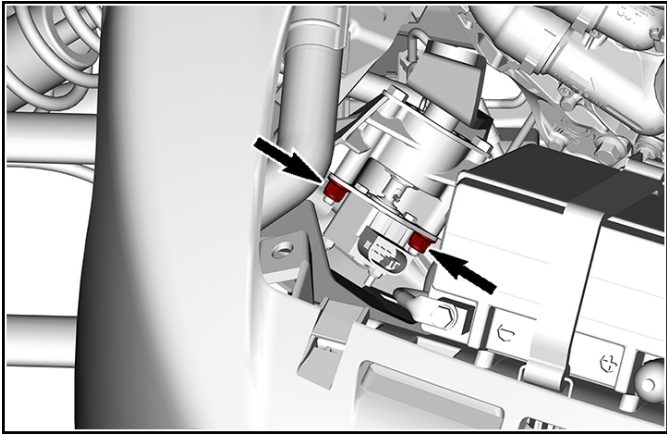
2. Remove the tie-rod end and the intermediate rod end from the pitman arm. Discard nuts.



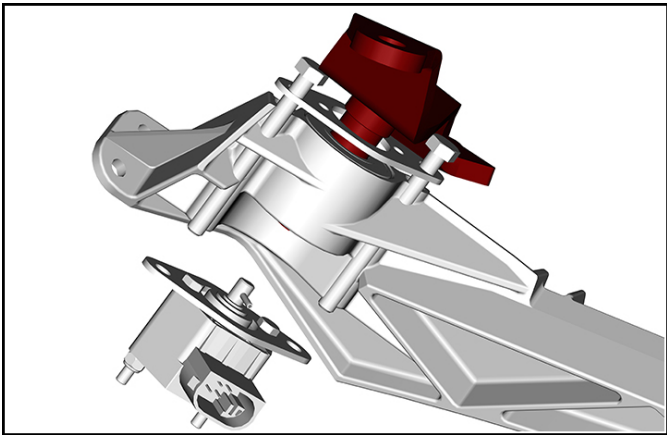
1. Intermediate rod
2. RH Tie-rod
3. Disconnect the SAS.



4. Remove and discard the retaining nuts.



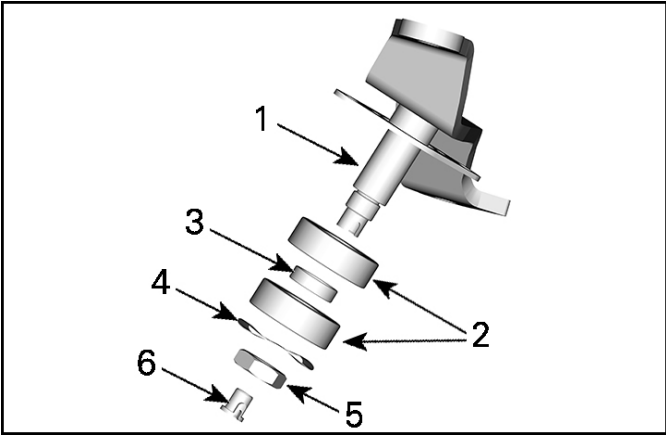
5. Remove the pitman arm and the SAS.



- 6. Remove the nut and discard the bearings, the spacers, the washer and the sensor sleeve.
- 7. Install the new bearings, the spacer(s) and the sensor sleeve.

NOTE

On MY21 models ONLY, install the 1.2 mm spacer on top of the upper bearing.

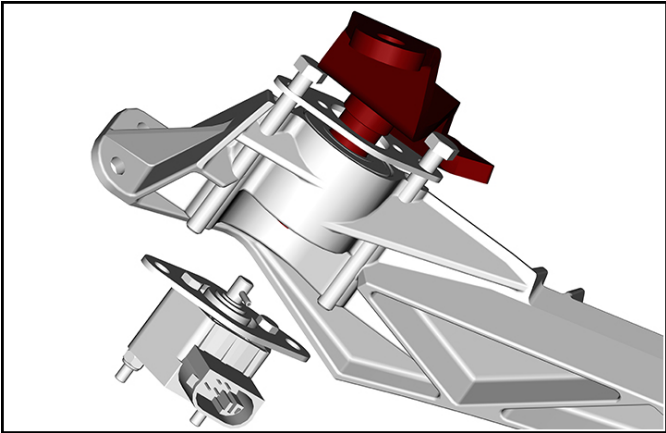


- 1. Pitman arm
- 2. Bearing
- 3. 5.2 mm Spacer
- 4. Wave washer
- 5. Nut
- 6. Sensor Sleeve

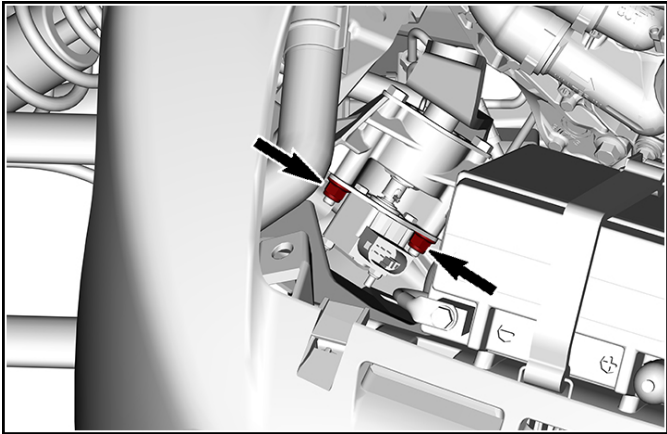
8. Tighten to specification.

TIGHTENING TORQUE	
Pitman arm nut	$13.5 \text{ N}\cdot\text{m} \pm 1.5 \text{ N}\cdot\text{m}$ $(119 \text{ lbf}\cdot\text{in} \pm 13 \text{ lbf}\cdot\text{in})$

9. Install the pitman arm and the SAS.



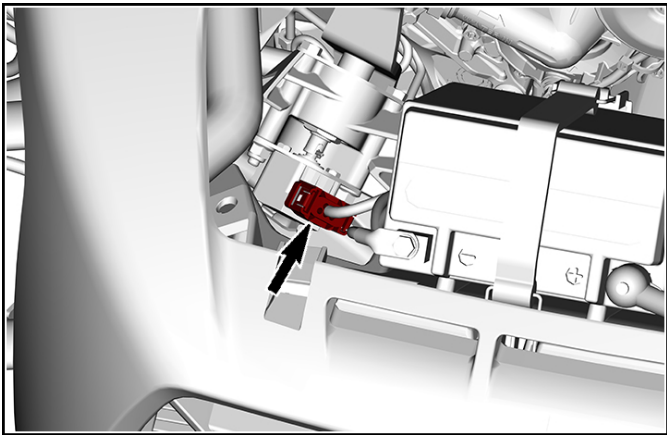
10. Install new retaining nuts.



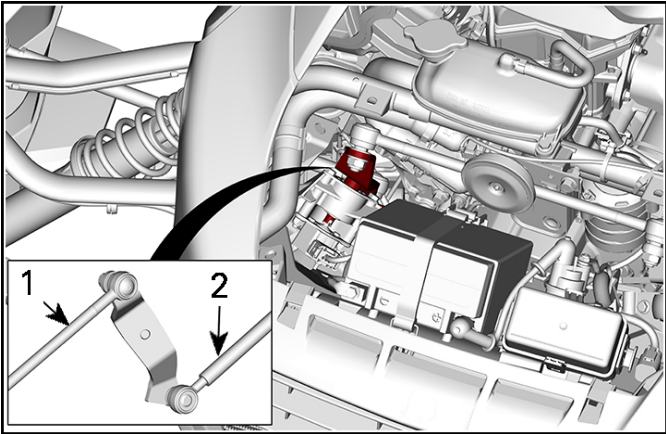
11. Tighten to specification.

TIGHTENING TORQUE	
Pitman arm retaining nuts (M6 Hex. flanged elastic nut)	10 N•m ± 2 N•m (89 lbf•in ± 18 lbf•in)

12. Connect the SAS.



13. Install the tie-rod end and the intermediate rod end on the pitman arm and secure using new nuts.

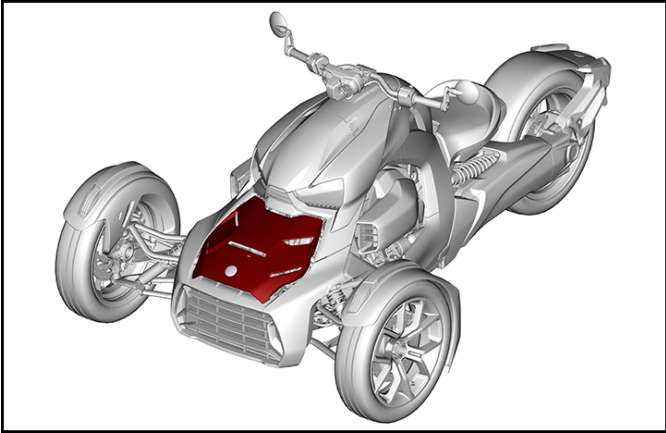


1. Intermediate rod
2. RH Tie-rod

14. Tighten to specification.

TIGHTENING TORQUE	
Tie-rod end nut (M10 Hex. flanged elastic nut)	37 N•m ± 1 N•m (27.3 lbf•ft ± 0.7 lbf•ft)
Intermediate rod end nut (M10 Hex. flanged elastic nut)	37 N•m ± 1 N•m (27.3 lbf•ft ± 0.7 lbf•ft)

15. Install the service cover.



16. Perform a front wheel alignment. Refer to *Wheel Alignment* in the *Steering and Front Wheels* subsection of the appropriate *Vehicle Service Manual*.

NOTE
Ensure that all the steering components are in good condition before performing the alignment.



WARRANTY

Submit a warranty claim using the following information.

For claiming procedure, refer to the online Dealer/Distributor Warranty Guide.

MY2021 Models

With BOSSWeb

CLAIM DETAILS	
Product Line	3WV
Unit Model Year	2021
Campaign/Bulletin/Description	12 / 2024-12 / RYKER VSS ISSUES
<div><div>*Action</div><div>Inspect</div><div>Repair</div><div><input type="checkbox"/></div><div><input checked="" type="checkbox"/></div></div>	
Total Labor Time Paid	1.8 hour
Expiration Date	April 30, 2027

With Warranty On Demand

CLAIM DETAILS	
Claim Type	Unit Campaign
Serial Number	Enter Serial Number
Warranty Campaign	Select 2021 RYKER VSS ISSUES / BULLETIN 2024-12 / 3WV-2021-0012 from the drop-down list
Date of Repair	Repair date
Total Labor Time Paid	1.8 hour
Expiration Date	April 30, 2027

MY2022 Models

With BOSSWeb

CLAIM DETAILS	
Product Line	3WV
Unit Model Year	2022
Campaign/Bulletin/Description	25 / 2024-12 / RYKER VSS ISSUES
<div><div>*Action</div><div>Inspect</div><div>Repair</div><div><input type="checkbox"/></div><div><input checked="" type="checkbox"/></div></div>	
Total Labor Time Paid	1.8 hour
Expiration Date	April 30, 2027

With Warranty On Demand

CLAIM DETAILS	
Claim Type	Unit Campaign
Serial Number	Enter Serial Number
Warranty Campaign	Select 2022 RYKER VSS ISSUES / BULLETIN 2024-12 / 3WV-2022-0025 from the drop-down list
Date of Repair	Repair date
Total Labor Time Paid	1.8 hour
Expiration Date	April 30, 2027

MY2023 Models

With BOSSWeb

CLAIM DETAILS	
Product Line	3WV
Unit Model Year	2023
Campaign/Bulletin/Description	14 / 2024-12 / RYKER VSS ISSUES



CLAIM DETAILS	
<div><div><div>*Action</div><div>Inspect</div><div>Repair</div><div><input type="checkbox"/></div><div><input checked="" type="checkbox"/></div></div></div>	
Total Labor Time Paid	1.8 hour
Expiration Date	April 30, 2027

With Warranty On Demand

CLAIM DETAILS	
Claim Type	Unit Campaign
Serial Number	Enter Serial Number
Warranty Campaign	Select 2023 RYKER VSS ISSUES / BULLETIN 2024-12 / 3WV-2023-0014 from the drop-down list
Date of Repair	Repair date
Total Labor Time Paid	1.8 hour
Expiration Date	April 30, 2027

MY2024 Models

With BOSSWeb

CLAIM DETAILS	
Product Line	3WV
Unit Model Year	2024
Campaign/Bulletin/Description	12 / 2024-12 / RYKER VSS ISSUES

*Action

Inspect

Repair

☐

☒

CLAIM DETAILS	
Total Labor Time Paid	1.8 hour
Expiration Date	April 30, 2027

With Warranty On Demand

CLAIM DETAILS	
Claim Type	Unit Campaign
Serial Number	Enter Serial Number
Warranty Campaign	Select 2024 RYKER VSS ISSUES / BULLETIN 2024-12 / 3WV-2024-0012 from the drop-down list
Date of Repair	Repair date
Total Labor Time Paid	1.8 hour
Expiration Date	April 30, 2027