

# Checking method on tightening torque

DATE: MARCH 4 2025

This Technical bulletin serves as a guide and provides info with the aim of providing indications about the proper way to perform a tightening torque check, in the case it is needed or requested. In order to allow a proper and effective analysis of the defective route cause.

**MODELS:** All Models

1. Mark initial position of the head of the screw / fastening / nut as in the picture below:

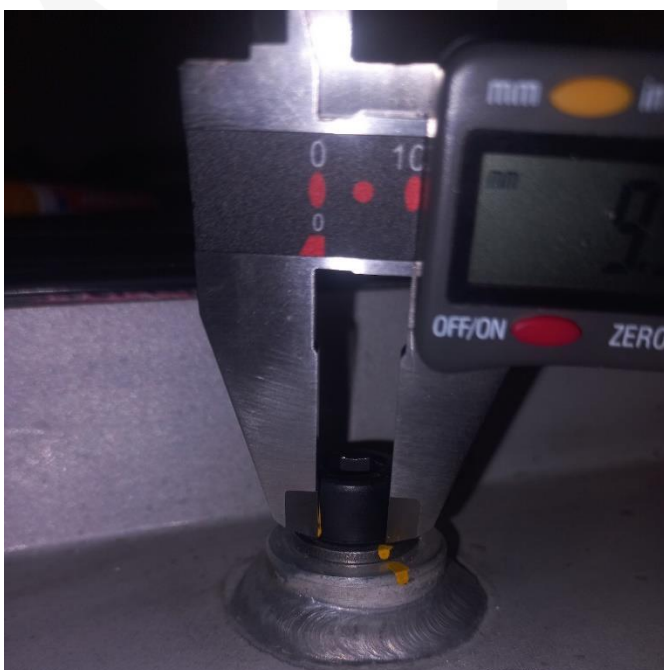


NOTE 1: Please report pictures that clearly show the marking point on the screw / fastening / nut.

2. Use only a calibrated torque wrench and set torque value according to the nominal tightening torque of the fastening (refer to Technical Documentation for the correct value).

WARNING: do not exceed the nominal torque value during the check.

3. If a screw head rotation\displacement occurred, report and measure the displacement (if present) of the screw / fastening / nut once the nominal tightening torque has been reached. The report of the displacement has to be reported by using a caliper, for a final measure in mm; refer to the picture below:



NOTE 2: It is very important not to handle the screw / fastening / nut before having perform the step above.

NOTE 3: In case the screw / fastening / nut carried out a complete turn or more, notify the total displacement value (e.g. 1 turn + 5mm).

Report through Blue on Line such information for an effective analysis of the defective route cause.

In accordance with the Warranty policies detailed in the White Book, we remind you that all interventions for which the incorrect application of a technical procedure or negligence should be detected, could not be authorized under contractual warranty.

Please do not hesitate to contact us for any questions you may have.

Kind regards,