

March 7, 2025

Version 1

Product Update: 2024 ZDX Multi-View Display Reversed

AFFECTED VEHICLES

Year	Model	Trim Level	VIN Range
2024	ZDX	Type-S	ALL

BACKGROUND

During manufacturing, wires may have been misrouted in the multi-view camera wire harness causing the left and right images to be swapped when the vehicle is in reverse.

CLIENT NOTIFICATION

Owners of affected vehicles will be sent a notification of this campaign. Do an iN VIN status inquiry to make sure the vehicle is shown as eligible. Some vehicles affected by this campaign may be in your new or used vehicle inventory.

Failure to repair a vehicle subject to a recall or campaign may subject your dealership to claims or lawsuits from the client or anyone else harmed as a result of such failure. Before selling a vehicle in inventory, always check if it is affected by a safety recall by conducting a VIN status inquiry.

CORRECTIVE ACTION

Reverse the wiring for the outside rearview mirror cameras.

WARRANTY CLAIM INFORMATION

Operation Number	Description	Flat Rate Time	Defect Code	Symptom Code	Template ID	Failed Part Number
0555A0	Inspect rearview camera function	0.3 hr	6MZ00	GL800	B25016A	86583111
0550A0	Reverse the wiring for the outside rearview mirror cameras (includes inspection).	0.9 hr	6MZ00	GL800	B25016B	86583111

PARTS INFORMATION

NONE

REQUIRED MATERIALS

NONE

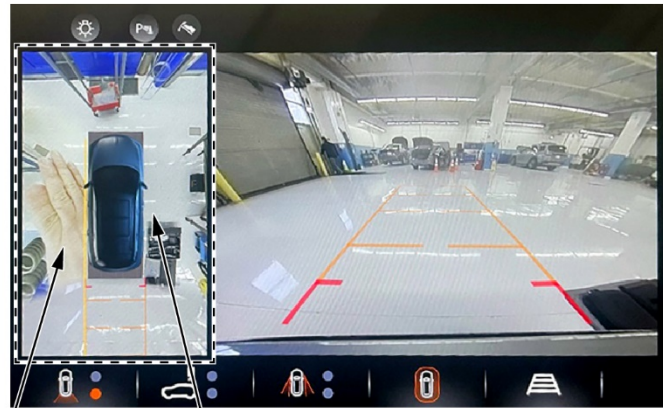
CLIENT INFORMATION: The information in this bulletin is intended for use only by skilled technicians who have the proper tools, equipment, and training to correctly and safely maintain your vehicle. These procedures should not be attempted by "do-it-yourselfers," and you should not assume this bulletin applies to your vehicle, or that your vehicle has the condition described. To determine whether this information applies, contact an authorized Acura automobile dealer.

TOOL INFORMATION

Tool Name	Tool Number	Quantity
Accessory Lighter Output Probe	POWTST12V or commercially available	1

INSPECTION PROCEDURE

1. Turn the vehicle to the ON mode.
2. While holding the brake, place the vehicle in REVERSE.
3. Hold your left hand under the driver's side sideview mirror, then verify that it appears on the left side of the Surround Vision multi-view display.



Hand should appear here.

If hand is appearing here, complete the repair procedure.

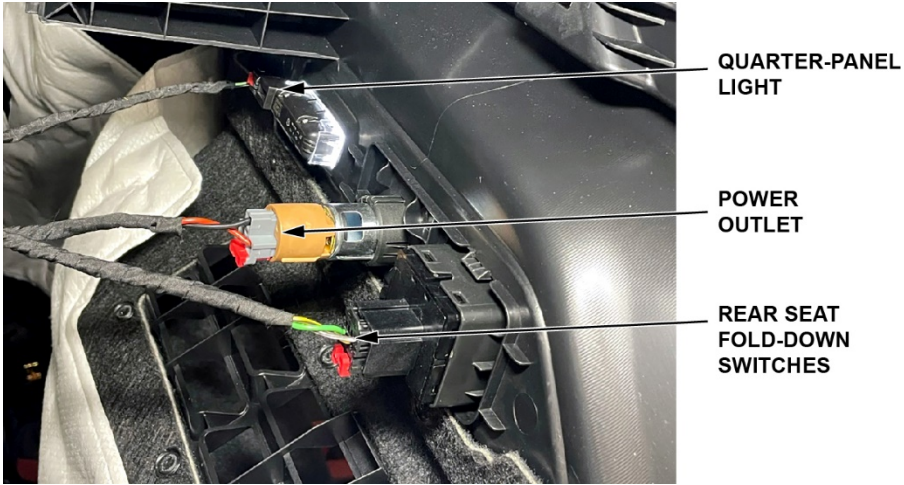
Does your hand appear on the left side of the vehicle image on the Surround Vision multi-view display?

Yes –The vehicle is operating as designed; no further action is required.

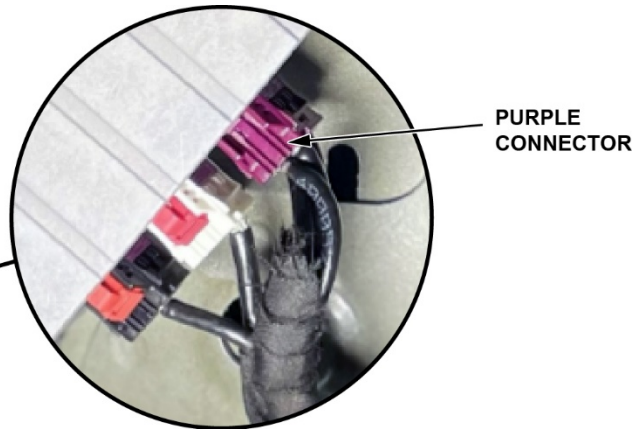
No – Proceed to the REPAIR PROCEDURE.

REPAIR PROCEDURE

1. Remove the left side quarter lower rear trim panel to allow access to the surround display camera wiring.
 - Do the Removal Procedure (Steps 1-16) of [Quarter Lower Rear Trim Panel Replacement – Left Side](#).
2. Disconnect the wiring to the rear seat fold down switches, power outlet, and quarter panel light, then move the trim panel to allow access.



3. Locate the purple 4-way coax connector connected to the APC3 module.
4. Disconnect the purple connector from the module.

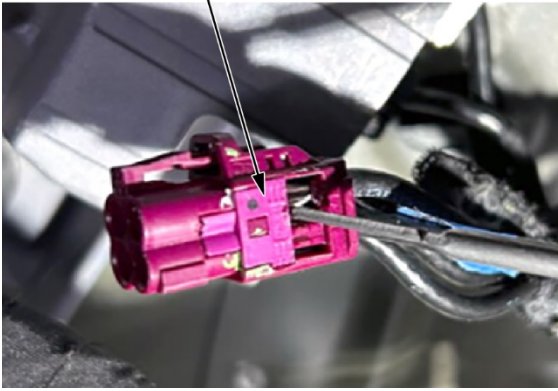


5. Once removed, peel back the tape from the connector to expose the wiring to allow access to the terminals.

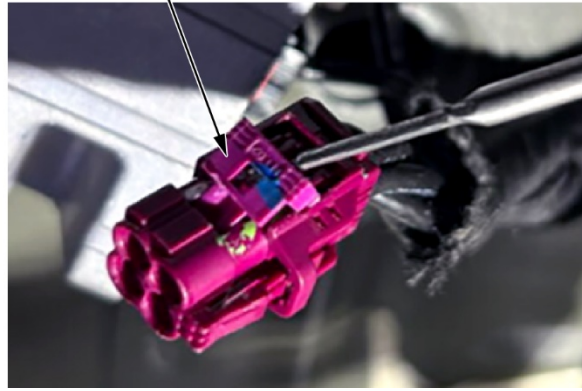


6. Use a small pick tool to gently pry up and remove the connector locks from each side of the connector.

CONNECTOR LOCK



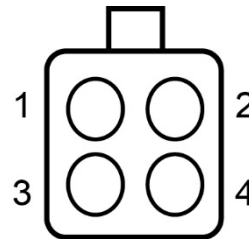
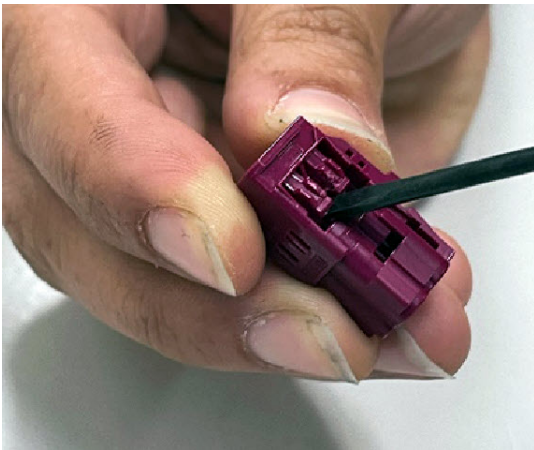
CONNECTOR LOCK



7. Remove the #3 lower terminal by gently lifting the terminal locking tab, then pull the terminal out.

NOTICE

- Only very slight lifting of the locking tab is necessary.
- **Do not** apply too much force or movement or it will break the connector.
- **Do not** remove terminals 1 and 2.



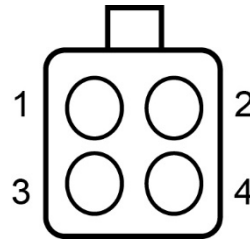
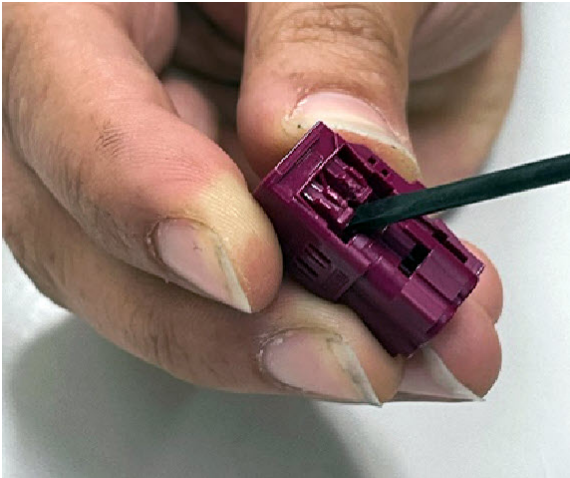
8. With the #3 terminal removed, mark the wire with tape.



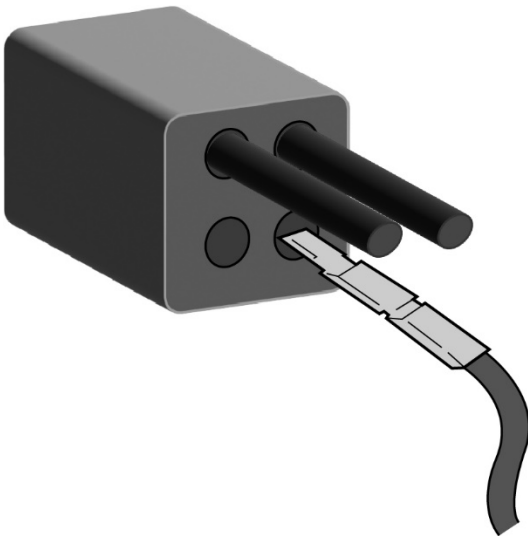
9. Remove the #4 lower terminal by gently lifting the terminal locking tab, then pulling the terminal out.

NOTICE

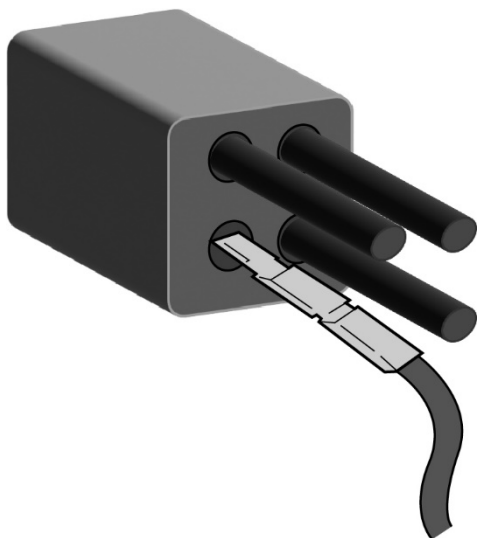
- Only very slight lifting of the locking tab is necessary.
- **Do not** apply too much force or movement or it will break the connector.
- **Do not** remove terminals 1 and 2.



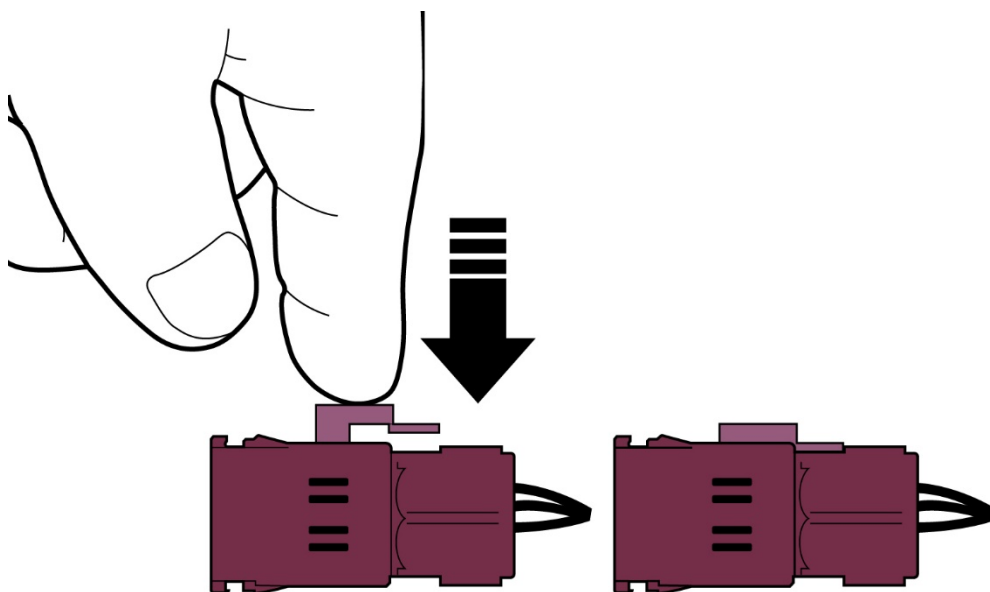
10. Insert the #4 terminal into the #3 connector slot and push in until it clicks. Lightly pull on the wire to confirm the terminal is locked into the connector.



11. Insert the #3 terminal (marked with tape) into the #4 connector slot and push in until it clicks. Lightly pull on the wire to confirm the terminal is locked into the connector.



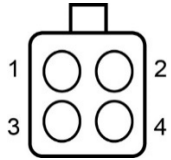
12. Reinstall the connector locks onto each side of the connector.



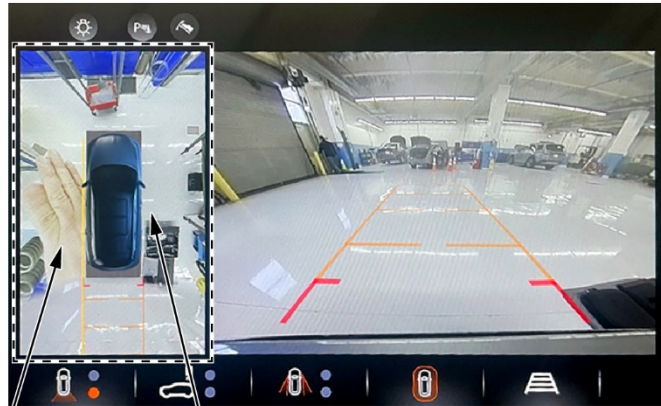
13. Remove the marker tape from the wiring.
14. Rewrap the wiring harness with the tape that was peeled back in step 5.
15. Reinsert the connector into the ACP3 module until fully seated.



16. Turn the vehicle to the ON mode.
17. While holding the brake, place the vehicle in REVERSE.
18. Check the Surround Vision images on the multi-view display:
 1. Confirm that the front and rear camera images are displaying correctly on the in-car multi-view display.
NOTE: If the front and rear images on the multi-view display are reversed, this means the top wires in the connector were reversed during the repair. Remove the connector and reverse terminals 1 and 2.



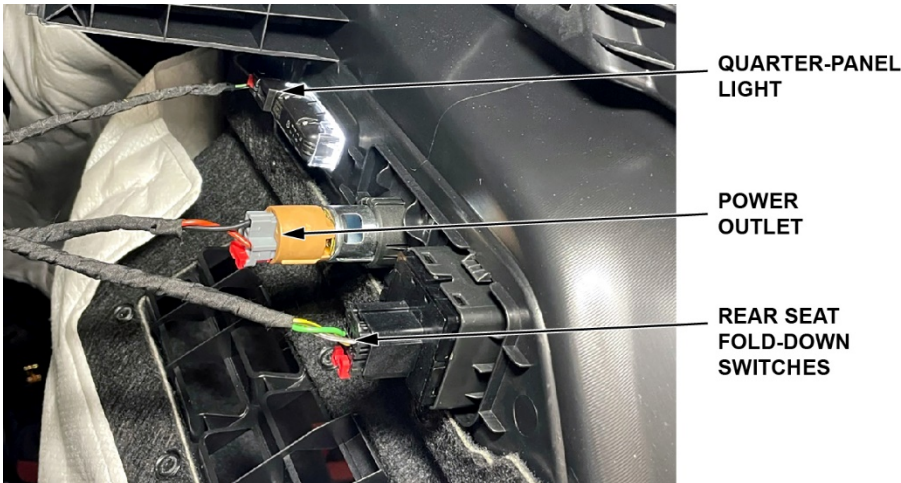
2. Hold your left hand under the driver's side sideview mirror, then confirm that it appears on the left side of the in-car multi-view display. This confirms the connector wiring is correct.



Hand should appear here.

If hand is appearing here, complete the repair procedure.

19. Connect the wiring connectors back into the quarter lower rear trim panel.



20. Verify the following are working correctly:
 - The quarter panel light turns on when the driver's door is opened.
 - Use the 12V APO Power Probe Tester to confirm the auxiliary power outlet has power.
 - The rear seatback release buttons are working properly.
21. Install the left side quarter lower rear trim panel.
 - Do the Installation Procedure (Steps 1-13) of [Quarter Lower Rear Trim Panel Replacement – Left Side](#).