



RYKER 2022 DESS System To Activate - 141478

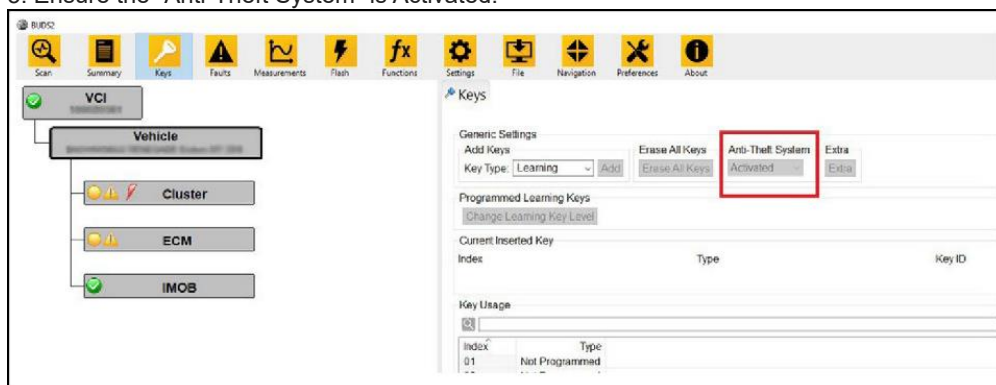
Article Detail

Problem:

Rykers MY22 produced after June 20th of 2022 are equipped with DESS components but the DESS has not been activated.

Solution:

1. Always make sure you have the latest BUDS2 version installed.
2. If required, install the RF D.E.S.S. Post and / or RF D.E.S.S. Key on the vehicle. Refer to *DIGITALLY ENCODED SECURITY SYSTEM (D.E.S.S.)* subsection in the appropriate **online VEHICLE SERVICE MANUAL**.
3. Connect the vehicle to BUDS2.
4. Select the "Keys" tab.
5. Ensure the "Anti-Theft System" is Activated.



6. Program the NORMAL keys.

Warranty:

Part of PDI

First Published By: Eric Fauteux on 06/16/2023

Last Modified By: Eric Fauteux on 06/27/2023