

Rear Side Window Reversed When Opening or Closing Soft Top - Convenience Closing

Topic number	LI67.30-P-076917
Version	2
Function group	67.30 - Side windows
Date	3/10/25
Validity	238.4
Reason for change	Remedy added

Complaint

Rear side window reversed when opening/closing soft top - Convenience closing

Cause

1. Rear side window setting
2. Damage to inner rear side window sealing rail (abrasion marks at sealing rail, see picture, folding of the sealing lip, see picture 2)
3. Body-in-white side wall shaft width too low. To this end, check the shaft width of the side wall for dimensional accuracy; see picture 3

Note: Inner and outer sealing rail are removed

4. Window divider at rear side window, metal insert sticks out, see picture 5

Attachments	
File	Description
Bild1.jpg	Inner sealing rail abrasion marks



Bild2.jpg

Folding of the inner sealing rail sealing lip

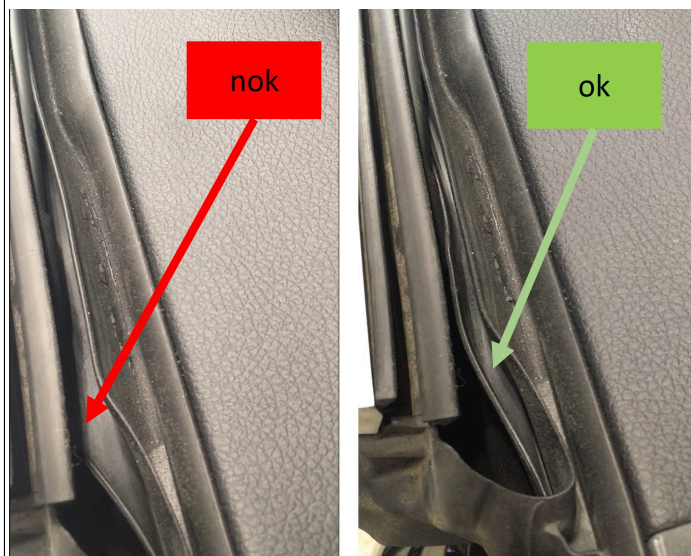
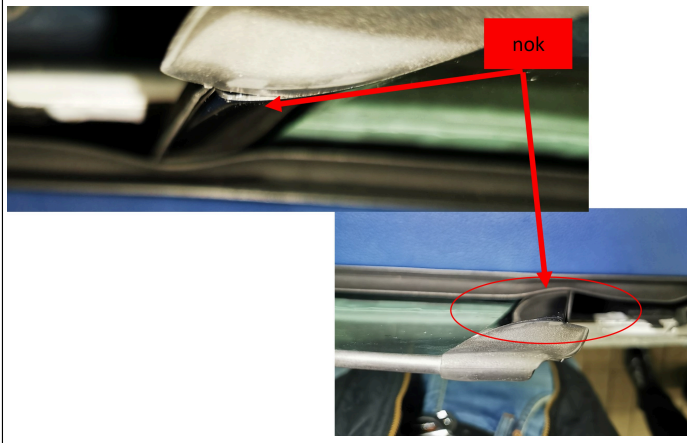


Bild3.jpg

Measuring points 1, 2, 3



Bild5.jpg



Window divider at rear side window, metal insert sticks out

Remedy

- SCN coding N22/6 (CRCM238)

If SCN coding does not remedy the issue, consider the following points

1. Adjust the rear side window according to the specifications in the WIS.

Note: Rear side window/center setting to shaft center of body-in-white side wall

2. Check inner sealing rail for damage. Replace in the event of damage
3. Enlarge shaft width of side wall of body-in-white; see picture 4.

Information:

Measuring point 1 at 0 cm: Nominal dimension 37.7 mm

Measuring point 2 at 22 cm: Nominal dimension 31.0 mm

Measuring point 3 at 34 cm: Nominal dimension 33.5 mm

4. Replace rear side window

Attachments

XENTRY Tips

File	Description
Bild4.jpg 	Enlarge shaft width of side wall of body-in-white

WIS-References		
Document number	Title	Note
AR67.30-P-4201LWR	Adjust rear side window	

Disclaimer

NOTE: The information contained in this document is intended for use by trained, professional technicians with the knowledge to properly and safely perform diagnosis and repairs on Mercedes-Benz vehicles, using Mercedes-Benz approved tools and equipment. It informs service technicians about conditions that could occur in certain vehicles and provides information that could assist in proper vehicle diagnosis, service, or repair. It does not indicate that a defect is present in any vehicle referenced in this document nor does it imply warranty coverage. DO NOT assume that a symptom or condition, or a described cause of a symptom or condition, affects any particular vehicle or groups of vehicles, or that a described repair applies to any particular vehicle or groups of vehicles. There can be multiple causes resulting in the same or similar symptoms or conditions described in this document, and trained professional service technicians must use their diagnostic skills to make evaluations on a case-by-case basis. The information contained in this document does not guarantee warranty coverage nor does it extend the vehicle's warranty in any way.

Symptoms
Body > Glazing > Window lifting mechanism/window operation > Does not run up
Body > Glazing > Window lifting mechanism/window operation > Stiff/sluggish

Parts						
Part number	ES1	ES2	Designation	Quantity	Note	EPC
A2386704700			LEFT REAR SIDE WINDOW PANE	1		X
A2386704800			RIGHT REAR SIDE WINDOW PANE	1		X
A2386730700			INNER LEFT SEALING RAIL	1		X
A2386730800			INNER RIGHT SEALING RAIL	1		X

Operation numbers/damage codes

XENTRY Tips

Op. no.	Operation text	Time	Damage code	Note
			67A0251	
			67N0251	