

# Technical Service Bulletin

<b>Topic</b>	Lower and/or upper front suspension lever brushes- Warranty replacement guidelines
<b>Market area</b>	Bentley: worldwide (2WBE),China 796 VW Import Comp. Ltd (Vico), Beijing (6796)
<b>Brand</b>	Bentley
<b>Transaction No.</b>	2075041/2
<b>Level</b>	EH
<b>Status</b>	Released for publishing
<b>Release date</b>	Feb 21, 2025

## New customer code

Object of complaint	Complaint type	Position
chassis -> damping\suspension regulation -> automatic level control system	functionality -> no function	
vehicle service -> inspection, maintenance -> main inquiry	service: process -> with complaint confirmation	
vehicle service -> inspection, maintenance -> performing a service	service: process -> with complaint confirmation	
vehicle service -> vehicle diagnosis	service: process	
chassis -> damping\suspension regulation	functionality	
chassis -> level control system, pitch and roll compensation	noises, vibrations	

## Vehicle data

### Bentayga Series

#### Sales types

Type	MY	Brand	Designation	Engine code	Gearbox code	Final drive code
4V1*	2017	E		*	*	*
4V1*	2018	E		*	*	*
4V1*	2019	E		*	*	*
4V1*	2020	E		*	*	*
4V1*	2021	E		*	*	*
4V1*	2022	E		*	*	*
4V1*	2023	E		*	*	*
4V1*	2024	E		*	*	*
4V1*	2025	E		*	*	*
ZV1*	2023	E		*	*	*
ZV1*	2024	E		*	*	*
ZV1*	2025	E		*	*	*

## Documents

Document name
<a href="#">master.xml</a>

---

**Condition**

The left or right hand front lower and/or upper lever bushes (Figure 1) are exhibiting minor cracks (on inspection)

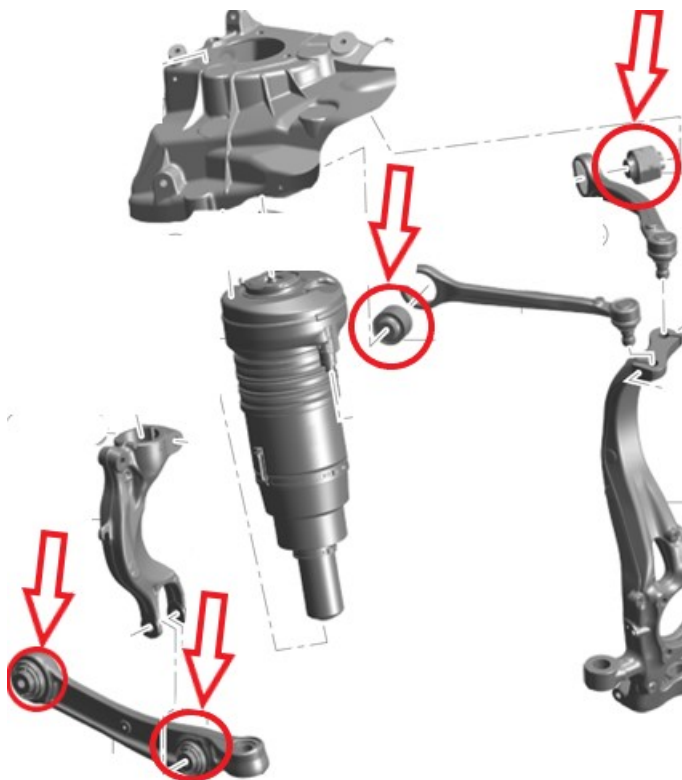


Figure 1

**CAUTION**

Before proceeding with replacing any of the lower and/or upper lever bushes shown in Figure 1 the operative must refer to the Technical background section of this TPI

**Technical Background**

**NOTICE**

Should the bushes be in the condition shown in Figure 2 and 3 replacement is not required unless a customer complaint has been received relating to suspension noise - bush wear or overall serviceable condition



Figure 2



Figure 3



Should the bushes be in the condition shown in Figures 4, 5 or 6 - The bushes should be replaced as described within Rep.Gr 40



Figure 4

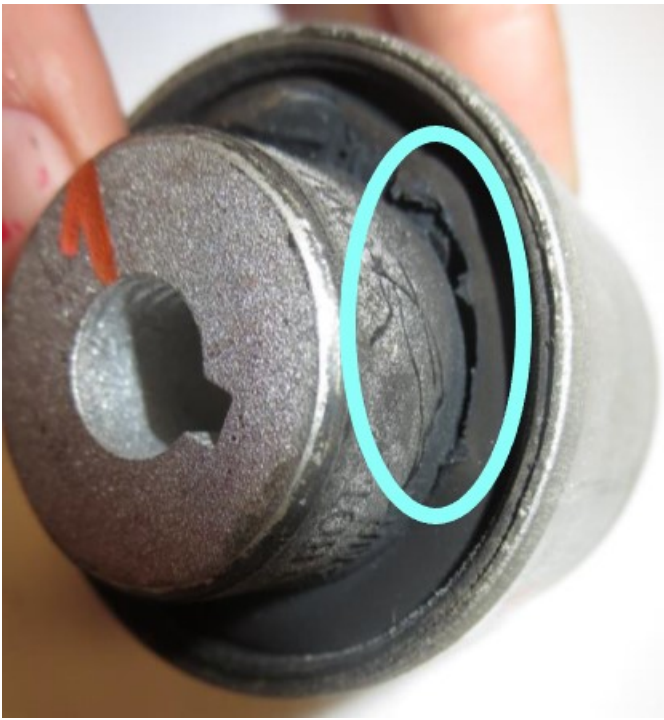


Figure 5



Figure 6



**Please ensure photographs of all bushes (which require replacement) are attached to a non-technical DISS query. The warranty claim could be cancelled if the replacement criteria was not met**

**Or**

**A customer complaint was not received relating to suspension noise - bush wear or overall serviceable condition**

#### **Production Solution**

-

#### **Service**

Refer to the Technical background section of this TPI