



Service Bulletin

Bulletin No.: 24-NA-102

Date: February, 2025

TECHNICAL

Subject: Park Assist Disabled/Non-functional

Brand:	Model:	Model Year:		Build Date:		RPO:	Transmission :
		from	to	from	to		
Chevrolet	Blazer EV	2024	2025			UD7	
	Equinox	2025				UD5/UD7	
	Equinox EV	2024				UD7	
	Traverse	2025				UD7	
GMC	Acadia	2025				UD7	
	Terrain	2025				UD7	

Involved Region or Country	North America
Additional Options (RPOs)	-
Condition	Some customers may comment that whenever they press the Park Assist soft key icon on the infotainment screen, nothing happens.
Cause	The cause of the condition may be due to incorrect software on the vehicle.
Correction	<p>Verify that the Park Assist module has the latest software level. If not, then reprogram the Park Assist Module for the latest software.</p> <p>USB programming will not be required, only SPS programming. This will correctly remove the feature from the display.</p> <p>Warning: DO NOT FLASH Software to a previous level it will cause the module to set DTC U3000.42 which will cause the module to NO LONGER FUNCTION.</p> <p>Once it is verified, go into settings, and enable the Park Assist feature, please reference the visuals below.</p>

Visuals below show what this button icon looks like and where to find it on the Infotainment screen:



6665123

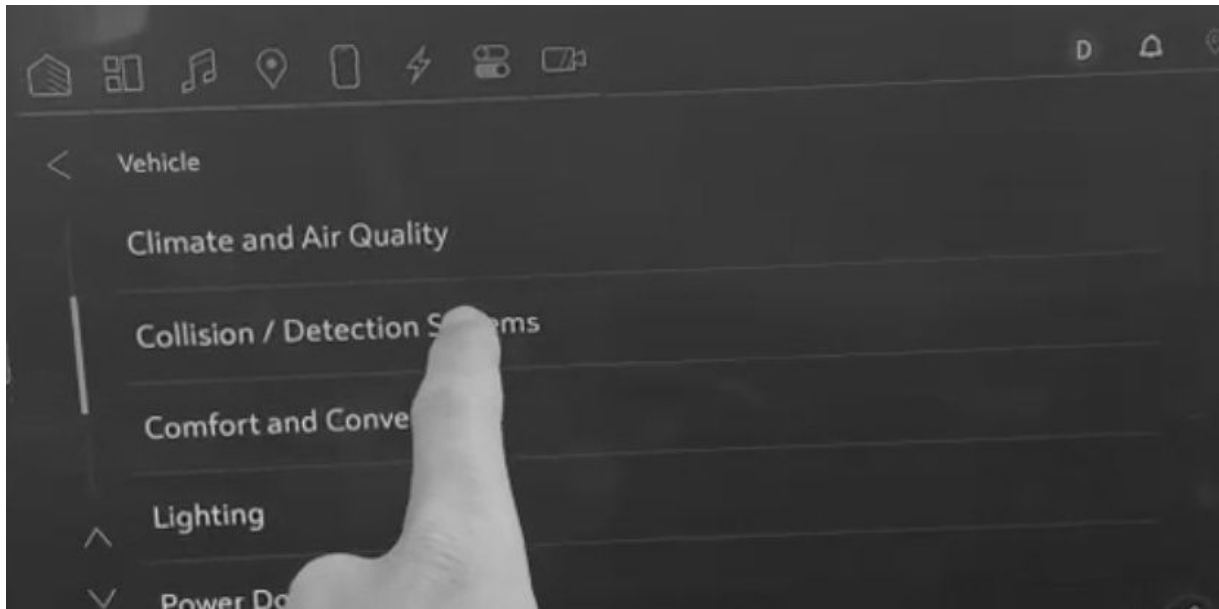


6665124

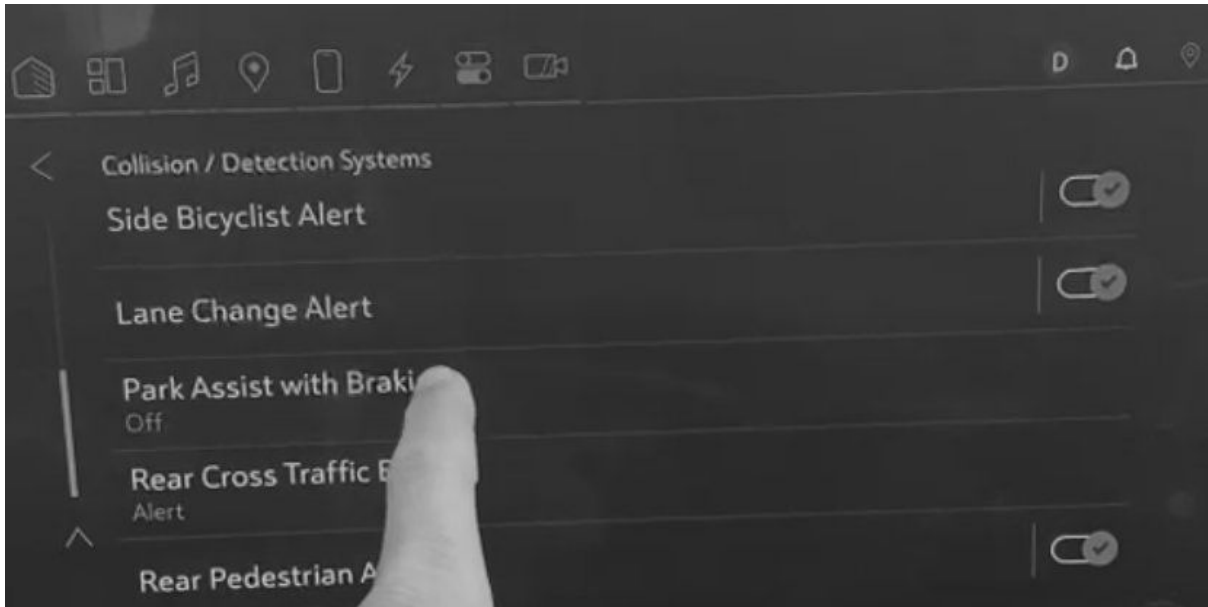


6665122

Go into the settings and enable the Park Assist feature. Please reference the visuals below:



6840473



6840474



6840475



6840476

Service Procedure

Important: Service agents must comply with all International, Federal, State, Provincial, and/or Local laws applicable to the activities it performs under this bulletin, including but not limited to handling, deploying, preparing, classifying, packaging, marking, labeling, and shipping dangerous goods. In the event of a conflict between the procedures set forth in this bulletin and the laws that apply to your dealership, you must follow those applicable laws.

Important: This technical service bulletin (TSB) can only be completed by certified repair facilities who have met all specific training, tool and equipment requirements pertaining to the vehicle Brand and Model serviced. Repairs must be performed by a technician who has successfully completed the required training.

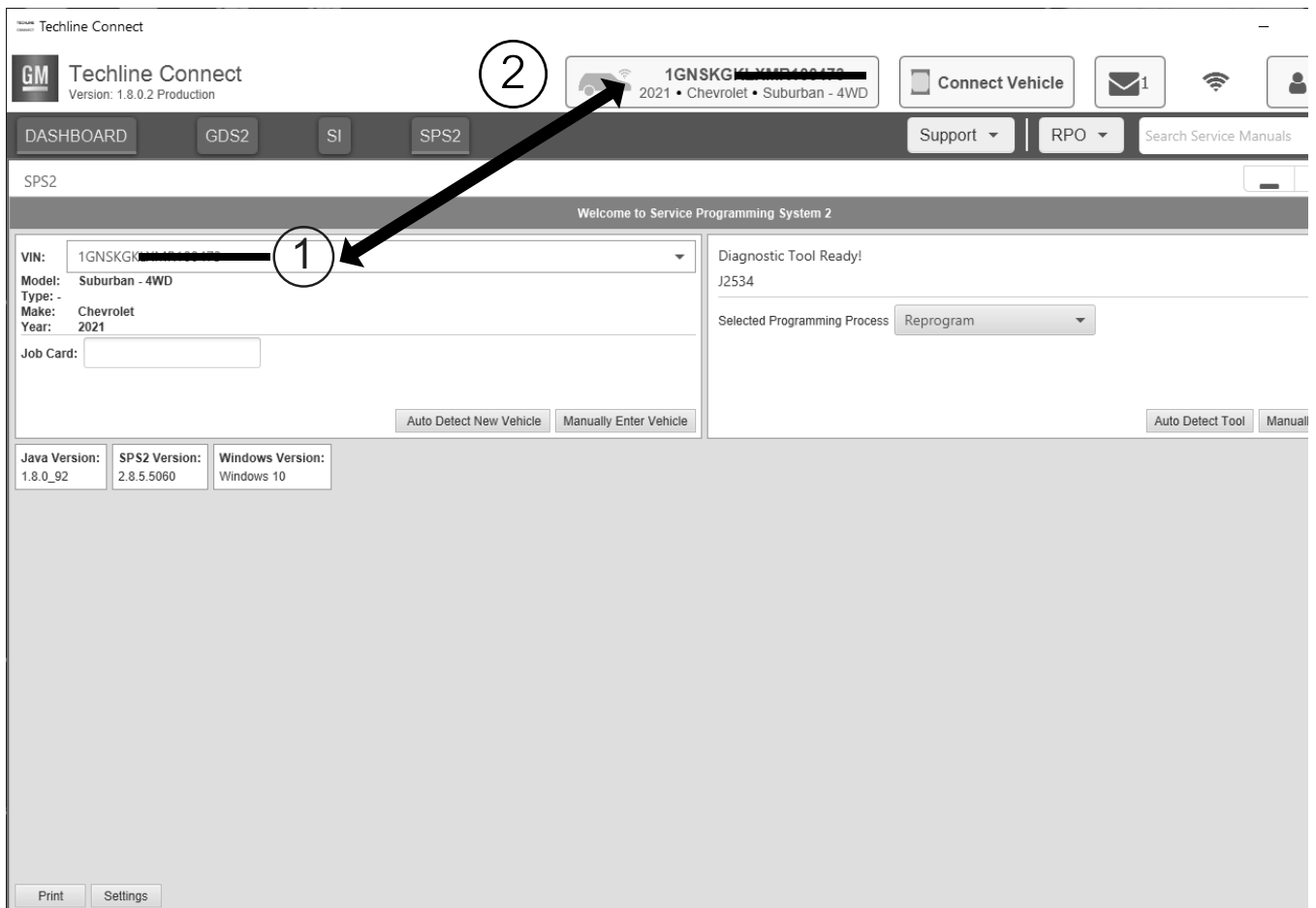
Caution: Before downloading the update files, be sure the computer is connected to the internet through a network cable (hardwired). DO NOT DOWNLOAD or install the files wirelessly. If there is an interruption during programming, programming failure or control module damage may occur.

- Ensure the programming tool is equipped with the latest software and is securely connected to the data link connector. If there is an interruption during programming, programming failure or control module damage may occur.
- Stable battery voltage is critical during programming. Any fluctuation, spiking, over voltage or loss of voltage will interrupt programming. Install a GM Authorized Programming Support Tool to maintain system voltage. Refer to www.gmdesolutions.com for further information. If not available, connect a fully charged 12 V jumper or booster pack disconnected from the AC voltage supply. DO NOT connect a battery charger.
- Follow the on-screen prompts regarding ignition power mode, but ensure that anything that drains excessive power (exterior lights, HVAC blower motor, etc) is off.
- Clear DTCs after programming is complete. Clearing powertrain DTCs will set the Inspection/Maintenance (I/M) system status indicators to NO.

Important: The service technician always needs to verify that the VIN displayed in the TLC left side drop down menu and the top center window match the VIN plate of the vehicle to be programmed prior to using Service Programming System 2 (SPS2) for programming or reprogramming a module.

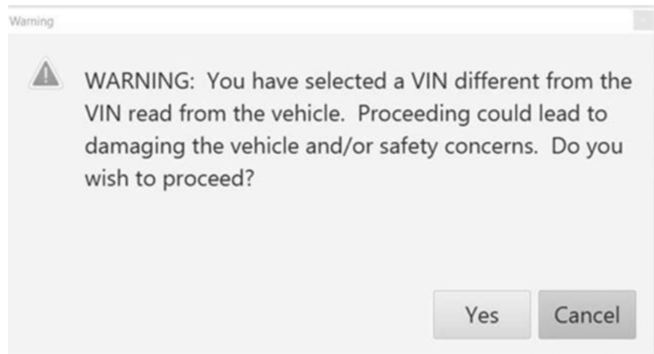
- For the TLC application, service technicians need to always ensure that the power mode (ignition) is “ON” before reading the VIN from the vehicle’s VIN master module and that they do not select a VIN that is already in the TLC application memory from a previous vehicle.
- If the VIN that shows up in the TLC top center window after correctly reading the VIN from the vehicle does not match the VIN plate of the vehicle, manually type in the VIN characters from the vehicle VIN plate into the TLC top center window and use these for programming or reprogramming the subject module with the correct vehicle VIN and software and/or calibrations.
- The Engine Control Module (ECM) is the master module (for VIP vehicles) that TLC reads to determine the VIN of the vehicle. If the VIN read from the vehicle by TLC does not match the VIN plate of the vehicle, the ECM also needs to be reprogrammed with the correct VIN, software and calibrations that match the vehicle’s VIN plate.
- The Body Control Module (BCM) is the master module (for GEM vehicles) that TLC reads to determine the VIN of the vehicle. If the VIN read from the vehicle by TLC does not match the VIN plate of the vehicle, the BCM also needs to be reprogrammed with the correct VIN, software and calibrations that match the vehicle’s VIN plate.

Caution: Be sure the VIN selected in the drop down menu (1) is the same as the vehicle connected (2) before beginning programming.

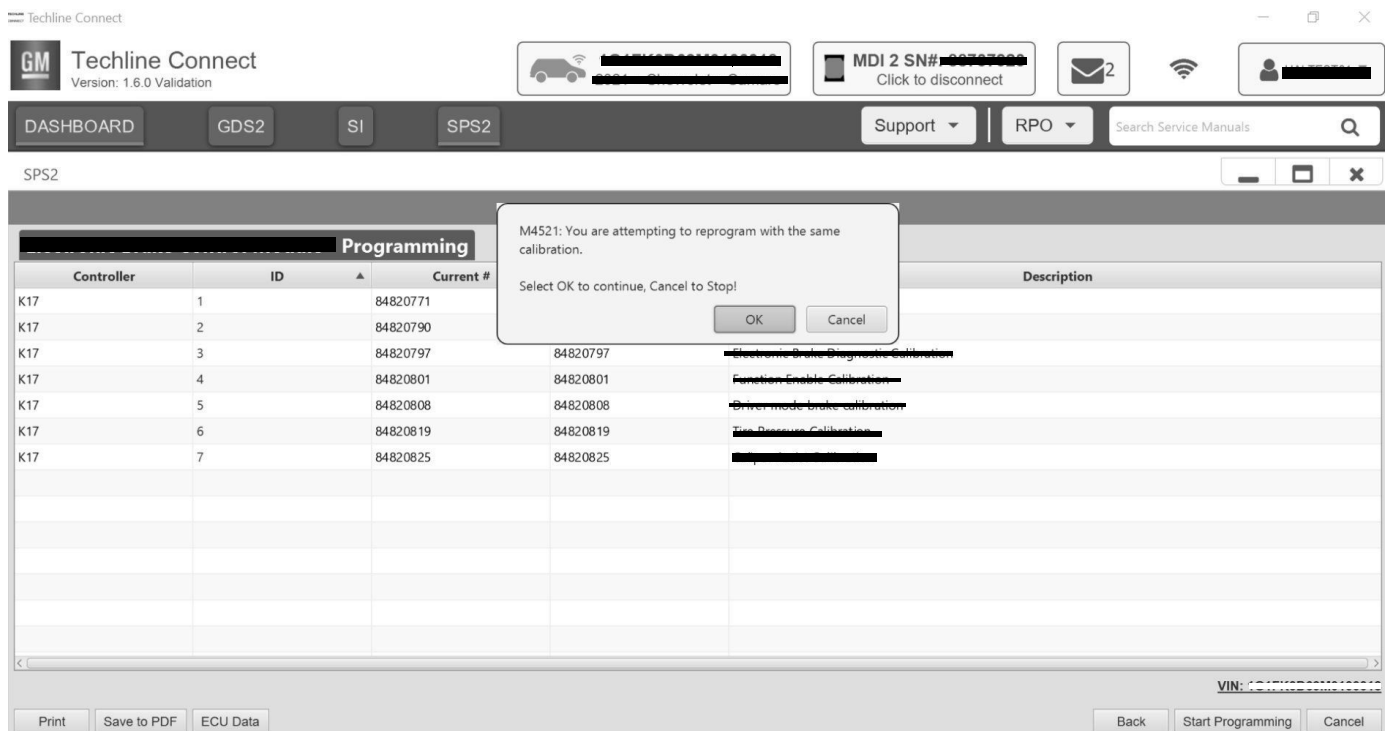


5743643

Important: If the vehicle VIN DOES NOT match, the message below will be shown



5877000

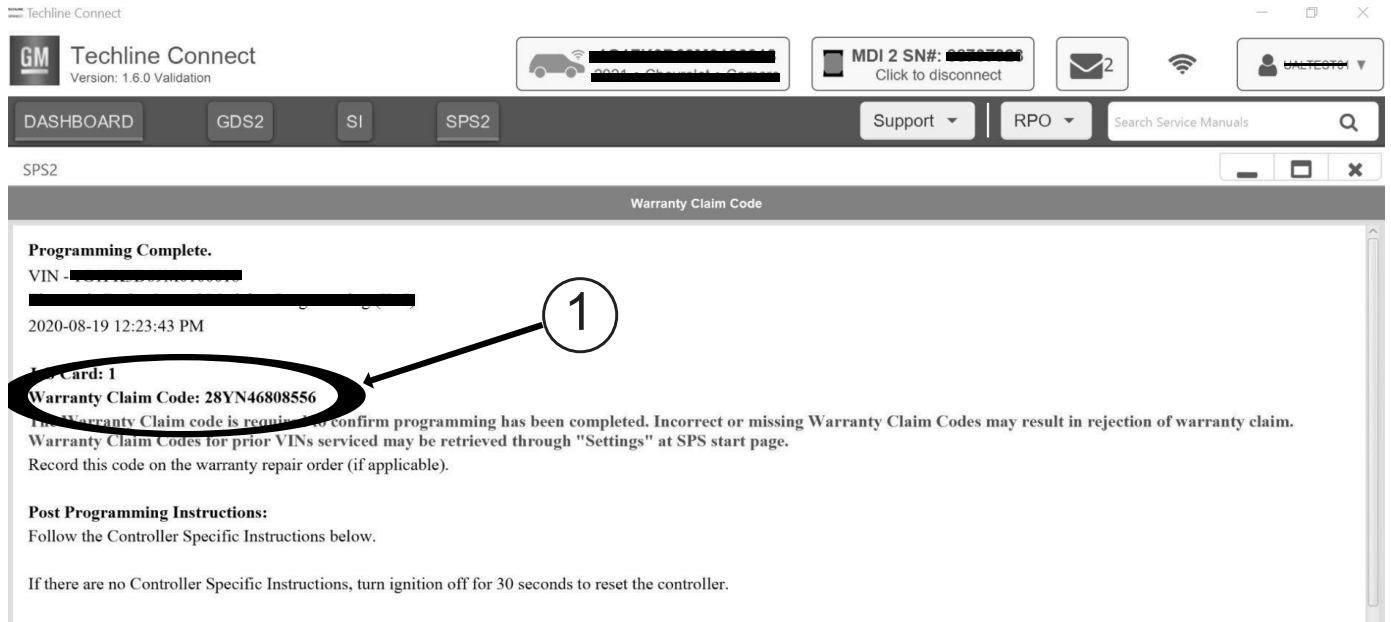


5644477

Important: Techline Connect screens shown above.

Important: If the same calibration/software warning is noted on the TLC Summary screen, select OK and follow screen instructions. After a successful programming event, the WCC is located in the Service Programming System dialogue box of the SPS Summary screen. No further action is required. Refer to the Warranty section of the bulletin.

1. Reprogram the Parking Assist Control Module. Refer to *Parking Assist Control Module Programming and Setup in SI*.



5644478

Note: The screenshot above is an example of module programming and may not be indicative of the specific module that is being programmed. Module selection and VIN information have been blacked out.

Important: To avoid warranty transaction rejections, you **MUST** record the warranty claim code provided on the Warranty Claim Code (WCC) screen shown above on the job card. Refer to callout 1 above for the location of the WCC on the screen.

- Record SPS Warranty Claim Code on job card for warranty transaction submission.

Warranty Information

For vehicles repaired under warranty, use:

Labor Operation	Description	Labor Time
*2810375	Parking Assist Control Module Reprogramming with SPS	Use Published Labor Operation Time

Important: *To avoid warranty transaction rejections, carefully read and follow the instructions below:

Labor Operation	Description	Labor Time
<p>Labour Time [Top]</p> <p>Labour Operation Code:</p> <p>Additional labour op code information: <input type="text"/> SPS Warranty Claim Code: <input type="text"/></p>		
<p>6125814</p>		
<ul style="list-style-type: none">• The Warranty Claim Code must be accurately entered in the “Warranty Claim Code” field of the transaction.• When more than one Warranty Claim Code is generated for a programming event, it is required to document all Warranty Claim Codes in the “Correction” field on the job card. Dealers must also enter one of the codes in the “Warranty Claim Code” field of the transaction, otherwise the transaction will reject. It is best practice to enter the FINAL code provided by SPS2.		

Warranty Claim Code Information Retrieval

VIN	Module	Function	Warranty Claim Code	Job Card
[REDACTED]	K73 - Telematics Communication Interface Control Module	Programming & Service Activation	[REDACTED]	test
[REDACTED]	K9 - Body Control Module	Programming	[REDACTED]	test
[REDACTED]	K5 - Automatic Level Control Module Ignition	Off	[REDACTED]	test driver
[REDACTED]	K56 - Serial Data Gateway Module	Programming	[REDACTED]	test driver

If the Warranty Claim Code was not recorded on the Job Card, the code can be retrieved in the SPS2 system as follows:

1. Open TLC on the computer used to program the vehicle.
2. Select and start SPS2.
3. Select Settings (1).
4. Select the Warranty Claim Code tab (2).

The VIN, Warranty Claim Code and Date/Time will be listed on a roster of recent programming events. If the code is retrievable, dealers should resubmit the transaction making sure to include the code in the SPS Warranty Claim Code field.

Version	3
Modified	Released June 11, 2024 Revised February 13, 2025 - Added the 2024–2025 Chevrolet Blazer EV, Equinox EV, 2025 Chevrolet Equinox, Traverse, and GMC Acadia, Terrain, updated the Correction Section, added four graphics under Service Procedure, and changed the labor operation under Warranty Information. Released February 20, 2025 - Updated Subject, added RPOs to vehicle list, and updated the Condition Section.

