



## STAR ONLINE PUBLICATION



**Case Number:** S2423000034 Rev. A

**Release Date:** February 2025

**Symptom/Vehicle Issue:** Defroster Grille Has Gaps And Or Is Not Sitting Flush.

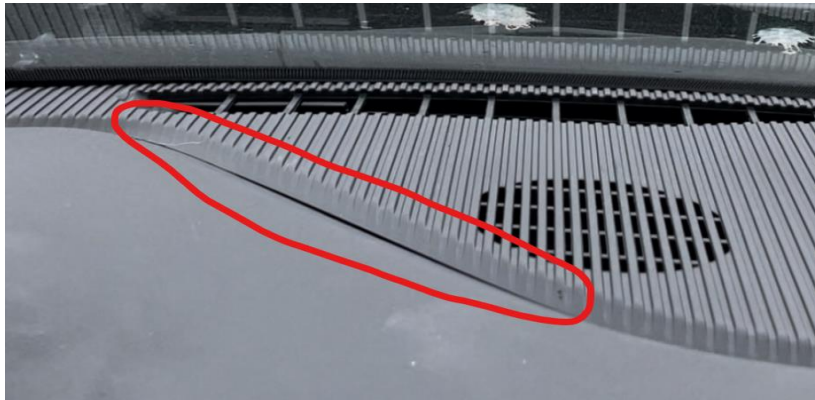


Fig 1.  
Gap At Middle Of Defrost Grille.



Fig 2  
Gap In Corner(s) Of Grille.

This document does not authorize warranty repairs. This communication documents a record of past experiences. STAR Online does not provide any conclusions about what is wrong with the vehicle. Rather, it captures all previous cases known that appear to be similar or related to the vehicle symptom / condition. You are the expert, and you are responsible for deciding on the appropriate course of action.

**Contact STAR Center, or your Technical Assistance Center Via TechConnect, eCONTACT or Service Library entry if no solution is found.**



## STAR ONLINE PUBLICATION



**Discussion:** Gaps in the defroster grille generally fall into 2 groups. Center and edge gaps. If a customer has a concern with the grille fitment, see the below for some tips on how to resolve the gapping condition.

**Tools:** Plastic or fiber trim stick.

- 1.) Inspect the defroster grille for any gaps along the edges.
- 2.) If gaps found on the edges near the a-pillar go to step 3. If gaps are found in the center of the defroster grille go to step 8.
- 3.) Using the trim stick remove the defroster grille from the vehicle.
- 4.) Inspect the clip slots near the suspect location for any excessive flash or glass material. See Fig 4 below.
- 5.) If excessive material is found, remove the excessive material by carefully using a hobby knife.
- 6.) Reinstall defroster grille and validate the clip now fully seats and there is no visible gap.
- 7.) If gaps are present in the center of the defroster grille proceed to step 8.
- 8.) Using the trim stick remove the defroster grille from the vehicle.
- 9.) Inspect the defroster grille for broken or bent clips. Replace the defroster grille if damage is present. If no damage is present proceed to step 10.
- 10.) Reinstall the defroster grille by starting with the center 4-way locator. This clip is in the center left of the defroster grille. (Fig 5)
- 11.) Once the 4-way is installed secure the clips starting at the center and working your way to the ends for both the left and right side.
- 12.) Inspect the defroster grille for any gaps. If there are no gaps present, repair is complete.
- 13.) If the gap is still present, remove the grille, use MOPAR 68620879AA Velcro or a commercially available double-sided tape such as 3M 5952 VHB tape applied in the spot where the grille is lifting or has a gap. Clean both surfaces with isopropyl alcohol to remove any oils or surface contaminants prior to adhesive application. See Fig 3.
- 14.) If gaps are still present replace the defroster grille.

This document does not authorize warranty repairs. This communication documents a record of past experiences. STAR Online does not provide any conclusions about what is wrong with the vehicle. Rather, it captures all previous cases known that appear to be similar or related to the vehicle symptom / condition. You are the expert, and you are responsible for deciding on the appropriate course of action.

**Contact STAR Center, or your Technical Assistance Center Via TechConnect, eCONTACT or Service Library entry if no solution is found.**



## STAR ONLINE PUBLICATION



Fig 3

Velcro Application Top Image. Tape Application Location Bottom Image

This document does not authorize warranty repairs. This communication documents a record of past experiences. STAR Online does not provide any conclusions about what is wrong with the vehicle. Rather, it captures all previous cases known that appear to be similar or related to the vehicle symptom / condition. You are the expert, and you are responsible for deciding on the appropriate course of action.

**Contact STAR Center, or your Technical Assistance Center Via TechConnect, eCONTACT or Service Library entry if no solution is found.**



## STAR ONLINE PUBLICATION

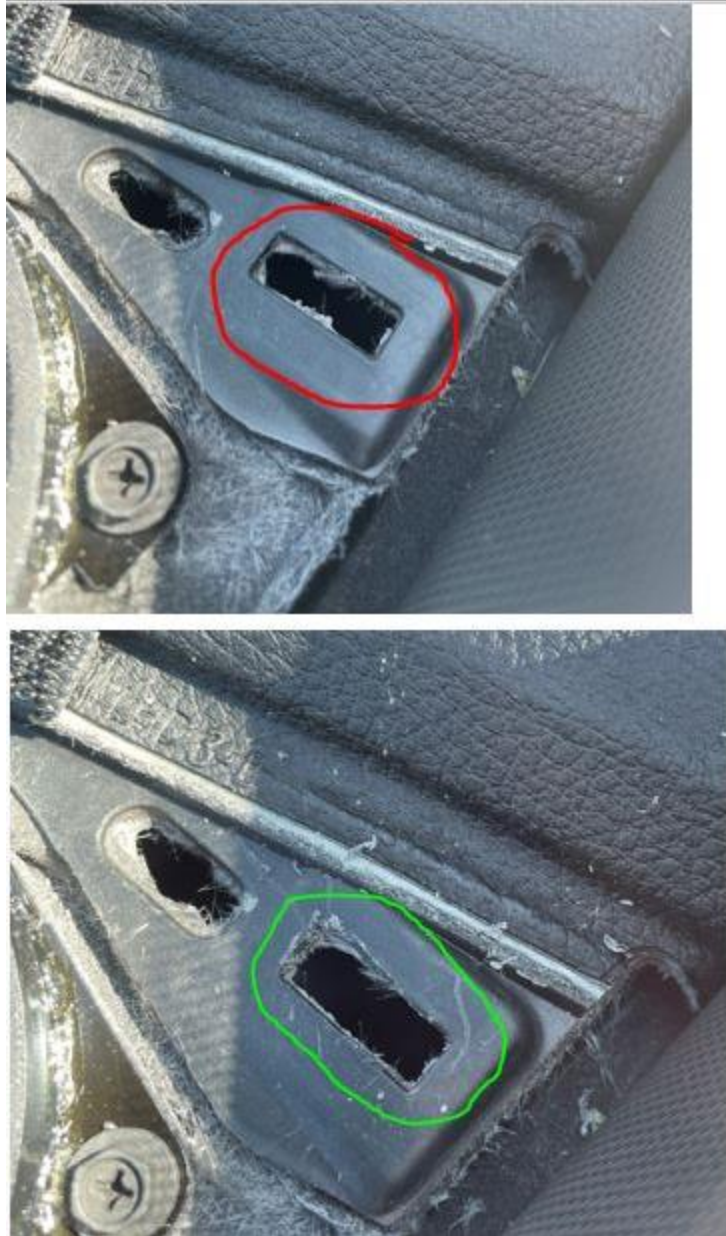


Fig 4.

Upper image hole has flash that will not allow the clips to seat. Lower image has the flash trimmed with a hobby knife to improve clip retention.

This document does not authorize warranty repairs. This communication documents a record of past experiences. STAR Online does not provide any conclusions about what is wrong with the vehicle. Rather, it captures all previous cases known that appear to be similar or related to the vehicle symptom / condition. You are the expert, and you are responsible for deciding on the appropriate course of action.

**Contact STAR Center, or your Technical Assistance Center Via TechConnect, eCONTACT or Service Library entry if no solution is found.**



## STAR ONLINE PUBLICATION

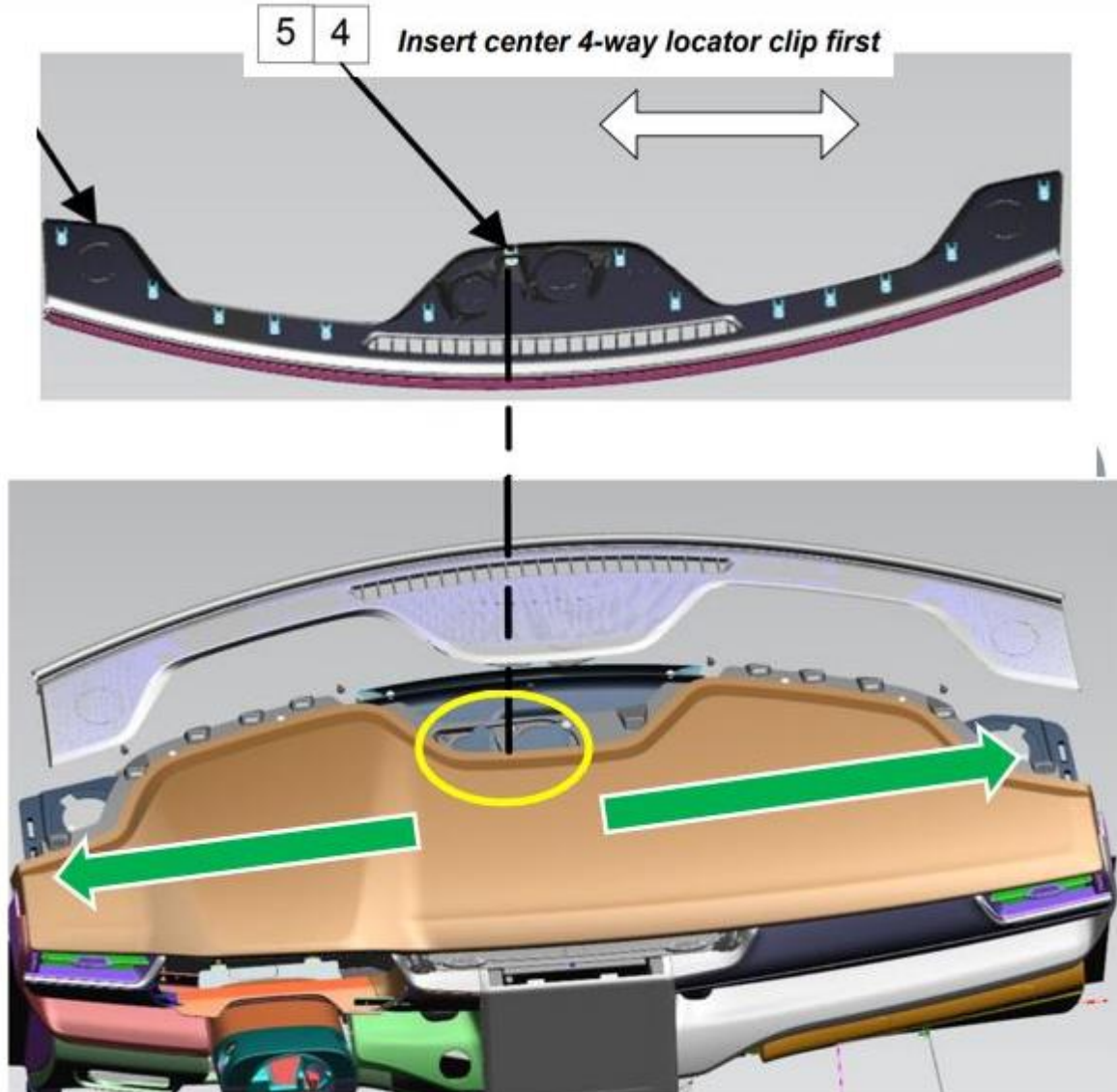


Fig 5.  
4 way locator pin location. Start at the center and work outwards when pressing/snapping the grille into position.

This document does not authorize warranty repairs. This communication documents a record of past experiences. STAR Online does not provide any conclusions about what is wrong with the vehicle. Rather, it captures all previous cases known that appear to be similar or related to the vehicle symptom / condition. You are the expert, and you are responsible for deciding on the appropriate course of action.

**Contact STAR Center, or your Technical Assistance Center Via TechConnect, eCONTACT or Service Library entry if no solution is found.**