



HYUNDAI

Technical Service Bulletin

GROUP CAMPAIGN	NUMBER 25-01-017H
DATE FEBRUARY 2025	MODEL(S) KONA (SX2)

SUBJECT: CENTRAL COMMUNICATION UNIT (CCU) UPDATE FOR WIFI HOTSPOT LOGIC (SERVICE CAMPAIGN 9A7)

This TSB supersedes 24-01-014H to add a note to the GDS Information section regarding an OTA option (page 2), to add a second STUI screenshot (page 5), and to clarify that the ECU update must be performed on **BOTH** Units 1 and 3 (pages 1, 2, 4, 5, & 6).

★ IMPORTANT

Dealers must perform this service campaign on all affected vehicles prior to customer retail delivery and whenever an affected vehicle is in the shop for any maintenance or repair.




Access the “Vehicle Information” screen via WebDCS to identify open campaigns.

Description: On certain 2024MY Kona (SX2) vehicles the Central Communication Unit (CCU) is not providing the WiFi Hotspot setting information, specifically, the Mac address. Follow the procedure in this TSB to update the software of the Central Communication Unit (CCU) in **both** units 1 and 3 to resolve this condition.

Applicable Vehicles (Certain):

- 2024MY Kona (SX2) produced 6/19/2023 – 11/25/2023

SST Information:

Tool Name	Tool Number	Figure	Remarks
VCI 3	G0VHNN06		VCI 3 can be utilized to complete the software updates without additional hardware. If using VCI 2, the ECI Kit will be required to complete the software updates. Ordering information: Website: https://hyundaiessentialtools.com/ Phone: 1-855-763-9199 Email: Hyundaitools@snapon.com Hours: 7 AM – 7 PM CST
VCI 2	G1XDDMN001		
Ethernet Communication Interface (ECI) Kit	G0XDDMN052		

SUBJECT:CENTRAL COMMUNICATION UNIT (CCU) LOGIC UPDATE FOR
WIFI HOTSPOT IMPROVEMENT (SERVICE CAMPAIGN 9A7)**GDS Information:**

Model	System	Event Number	Remarks	Description
SX2	CCU	1066	Required Software Update #1	SX2 ICE CCU LOGIC IMPROVEMENT (Wifi Hotspot) (UNIT1)
		1067	Required Software Update #2	SX2 ICE CCU LOGIC IMPROVEMENT (Wifi Hotspot) (UNIT3)

(*or use a later available event as listed in the GDS **CCU** Update screen if one is available.)

NOTE 1: Both update events 1066 and 1067 **MUST** be performed to qualify for claim submission.

NOTE 2: This software update is subject to an OTA (Over-the-Air) option and may also be completed by customers with active BlueLink subscriptions.

Warranty Information:

Model	Op. Code	Operation	Op. Time	Casual Part	Nature Code	Cause Code
Kona (SX2)	30D165R0	Central Communication Unit (CCU) Software Update	0.5 M/H	91920-BE000	I14	ZZ3

NOTE 1: Submit claim on Claim Entry Screen as “Campaign” type.

NOTE 2: If a part is found in need of replacement while performing this service campaign and the affected part is still under warranty, submit a separate claim using the same repair order. If the affected part is out of warranty, submit a Prior Approval request for goodwill consideration prior to performing the work.

NOTE 3: Op times include VIN, Mileage, and photo capture of the “ECU update complete” screen as outlined in the Digital Documentation Policy. Required photos include “ECU update complete” screens for **both** events 1066 and 1067.

NOTE 4: Claim is subject to debit if either software (1066 or 1067) is **NOT** updated successfully. **Both** software updates are required to qualify and prevent claim rejection.

ROM ID Information:

Model	Unit	Event	System	ECU Part Number	ROM ID	
					Old	New
Kona (SX2)	1	1066	CCU_CCNF	91920-BE000	1.24.59	1.24.67

Model	Unit	Event	System	ECU Part Number	ROM ID	
					Old	New
Kona (SX2)	3	1067	CCU_CGW	91920-BE000	1.24.19	1.24.21

Service Procedure:**DIGITAL DOCUMENTATION**

This TSB includes Repair validation photos. Refer to the latest Warranty Digital Documentation Policy for requirements.

NOTICE

You must initially perform the GDS ECU update in Auto Mode.

- If the ECU update starts but then fails in Auto Mode, perform the update in Manual Mode to recover.

NOTICE

Ensure the vehicle's battery charge is **above 11.0 Volts** and the tablet's battery charge is **above 30%** before performing a software update to avoid the update from failing.

***i* Information**

- Turn off all lamps (do **NOT** leave head lamp switch in auto mode) and all accessories.
- Perform update with the ignition switch in the **ON** position.
- Do **NOT** disconnect any cables connected to the vehicle or scan tool during update.
- Do **NOT** start the engine during update.
- Do **NOT** turn off the ignition switch during update.

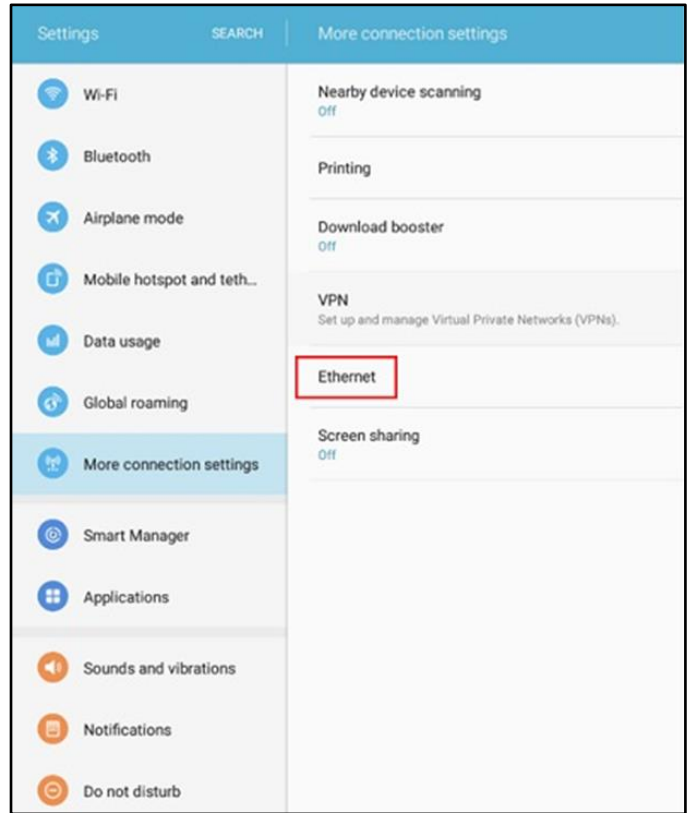
SUBJECT:

**CENTRAL COMMUNICATION UNIT (CCU) LOGIC UPDATE FOR
WIFI HOTSPOT IMPROVEMENT (SERVICE CAMPAIGN 9A7)**

- 1. Confirm setup of Ethernet connection settings to establish proper communication protocol.

i Information

Refer to **TSB # 23-GI-006H**, “**Configure Ethernet Connection on GDS Tablet to Enable Over-The-Air (OTA) Software Update**”.



- 2. Perform the **first** of 2 required ECU updates in Auto Mode (**UNIT 1**).

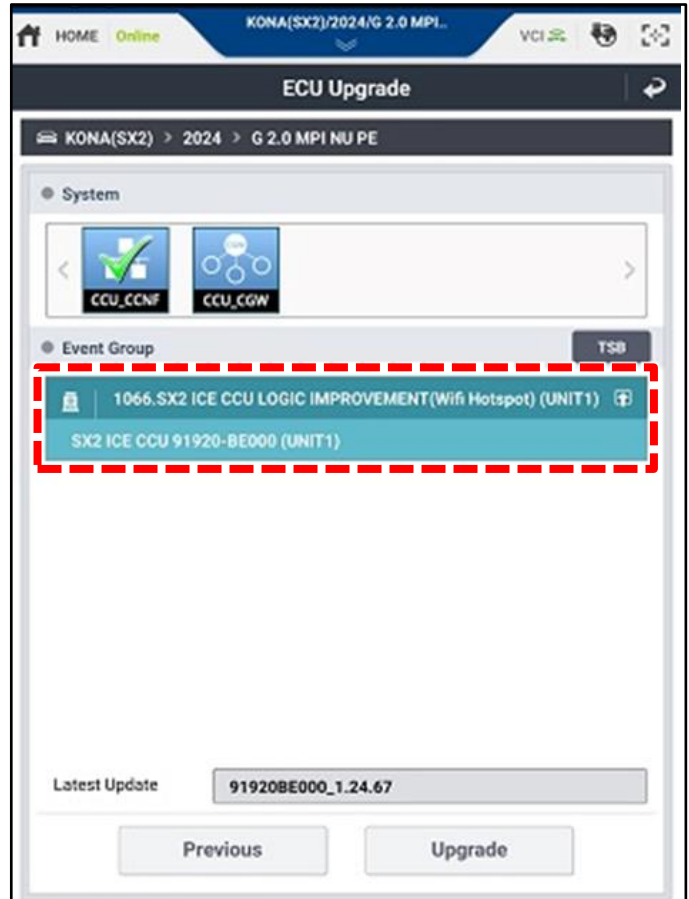
NOTICE

Both **Unit 1** and **Unit 3** **must** be updated.

Use the **ID Check** to verify the ROM ID before updating the software.

i Information

Refer to **TSB # 24-GI-012H**, “**ECU Update Procedure for Tablet-Based GDS-Smart**”, for additional information.



SUBJECT:

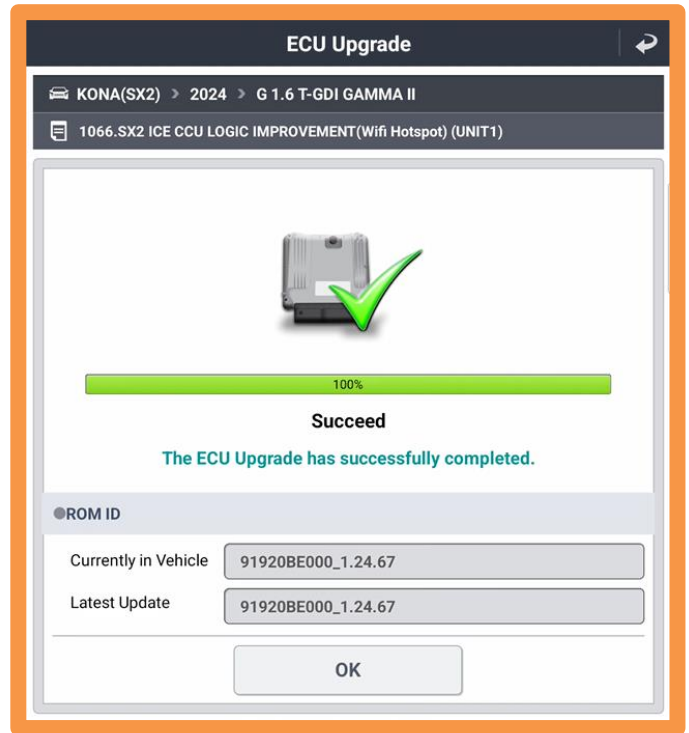
**CENTRAL COMMUNICATION UNIT (CCU) LOGIC UPDATE FOR
WIFI HOTSPOT IMPROVEMENT (SERVICE CAMPAIGN 9A7)**

3.

**DIGITAL
DOCUMENTATION**



Take a screenshot of the ECU update complete screen using your tablet and upload to STUI (UNIT 1, 1 of 2 required).



4. Perform the **second** of 2 required ECU updates in Auto Mode (**UNIT 3**).

NOTICE

Both **Unit 1** and **Unit 3** **must** be updated.

Use the **ID Check** to verify the ROM ID before updating the software.



SUBJECT:

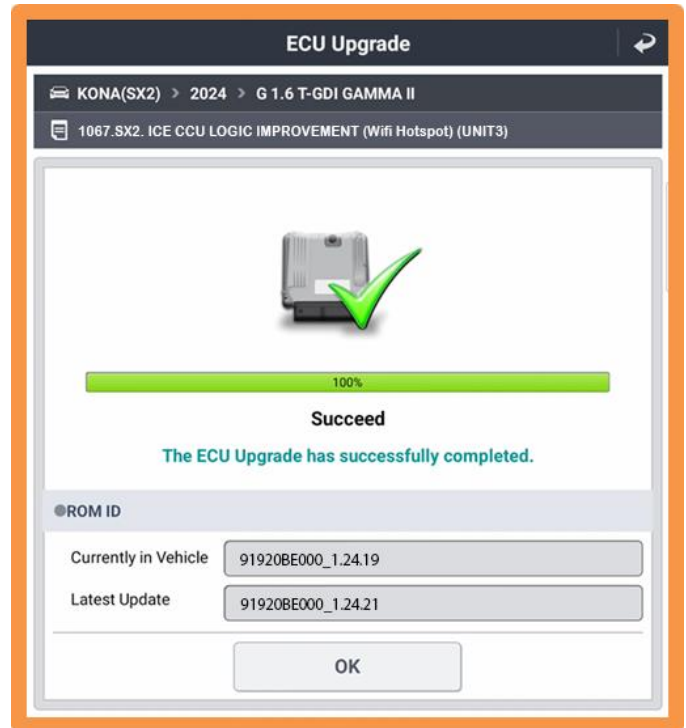
**CENTRAL COMMUNICATION UNIT (CCU) LOGIC UPDATE FOR
WIFI HOTSPOT IMPROVEMENT (SERVICE CAMPAIGN 9A7)**

5.

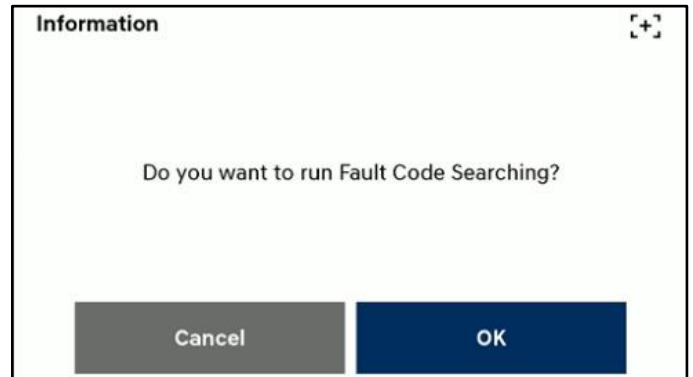
**DIGITAL
DOCUMENTATION**



Take a screenshot of the ECU update complete screen using your tablet and upload to STUI (UNIT 3, 2 of 2 required).



6. Perform an **All Systems Fault Code** search and erase DTC history that had incidentally occurred from the ECU update.



7. Start the ignition to confirm proper operation of the vehicle.

NOTICE

If either ECU update fails in Auto Mode, perform the update in Manual Mode using the passwords below.

Manual Mode Password Information:

Event Number	ECM Menu	Password
1066	SX2 ICE CCU 91920-BE000 (UNIT1)	5967
1067	SX2 ICE CCU 91920-BE000 (UNIT3)	2119