

ired
D: 102939

page
get
ions
: / Deny

ne
quest

Close

Communication

Publish Dates

- The Start Date is when the communication will be visible to dealers in DCMail.
- The End Date is when the communication will no longer be visible to dealers in DCMail.
- NOTE: End Dates are limited to one (1) year from the Start Date. If you wish to lengthen the End Date, you may extend it at any time after publish.

Start Date 2/4/2025 7:00 AM

End Date 2/25/2025 11:55 PM

Note: All times are EST

Title

What will display in DCMail for dealers to click on.
TIP: Keep titles short, but specific and eye catching.

LATCH - FRONT & REAR DOOR

Flagged for Reporting Agency

NO

Communication Summary

To increase search capability and visibility of your communication, please provide a brief summary or your message (140 characters max). This will display when dealers hover over your communication.

LATCH - FRONT & REAR DOOR

Message

The body of your communication. Use the formatting toolbar above to format text, insert tables, pictures, and/or hyperlinks.

Click Edit > Attach File to attach documents

IMPORTANT NOTES:

- Pictures must have unique file names. If you receive an error message when uploading a picture, it means the file name has already been chosen. Simply change your file name and try again.
- Communications cannot exceed more than 12MB; this includes images and text, and all attachments.

You have been identified as either having stock on hand or in transit to your dealership.

Please check and return suspect stock of part numbers: **68526613AB**, **68366543AC**, **68366540AC** and **68366542AC**. Please refer to QIR attachment.

Please return all parts back to your facing depot using **Return Code 02**, before 25th February 2025.

Replacement parts **68526613AC**, **68366543AD**, **68366540AD** and **68366542AD** are available, can be ordered.

Return any open orders in process too. Direct questions regarding returns via email to mopardmail@stellantis.com.

Attachments

[QIR_English .pdf](#)

File Attachment Information

File Size (MB)	File Name
0.11	QIR_English .pdf



Quality Inspection Request

04-FEB-2025

LATCH – FRONT & REAR DOOR

Suspect Part Identification

Part numbers:

68526613AB, 68366543AC, 68366540AC
and 68366542AC

Built date code location:

Built Date code shown

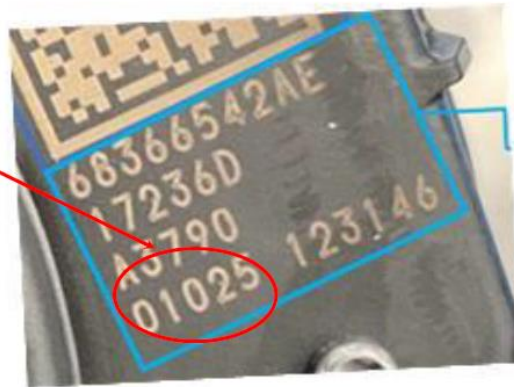
01025: DDDYY

10th day of 2025

10th January 2025

Part in picture shown is not suspect.

Part in picture below is not suspect.



Suspect parts: All parts built between Julian date code **21424** To **36624** (1st August 2024 to 31st December 2024) are suspect parts.