

Technical Service Bulletin

Mazda North American Operations
Irvine, CA 92618-2922

**Subject:**

i-ACTIVSENSE/ALH WARNING LIGHTS ON WITH DTC U3000:04
[FORWARD SENSING CAMERA (FSC)] STORED

Bulletin No.: 15-001/25

Last Issued : 02/07/2025

BULLETIN NOTES

This bulletin supersedes the previously issued bulletin(s) listed below. The changes are noted in Red.

Previous TSBs:	Date(s) Issued:
15-003/22	01/27/22

APPLICABLE MODEL(S)/VINS

2019-2023 Mazda3 (Japan built) with VINS lower than JM1BP*****623995 (produced before May 24, 2023)

2019-2023 Mazda3 (Mexico built) with VINS lower than 3MZBP*****385904 (produced before September 12, 2023)

2020-2023 CX-30 with VINS lower than 3MVDM*****589484 (produced before September 2, 2023)

2022-2024 MX-30 with VINS lower than JM1DR*****200940 (produced before April 20, 2024)

DESCRIPTION

Some vehicle may experience the i-ACTIVSENSE/ALH warning lights on and a system error messages may be found in the center display as well.

- DTC U3000:04 (FSC) is stored in memory
- DTC U3000:04 (FSC) - Forward sensing camera (FSC) internal malfunction

This may be caused by a hardware failure in an internal device of the FSC that results in the malfunction detection. To eliminate this concern, the production process of the FSC has been modified.

Customers having this concern should have their vehicle repaired using the following repair procedure.

REPAIR PROCEDURE

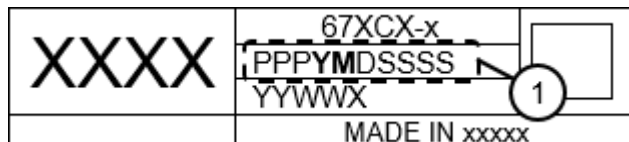
1. Verify the customer concern.
2. Replace the FSC with a modified one according to the instructions on MGSS.
 - Mazda3 (FORWARD SENSING CAMERA (FSC) REMOVAL/INSTALLATION)
 - CX-30 (FORWARD SENSING CAMERA (FSC) REMOVAL/INSTALLATION)
 - MX-30 (FORWARD SENSING CAMERA (FSC) REMOVAL/INSTALLATION)
3. Verify the repair.

Page 1 of 3

CONSUMER NOTICE: The information and instructions in this bulletin are intended for use by skilled technicians. Mazda technicians utilize the proper tools/ equipment and take training to correctly and safely maintain Mazda vehicles. These instructions should not be performed by "do-it-yourselfers." Customers should not assume this bulletin applies to their vehicle or that their vehicle will develop the described concern. To determine if the information applies, customers should contact their nearest authorized Mazda dealership. Mazda North American Operations reserves the right to alter the specifications and contents of this bulletin without obligation or advance notice. All rights reserved. No part of this bulletin may be reproduced in any form or by any means, electronic or mechanical---including photocopying and recording and the use of any kind of information storage and retrieval system ---without permission in writing.

PARTS INFORMATION

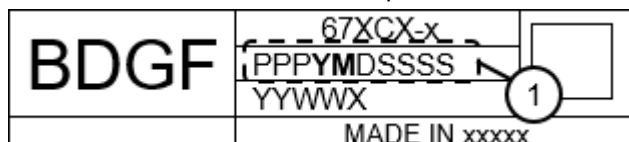
[Mazda3 (Japan built) and MX-30] The part number has not been changed for the modification. If the serial number (1) on the label attached to the service part has a date of April 2021 or later, it is a modified part.



4th letter of the serial number (Y)
L: 2021, M: 2022
5th letter of the serial number (M)
4: April, 5: May,...A: October,...

If the obtained part has a part number with a later suffix (such as "BDGF-67-XCXP or later", "DFR5-67-XCXK or later", or "BEST-67-XCXD or later"), it is a modified part. There is no need to check the serial number.

[Mazda3 (Mexico built) and CX-30] The part number has not been changed for the modification. If the serial number (1) on the label attached to the service part has a date of February 2021 or later, it is a modified part.



4th letter of the serial number (Y)
L: 2021, M: 2022
5th letter of the serial number (M)
2: February, 3: March,... A: October,...

[All vehicles]

Use VIN to lookup correct part number in GEPC.

Parts Number	Description	Qty.	Notes
BDGF-67-XCXN	Camera, Forward Sensing	1	Mazda3 (Mexico built) and CX-30
DFR5-67-XCXJ	Camera, Forward Sensing	1	Mazda3 (Japan built)
BEST-67-XCXC	Camera, Forward Sensing	1	MX-30

CONSUMER NOTICE: The information and instructions in this bulletin are intended for use by skilled technicians. Mazda technicians utilize the proper tools/ equipment and take training to correctly and safely maintain Mazda vehicles. These instructions should not be performed by "do-it-yourselfers." Customers should not assume this bulletin applies to their vehicle or that their vehicle will develop the described concern. To determine if the information applies, customers should contact their nearest authorized Mazda dealership. Mazda North American Operations reserves the right to alter the specifications and contents of this bulletin without obligation or advance notice. All rights reserved. No part of this bulletin may be reproduced in any form or by any means, electronic or mechanical---including photocopying and recording and the use of any kind of information storage and retrieval system ---without permission in writing.

WARRANTY INFORMATION**NOTE:**

- This warranty information applies only to verified customer complaints on vehicles eligible for warranty repair.
- This repair will be covered under Mazda's New Vehicle Limited Warranty term.
- Additional diagnostic time cannot be claimed for this repair.

Warranty Type	A
Symptom Code	62
Damage Code	9W
Part Number Main Cause	****-67-XCX*
Quantity	1
Operation Number / Labor Hours:	XXT88ARX / 0.4 Hrs. (Mazda3) XXT88XRX / 0.5 Hrs. (CX-30 and MX-30)

CONSUMER NOTICE: The information and instructions in this bulletin are intended for use by skilled technicians. Mazda technicians utilize the proper tools/ equipment and take training to correctly and safely maintain Mazda vehicles. These instructions should not be performed by "do-it-yourselfers." Customers should not assume this bulletin applies to their vehicle or that their vehicle will develop the described concern. To determine if the information applies, customers should contact their nearest authorized Mazda dealership. Mazda North American Operations reserves the right to alter the specifications and contents of this bulletin without obligation or advance notice. All rights reserved. No part of this bulletin may be reproduced in any form or by any means, electronic or mechanical---including photocopying and recording and the use of any kind of information storage and retrieval system ---without permission in writing.