

DTNA Solutions > Service Solutions > Thomas Built Bus
> SS 292 TBB EB2 MCC Controller Update, Intellipark ...

SS 292 TBB EB2 MCC Controller Update, Intellipark Keep-Awake

Applicable Vehicles

C2

Symptoms

Battery Draw

Issue

This update aims to resolve a concern where the Bendix Intellipark DECU will stay awake indefinitely in key off scenarios

- This will eliminate a very low constant power draw
- This will reduce customer nuisance complaints that arise from seeing the Intellipark DECU lamps remain on at all times

Solution

Revise SS292 instructions 2/5/25

Download the latest driver package from ftdichip.com

- The appropriate drivers for a Windows PC can be obtained from

<https://ftdichip.com/drivers/vcp-drivers/>->Windows (Desktop)-> setup executable as pictured below (or found in the update package on DTNA Portal)


Labels :

Saf-T-Liner

Add tags

Attachments



 2 Kudos

Comment



DAIMLER TRUCK

EB2 MCC Controller Update

Intellipark Keep-Awake Solution



General

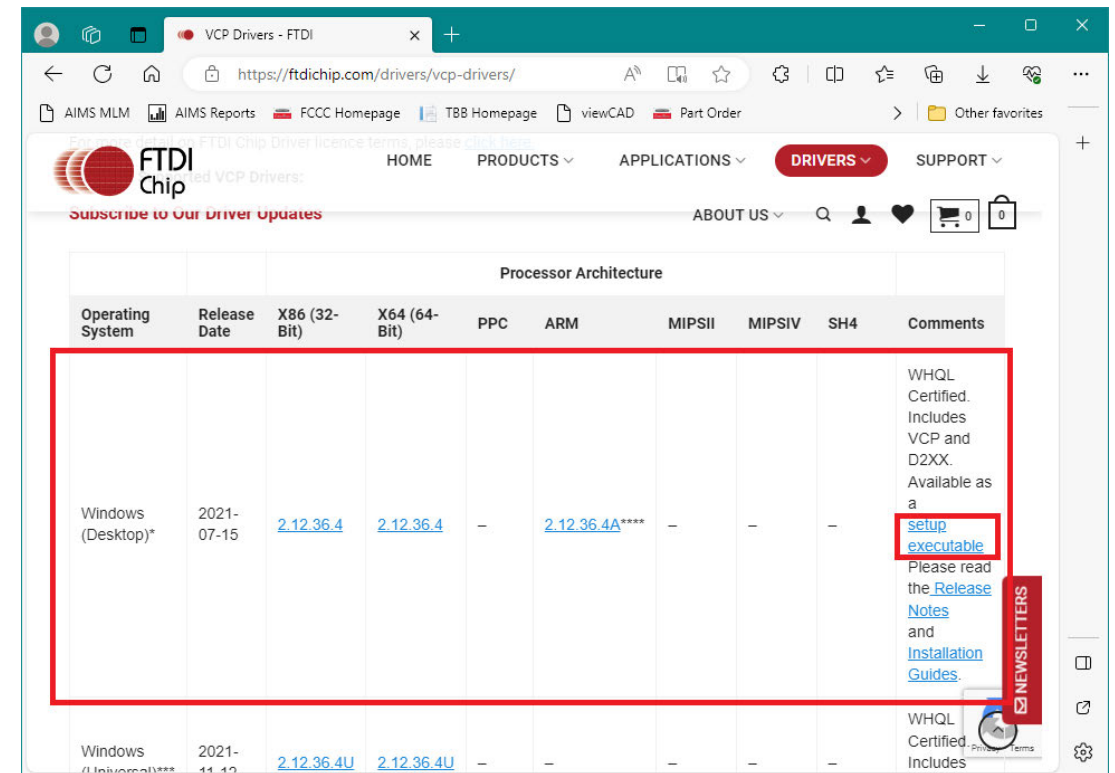
- This update aims to resolve a concern where the Bendix Intellipark DECU will stay awake indefinitely in key off scenarios
- This will eliminate a very low constant power draw
- This will reduce customer nuisance complaints that arise from seeing the Intellipark DECU lamps remain on at all times

Tools Required

- ECC Downloader Software (ECCDownloaderSetup.msi)
- BCC RS485 to USB Adapter (BCC P/N 35-0735)
- FTDI VCP Drivers
- Software Update Hex File (T35-1864 ThomasBus V107 24.06.06.hex)

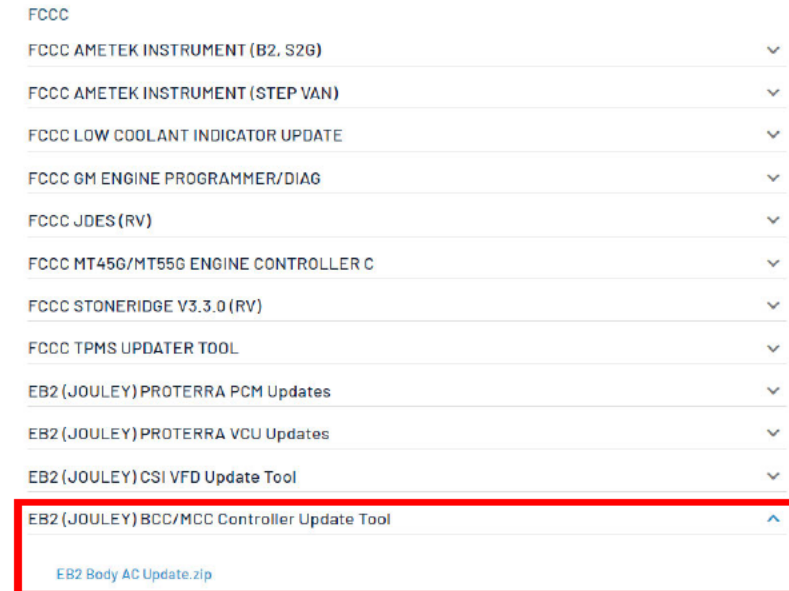
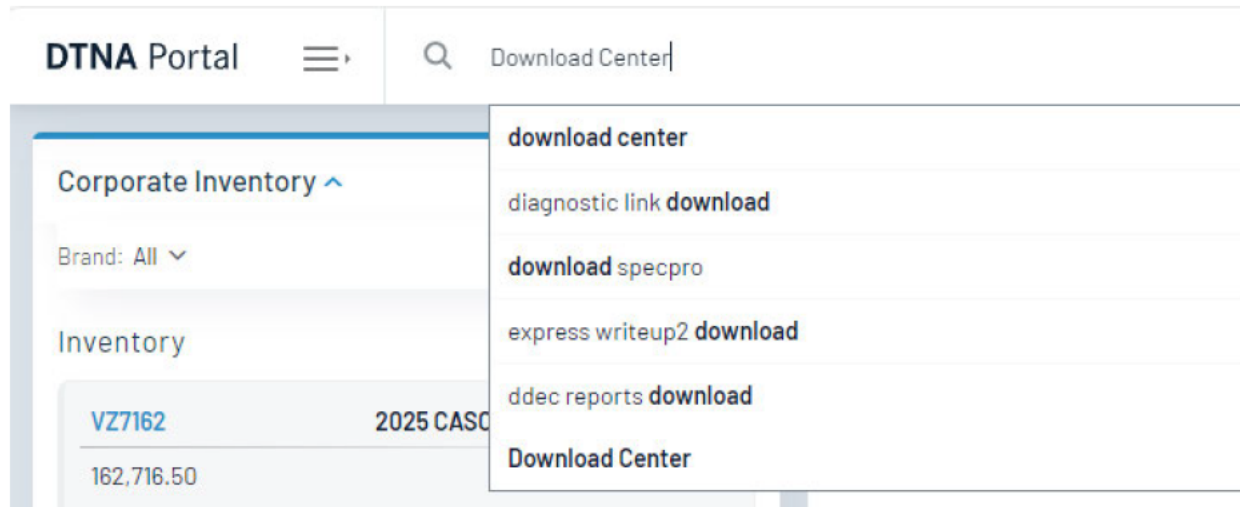
FTDI Driver Installation

- Download the latest driver package from ftdichip.com
- The appropriate drivers for a Windows PC can be obtained from <https://ftdichip.com/drivers/vcp-drivers/>->Windows (Desktop)-> setup executable as pictured below (or found in the update package on DTNA Portal)
- Run the downloaded executable to install the VCP driver package



MCC ECC Downloader Installation

- Search for the Download Center on the DTNA Portal
- Locate the EB2 Body A/C Update Package under the FCCC section and download the package
- Install the ECC Downloader Software (ECCDownloaderSetup.msi)

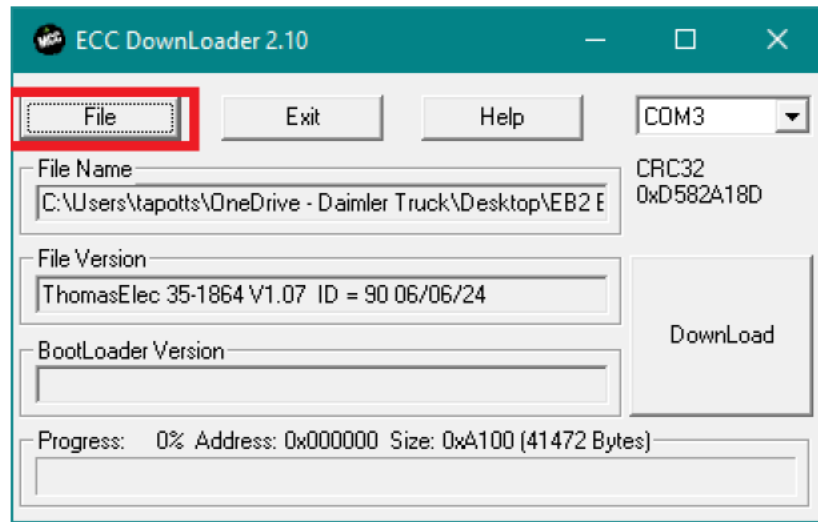


Updating EB2 Body AC Controller

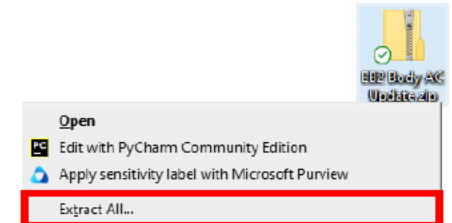
- Connect the RS485 to USB adapter (BCC P/N 35-0735) to the DB9 port located on top of the body AC control board located on the driver side of the vehicle directly behind the low voltage battery access door
- Connect the USB cable included with the RS485 to USB adapter to the adapter via the USB-B port on the adapter
- Connect the USB-A end of the USB cable to a Windows PC with ECC Downloader and FTDI VCP drivers installed
- Run the ECC Downloader software

Updating EB2 Body AC Controller Continued...

- Click File and select the ECU software hex provided in the EB2 Body AC update package

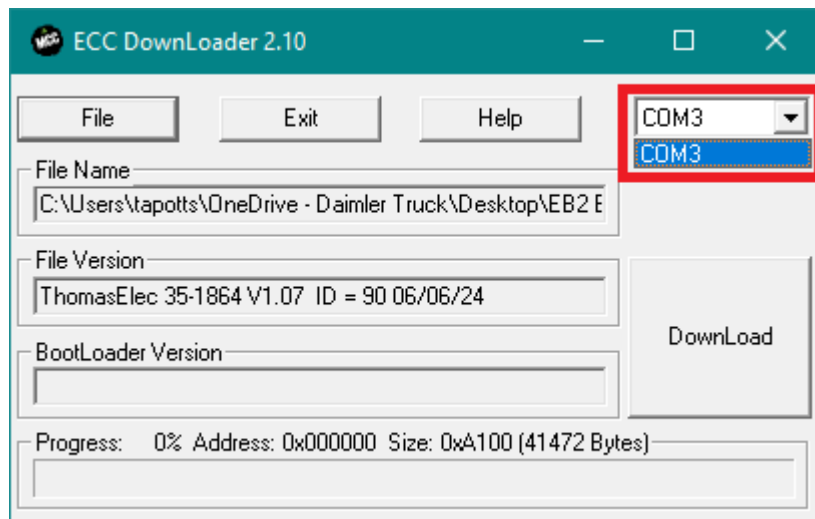


Note: The software hex file provided in the EB2 Body AC update package **MUST** be **extracted** from the compressed zip archive to be visible in the file selection dialog!



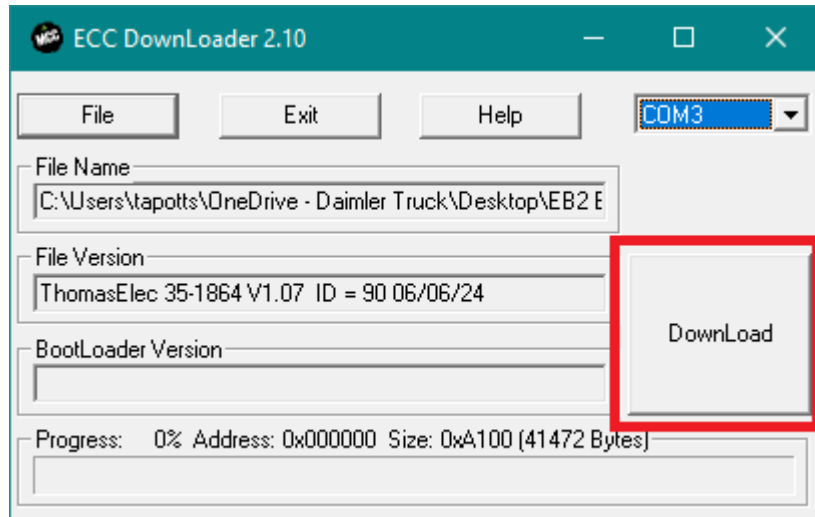
Updating EB2 Body AC Controller Continued...

- Select the appropriate COM port from the dropdown box
- NOTE: The appropriate COM port may be different for each user depending on Windows PC Configuration
- Typically the correct COM port will only appear in the dropdown box when the RS485 adapter is connected to the PC



Updating EB2 Body AC Controller Continued...

- Select the download button to begin flashing the ECU
- Wait until the flashing process is finished and the progress bar is at 100%



Validation

- When the update is complete the Intellipark DECU should now properly power down when the key is turned off
- Turn off the vehicle and allow the DECU approximately 5 minutes to power down
- Once the Intellipark DECU powers down the LED indicators will turn off
- Update complete